

caracole



TUXEDO CHAIR

uph-423-033-b

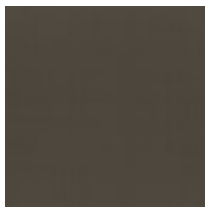
COLLECTION: CARACOLE UPHOLSTERY

DIMENSIONS: 39W x 36.5D x 29H

Exuding warmth and comfort with an air of confidence, this classic shelter arm chair features clean lines and crisp tailoring in a fresh neutral colorway. Inspired by modern takes on the iconic tuxedo, its enveloping silhouette is wrapped in a textured woven, complemented by a faux mohair opal fabric on the inside arms, seat and back. Metal legs in brushed deep bronze add warmth and a dashing finish, complemented by a tonal chenille toss pillow

CONSTRUCTION: 8-Way hand tied seat. | Plush poly foam cushion. | Feather down pillows.

FINISH:

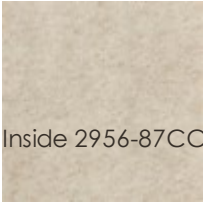


Brushed_Deep_Bronze

FABRIC:



Body Fabric: Outside
2966-74CC-P
Performance



Inside 2956-87CC



Pillow Fabric: 1-22''' x
20''' pillow fabric
2940-34CC