



*ASSEMBLY INSTRUCTIONS*  
*COASTER FINE FURNITURE*



*Fine Furniture for every stage of life*

REVISION 0: 06/30/2021

REVISION 1: 07/28/2022

PAGE 1 OF 4

**115183**

DINING CHAIR

COASTERFURNITURE.COM

# ITEM:115183



## ASSEMBLY INSTRUCTIONS

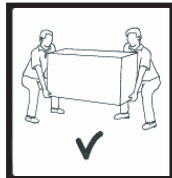
### ASSEMBLY TIPS:

1. Remove hardware from box and sort by size.
2. Please check to see that all hardware and parts are present prior to start of assembly.
3. Please follow attached instructions in the same sequence as numbered to assure fast & easy assembly.



### WARNING!

1. Don't attempt to repair or modify parts that are broken or defective. Please contact the store immediately.
2. This product is for home use only and not intended for commercial establishments.



ASSEMBLY TIME

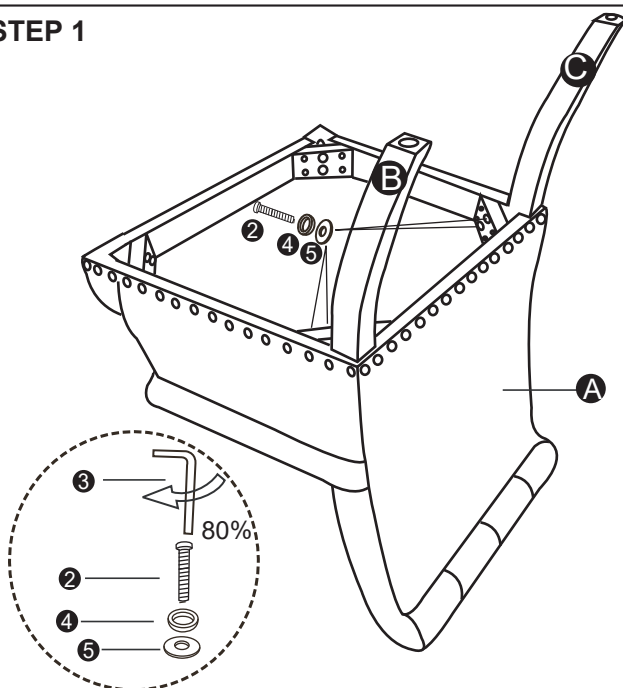
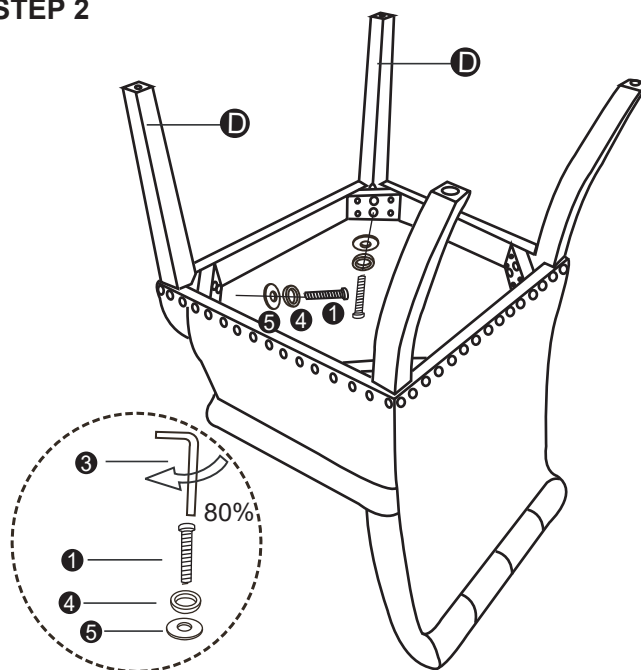
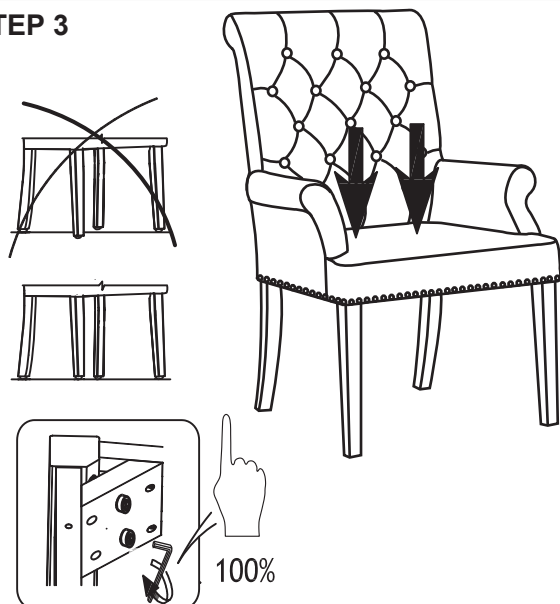
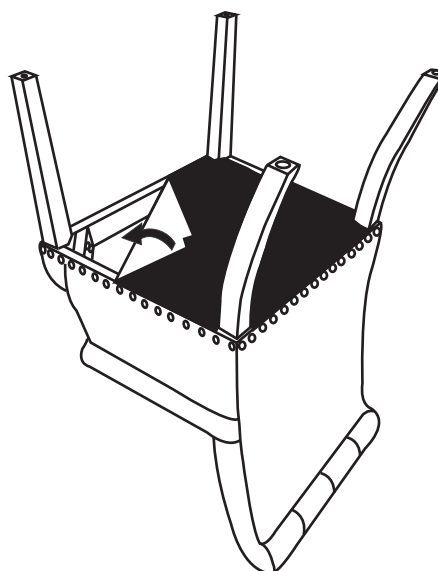
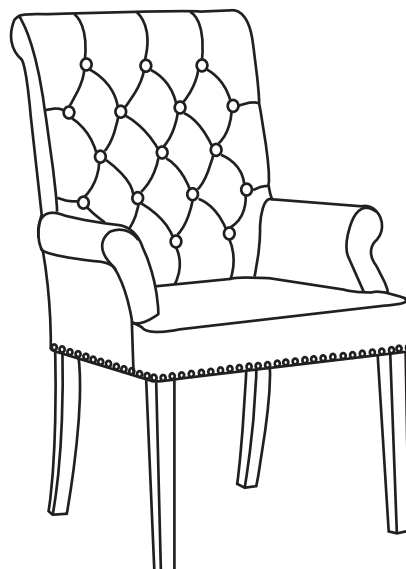
10 MINUTES

## PARTS IDENTIFICATION

|   |  |                |      |
|---|--|----------------|------|
| A |  | BACK           | 1PC  |
| B |  | BACK RIGHT LEG | 1PC  |
| C |  | BACK LEFT LEG  | 1PC  |
| D |  | FRONT LEGS     | 2PCS |

## HARDWARE IDENTIFICATION

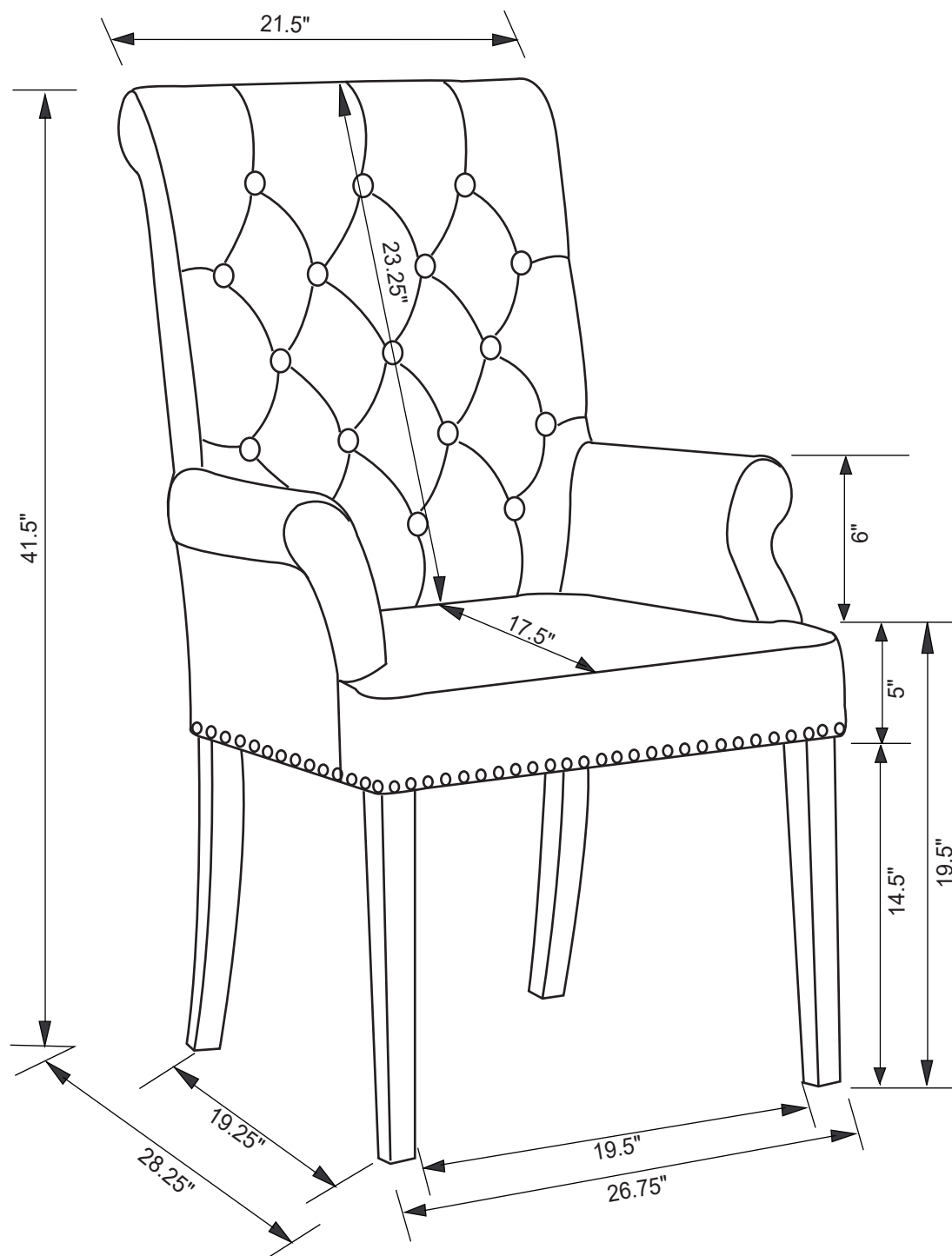
|   |  |                         |      |
|---|--|-------------------------|------|
| 1 |  | LARGE BOLT<br>(M8×65mm) | 4PCS |
| 2 |  | SMALL BOLT<br>(M8×60mm) | 4PCS |
| 3 |  | ALLEN KEY<br>(M8)       | 1PC  |
| 4 |  | LOCK WASHER<br>(Φ8)     | 8PCS |
| 5 |  | FLAT WASHER<br>(Φ8)     | 8PCS |

**STEP 1****STEP 2****STEP 3****STEP 4****STEP 5**

ITEM: **115183**



## ASSEMBLY INSTRUCTIONS



**Note :** Dimension tolerance  $\pm 5\%$