

Install Guide

for 650PTM, 800PTM, 1000PT/M,
1200PT-1/M, 1200PT-2/M & 1500PTM

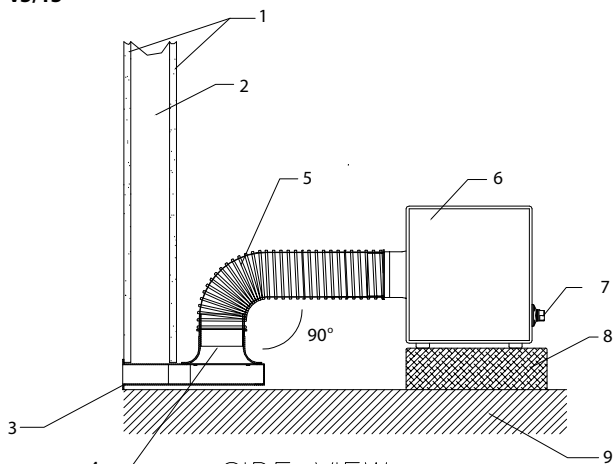
v3/13

Construction

- 1: Dry Wall
- 2: Vertical Stud
- 3: Adaptor
- 4: Flang Adaptor
- 5: Flexible Tuned Port
- 6: Low Frequency Device
- 7: Input Terminal
- 8: Pedestal
- 9: Ground/Floor

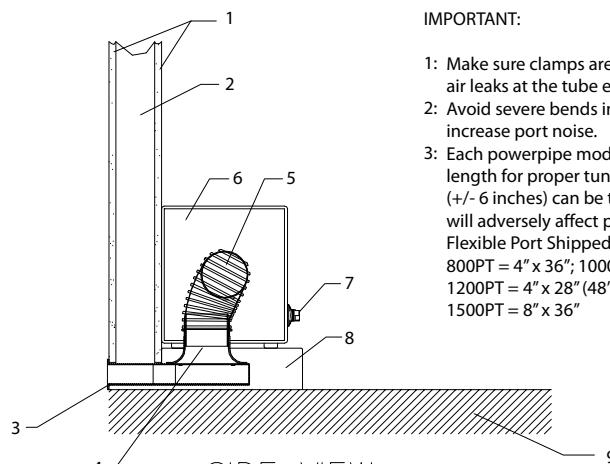
Material Specs

- Die-Cast or T6 Aluminum
- High Impact Polystyrene
- Composite Polyurethane/Vinyl
- Medium Density Fiber



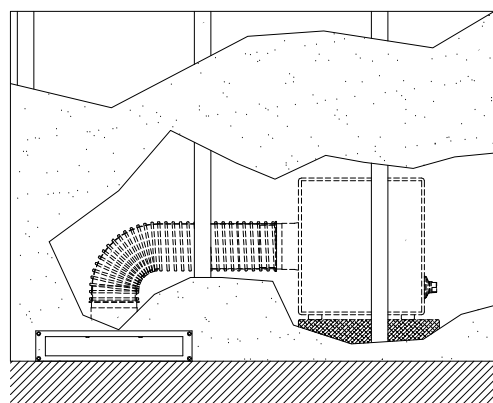
SIDE VIEW

AWAY FROM
THE WALL



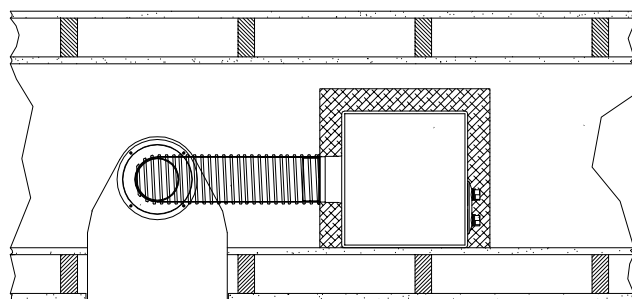
SIDE VIEW

UP AGAINST
THE WALL



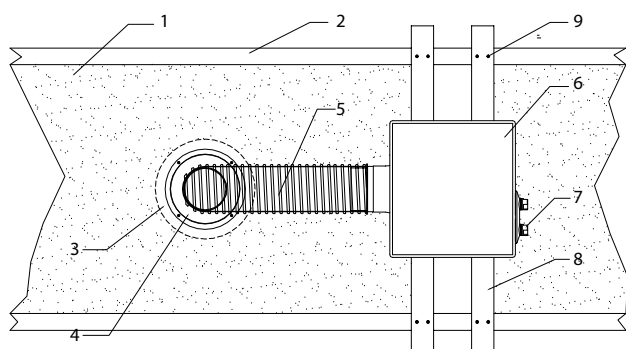
FRONT VIEW

LOOKING INTO
THE WALL



TOP VIEW

LOOKING DOWN
TO THE WALL



CEILING MOUNT CONSTRUCTION

LOOKING DOWN
FROM CEILING

In-ceiling Construction

- 1: Dry Wall
- 2: Rafter Stud
- 3: Trim Ring/Grille
- 4: Flang Adaptor
- 5: Flexible Tuned Port
- 6: Low Frequency Device
- 7: Input Terminal
- 8: Mounting Straps
- 9: Mounting Hardware

Material Specs

- High Impact Polystyrene
- High Impact Polystyrene
- Composite Polyurethane/Vinyl
- Medium Density Fiber

James
LOUDSPEAKER™

535 Airpark Road, Napa, CA 94558

Ph: 707.265.6343

www.JamesLoudspeaker.com