

ASSEMBLY INSTRUCTION FOR

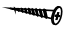



MIRROR-DRESSER

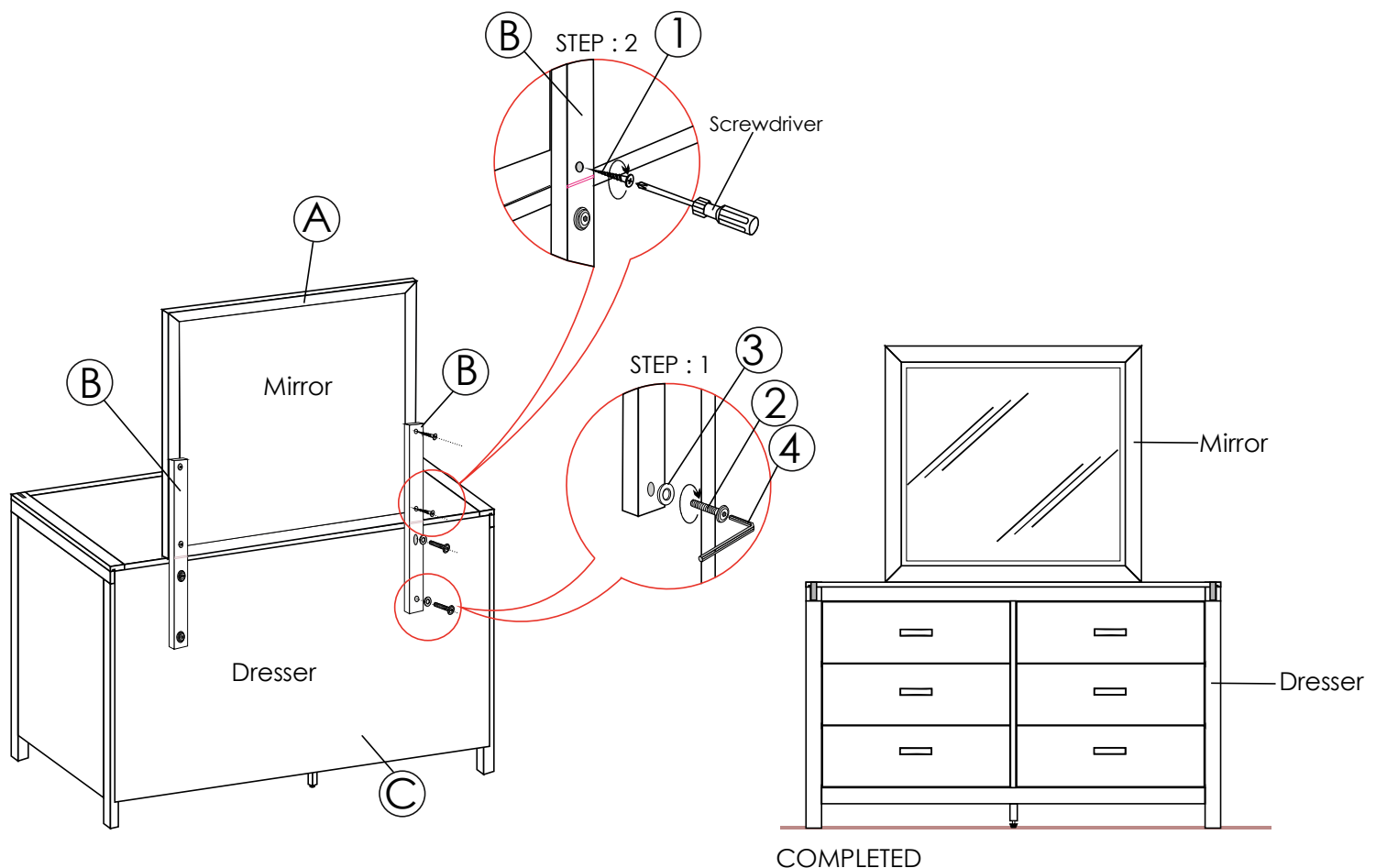
WN100MR-WN100DR

Caution: Please read instructions thoroughly before unpacking assembly parts. Sharp, exposed staple tips can cause injury, therefore, for your protection, please remove any exposed staples used in packing.

1. We recommend that you should assemble this product with the assistance of another person; this will make assembly easier, and will help to eliminate damage to the product or injury to persons during assembly.
2. Be sure to check all packing materials carefully for small parts that may come loose inside the carton during shipment.
3. Please do not over tighten screws or bolts.
4. Please put all parts on a non-abrasive floor before assembly, and follow the assembly steps to assemble your newly purchased product correctly and efficiently.

PART LIST			
NO	PART DESC	CODE	QTY
A	MIRROR	WN100MR	1 PC
B	SUPPORT SLAT	WN100MRSLT	2 PCS
C	DRESSER	WN100DR	1 PC

HARDWARE LIST				
NO		HARDWARE DESC	CODE	QTY
1		CBS. SCREW - M4 x 32mm	WN100MRHW	4 PCS
2		JCBC BOLT - M6 x 50mm		4 PCS
3		FLAT WASHER - M6 x 19mm		4 PCS
4		ALLEN KEY - M4 x 58mm		1 PC
PACKED WITH MIRROR BOX				



ASSEMBLY INSTRUCTION FOR

CHEST

WN100CH


Caution: Please read instructions thoroughly before unpacking assembly parts. Sharp, exposed staple tips can cause injury, therefore, for your protection, please remove any exposed staples used in packing.

1. We recommend that you should assemble this product with the assistance of another person; this will make assembly easier, and will help to eliminate damage to the product or injury to persons during assembly.
2. Be sure to check all packing materials carefully for small parts that may come loose inside the carton during shipment.
3. Please do not over tighten screws or bolts.
4. Please put all parts on a non-abrasive floor before assembly, and follow the assembly steps to assemble your newly purchased product correctly and efficiently.

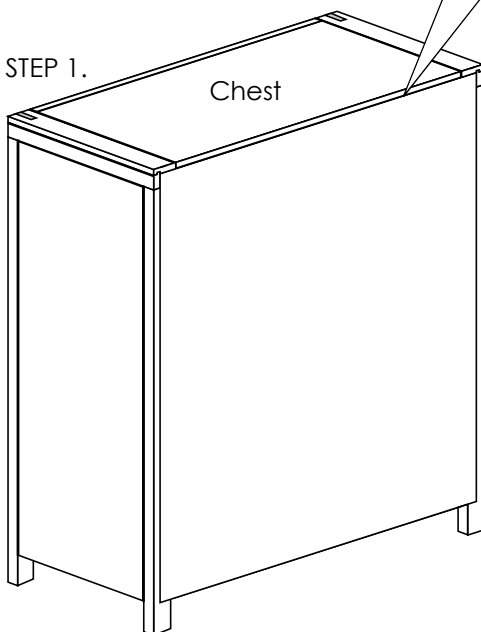
PART LIST

NO	PART DESC	CODE	QTY
A	CHEST	WN100CH	1 PC

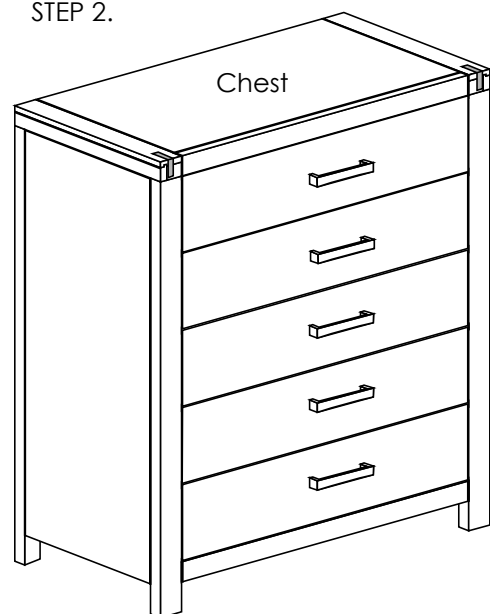
HARDWARE LIST

NO		HARDWARE DESC	CODE	QTY
1		Anti - Tip Kit	WN100ATKT	SET

STEP 1.



STEP 2.



COMPLETED

ASSEMBLY INSTRUCTION FOR

DRESSER

WN100DR


Caution: Please read instructions thoroughly before unpacking assembly parts. Sharp, exposed staple tips can cause injury, therefore, for your protection, please remove any exposed staples used in packing.

1. We recommend that you should assemble this product with the assistance of another person; this will make assembly easier, and will help to eliminate damage to the product or injury to persons during assembly.
2. Be sure to check all packing materials carefully for small parts that may come loose inside the carton during shipment.
3. Please do not over tighten screws or bolts.
4. Please put all parts on a non-abrasive floor before assembly, and follow the assembly steps to assemble your newly purchased product correctly and efficiently.

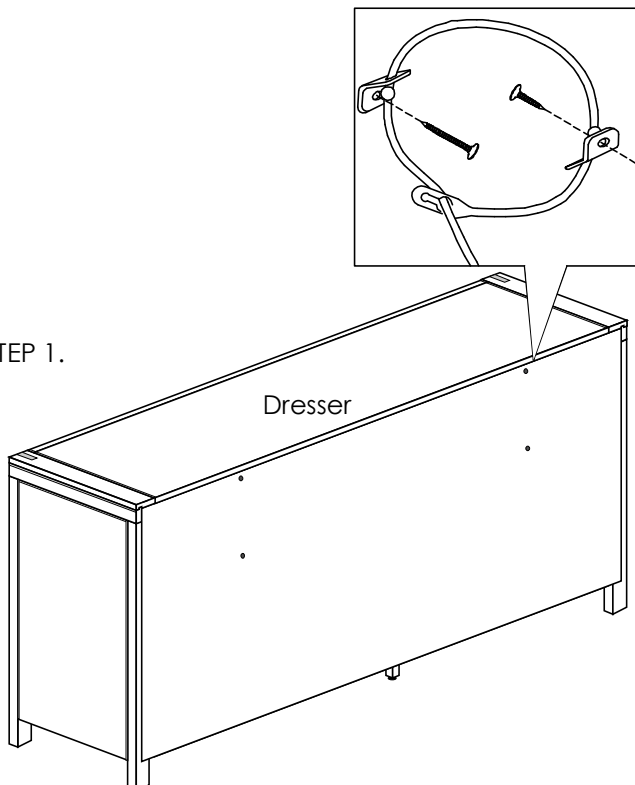
PART LIST

NO	PART DESC	CODE	QTY
A	DRESSER	WN100DR	1 PC

HARDWARE LIST

NO		HARDWARE DESC	CODE	QTY
1		Anti - Tip Kit	WN100ATKT	SET

STEP 1.



STEP 2.

