



The Art of Preservation
An artful approach to undercounter refrigeration

S4 Series
Use & Care Manual
Single Zone Wine & Beverage Coolers

S4-100SS | S4-100PANR
S4-125SS | S4-125PANR
S4-150SS | S4-150PANR



TABLE OF CONTENTS



SAFETY INSTRUCTIONS

Important Safety Information	4
------------------------------	---

INSTALLATION INSTRUCTIONS

Anti-Tip Bracket Installation	5
Hinge Anti-Tip Installation	5
Anti-Tip Installation on Freestanding Unit	6
Built-In Installation Guidelines	8
Cabinet Dimensions	8
Open Door Dimensions	8
Electrical Outlet Rough-In Location	9
Rough-In Dimensions	9
Built-In Panel Ready Installation Guidelines	10
Cabinet Dimensions	10
Open Door Dimensions	10
Electrical Outlet Rough-In Dimensions	11
Rough-In Dimensions	11
Panel Ready Frame Dimensions	12
Rough-In Dimensions	13
Panel Ready Pre-Drilled Handle Holes	13

OPERATING INSTRUCTIONS

Understanding the Control Panel	14
Basic Controls	14
Stirling Tempsync Progress Bar	15
Specialty Control	15
Demo Mode	15
Fahrenheit Mode	15
Sabbath Mode	15
Light Modes	16
Default Setting	16
Light Always On	16
Video Instructions	16
Shelving Configuration Options & Adjustment Instructions	17
Single Zone Shelving Adjustments	17
Video Instructions	17
Single Zone Shelving Options	20
StirlingFlex Shelf Design	21

CARE & MAINTENANCE

Carbon Filters Replacement	22
----------------------------	----

WARRANTY

Warranty & Service	23
Exclusions from Warranty	23



Congratulations on your new **STIRLING** appliance!

We invite you to read the user guide to ensure you get the most out of your wine & beverage cooler. We are confident that your new appliance has been engineered with our commitment to quality, performance, and luxury, ensuring many years of enjoyment. Should you need assistance or have any questions, please do not hesitate to reach out. As a proud Canadian, family-owned business, we have taken great pride in manufacturing your Stirling appliance in Elora, Ontario and are always committed to providing exceptional customer service whenever you need it.

Thank you again for choosing Stirling.

Cheers!

A handwritten signature in dark ink, appearing to read 'Doug D. Greenway'.

Doug D. Greenway
President

A handwritten signature in dark ink, appearing to read 'Phil Greenway'.

Phil Greenway
President

STIRLING

Important Safety Information



WARNING



Read all instructions before using your wine and beverage cooler.

- Do not move your wine & beverage cooler while it is loaded with beverages. You may distort the cabinet. The wine & beverage cooler should be installed in a suitable place to avoid the possibility of touching the compressor.
- This appliance should not be used by children, and or by individuals with reduced physical, sensory, or mental capabilities. This product should only be operated by individuals with knowledge on how to operate the appliance and have the capacity to understand the hazards involved. Children shall not play with the appliance. Cleaning and user maintenance shall not be performed by children without supervision.
- If the power cord is damaged, it must be replaced by a Stirling Marathon authorized servicer or a similarly qualified individual to avoid a hazard.
- If the appliance is left empty for long periods, switch off, clean, dry the interior and leave the door open to prevent mould or odours developing in the appliance.



DANGER



To reduce the risk of fire, electrical shock, or injury when using your appliance, follow these basic precautions:

- **DO NOT USE AN EXTENSION CORD**
- Risk of child entrapment
 - Before you throw away your previous appliance, please ensure to remove the door. Leave the shelves in place so that children may not easily climb inside.
 - Children should be supervised to ensure that they do not play with the appliance.
- Never clean appliance parts with flammable fluids. The fumes can create a fire hazard or explosion.
- Do not store explosive substances such as aerosol cans with flammable propellant in this appliance. The fumes can create a fire hazard or explosion.
- Keep ventilation openings, in the appliance enclosure or built-in structure, clear of obstruction;
- To avoid a hazard due to the possible instability of the appliance, it must be levelled following the instructions along with the anti-tip bracket
- Do not damage the refrigerant circuit.
- When positioning the appliance, ensure the power cord is not pinched or damaged.
- Do not locate multiple portable socket-outlets or portable power supplies at the rear of the appliance.
- Flammable and explosive items should never be put in or stored near the appliance.

CAUTION! Your wine & beverage cooler is equipped with a three-prong power cord which has a ground wire. The power cord should never be altered or used with an extension cord or power bar. Improper use of the grounding plug can result in the risk of electric shock. Consult a qualified electrician or service person if the grounding instructions are not completely understood. If the power cord is damaged, it must be replaced by a qualified technician.

STIRLING

- A) **DANGER** - Risk of fire or explosion. Flammable refrigerant used. Do not use mechanical devices to defrost your wine & beverage cooler. Do not puncture refrigerant tubing. This marking shall be located on or near any evaporator that can be contacted by the user.
- B) **DANGER** - Risk of fire or explosion. Flammable refrigerant used. To be repaired only by trained service personnel. Use only manufacturer-authorized service parts. Any repair equipment used must be designed for flammable refrigerants. Follow all manufacturer repair instructions. Do not puncture refrigerant tubing. This marking shall be located near the machine compartment.
- C) **CAUTION** - Risk of fire or explosion. Dispose your wine & beverage cooler properly in accordance with the applicable federal or local regulations. Flammable refrigerant used. This marking shall be located on the exterior of the wine & beverage cooler.
- D) **CAUTION** - Risk of fire or explosion due to puncture of refrigerant tubing; follow handling instructions carefully. Flammable refrigerant used. This marking shall be located near all exposed refrigerant tubing.



Hinge Anti-Tip Installation

For built-in applications, the anti-tip bracket for this application can be found behind the top door hinge. Once the cooler is inside the cabinet, please follow the following steps:

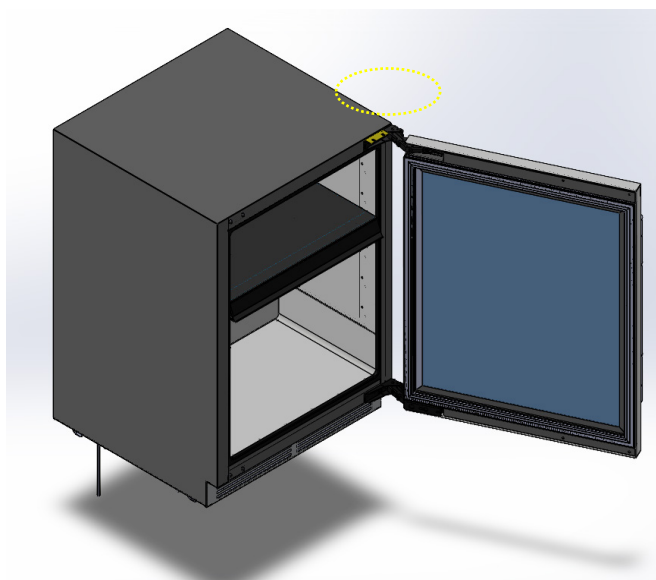


Fig.1 Wine cooler with anti-tip

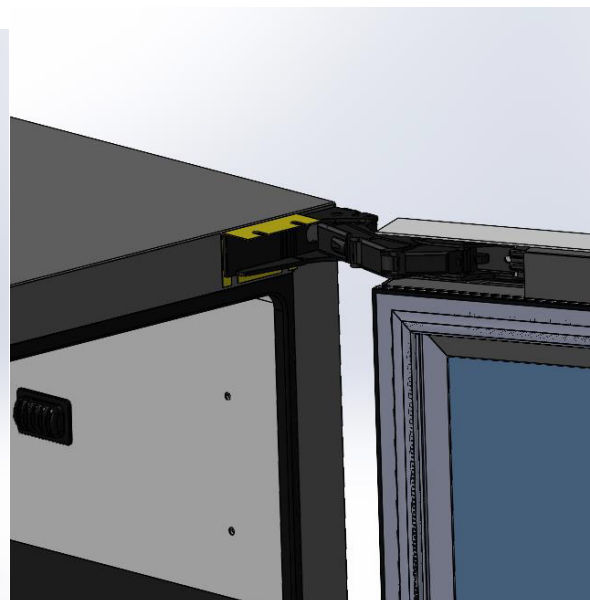
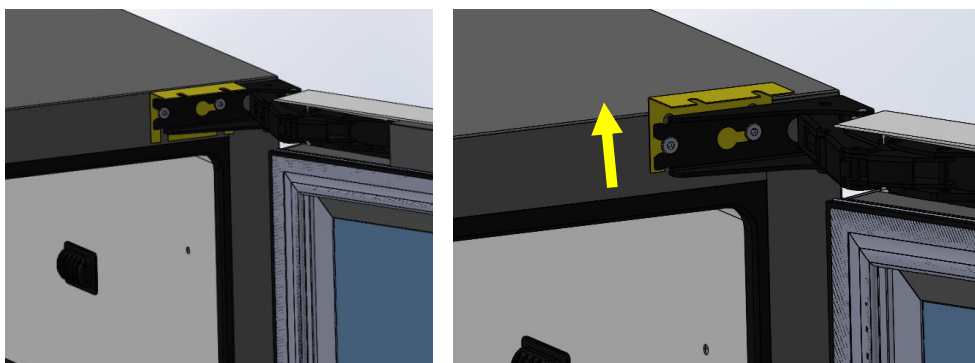


Fig.2 Detailed view of anti-tip

STIRLING

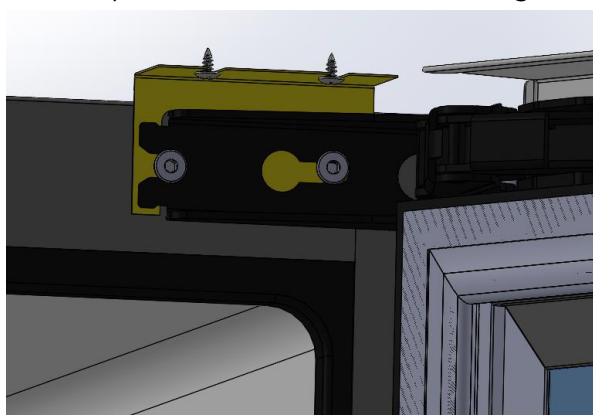
Step 1: Fully open the door, remove the black hinge cover and loosen the screws using Philips screwdriver. To loosen, rotate 2.5 turns counterclockwise. Lift the anti-tip bracket so the top flange touches the underside of the cabinet above.



Hinge raising to the desired height

Step 2: Use the two self-tapping screws found in your STIRLING enclosure package to secure the anti-tip bracket with the cabinet.

Step 3: Turn the screws from step 1 clockwise 2.5 turns until tight.



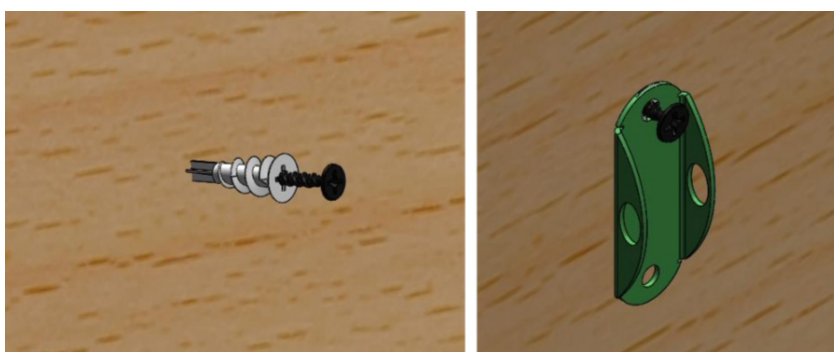
Fasten the top flange with self-tap screws

Anti-Tip Installation On Freestanding Unit

Step 1: Use a pen to mark the screw hole positions on the metal mount against the wall.

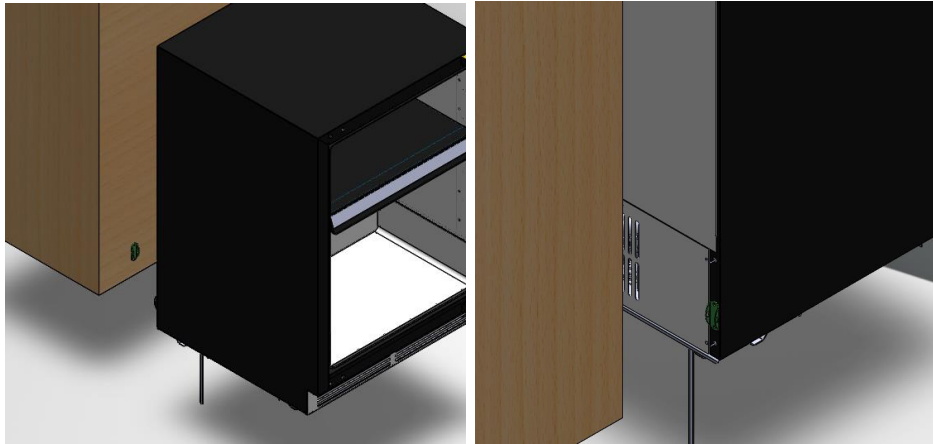
Step 2: Secure the wall anchor to the drywall with a long screw using a screwdriver.

Step 3: Remove the screw, then position the metal bracket so that it is sandwiched between the anchor and the screw before reattaching the screw.

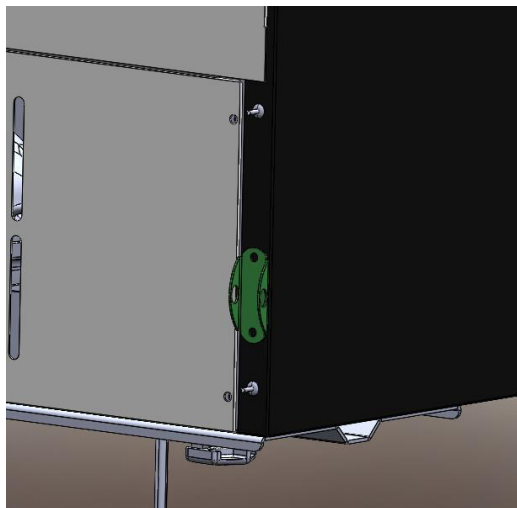


STIRLING

Step 4: Note: Install the metal bracket along the lower edge behind the wine cooler or at the side margin of the drywall to ensure sufficient operational space during installation.



Step 5: Using a self-tapping screw, secure the second metal bracket to the lower back leg of the wine cooler, as shown in the figure.



Step 6: Pass the metal strap through both mount holes of metal brackets. Secure the strap by fastening the connector



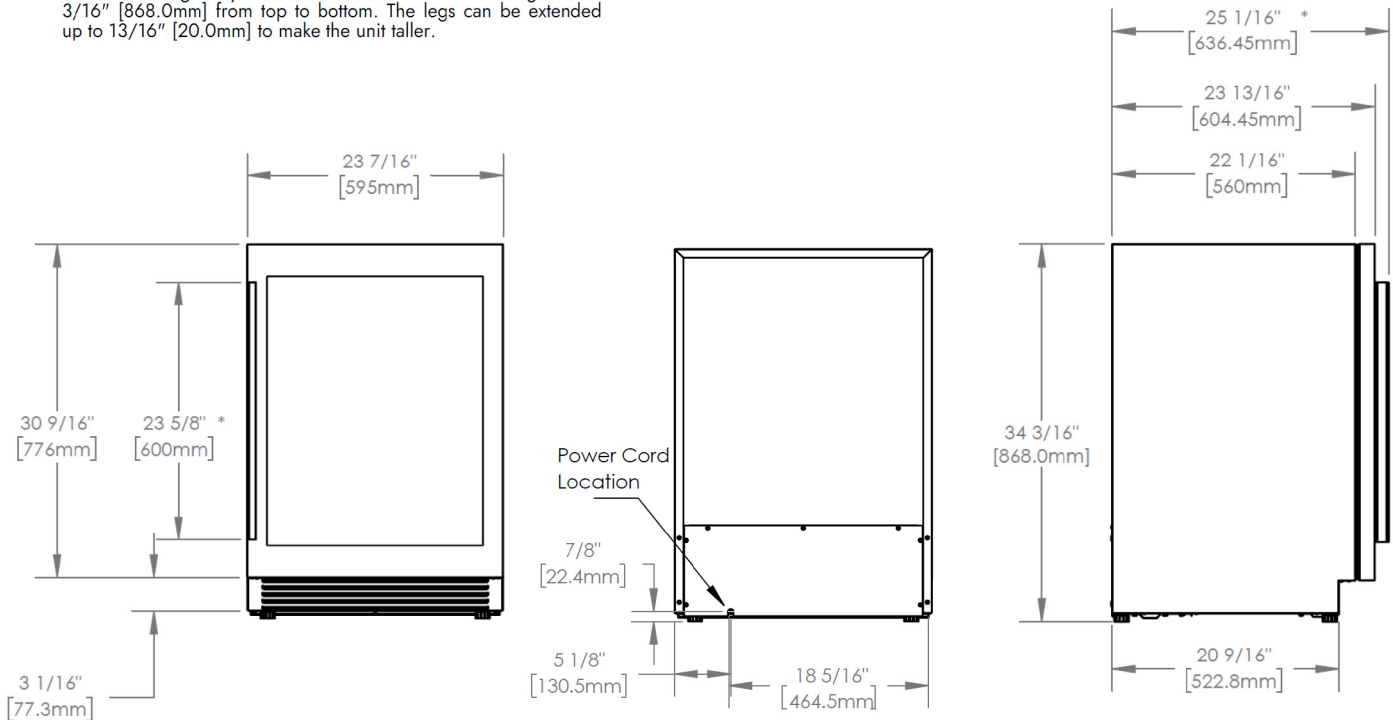
STIRLING

Built-In Installation Guidelines

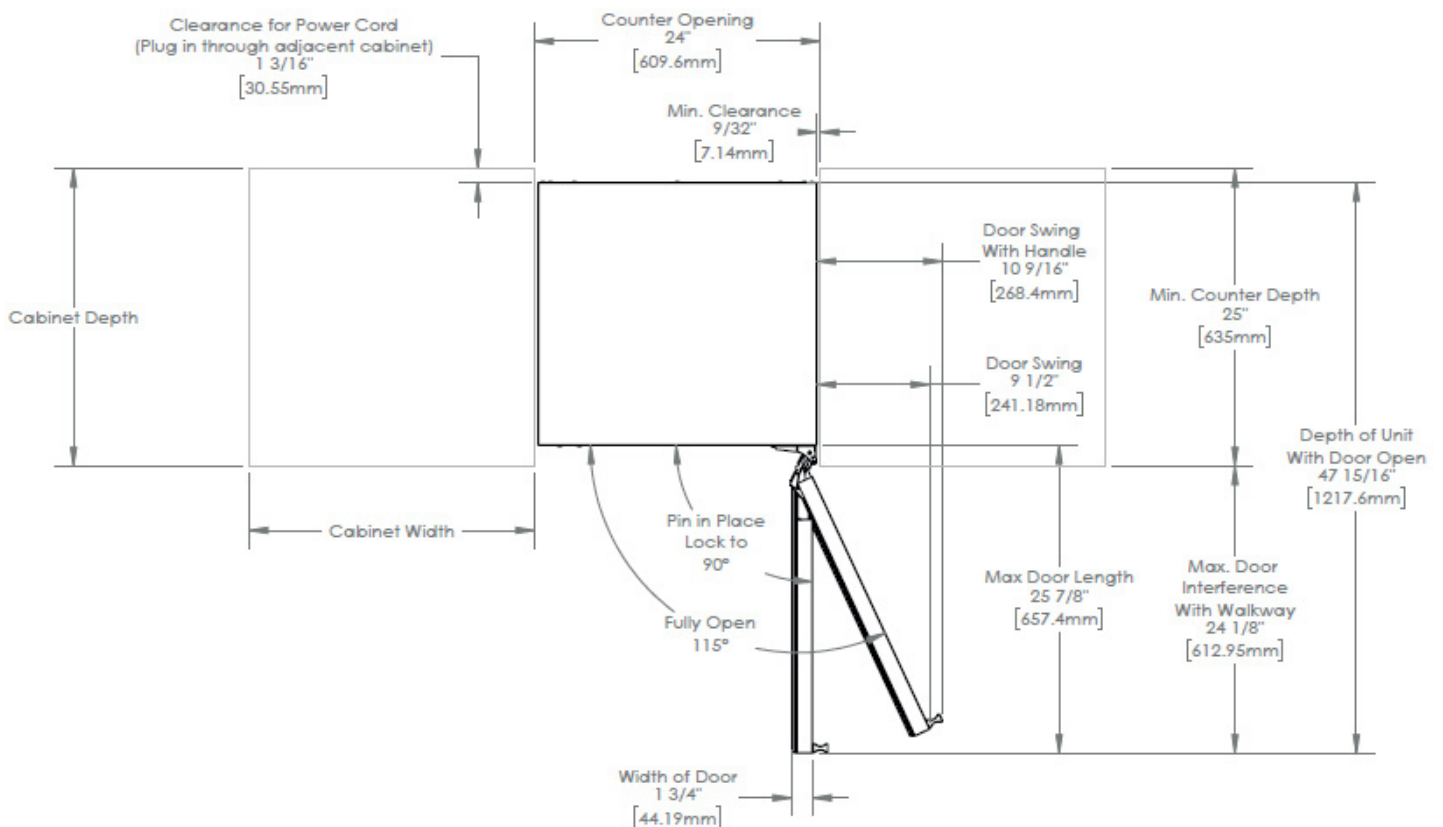
Model: S4-100SS, S4-125SS, S4-150SS

Cabinet Dimensions

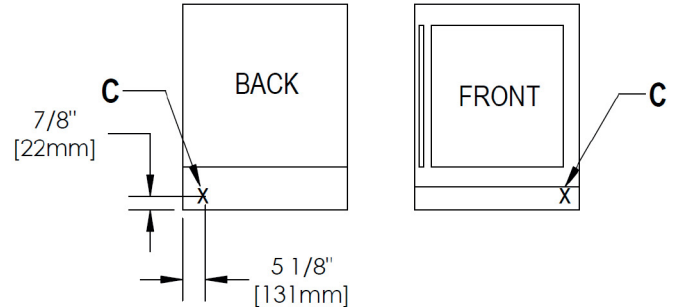
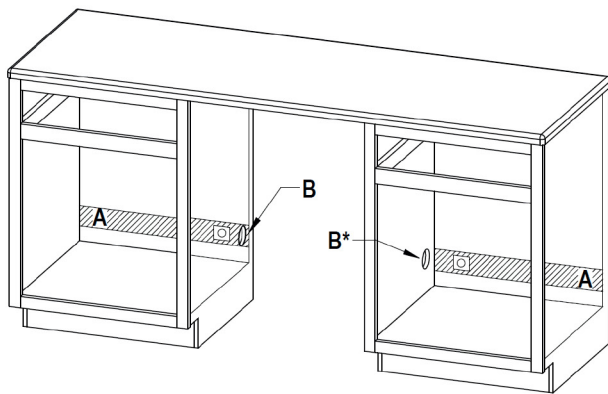
Note: With legs fully retracted the minimum overall height is 34 3/16" [868.0mm] from top to bottom. The legs can be extended up to 13/16" [20.0mm] to make the unit taller.



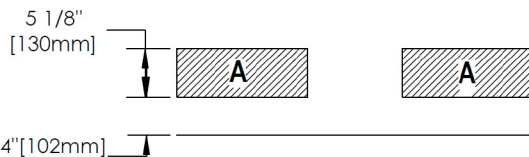
Open Door Dimensions



Electrical Outlet Rough-In Location



A: Recommended area for installation connection.



B: To route power cord to outlet - a 2 1/2" [63mm] diameter hole through wall of the adjacent cabinet is recommended.

*The cabinet on the right hand side (when facing the front of the cabinet) is the preferred location to wire through.

C: Location of power cord is on the back left of the unit

For flush installation it is recommended to plug in the power cord beside the unit, not directly behind.

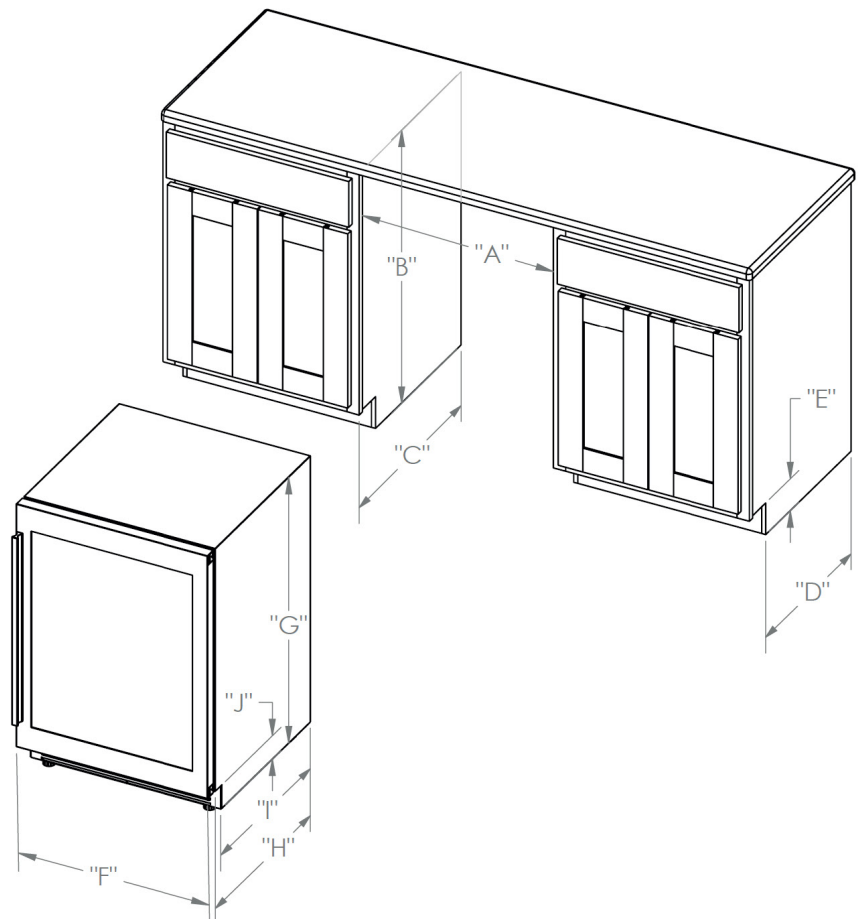
Rough-In Dimensions

Rough-In Dimensions

A. Rough-In Width	24" [610mm]
B. Rough-In Height	34 1/2" [877mm] to 35" 1/8" [892mm]
C. Rough-In Depth	25" [635mm]
D. Rough-In Depth to Kickplate	21 3/4" [552mm]
E. Rough-In Kickplate Height	3 1/16" [77mm]

Product Dimensions

F. Width	23 7/16" [595mm]
G. Height	34 3/16" [868mm] to 35" [888mm]
H. Depth	23 13/16" [605mm]
I. Depth to Kickplate	20 9/16" [523mm]
J. Kickplate Height	3 1/16" [77mm]



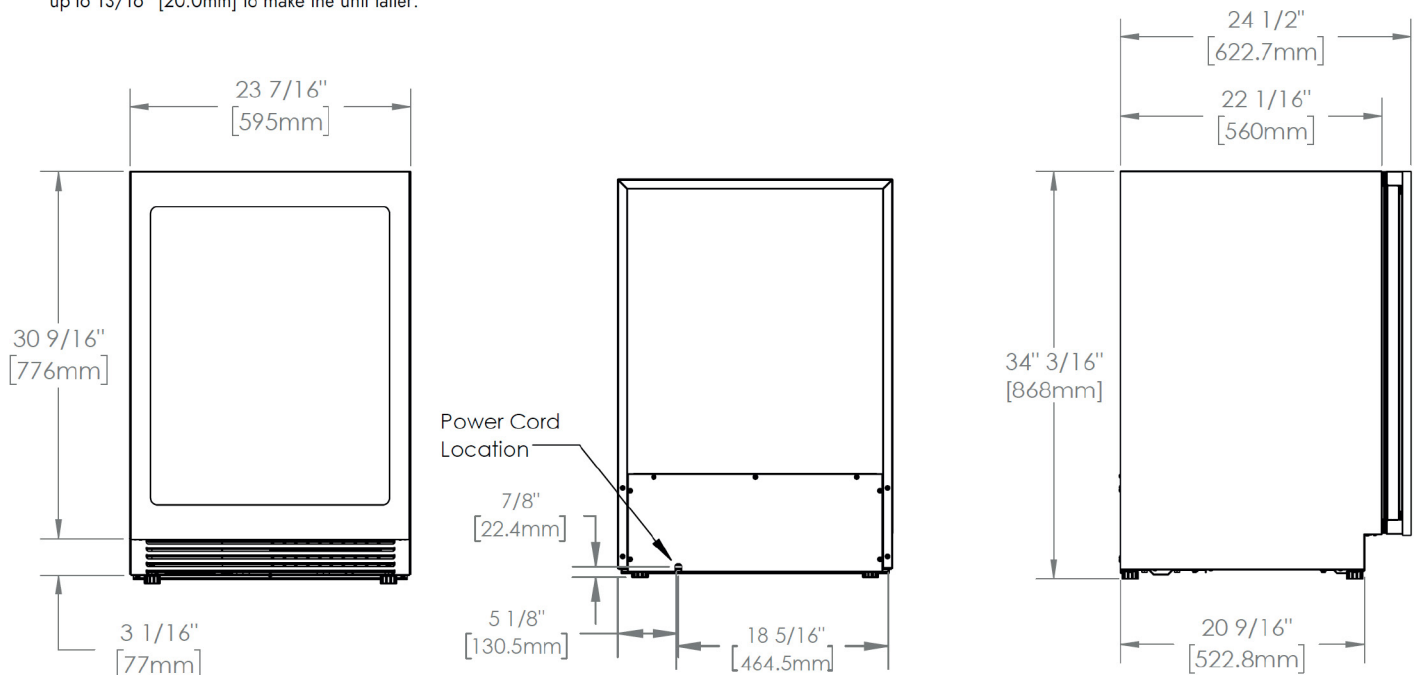
STIRLING

Built-In Panel Ready Installation Guidelines

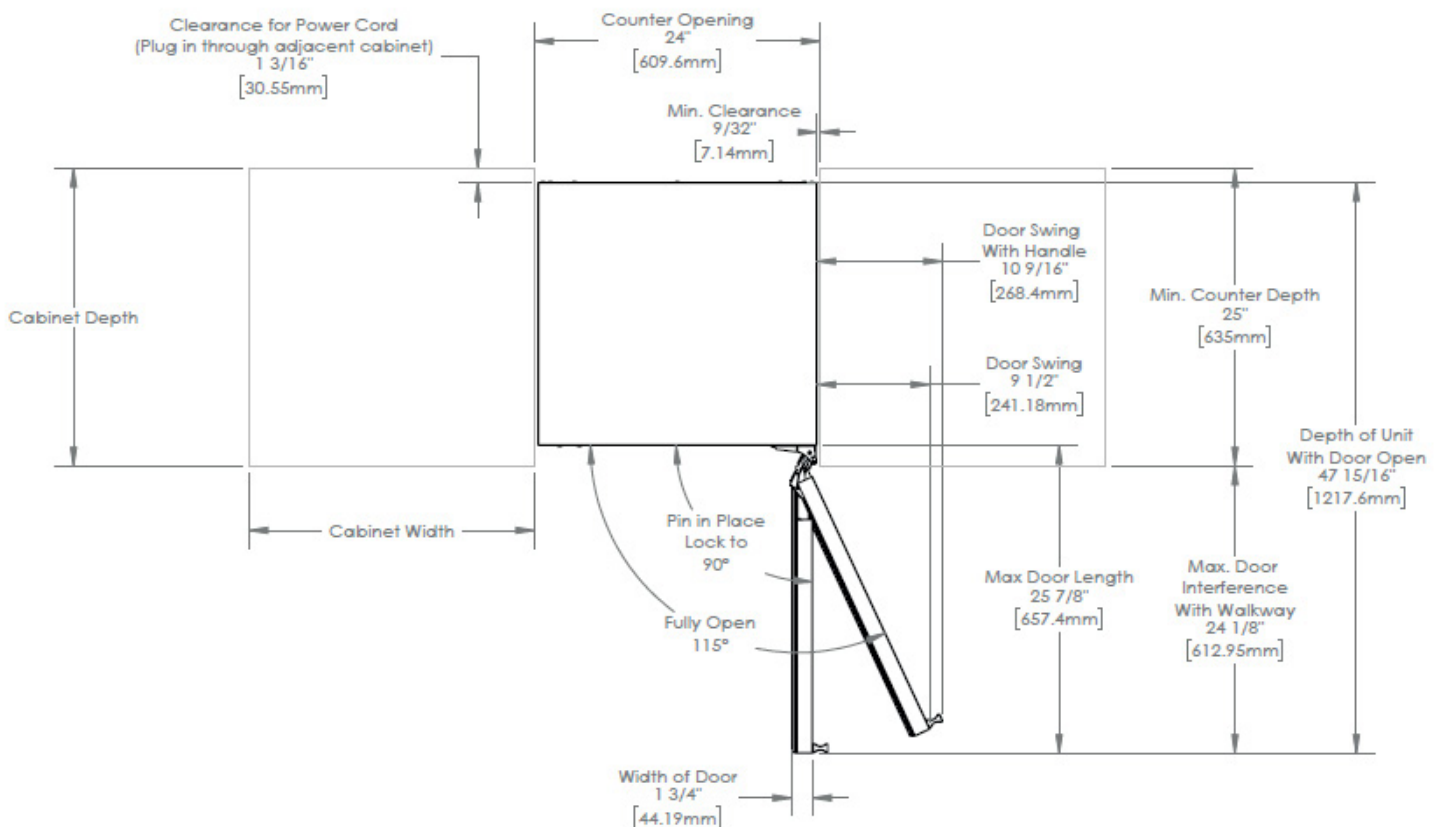
Model: S4-100PANR, S4-125PANR, S4-150PANR

Cabinet Dimensions

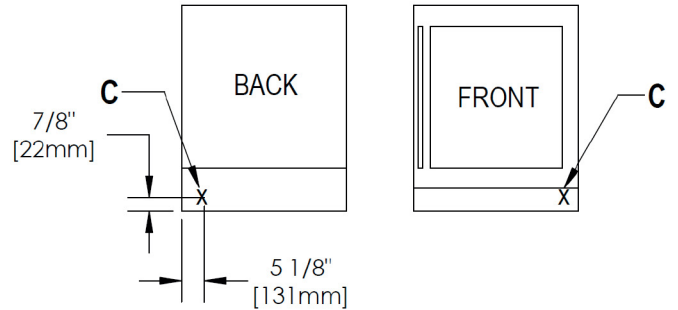
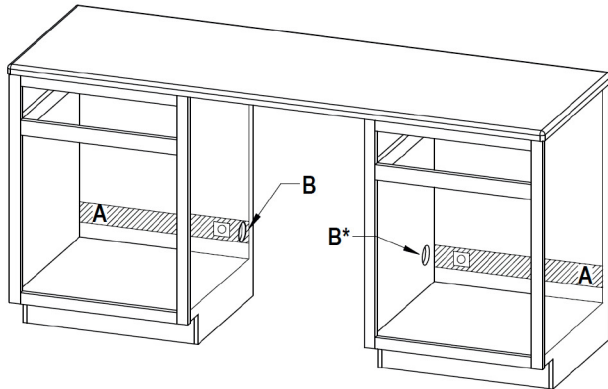
Note: With legs fully retracted the minimum overall height is 34 3/16" [868.0mm] from top to bottom. The legs can be extended up to 13/16" [20.0mm] to make the unit taller.



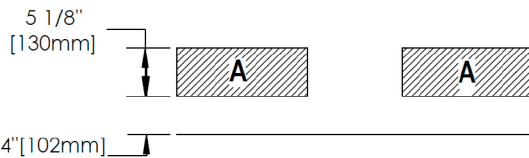
Open Door Dimensions



Electrical Outlet Rough-In Location



A: Recommended area for installation connection.



B: To route power cord to outlet - a 2 1/2" [63mm] diameter hole through wall of the adjacent cabinet is recommended.

*The cabinet on the right hand side (when facing the front of the cabinet) is the preferred location to wire through.

C: Location of power cord is on the back left of the unit

For flush installation it is recommended to plug in the power cord beside the unit, not directly behind.

Rough-In Dimensions

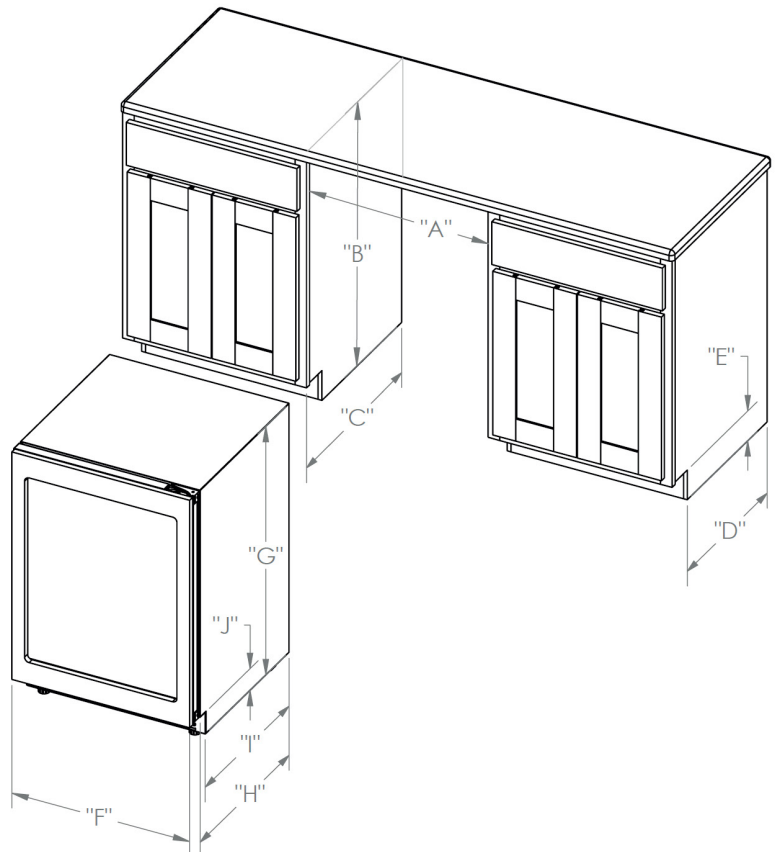
Rough-In Dimensions

A. Rough-In Width	24" [610mm]
B. Rough-In Height	34 1/2" [877mm] to 35 1/8" [892mm]
C. Rough-In Depth	26" [660mm]
D. Rough-In Depth to Kickplate	21 13/16" [554mm]
E. Rough-In Kickplate Height	3 1/16" [77mm]

Product Dimensions

F. Width	23 7/16" [595mm]
G. Height	34 3/16" [868mm] to 35" [888mm]
H. Depth*	24 3/4" [629mm]
I. Depth to Kickplate	20 9/16" [523mm]
J. Kickplate Height	3 1/16" [77mm]

*With 3/4" (19mm) thick panel.

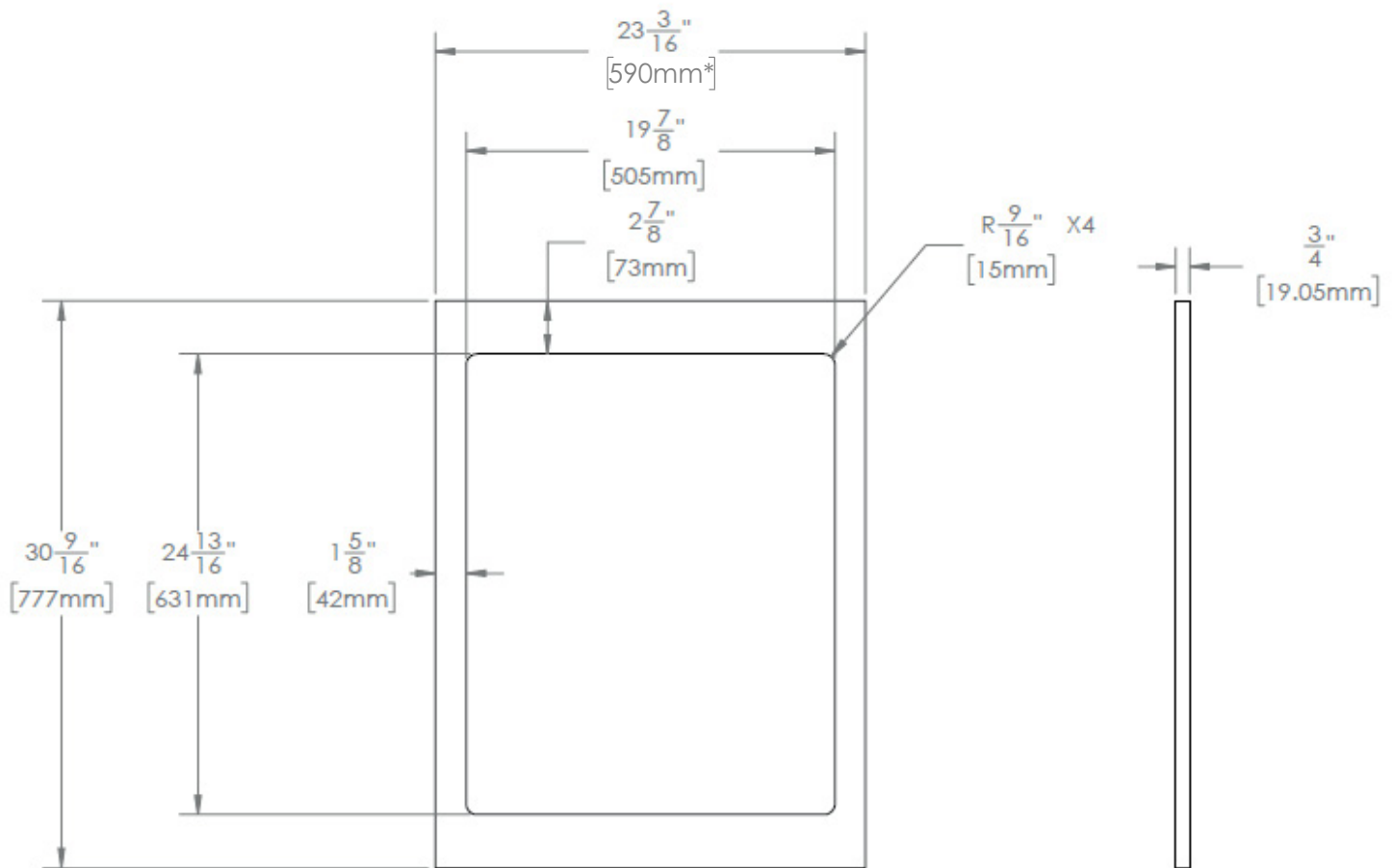


STIRLING

Panel Ready Frame Dimensions

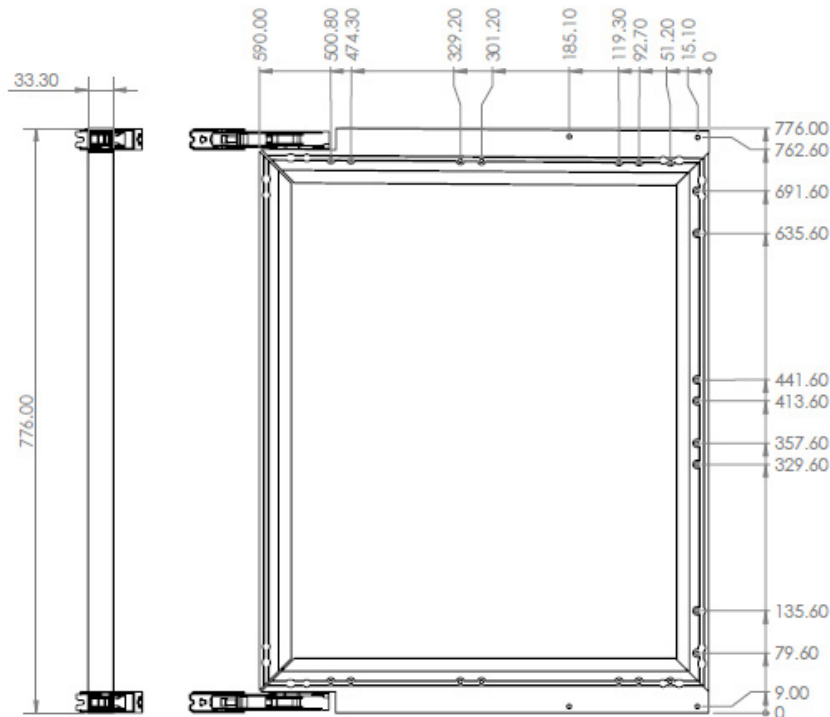
Model: S4-100PANR, S4-125PANR, S4-150PANR

Panel Ready Frame Dimensions



It is recommended the panel to be 590mm width but +/- 1mm tolerance is acceptable. Also, the aluminum frame can accommodate 5/8" thick panels as well, but will require shorter screws. Please discuss with your installer

Panel Ready Pre-drilled Handle Holes



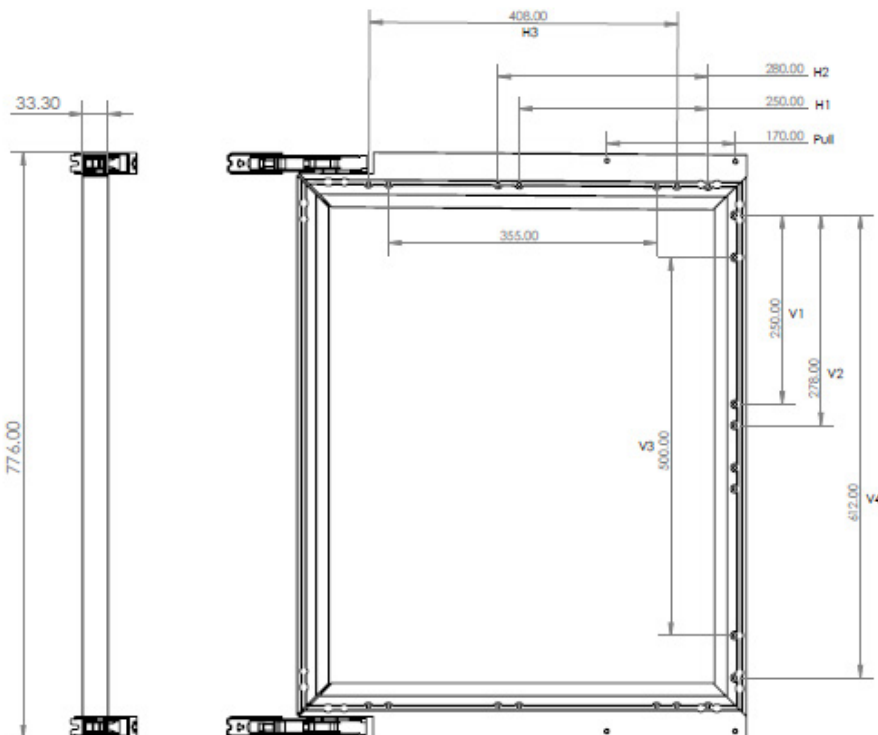
NOTE B: Manually adding custom screw holes can be done by drilling M5 holes through the aluminum frame.

i) Holes drilled for vertical handles should be 15.3 ± 0.5 mm from the vertical edge closest to the handle.

ii) Holes drilled for horizontal handles should be 41.6 ± 0.5 mm from the horizontal edge closest to the handle.

Center to Center

NOTE: All holes are M5



Vertical Handles

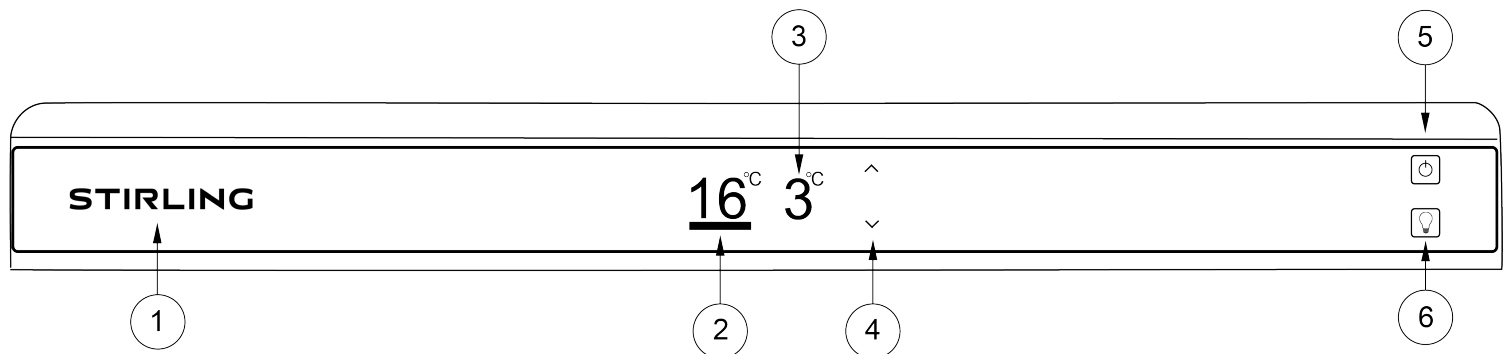
	CENTER TO CENTER DISTANCE	
NAME	mm	in
V1	250	$9 \frac{13}{16}$
V2	278	$10 \frac{15}{16}$
V3	500	$19 \frac{11}{16}$
V4	612	$24 \frac{1}{8}$

Horizontal Handles

	CENTER TO CENTER DISTANCE	
NAME	mm	in
Pull	170	$6 \frac{11}{16}$
H1	250	$9 \frac{13}{16}$
H2	280	11
H3	408	$16 \frac{1}{16}$

STIRLING

Understanding the Control Panel



- ❶ Back-lit Logo
- ❷ Stirling TempSync Progress Display Bar
- ❸ The Desired Set Temperature
- ❹ Temperature Adjustment
- ❺ Power Button
- ❻ Lights On/Off

BASIC CONTROLS



Press and hold for **5 seconds** to power on or off the wine cooler, this turns off all components and lights.

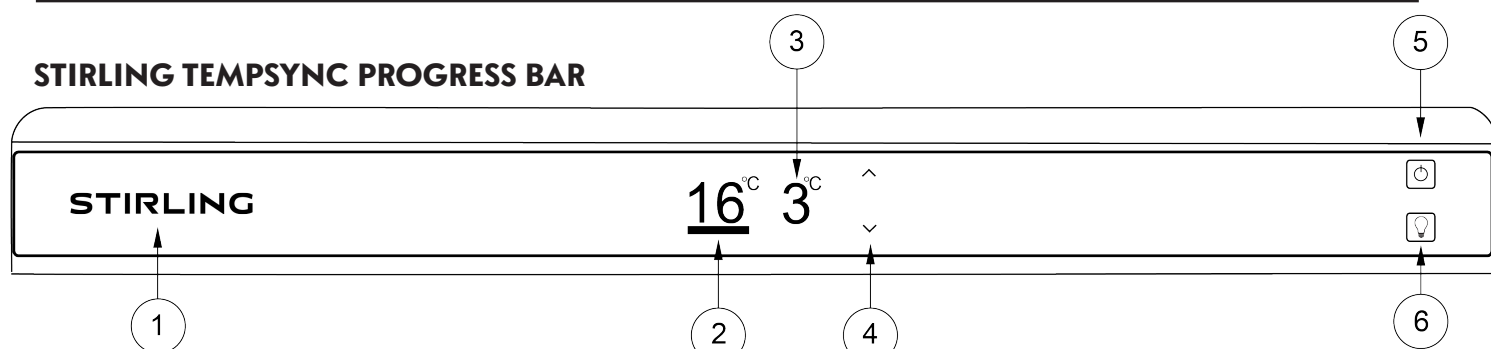
Press  or  to adjust the desired temperature of the wine & beverage cooler

To set the temperature simply press the arrows until you see the desired temperature. Once you land on the desired number the temperature is set. The number(s) displayed on the control panel will revert back to the actual ambient temperature in that zone.

Temperature control range: 3-20°C (37.4-68°F)

STIRLING

Understanding the Control Panel






The TFT screen displays the actual internal air temperature of your Stirling Wine & Beverage Cooler.

- ② Stirling TempSync Progress Display Bar will remain solid white once the set temperature is reached. The bars will “roll” while the appliance is in active TempSync mode, to synchronize the ambient temperature with the desired set temperature. The red rolling bar indicates it is warming the interior and the blue rolling bar indicates it is actively cooling.

⚠ Once you set your desired temperature setting it is recommended not to adjust it frequently. The thermostat is accurate and will maintain the temperature inside the wine & beverage cooler. Please note that depending on the thickness of the wine bottle (or cans) and loading of the shelves, the actual temperature of the wine may differ from the wine and beverage cooler setting by +/- 1-2°C.

SPECIALITY CONTROL

DEMO MODE:


Press  and  at the same time for **5 seconds** to enter demo mode. Once in demo mode all lights will turn ON, and the temperature display remains adjustable and will display the ambient temperature. If you prefer to have the lights off while in demo mode, you can simply touch the  icon. The compressor and blowers will not run in this setting. Exit demo mode by pressing the light and power button for another **5 seconds**.

FAHRENHEIT MODE:

Press both of the  and  arrows at the same time for **5 seconds**. This will change the temperature readout from °C to °F. To return to Celsius press and hold both right arrows  at the same time for **5 seconds**.

SABBATH MODE:

This setting is intended for users that celebrate certain religious observances & specific holidays. The appliance will actively cool but will not run at full capacity.

Press the right  arrow for **5 seconds** to enter Sabbath mode. All LED lights and button backlighting will turn off. Temperature display readout reduces to 50% brightness while the blowers and compressor function as normal. To leave Sabbath mode press and hold the upper arrow on the right of the display for **5 seconds**.

STIRLING

LIGHT MODES:





Press to turn on or off the lights.

DEFAULT SETTING:

Interior LED lights, logo and control buttons are OFF when door is closed and ON when door is open. Temperature display appears at 100% brightness when door is opened or closed.

LIGHT ALWAYS-ON:

To keep the lights on while the door is closed, Press . The LED lights, all control icons and logo remain ON all the time. To indicate that you are in Light Stay mode a light bulb symbol will appear beneath the temperature display numbers.

To return to default mode press  or wait 3 hours and the lights will automatically go back to default mode.

CLICK LINK OR
SCAN QR CODE FOR
VIDEO INSTRUCTIONS



STIRLING

Shelving Configuration Options & Adjustment Instructions

SINGLE ZONE SHELVING ADJUSTMENTS

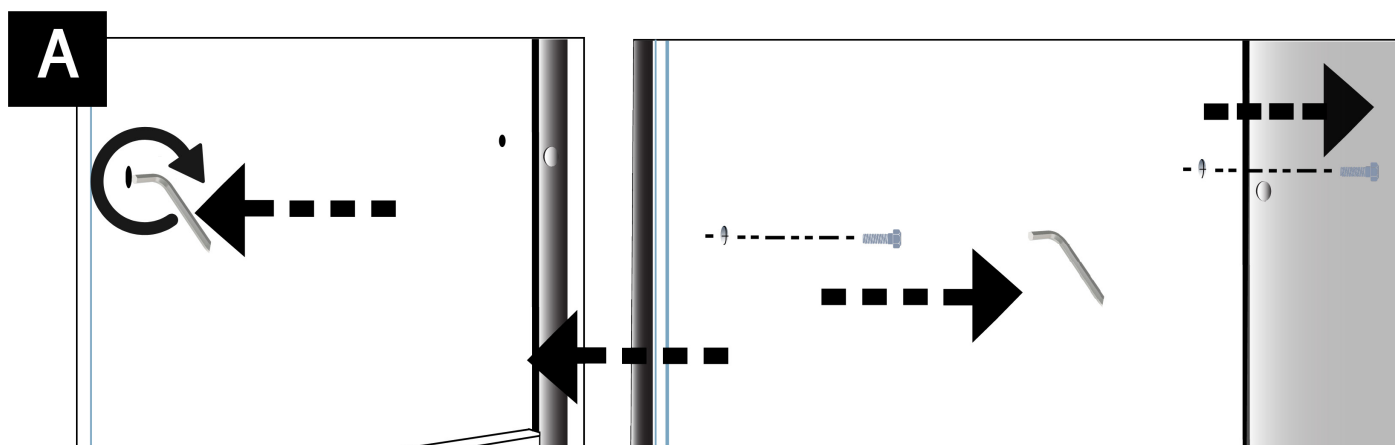
(S4-100SS, S4-125SS, S4-150SS, S4-100PANR, S4-125PANR, S4-150PANR)

Refer to images A-I below for visual representation of each step. For optimal versatility, your wine & beverage cooler has multiple different configurations of shelving positions. These shelving positions can be changed depending on preference and to accommodate different items of different shapes and sizes. To adjust a shelf position, follow the following steps:

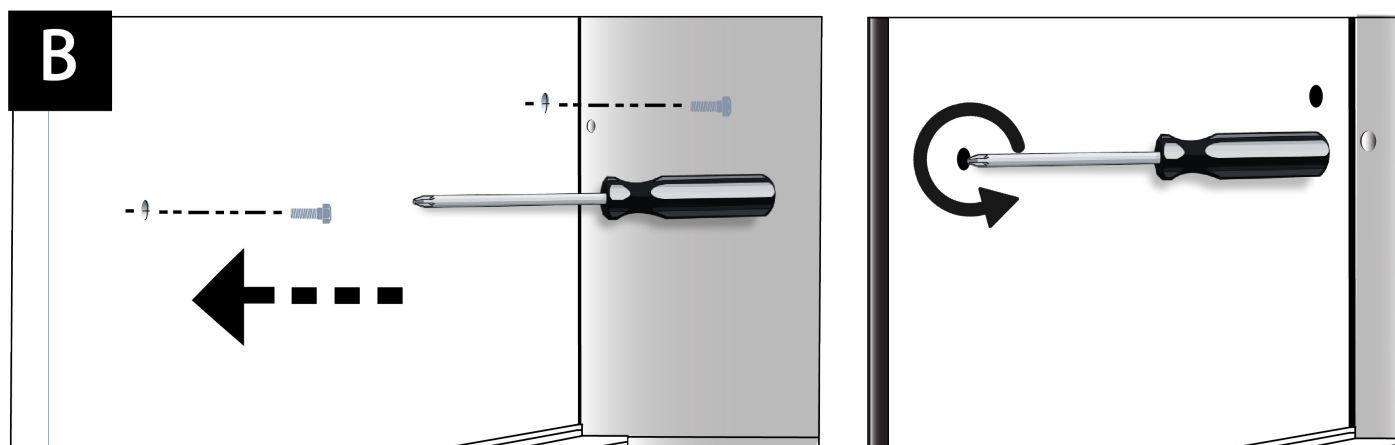
SCAN OR CLICK
LINK FOR VIDEO
INSTRUCTIONS



1. Identify the pre-drilled hole settings on the interior cabinet that you want to move the shelf to and remove the set screws with a 2.5mm hex key (A).

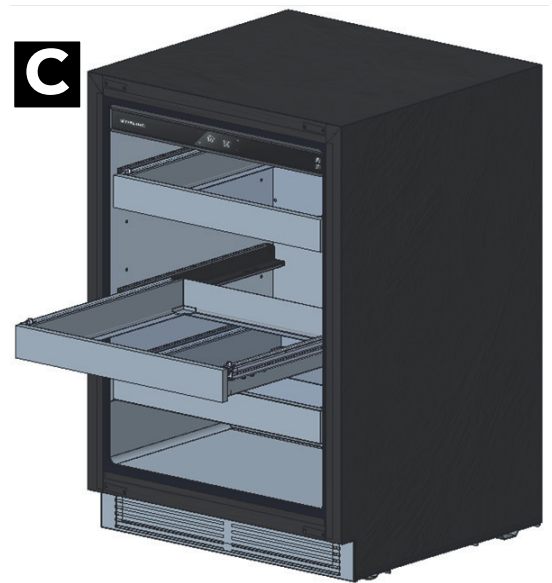


2. Insert the shelf lock fasteners using a Phillips screwdriver (B). The shelf screws should stick out approximately 4mm from the cabinet. If the screws are fully screwed in, the shelf rails will not be able to latch onto the screws.

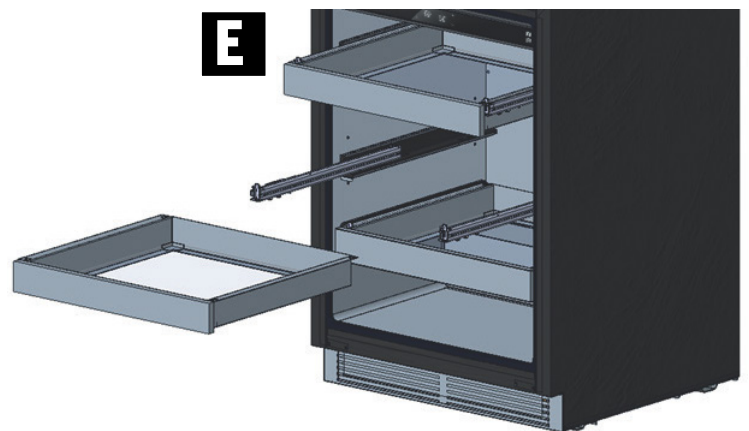
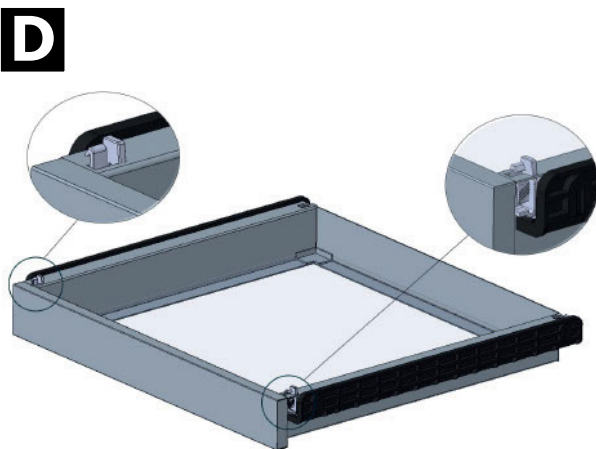


STIRLING

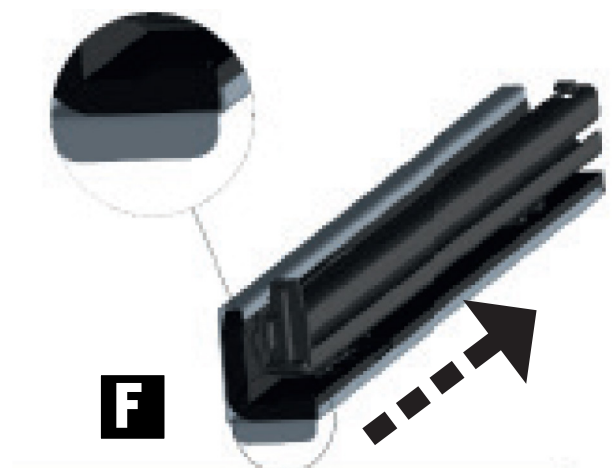
3. Fully extend the shelf you are choosing to move **(C)**.



4. Locate the two black coloured plastic latches on each side behind the front face of the shelf. Push the latches inward **(D)** towards each other and lift up on the shelf to unlatch and lift the shelf off the rails by pulling up and slightly forward, this will allow the back of the shelf to be removed from the back rail clips **(E)**.



5. Once the shelf is off its rails, place aside in a safe place and begin to adjust the two rails of the shelf. To do this, unlock the shelf rail mechanism by pulling the steel tab at the bottom of the rail towards you **(F)**. To lock the shelf rail mechanism, push the steel tab at the bottom of the rail towards the back of the cooler **(F)**.

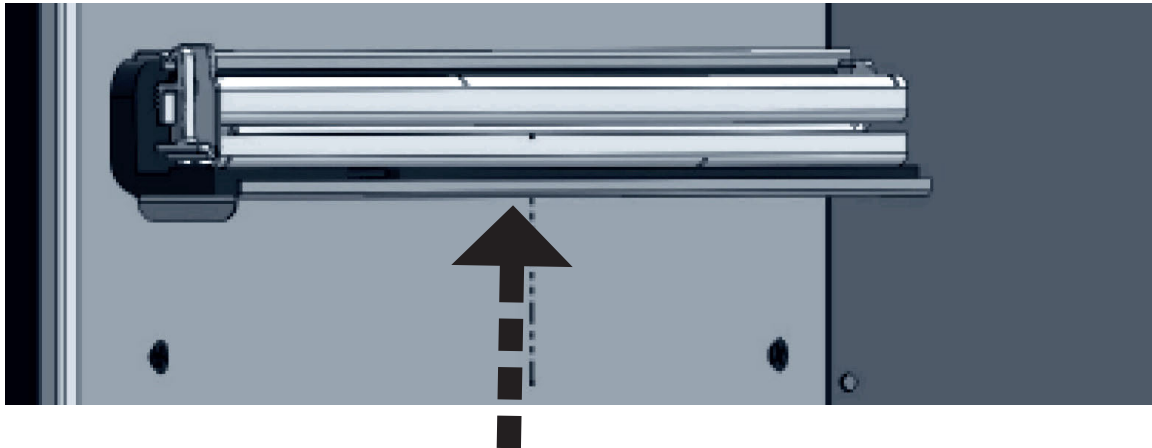


STIRLING

Shelving Configuration Options & Adjustment Instructions

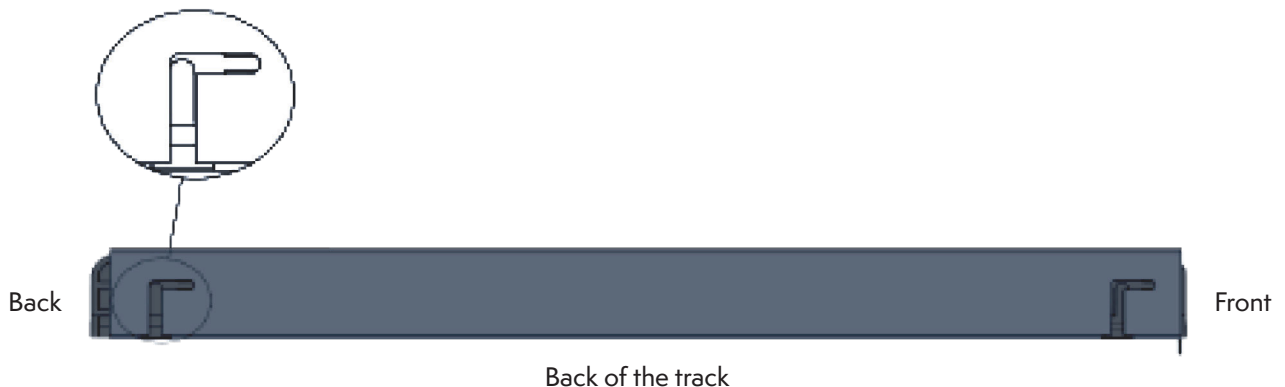
6. The rails can be removed by simply lifting up to detach it from the front and back screw (**G**). Please detach both rails from the inside of the wine & beverage cooler.

G



7. On the outer side of the rail there is a slot for the screws to go into (**H**). When installing the rail, confirm that the black slider component of the rail and the steel support component of the rail have their respective screw slots lined up, otherwise the rail will not sit correctly on the screws, the rail fully sits on the screws when it is level and lockable. The rail is lockable when the metal tab at the bottom of the rail can be pulled towards the door of the cooler (**F**), do this to ensure the rail will not move.

H



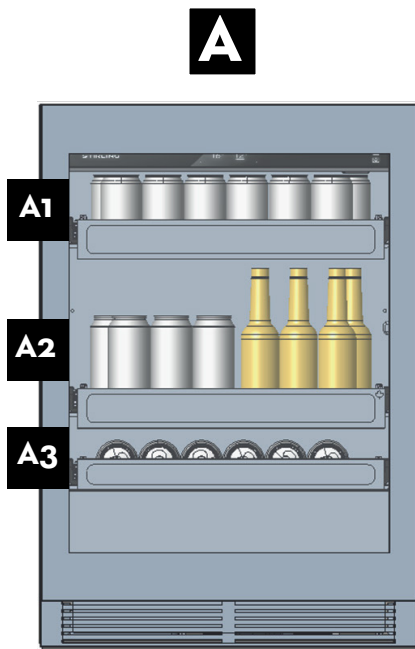
8. To reattach the shelf, gently pull the slider rail out of the cooler as far as it will travel (**E**). Once this is done put the shelf back on the rails by sliding it into the back clips first and then clicking it into the front rail latches. Attach the front rail latches by pushing inwards on the clip so it fits into the metal slot on each side of the shelf (**D**). After this is completed, the shelf will now be in its new desired location.

STIRLING

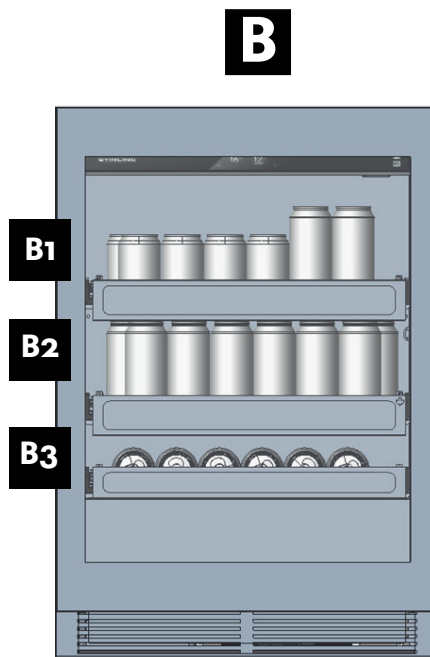
Single Zone Shelving Options

The Single Zone Stirling Wine and Beverage Cooler has 3 recommended configurations for shelving. These shelving positions optimize the use of space in the Cooler. See configuration **A**, **B**, and **C** below. Configuration **(A)** can fit a standing short can on the top shelf and a bottle on the middle shelf, however it will not fit a standing short can on the bottom shelf. Configuration **"B"** can fit a tall can on the top shelf and the middle shelf, however it is also not able to fit a standing short can on the bottom shelf and it must be on its side. Configuration **"C"** accommodates a standing short can on the bottom shelf, a standing tall can in the middle shelf and a standing short can on the top shelf.

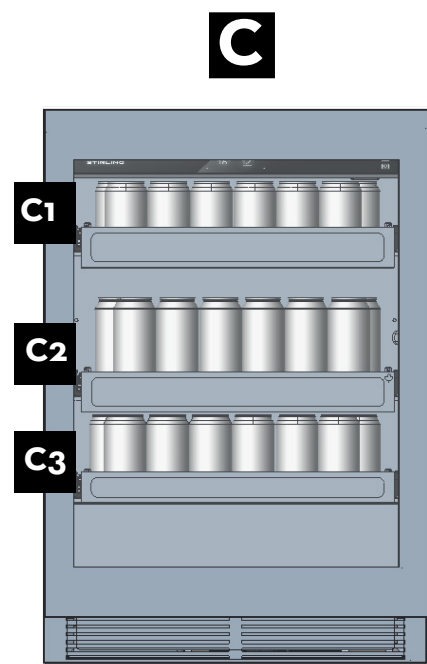
Note: Some shelving positions will have the capability to store certain sizes of cans and bottles. If shelves are moved to accommodate one type of beverage, it may be at a loss of space for another shelf.



- A1** 36X 12 oz/355ml
- A2** 36X 16 oz/473ml
49X 12 oz/355ml OR
- A3** 18X 12 oz/355ml



- B1** 36X 12 oz/355ml
36X 16 oz/473ml OR
- B2** 36X 16 oz/355ml
- B3** 36X 12 oz/355ml



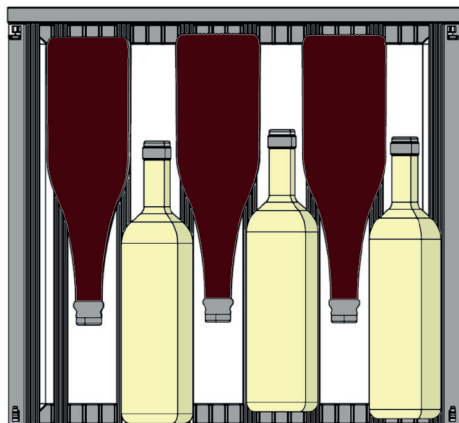
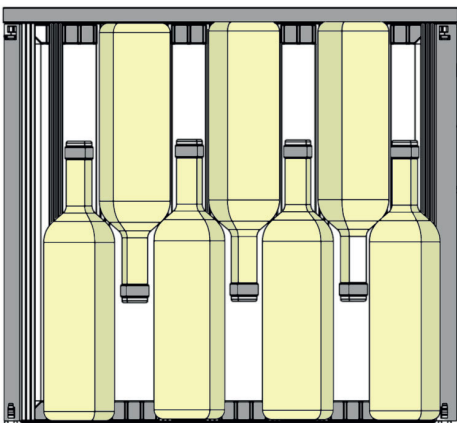
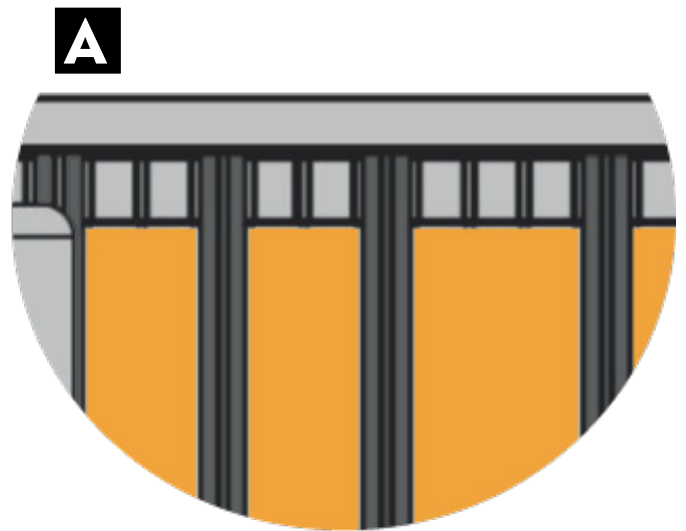
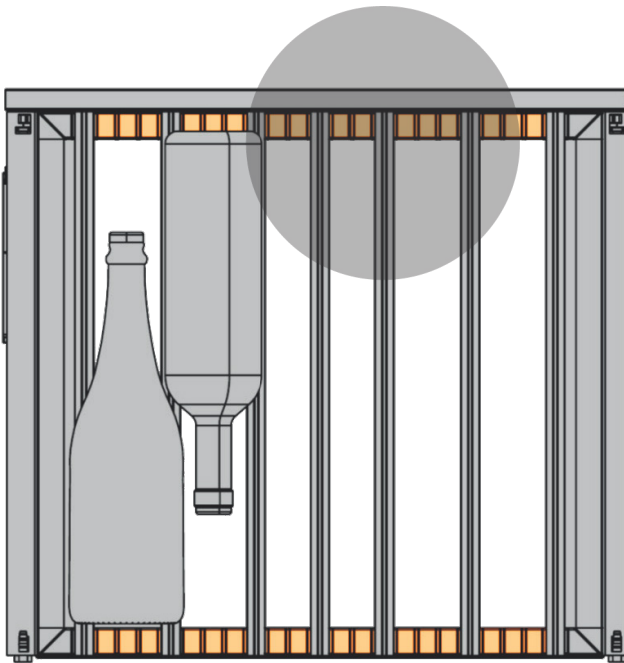
- C1** 36X 12 oz/355ml
- C2** 36X 12 oz/355ml
36X 16 oz/473ml OR
- C3** 36X 12 oz/355ml

STIRLING

Shelving Configuration Options & Adjustment Instructions

STIRLINGFLEX SHELF DESIGN

Adjustable aluminum shelf slats enable the flexibility to store large & abnormal bottle sizes such as champagne, prosecco and rosé. The silicone bottle contact inserts absorb and dampen any noise or vibrations from the wine & beverage cooler for silent preservation. Each wine shelf can accommodate 7 standard sized bottles. Widening the spacing between the shelf slats (**A**) will lower the bottles into the shelf frame so cherished wines will not hit the shelves above or below.



SCAN OR CLICK LINK
FOR VIDEO INSTRUCTIONS



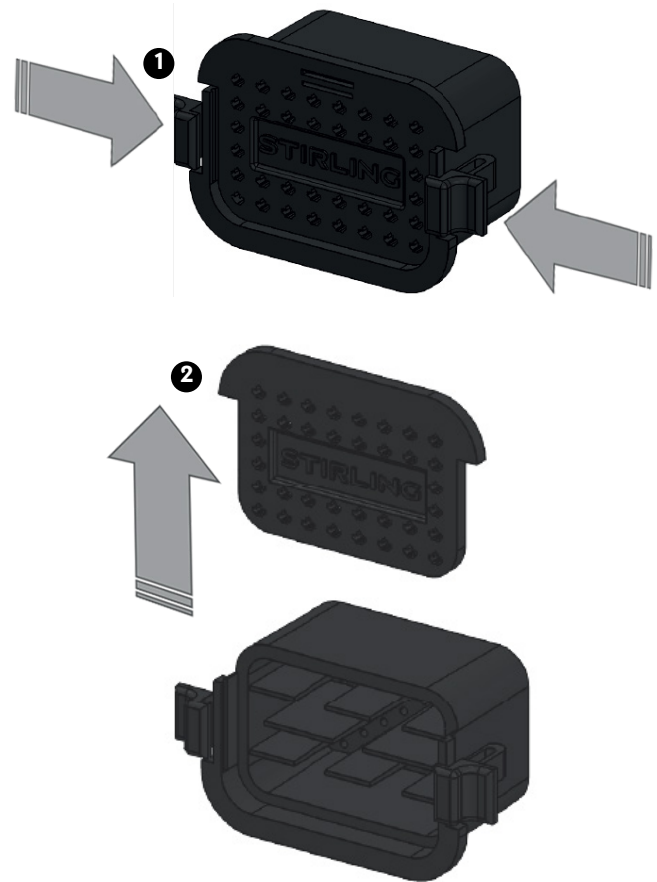
Carbon Filters Replacement

INSTRUCTIONS

To replace the filters in your Stirling Wine Cooler, begin by locating the filter in the upper right corner of the Wine Cooler. If your Wine Cooler is the Dual Zone model, there will be two filters, one in the upper right corner of each section of the fridge. If your Wine Cooler is a Single Zone model, there will only be one filter to replace.

To remove the filter, pinch in the sides and pull it out from its slot in the metal piece **1**. Once the filter has been removed from the fridge, slide up on the front face of the filter **2** to remove the cover. Then dump out the expired contents of the filter and replace it with fresh replacement filters.

To re-install the filter, slide the front face cover back into the body of the filter and reposition the filter into its original place, once the filter clicks into the back face of the Wine Cooler, you have successfully replaced your filter.



Warranty & Service

When operated and maintained according to the instructions in the Use & Care Guide, STIRLING a registered trademark of Stirling Marathon Limited agrees to repair or replace this product for 2 years from the date of original purchase and/or agrees to pay for parts and service/labour required to correct defects in materials or workmanship. Any Service must be approved and provided by an Authorized Stirling Marathon Service provider. YOUR EXCLUSIVE REMEDY UNDER THIS LIMITED WARRANTY SHALL BE PRODUCT REPAIR OR REPLACEMENT AT THE SOLE DISCRETION OF STIRLING MARATHON LIMITED AS PROVIDED HEREIN. This limited warranty is valid only with proof of original purchase and confirmed warranty registration.

Exclusions from Warranty

- No warranty or insurance herein contained or set out shall apply when damage or repair is caused by any of the following: accident, alteration, abuse or misuse of the appliance such as inadequate air circulation in the room or abnormal operating conditions (extremely high or low room temperature) or improper installation.
- Content losses due to failure of the unit.
- Service or Repair by unauthorized service technicians.
- Service calls that do not involve defects in material and workmanship such as instruction on the proper use of the product, door reversal or improper installation.
- Replacement or resetting of house fuses or circuit breakers.
- Delivery costs incurred as the result of a unit that fails.
- Expenses for travel and transportation for product service if your appliance is located in a remote area where service by an unauthorized service technician is not available.
- The removal and re-installation of your appliance if it is not installed correctly or is in an inaccessible location, as per the published installation instructions.
- Liability under this warranty is limited to repair, replacement or refund. If a replacement unit is not available or the unit cannot be repaired, liability is limited to the actual purchase price paid by the consumer.
- This warranty applies only to the original purchaser and does not extend to any subsequent owner(s) and is non-transferable.
- Use for rental, commercial or industrial purposes (i.e. If the appliance is not installed in a domestic residence). Fire, water damage, theft, war, riot, hostility, acts of God such as hurricanes, floods etc.

For service and/or assistance please contact us at:
customerservice@stirlingmarathon.com or visit us at
www.stirlingappliances.com.