

Model 700TC(I) Over-and-Under Refrigerator | Freezer



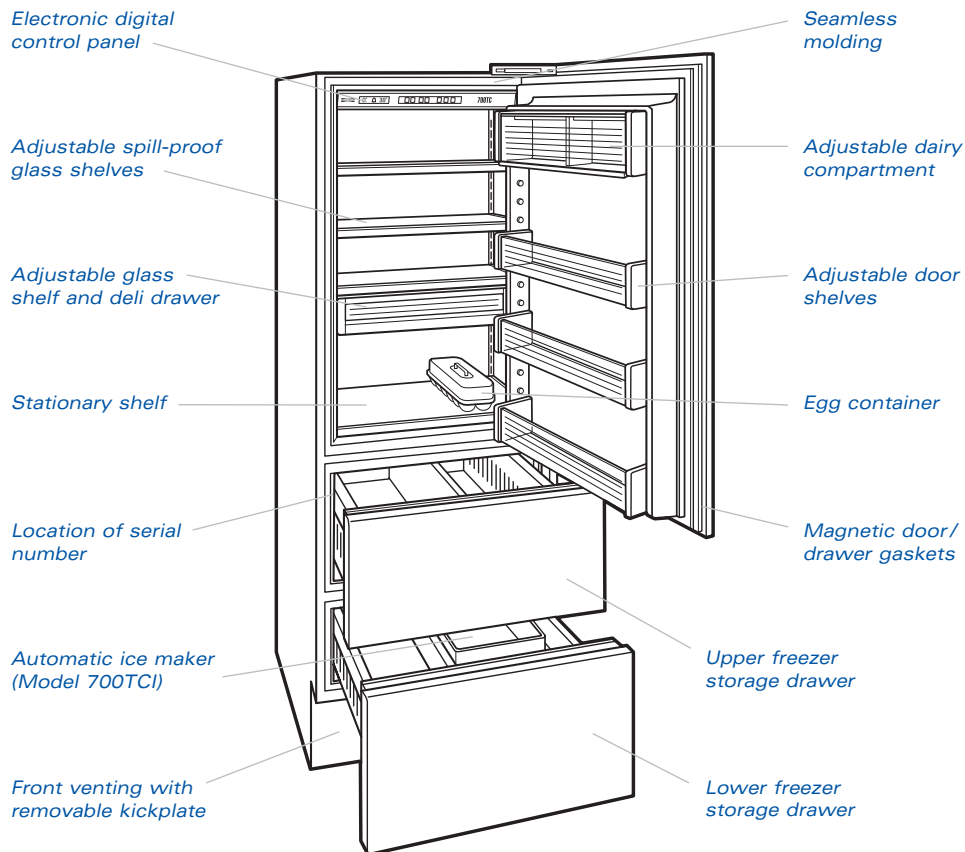
INTEGRATED



Model 700TC



Model 700TCI
with Ice Maker



With the installation of a harness kit, these appliances are Star-K compliant to meet strict religious regulations in conjunction with specific instructions found on star-k.org. You may purchase this harness kit through your Sub-Zero dealer. To obtain local dealer information, visit the Locator section of our website, subzero.com.

► The Sub-Zero Model 700TC and 700TCI integrated design accepts custom wood or stainless steel door and drawer panels. Stainless steel panels and handles are available as sales accessories in three finishes—classic, platinum and carbon.

For those very small galley kitchens where you cannot fit a full size Built-In unit, I would beg anyone to say they do not have room for this delightful combination model. The refrigerator door space gives you 10.2 cu ft (289 L) of storage with a temperature range of 34°F (1°C) to 45°F (7°C), while the two freezer drawers give you 5.1 cu ft (144 L) of storage in an environment where the temperature can be set between -5°F (-20°C) and +5°F (-15°C).

You also have the option of ordering this model with or without an ice maker.

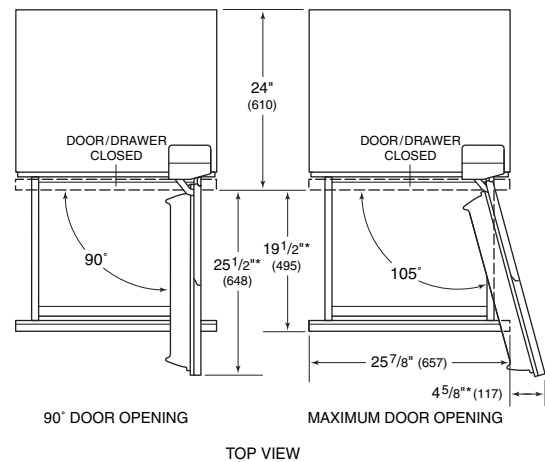
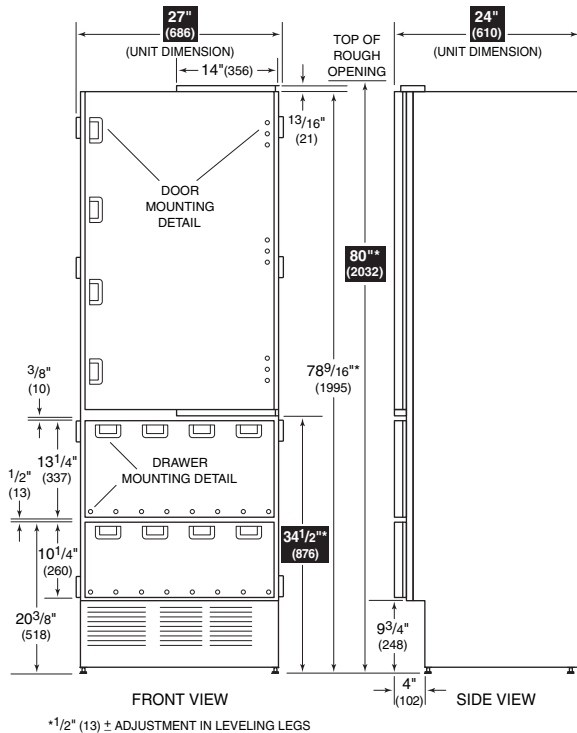
You must specify the door swing when placing an order.

Model 700TC(I)

FEATURES

- ▶ Tall combination unit with upper cabinet refrigerator and freezer storage drawers
- ▶ Model 700TCI has automatic ice maker
- ▶ Integrated design for "point-of-use" refrigeration anywhere in the home
- ▶ Dual refrigeration system with two distinct temperature zones ensures the freshest food and energy efficiency
- ▶ Electronic digital controls are up front and easy to use
- ▶ Flat to the ceiling bright lighting in cabinet and drawers
- ▶ Door alarm will let you know with an audible beeping if a door or drawer is left open
- ▶ Adjustable spill-proof glass shelves
- ▶ Refrigerator deli drawer for storage of smaller items
- ▶ The exclusive dual action hinge has a built-in 90° door stop
- ▶ Meets strict Department of Energy requirements
- ▶ UL approved for US and Canada
- ▶ Two, five and twelve year residential warranty – exclusions apply; warranty information can be found on our website, subzero.com

OVERALL DIMENSIONS



*DOOR/DRAWER PANEL THICKNESS NOT INCLUDED – DIMENSION WILL VARY WITH INSTALLATION

Dimensions may vary by ±1/8" (3).

Dimensions in parentheses are in millimeters unless otherwise specified.



Model 700TC(I)



INTEGRATED

MODEL OPTIONS ▼

Over-and-Under Refrigerator/Freezer	700TC
Over-and-Under Refrigerator/Freezer with Automatic Ice Maker	700TCI

PANEL OPTIONS ▼

Integrated (custom panels)	
Classic Stainless Steel Finish	/S
Platinum Stainless Steel Finish	/P
Carbon Stainless Steel Finish	/B

Stainless steel door and drawer front panels are ordered and shipped as sales accessories and include tubular handles.

ACCESSORIES

- ▶ Tubular handles in classic, platinum and carbon stainless steel
- ▶ Shelf and crisper assembly
- ▶ Dozen egg container with lid
- ▶ Dual installation heater kit (TTDUAL or BBDUAL)

Accessories are available through your Sub-Zero dealer. To obtain local dealer information, visit the Locator section of our website, subzero.com.

SPECIFICATIONS ▼

Model 700TC(I)	Over-and-Under Refrigerator/Freezer
Overall Width	27" (686)
Overall Height	80" (2032)
Overall Depth	24" (610)
Refrigerator Capacity	10.2 cu ft (289 L)
Freezer Capacity	5.1 cu ft (144 L)
Minimum Height (levelers in)	79 1/2" (2019)
Door Clearance	25 1/2" (648)
Drawer Clearance	19 1/2" (495)
Electrical Requirements	115 V AC, 60 Hz, 15 amp circuit
Plumbing Requirements	1/4" copper line
Water Supply	20–100 psi
Annual Energy Usage	540 kWh / \$45
Shipping Weight	360 lbs (163 kg)
Special Note	Door and drawer panels and handles are available in three stainless steel finishes

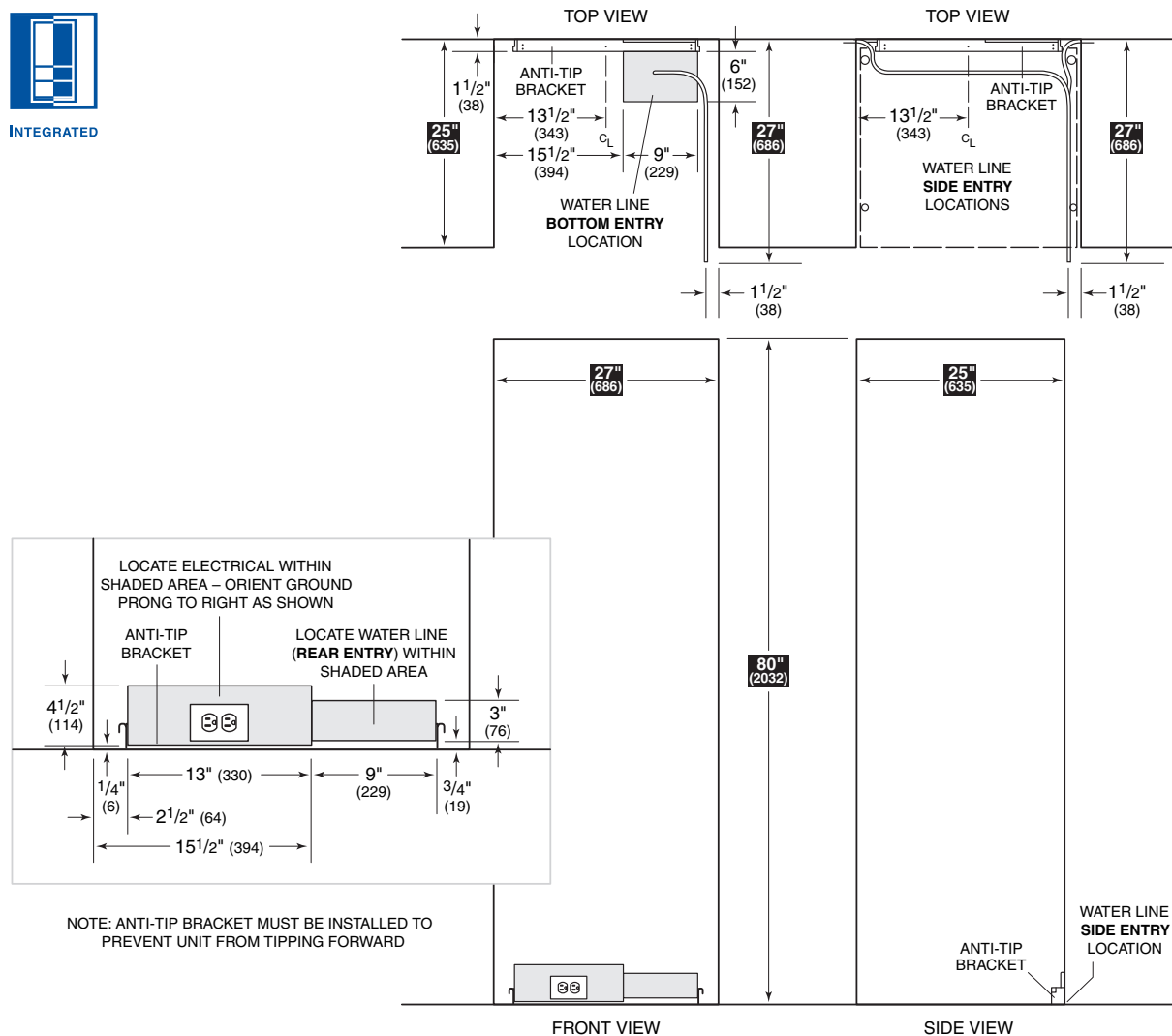
Specifications are subject to change without notice.

Model 700TC(I)

INSTALLATION SPECIFICATIONS



INTEGRATED



Dimensions may vary by $\pm 1/8"$ (3).

DIMENSIONS

Finished Rough Opening Width	27" (686)
Finished Rough Opening Height	80" (2032)
Finished Rough Opening Depth	25" (635)*
Location of Electrical	Within shaded area
Location of Plumbing (Model 700TCI only)	Within shaded area

*The depth of the Model 700TC(I) is 24" (610) from the front of the unit to its back. Your design may necessitate moving the unit back, or cabinets forward to achieve a flush fit. This will require a minimum rough opening depth of 25" (635).

See Installation Instructions shipped with unit for detailed specifications.

Dimensions in parentheses are in millimeters unless otherwise specified.



Model 700TC(I)

INSTALLATION NOTES

- ▶ Refer to the illustrations and specifications for overall dimensions, finished rough opening dimensions and installation specifics.
- ▶ **The depth of Model 700TC(I) is 24" (610) from the front of the unit to its back. Your design may necessitate moving the unit back, or cabinets forward to achieve a flush fit. This will require a minimum rough opening depth of 25" (635). Refer to the installation illustration.**
- ▶ The anti-tip bracket must be installed to prevent the unit from tipping forward.
- ▶ Integrated units are compatible with virtually any style of cabinetry. They can be used with framed as well as frameless cabinets.
- ▶ Refer to the full-scale illustrations at the end of this section for specifics on panels and door openings.
- ▶ Door panels can grow beyond the 80" (2032) height to accommodate any size of door as long as you stay below the recommended door panel weight limit of 40 lbs (18 kg). Door panels must be a minimum of $\frac{5}{8}$ " (16) thick.
- ▶ The weight of each drawer panel cannot exceed 12 lbs (5 kg). Drawer panels must be a minimum of $\frac{5}{8}$ " (16) thick.
- ▶ For the bottom drawer, the maximum panel height is $16\frac{11}{16}$ " (424). You must keep a minimum space of 4" (102) clear below the bottom edge of the lower drawer panel, so the unit can be properly vented. In addition, any decorative base molding must be removable for possible servicing and cleaning of the condenser.
- ▶ We recommend using D-style handles, which should be located on the opposite side from the hinge, centered on the cabinet door and the top, center area of the drawer panel.
- ▶ Two Integrated units may be installed next to one another. Refer to page 11 for additional information.
- ▶ For Integrated models with an automatic ice maker, rough in the water supply line. Connect a $\frac{1}{4}$ " OD copper line to the house supply, being sure to use an easily accessible shut-off valve between the supply and the unit. This shut-off valve should not be installed behind the unit.
- ▶ Do not use self-piercing valves. A saddle valve kit (4200880) is available from your Sub-Zero dealer. To obtain local dealer information, visit the Locator section of our website, subzero.com.
- ▶ A line filter is required when water conditions have a high sediment content. The ice maker operates on water pressure of 20 psi (1.4 bar) to 100 psi (6.9 bar). In some cases a reverse osmosis water filter system may not be able to maintain the minimum water pressure consistently.
- ▶ When routing the water through the side walls, you must place the water line within $\frac{1}{2}$ " (13) of the floor and as close as possible to the back wall. The line must be routed around the anti-tip bracket so it clears the bracket and leveling feet of the unit. Refer to the installation illustration for placement of the water line.
- ▶ Do not route water supply line in front of the compressor tray. The tray must be slid forward for service.
- ▶ Regardless of the routing, allow for 27" (686) of excess copper tubing to remain outside the wall or floor for easy connection to the unit, as shown in the installation illustration.
- ▶ A 115 volt, 60Hz, 15 amp circuit breaker and electrical supply are required. A separate circuit, servicing only this appliance is necessary.
- ▶ All Integrated models are equipped with a power supply cord with a 3-prong grounding plug, which must be plugged into a mating 3-prong grounding type wall receptacle. The electrical outlet must be placed so the grounding prong is to the right of the thinner blades. The outlet must be flush with the back wall. Locate electrical within the shaded area shown in the installation illustration.
- ▶ Do not use an extension cord or two prong adapter. Electrical ground is required.
- ▶ You must follow all National Electrical Code regulations. In addition, be aware of local codes and ordinances when installing your service.
- ▶ The Integrated Installation Guide packed with the appliance will give you step-by-step procedures for making sure the unit is installed properly.

Model 700TC(I) INTEGRATING CABINETRY



INTEGRATED

CABINETRY APPLICATIONS

Integrated refrigeration is compatible with virtually any style and look of cabinetry. The models can be used with framed as well as frameless cabinets. Because of the precise application and the look you may want to achieve, there are important questions you need to answer before ordering panels for the doors and/or drawers. As you look at styles of cabinets, keep some important facts in mind:

Weight Limitations – The door panel cannot exceed 40 lbs (18 kg) and each drawer panel must not exceed 12 lbs (5 kg).

Panel Thickness – Door and drawer panels must be a minimum of $\frac{5}{8}$ " (16) thick.

The height of the door panel can grow beyond 45 $\frac{3}{8}$ " (1153) and exceed the 80" (2032) overall height as long as you stay below the recommended door panel weight limit.

The toe kick clearance can vary with the height of the lower drawer panel; the maximum panel height is 16 $\frac{11}{16}$ " (424). You must keep a minimum space of 4" (102) clear below the bottom edge of the lower drawer panel so the unit can be properly vented.

We recommend using D-style handles. For the cabinet door, handles must be located near the edge of the panel opposite the hinge, centered top to bottom. Locate handles in the top center area of the drawer panels.

IMPORTANT NOTE: The depth of each Integrated unit is 24" (610) from the front of the unit to its back. You **must** allow for the thickness of the panel you are applying when planning for the finished rough opening depth if you want the front panel to be flush with surrounding cabinetry. You may have to move the unit back into drywall or bring the cabinets forward to achieve a flush fit.

⚠ CAUTION

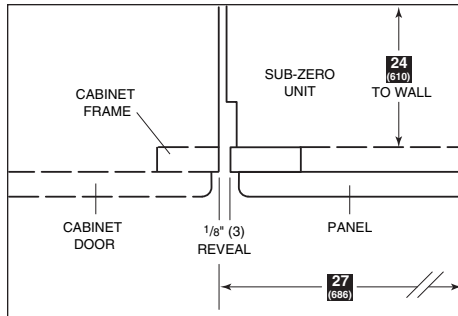
As the reveal between cabinets and the Integrated unit decreases, the potential exists for severe finger pinching or crushing if a hand or fingers are placed in the opening when the door is closing.

Model 700TC(I) INTEGRATING CABINETRY

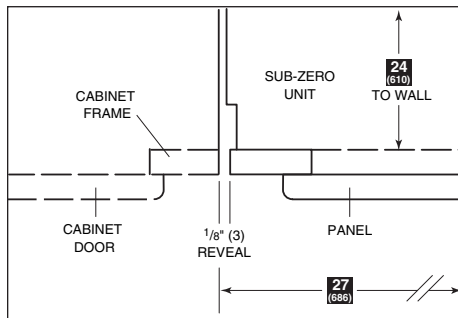


INTEGRATED

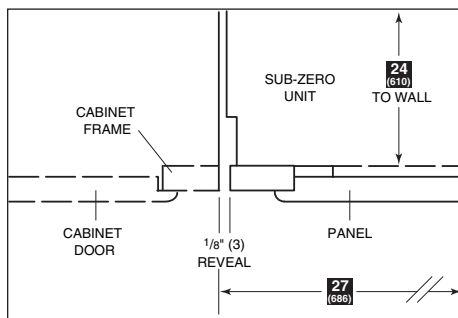
FRAMED CABINETRY ▼



► Traditional Frame – full overlay.



► Traditional Frame – standard overlay.



► Traditional Frame – $\frac{3}{8}$ " (10) offset.

FRAMED CABINETRY APPLICATIONS

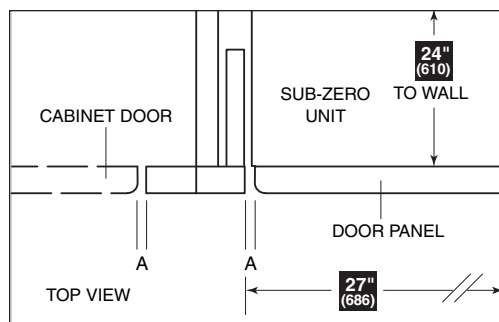
Framed cabinetry applications present you with different questions to address. The illustrations on this page show common applications of framed cabinetry. These are not meant to be the only alternatives, but are suggestions from designers around the country. Also refer to the full-scale illustrations at the end of this section for specifics on door openings.

IMPORTANT NOTE: The depth of each Integrated unit is 24" (610) from the front of the unit to its back. You **must** allow for the thickness of the panel you are applying when planning for the finished rough opening depth if you want the front panel to be flush with surrounding cabinetry. You may have to move the unit back into drywall or bring the cabinets forward to achieve a flush fit. Refer to the illustrations.

Illustrations on the following pages give dimensions for an Integrated base or tall unit installed within a framed cabinetry beaded inset application. Review the illustrations, giving particular attention to the overall panel specifications. Also refer to the full-scale illustrations at the end of this section for specifics on door openings.

Model 700TC(I)

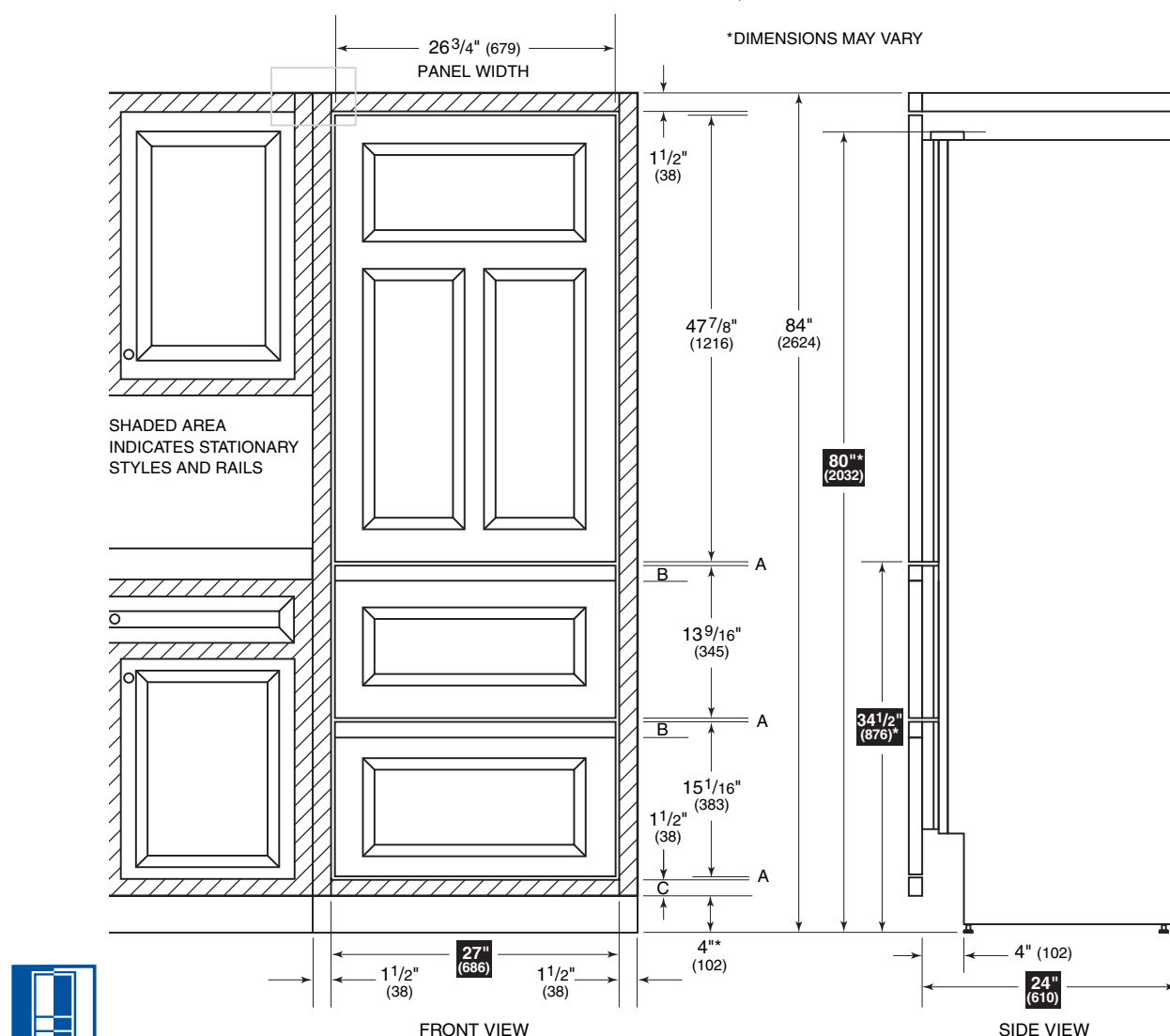
FRAMED CABINETRY - BEADED INSET APPLICATION



The illustration shows an Integrated tall unit installed within a framed cabinetry beaded inset application.

IMPORTANT NOTE: Dimensions are based on a 1/8" (3) reveal. A reveal of up to 1/4" (6) is possible, but panel dimensions need to be adjusted accordingly.

- A) ALL REVEALS ARE 1/8" (3)
- B) DRAWER RAILS ARE ATTACHED TO DRAWER FRONTS
- C) BOTTOM RAIL MUST BE REMOVABLE



INTEGRATED

Installation of an Integrated tall unit within framed cabinetry.

**Dimensions may vary.*

Dimensions in parentheses are in millimeters unless otherwise specified.

Model 700TC(I)



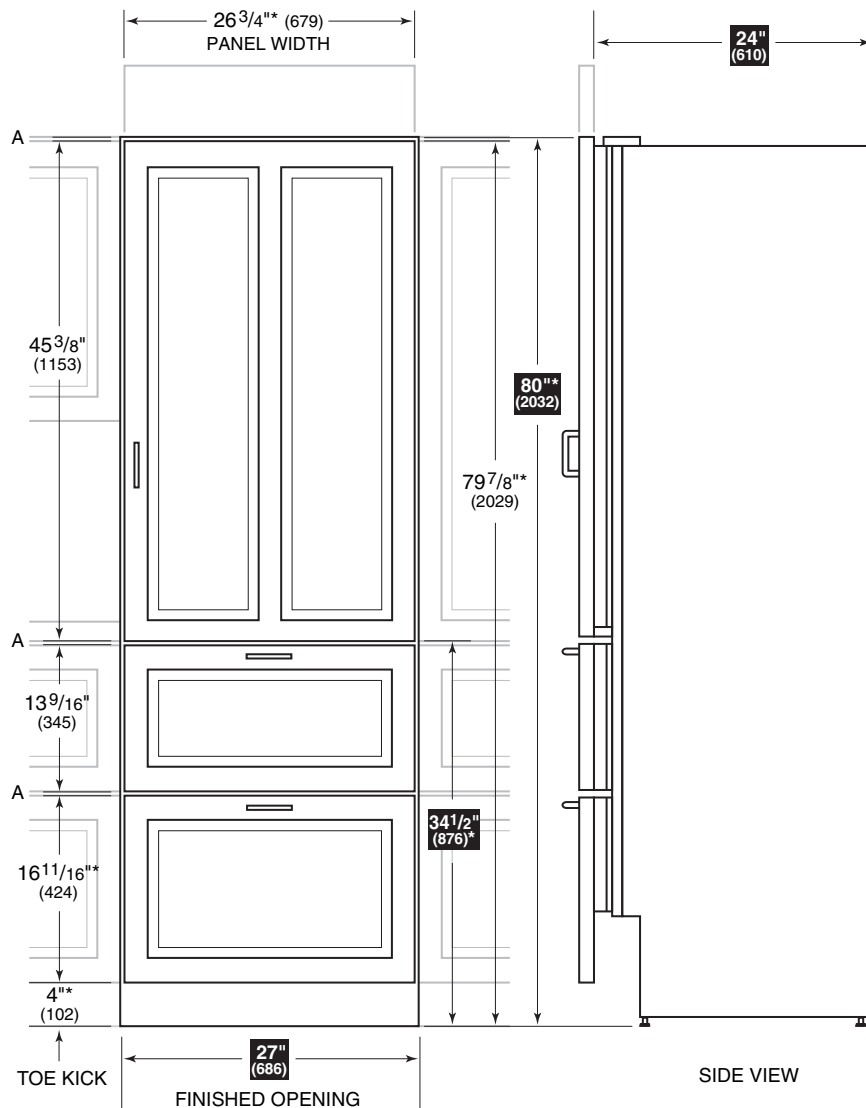
INTEGRATED

FRAMELESS CABINETRY APPLICATIONS

The illustration below shows a hypothetical installation of an Integrated tall unit within frameless cabinetry. Review the illustration, giving particular attention to the overall panel specifications. Also refer to the full-scale illustrations at the end of this section for specifics on door openings.

IMPORTANT NOTE: Dimensions are based on a $\frac{1}{8}$ " (3) reveal. A reveal of up to $\frac{1}{4}$ " (6) is possible, but panel dimensions need to be adjusted accordingly.

FRAMELESS CABINETRY ▼



A) ALL REVEALS ARE $\frac{1}{8}$ " (3)

*DIMENSIONS MAY VARY

Installation of an Integrated tall unit within frameless cabinetry.

**Dimensions may vary.*

Dimensions in parentheses are in millimeters unless otherwise specified.

Model 700TC(I)

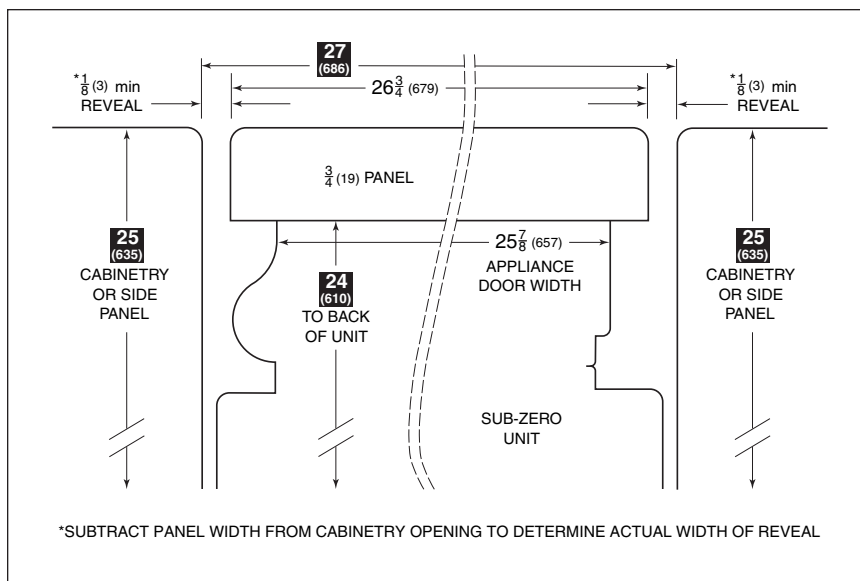
PANEL CONSIDERATIONS

The illustrations below provide panel width dimensions for installation of a single tall unit and for installing two tall units side by side.

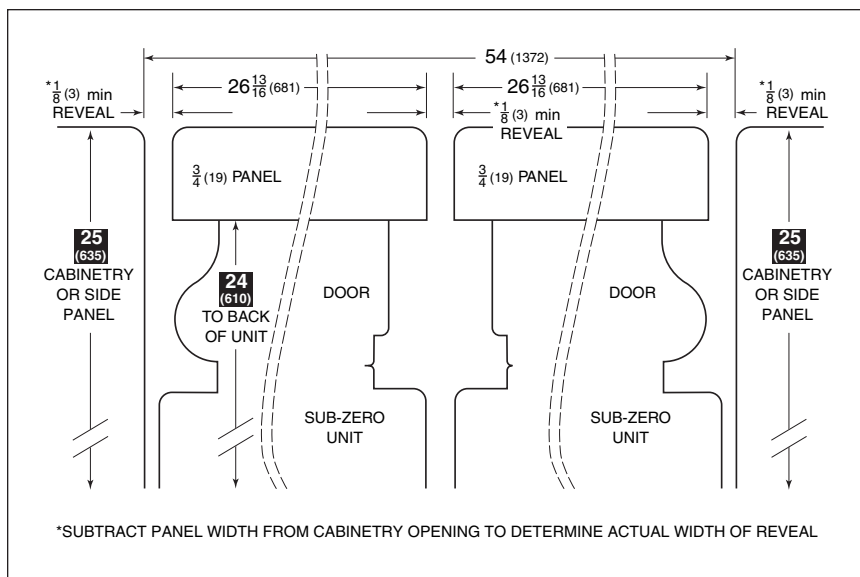
IMPORTANT NOTE: Dimensions are based on a $\frac{1}{8}$ " (3) reveal. A reveal of up to $\frac{1}{4}$ " (6) is possible, but panel dimensions need to be adjusted accordingly.

⚠ CAUTION

When $\frac{5}{8}$ " (16) or thicker panels are used and a reveal less than $\frac{1}{4}$ " (6) is maintained, the door panels may cause damage to the Sub-Zero unit when the door is open at the maximum 105° door stop. You should use the built-in 90° door stop to prevent damage.

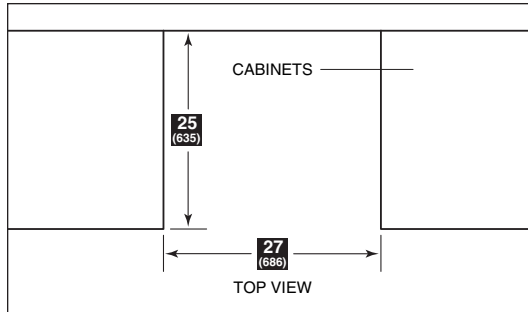


Panel width dimensions for installation of a single tall unit.

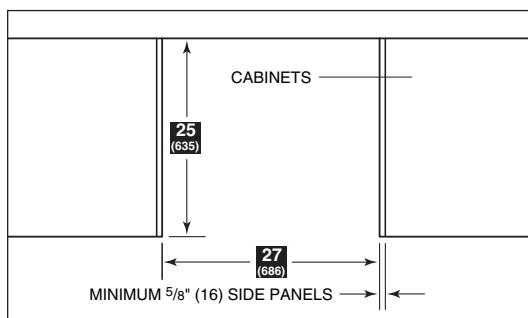


Panel width dimensions for installation of two tall units side by side.

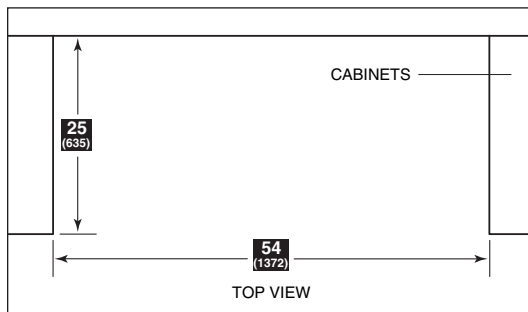
Model 700TC(I)



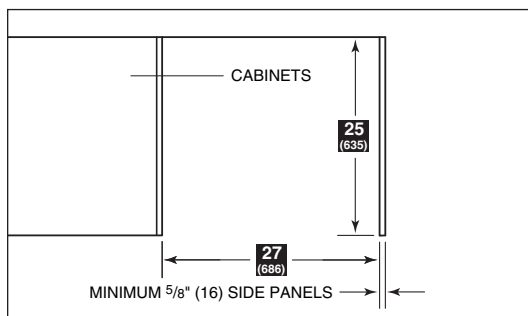
- Installation without side panels.



- Installation with side panels.



- Installation of two units side by side.



- Installation at end of run.



INSTALLATION OPTIONS

The illustrations on this page show some typical installations and their dimension considerations. The depth dimension in the illustrations may vary depending on cabinet styles, treatment of counter-tops or other design options.

IMPORTANT NOTE: The depth of each Integrated model is 24" (610) from the front of the unit to its back. Your design may necessitate moving the unit back, or cabinets forward to achieve a flush fit. This will require a minimum rough opening depth of 25" (635). Refer to the illustrations.

DUAL INSTALLATIONS

If two or more Integrated models are installed side by side where there is 2" (51) or less of space between the units, a heater kit is recommended—TTDUAL for two tall units installed side by side and BBDUAL for two base units or a base unit and a tall unit installed side by side. These optional components are available through your Sub-Zero dealer. To obtain local dealer information, visit the Locator section of our website, subzero.com.

Model 700TC(I)



INTEGRATED

DOOR PANEL HEIGHT

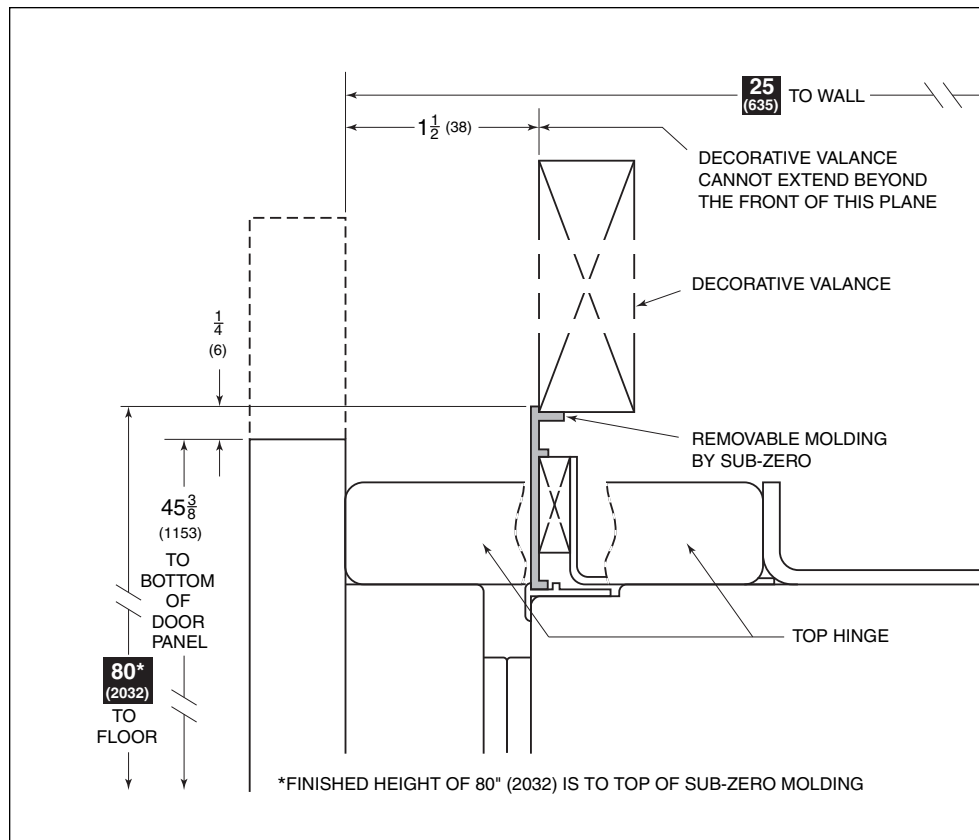
The height of the door panel can grow beyond $45\frac{3}{8}$ " (1153) and exceed the 80" (2032) overall height, as long as you stay below the recommended door panel weight limit of 40 lbs (18 kg) for 27" (688) wide units and 53 lbs (24 kg) for the Model 736TC(I).

The illustration below shows how the panel may grow and what you need to consider doing to finish the area in back of the door panel.

IMPORTANT NOTE: The valance you use to finish the area behind the door panel must stay behind the front plane of the finished molding as shown in the illustration.

IMPORTANT NOTE: The depth of each Integrated unit is 24" (610) from the front of the unit to its back. Your design may necessitate moving the unit back, or cabinets forward to achieve a flush fit. This will require a minimum rough opening depth of 25" (635). Refer to the illustration.

UPPER VALENCE DETAIL ▼



Model 700TC(I)



INTEGRATED

TOE KICK CLEARANCE

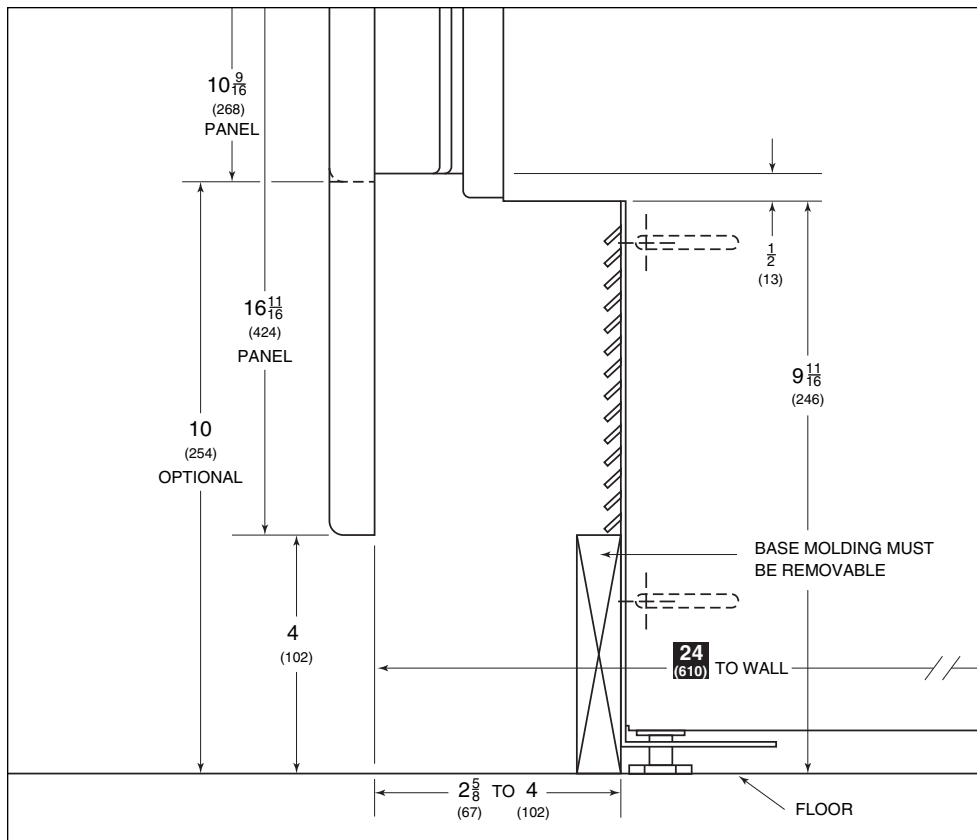
The toe kick clearance can vary with the height of the lower drawer panel; the maximum panel height is $16\frac{11}{16}$ " (424).

IMPORTANT NOTE: You must keep a minimum space of 4" (102) clear below the bottom edge of the lower drawer panel so the unit can be properly vented. In addition, any decorative base molding must be removable for possible servicing and cleaning of the condenser.

The illustration below shows the area below the lower drawer where the operating mechanical equipment of the Integrated unit is housed.

IMPORTANT NOTE: The depth of each Integrated unit is 24" (610) from the front of the unit to its back. Your design may necessitate moving the unit back, or cabinets forward to achieve a flush fit. This will require a minimum rough opening depth of 25" (635). Refer to the illustration.

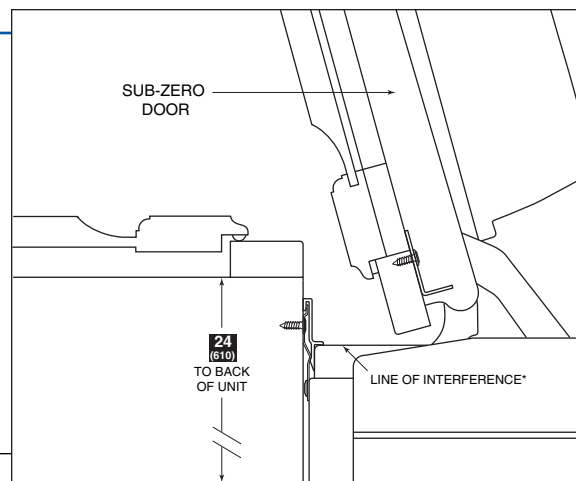
TOE KICK AREA DETAIL ▼



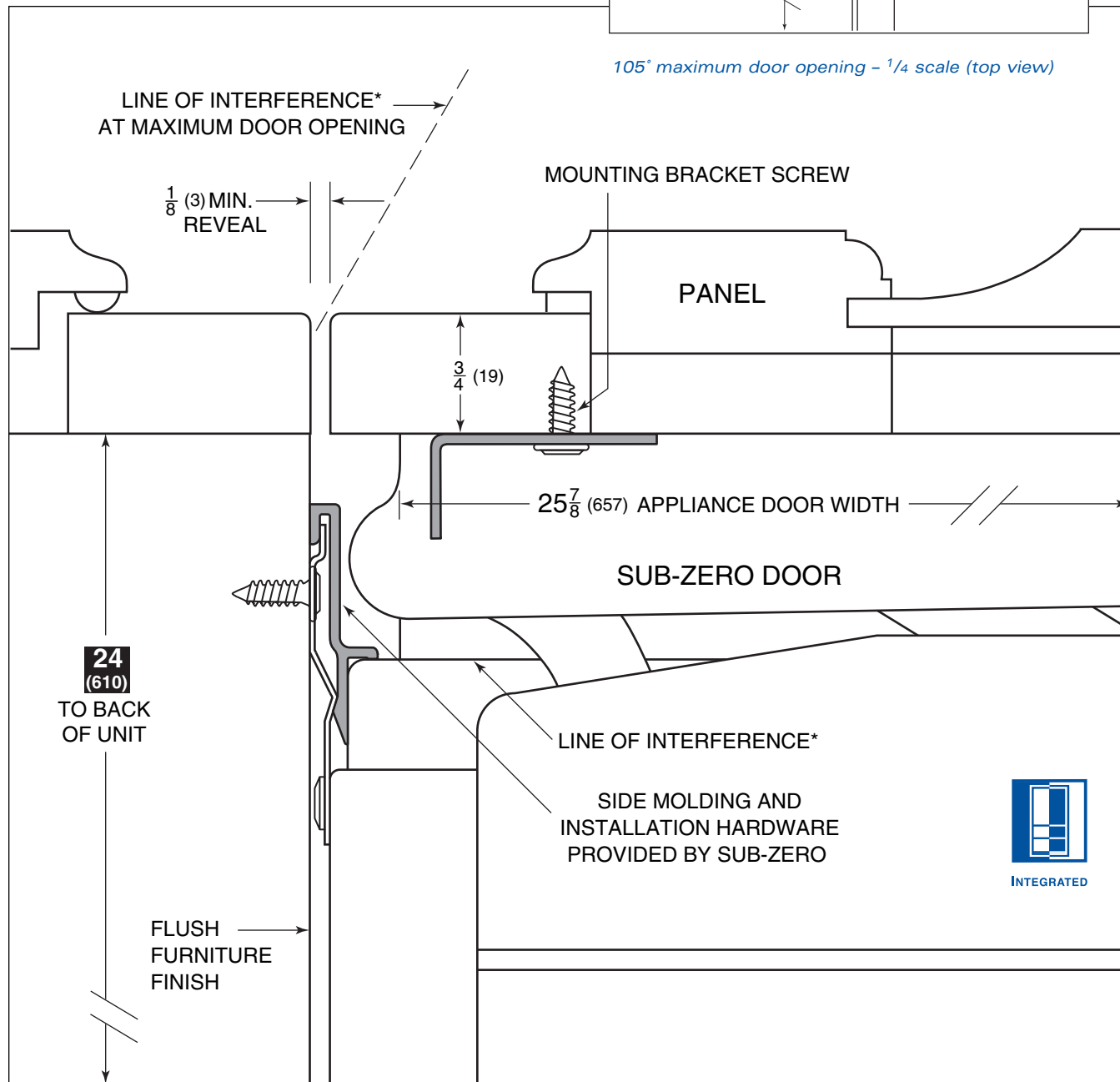
Model 700TC(I) FULL-SCALE TEMPLATE

FRAMED CABINETRY

IMPORTANT NOTE: The depth of each Integrated unit is 24" (610) from the front of the unit to its back. Your design may necessitate moving the unit back, or cabinets forward to achieve a flush fit.



105° maximum door opening – 1/4 scale (top view)



INTEGRATED

Door closed – full scale (top view)

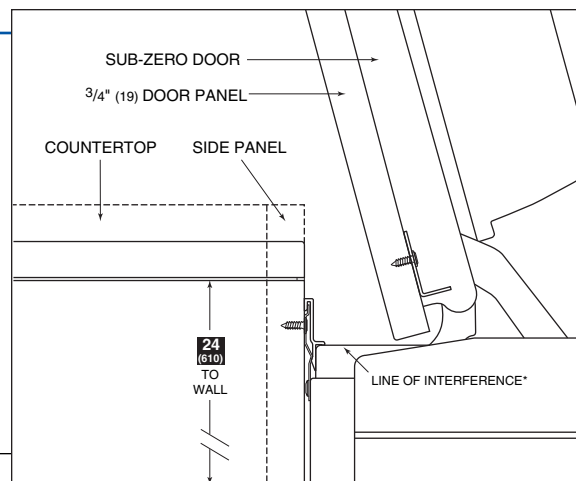
*If the panel is thicker than $\frac{3}{4}$ " (19), it is recommended that you utilize the built-in 90° door stop to prevent damage to the panel and face frame.

Dimensions in parentheses are in millimeters unless otherwise specified.

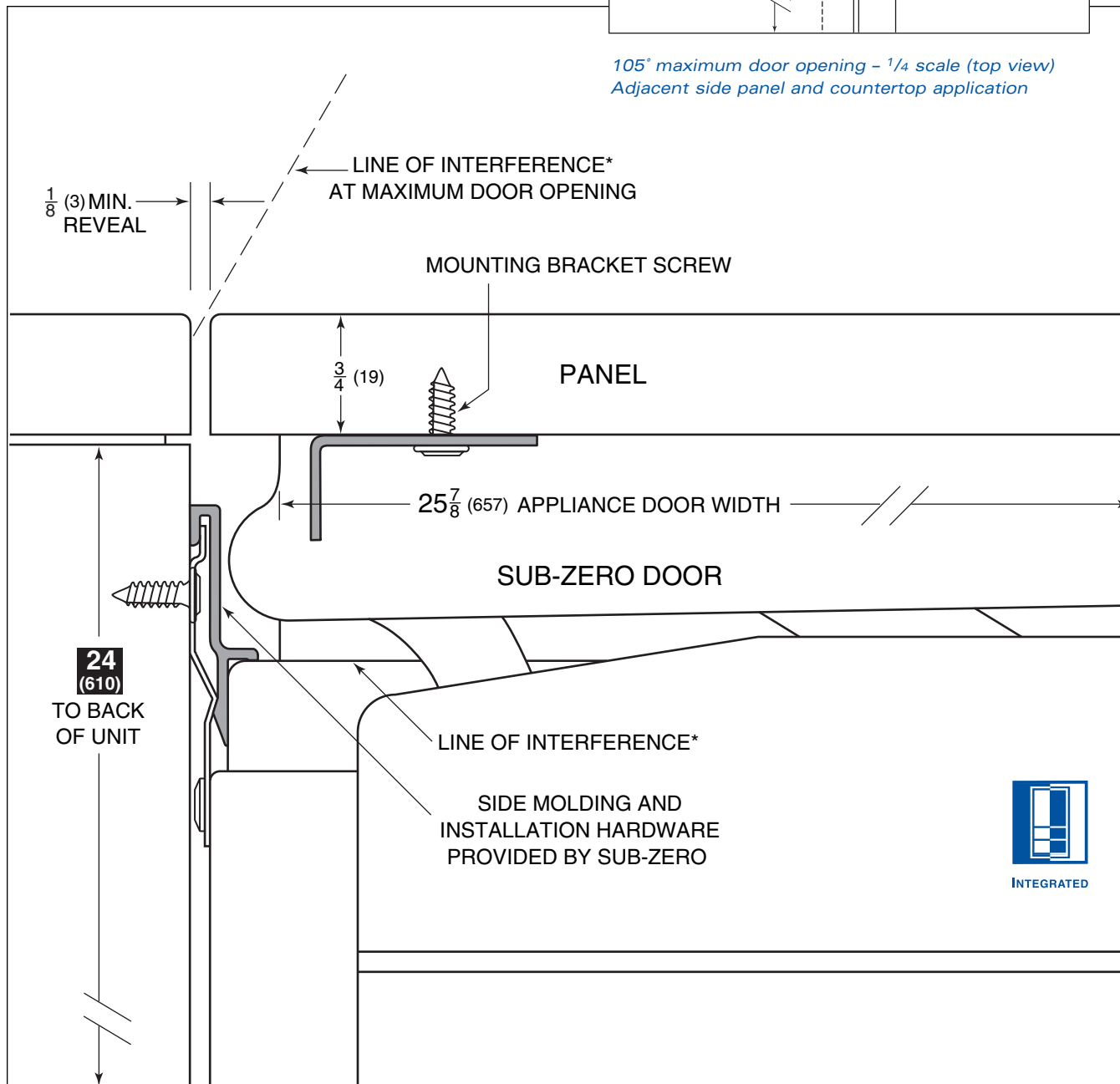
Model 700TC(I) FULL-SCALE TEMPLATE

FRAMELESS CABINETRY

IMPORTANT NOTE: The depth of each Integrated unit is 24" (610) from the front of the unit to its back. Your design may necessitate moving the unit back, or cabinets forward to achieve a flush fit.



*105° maximum door opening – 1/4 scale (top view)
Adjacent side panel and countertop application*



Door closed – full scale (top view)

**If the panel is thicker than 3/4" (19), it is recommended that you utilize the built-in 90° door stop to prevent damage to the panel and face frame.*

Dimensions in parentheses are in millimeters unless otherwise specified.



INTEGRATED