

DIN-EN-2X18

Enclosure for DIN Rail Devices, 2 DIN Rails, 18 Units Wide

The DIN-EN Series of metal panels are designed to house up to 18 DIN rail devices per panel.[1] Each enclosure is available in three sizes to accommodate two, three, or six DIN rails. It also includes a removable front cover for easy access to the equipment. A DIN-EN Series panel is the perfect enclosure for Crestron DIN rail products such as the **DIN-AP3**, **DIN-DALI-2**, and **DIN-1DIMU4**. Third-party DIN rail devices are also suitable for mounting in this panel.

DIN-EN-MM Two-Stage Installation models afford peace-of-mind. In two-stage installations, the rough-in enclosure is ordered and installed months in advance of the lay-in panel, allowing time for prewiring and rough-in work. The lay-in panel is ordered separately and delivered with all of the equipment it houses already in place. Simply lay the panel in to the previously installed enclosure to complete the installation. This installation method ensures that delicate equipment is not disturbed or damaged during construction and pre-wiring.

SPECIFICATIONS

DIN Rail Detail

DIN-EN-2X18: (2) 342 mm x 35 mm rails [2]
DIN-EN-3X18 &
DIN-EN-3X18-MMP: (3) 342 mm x 35 mm rails [2]
DIN-EN-6X18 &
DIN-EN-6X18-MMP: (6) 342 mm x 35 mm rails [2]

Environmental

Temperature: 32° to 104° F (0° to 40° C)
Humidity: 10% to 90% RH (non-condensing)



DIN-EN-2X18 shown

DIN-EN-3X18-MMOE: **Height:** 23.50 in (597 mm)

Width: 14.38 in (366 mm)

Depth:

DIN-EN-6X18 &

DIN-EN-6X18-MMOE: **Height:** 38.88 in (989 mm)

Width: 14.38 in (366 mm)

Depth:

Weight

DIN-EN-2X18: 11.4 lbs (5.17 kg)

DIN-EN-3X18: 20.3 lbs (9.18 kg)

DIN-EN-3X18-MMOE: 19.0 lbs (8.61 kg)

DIN-EN-3X18-MMP: 6.0 lbs (2.72 kg)

DIN-EN-6X18: 30.5 lbs (13.83 kg)

DIN-EN-6X18-MMOE: 28.0 lbs (12.68 kg)

DIN-EN-6X18-MMP: 10.5 lbs (4.76 kg)

Certifications and Regulatory Compliance

UL Listed

Notes:

1. One DIN unit = 18 mm.
2. Designed to accommodate 18 DIN units while leaving 1 DIN unit (18 mm) of extra space.

DIN-EN-2X18

Enclosure for DIN Rail Devices, 2 DIN Rails, 18 Units Wide

This product may be purchased from an authorized Crestron dealer. To find a dealer, please contact the Crestron sales representative for your area. A list of sales representatives is available online at www.crestron.com/salesreps or by calling 800-237-2041.

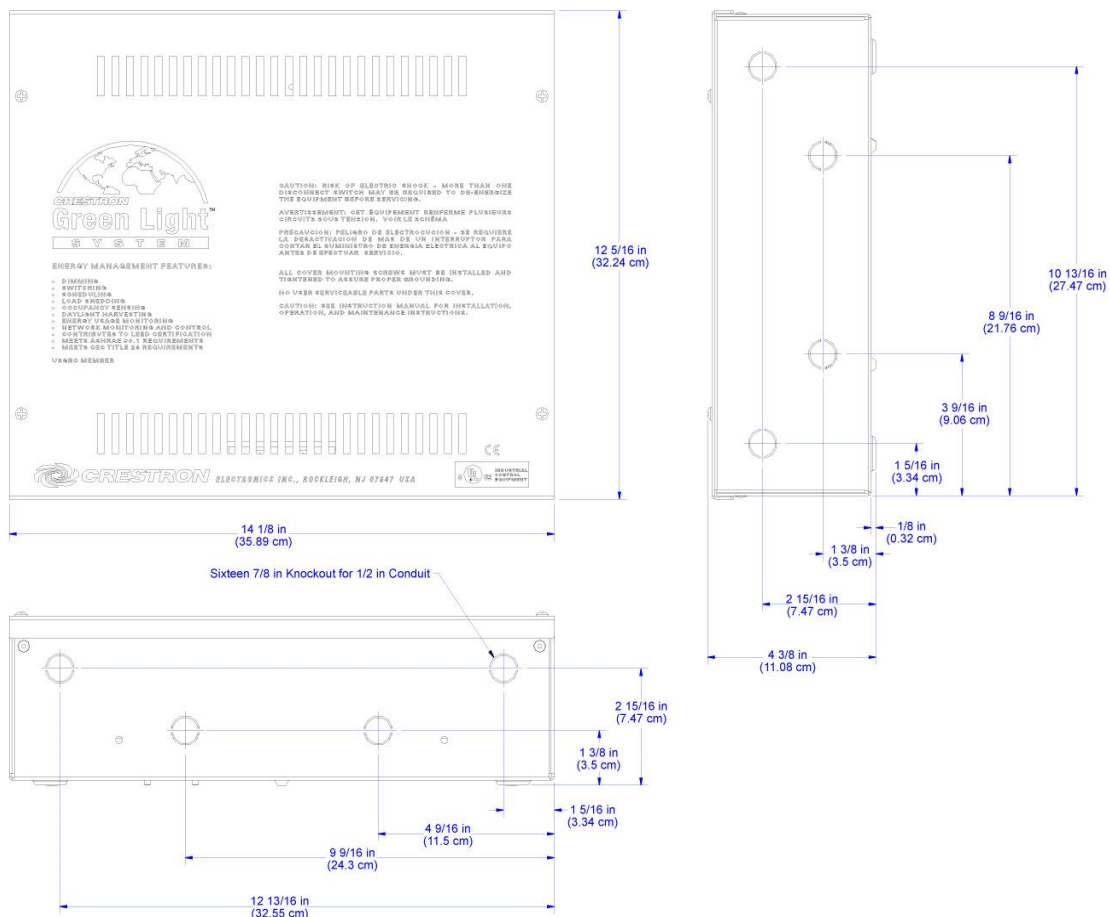
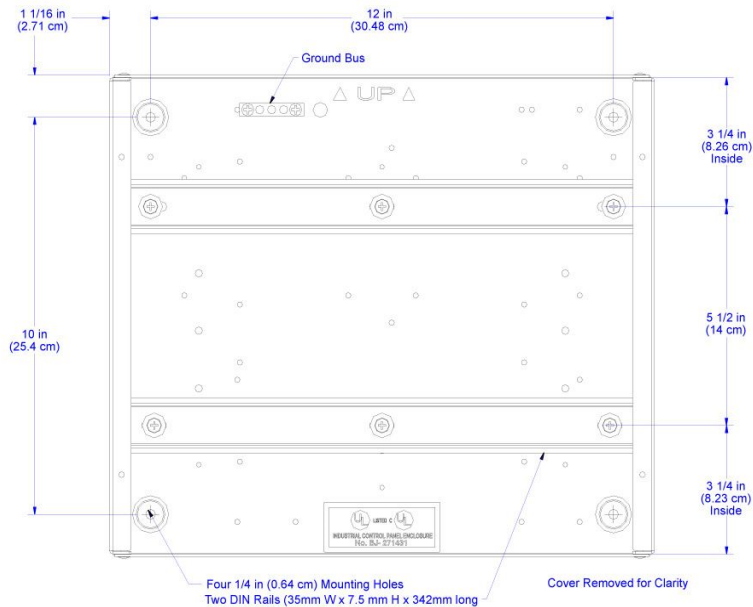
The specific patents that cover Crestron products are listed online at: patents.crestron.com.

Certain Crestron products contain open source software. For specific information, visit www.crestron.com/opensource.

Crestron and the Crestron logo are either trademarks or registered trademarks of Crestron Electronics, Inc. in the United States and/or other countries. Other trademarks, registered trademarks, and trade names may be used in this document to refer to either the entities claiming the marks and names or their products. Crestron disclaims any proprietary interest in the marks and names of others. Crestron is not responsible for errors in typography or photography. Specifications are subject to change without notice. ©2015 Crestron Electronics, Inc.

DIN-EN-2X18

Enclosure for DIN Rail Devices, 2 DIN Rails, 18 Units Wide



Enclosure for DIN Rail Devices, 2 DIN Rails, 18 Units Wide

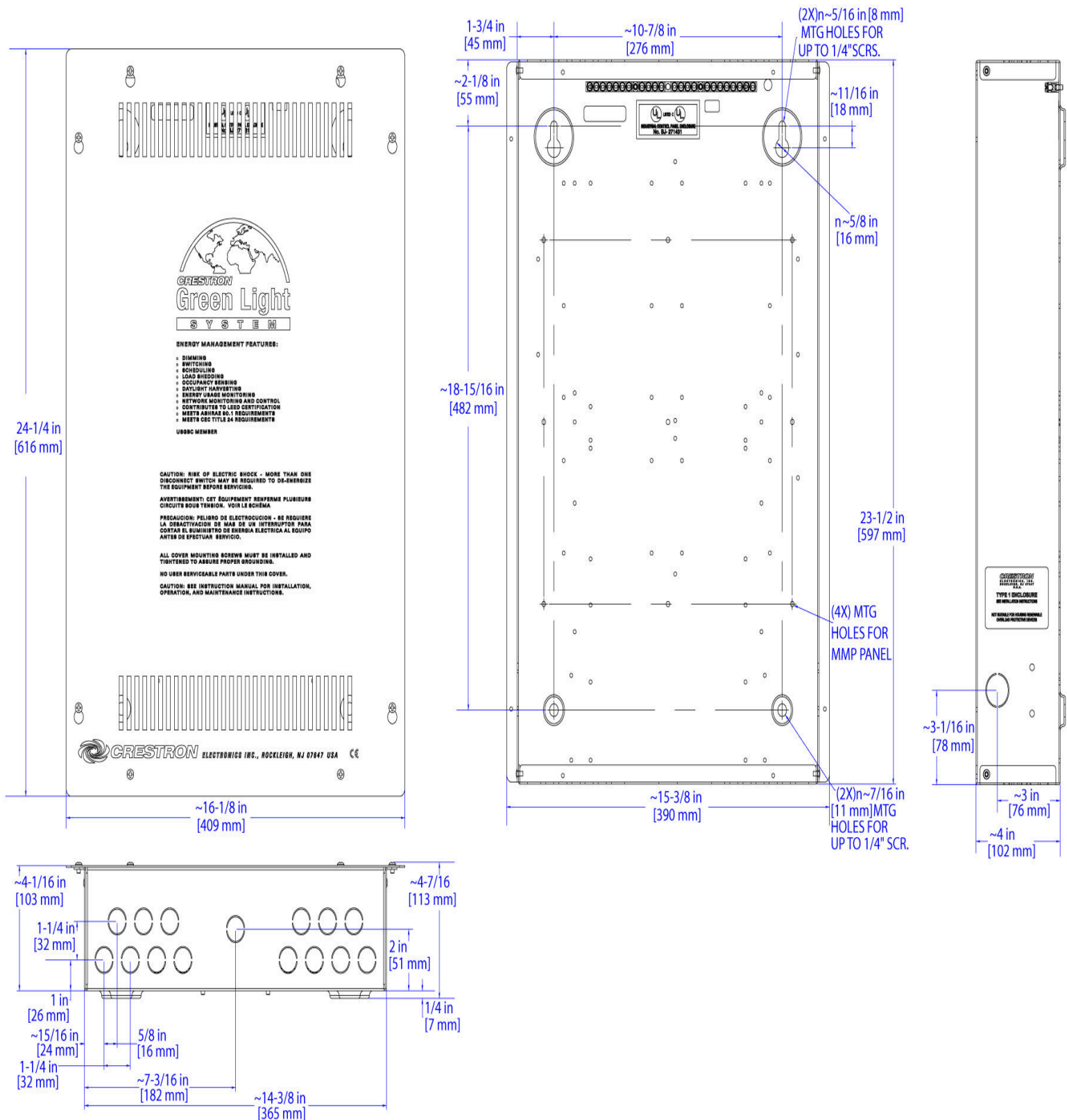


Enclosure for DIN Rail Devices, 2 DIN Rails, 18 Units Wide



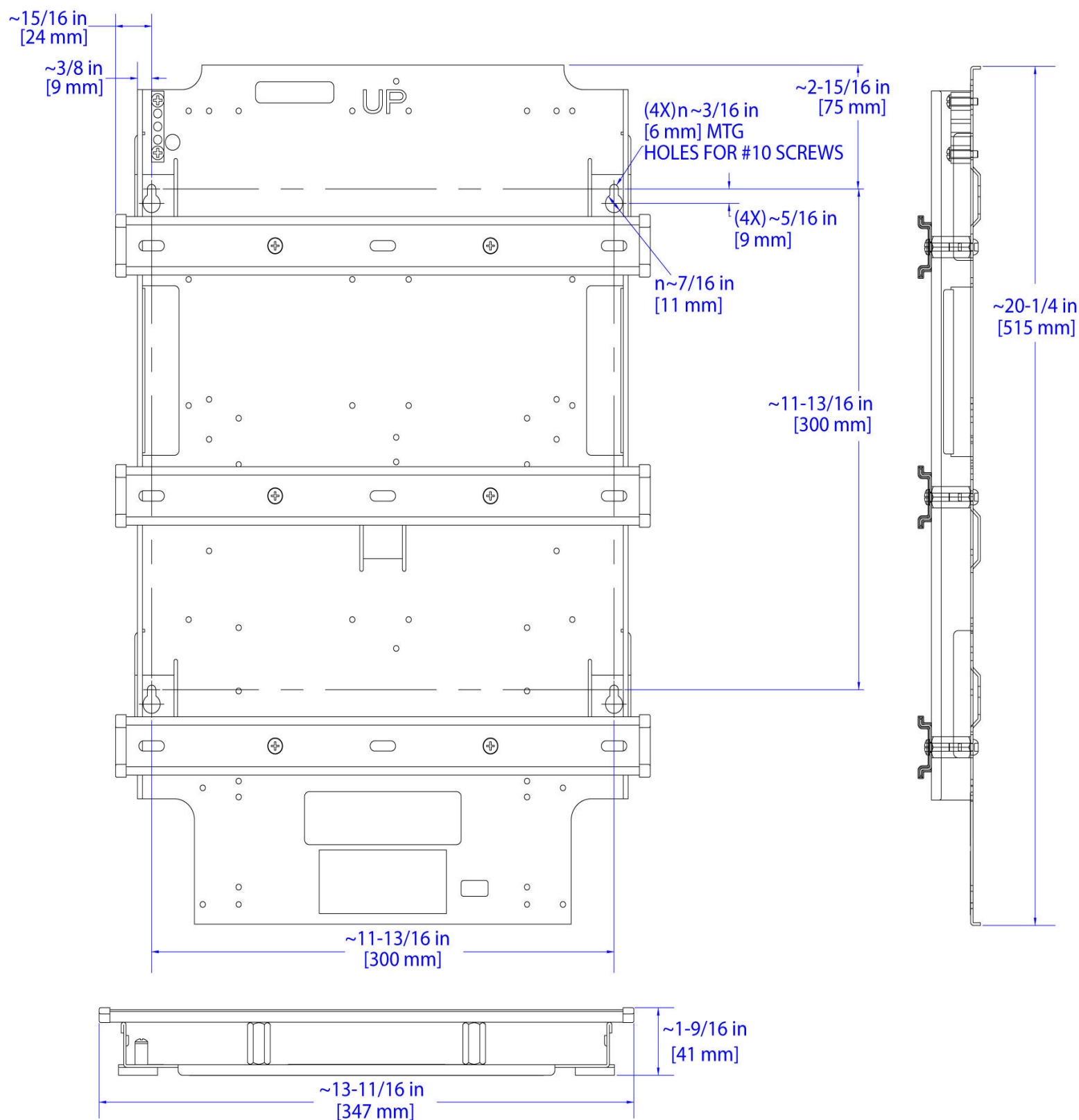
DIN-EN-2X18

Enclosure for DIN Rail Devices, 2 DIN Rails, 18 Units Wide



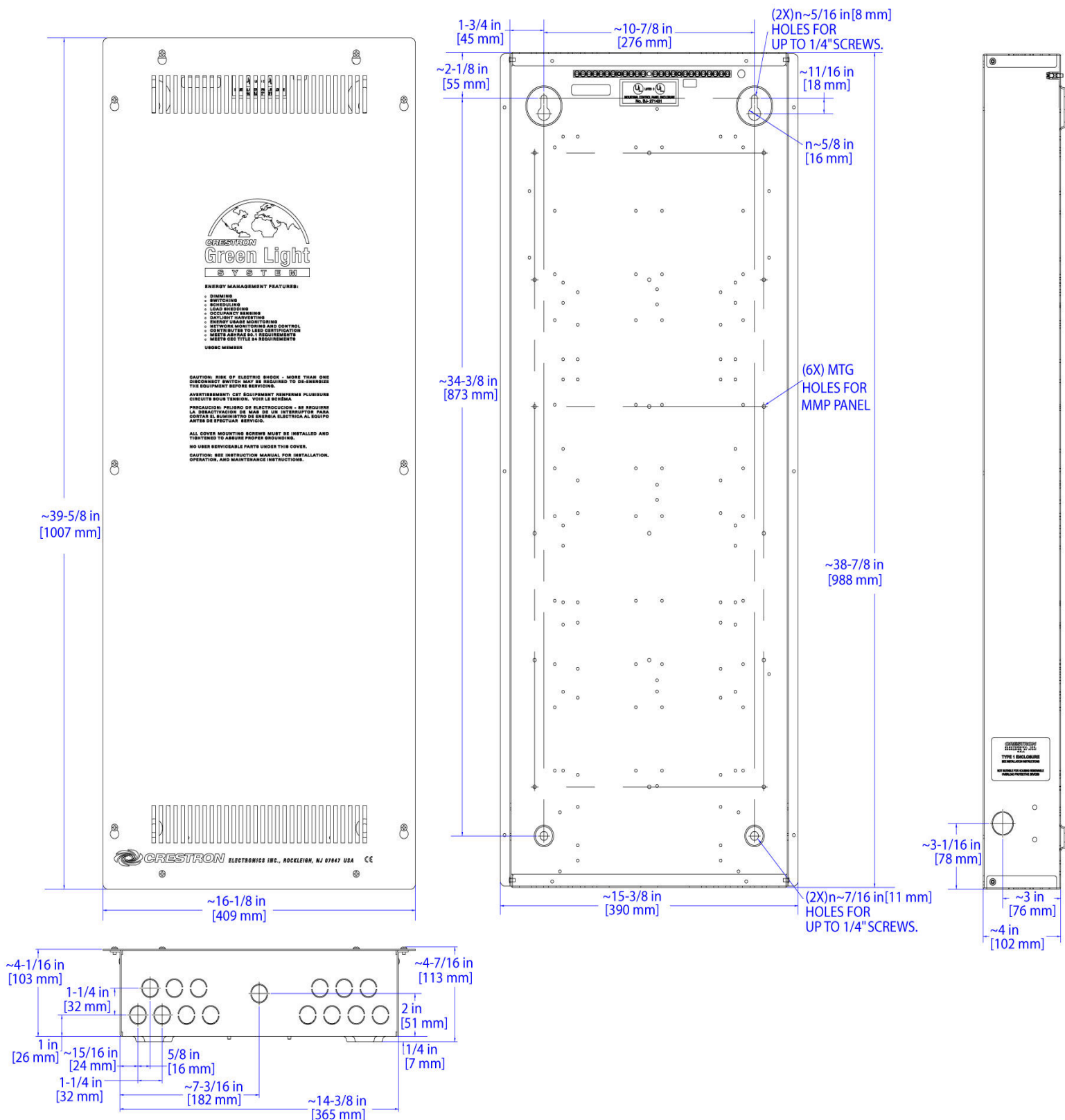
DIN-EN-2X18

Enclosure for DIN Rail Devices, 2 DIN Rails, 18 Units Wide



DIN-EN-2X18

Enclosure for DIN Rail Devices, 2 DIN Rails, 18 Units Wide



DIN-EN-2X18

Enclosure for DIN Rail Devices, 2 DIN Rails, 18 Units Wide

