

# Foster Cooktops

Quadra line cooktop Q4 - **7216 942**

## HIGHLIGHTS



### Professional grids.

All the Foster cooker hobs are equipped with cast-iron grids, a perfect material due to its many properties: high thermal capacity that improves the cooking efficiency; weight that improves safety; sturdiness; easiness to clean.



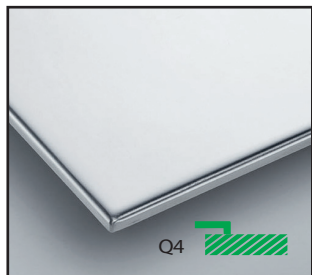
### Metal Knobs.

Exclusive and original, the Foster metal knobs are an example of the strength and quality of the materials used. A distinctive feature shared by all the Foster elements in this collection to, form an elegant uniformity in the kitchen.



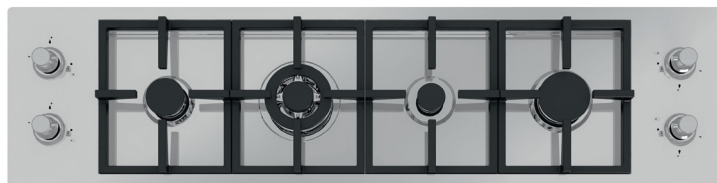
### Safe Cooking.

All Foster cooker hobs are equipped with safety valves. These shut off the gas supply very quickly if the flame accidentally goes out. The utmost freedom of movement it is guaranteed by the electronic under knob ignition that allows a one-hand movement.



### Q4 edge.

The casing has a square edge that stands outside the work surface by just 5/32".

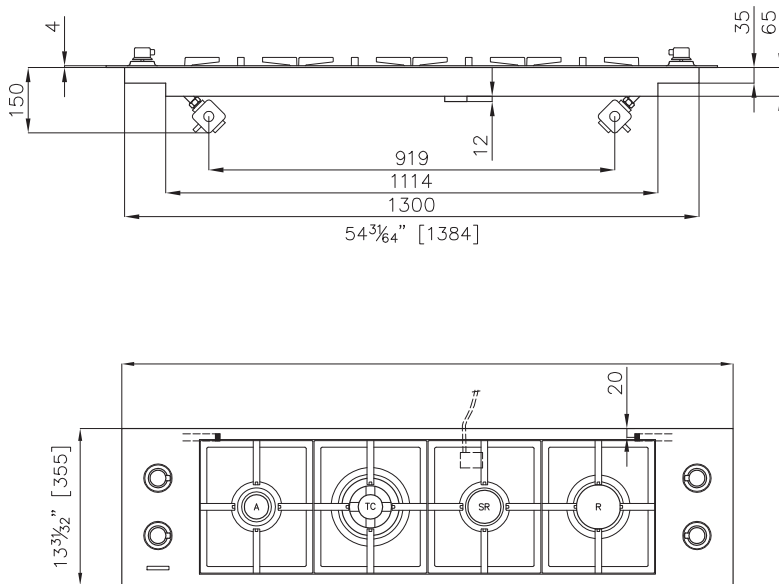


Series	Quadra
Model	Quadra line cooktop Q4
Dimensions	54 1/2" x 14"
Maintop finish	AISI 304 Stainless Steel Satin finish
Kind of Edge	4 mm - Q4 edge
Installation	Overmount
cut-out	53 45/64" x 13 3/16"
Grids	Enamelled cast iron
hob controls	Knobs
Knobs	solid Metal
Safety	Safety valves
Total power Btu/h	26,500 Btu
burners	4
Triple crown	5,300 - 11,000 Btu/h
rapid	3,700 - 7,600 Btu/h
semirapid	1,500 - 5,100 Btu/h
auxiliary	900 - 2,800 Btu/h
Simmer ring	1
Simmer Rate	900 Btu/h
<b>Technical requirments</b>	
Electrical supply	120V 60Hz
Gas std setting	Natural Gas
LP Gas conversion	kit for all burners included
<b>Certifications</b>	<b>CSA certified for US &amp; Canada</b>

# Foster Cooktops

Quadra line cooktop Q4 - **7216 942**

## DIMENSIONS



## CUT OUT

