

INSTRUCTION MANUAL

BLENDER

MANUEL D'UTILISATION

MIXEUR

MANUAL DE USO

LICUADORA

EN

FR

ES



Important information for the user
Informations importantes pour l'utilisateur
Información importante para el usuario



Instructions / Instructions / Instrucciones



Description / Description / Descripción



Use / Usage / Uso



Cleaning and maintenance / Nettoyage et entretien / Limpieza y mantenimiento



Safety instructions / Directives de sécurité / Instrucciones de seguridad



Information / Informations / Información



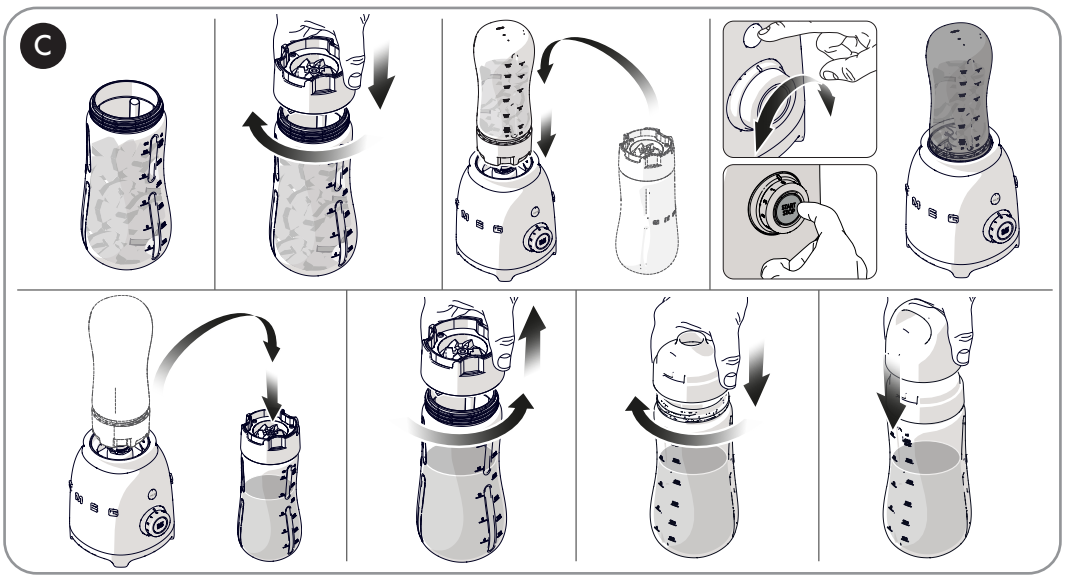
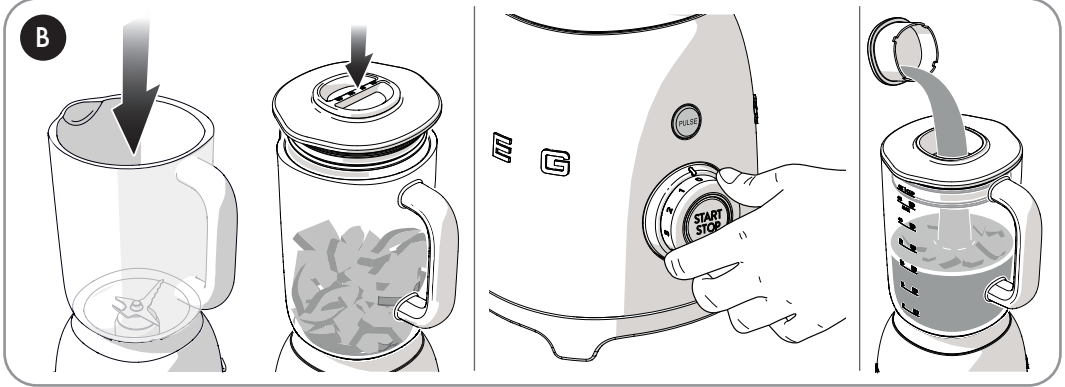
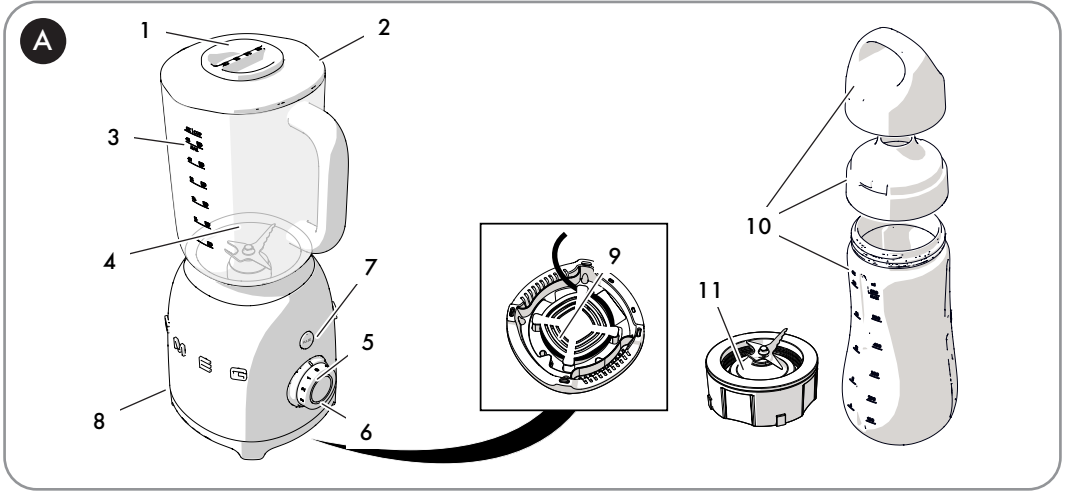
Advice / Conseil / Recomendaciones

Dear Customer, Thank you for purchasing one of our appliances. Our products are unique because they combine iconic style with innovative technical solutions. They match perfectly with other products in our range and work equally well as a standalone design objects in your kitchen. We hope you enjoy using your new appliance!

Cher client, merci beaucoup pour votre achat. Nos produits sont uniques car ils combinent une forte recherche esthétique avec une conception technique innovante. Ils sont coordonnés avec d'autres produits de la gamme et peuvent constituer des éléments de design pour votre cuisine. Nous espérons que vous aimerez utiliser votre nouvel appareil !

Estimado Cliente, Le agradecemos por haber comprado uno de nuestros aparatos. Nuestros productos son únicos porque combinan un estilo icónico con soluciones técnicas innovadoras. Combinan perfectamente con otros productos de nuestra gama y trabajan igual de bien como objetos independientes en su cocina. Le deseamos que pueda aprovechar plenamente su nuevo electrodoméstico.

SMEG S.p.A.



IMPORTANT SAFEGUARDS



NE

WARNING: If the instructions contained in this manual are not followed precisely, fire or explosion may result causing property damage, personal injury or death.



READ AND SAVE THESE INSTRUCTIONS

Your safety and the safety of others are very important.

We have provided many important safety messages throughout this manual and on the appliance.

Read all the instructions before using the appliance and always obey all safety messages.



RECOGNIZE SAFETY INFORMATION

This is a safety alert symbol. This symbol alerts you to potential hazards that can result in severe personal injury or death.

UNDERSTAND SIGNAL WORDS

A signal word - DANGER, WARNING or CAUTION - is used with the safety alert symbol. DANGER denotes the most serious hazards. It means you could be killed or seriously injured if you do not immediately follow the instructions. WARNING means you could be killed or seriously injured if the instructions are not followed. CAUTION indicates a potentially hazardous situation, which, if not avoided, could result in minor to moderate injury.

WARNING



- This appliance is intended for use in the home only.
- Use this appliance only for its intended purpose. The manufacturer cannot be held liable for damage caused by improper use of this appliance.
- This appliance complies with current safety regulations. Improper use of this appliance can result in personal injury and material damage.
- Read all the instructions before installing or using the appliance for the first time.
- Keep these operating instructions in a safe place and pass them on to any future user.



IMPORTANT SAFEGUARDS

The safety messages will inform you of potential hazards, on how to avoid the risk of injury and what can occur if the instructions are not followed.

IMPORTANT: Observe all codes and ordinances in force.

WARNING: For your safety, the instructions contained in this manual must be followed to minimize the risk of fire or explosion and to prevent property damage, personal injury or death.

Do not store or use gasoline or other flammable vapors, liquids or materials near this or any other appliance.



NOTE: This appliance is NOT designed for installation in manufactured (mobile) homes or in recreational vehicles (RVs).

DO NOT install this appliance outdoors.

WARNING



To reduce the risk of fire, electrical shock, personal injury, or damage when using the appliance, follow basic safety precautions, including the following:

IMPORTANT SAFEGUARDS



NE

1 Instructions

When using electrical appliances, basic safety precautions should always be followed including the following: this user manual is an integral part of the appliance and must therefore be kept in its entirety and in an accessible place for the whole working life of the appliance.

1.1 Intended use

Failure to comply with the safety instructions and failure to read the instructions manual may lead to the appliance being used incorrectly and cause personal injury.

- Do not use the appliance for purposes other than those for which it was designed. The appliance must only be used for mixing, blending and emulsifying ingredients and crushing ice. Every other use is considered improper.
- The appliance is not designed to operate with external timers or with remote-control systems.
- Only use the appliance indoors.



- In order to avoid hazards due to the inadvertent resetting of the thermal cut-out, this appliance must not be powered through an external switching device, such as a timer, or connected to a circuit that is regularly switched on and off by the utility.

- This appliance and the bottle accessory* are intended for household use.
- Any other use, for example in restaurants, coffee bars and coffee shops is considered improper.

- The bottle accessory can only be used in combination with the BLF03 blender. The accessory can be used to blend, mix and emulsify various ingredients for preparing drinks, juices and smoothies to be enjoyed indoors or out.
- Do not use the appliance for anything other than its intended use.
- Appliances can be used by persons with reduced physical, sensory or mental capabilities or lack of experience and knowledge if they have been given supervision or instruction concerning use of the appliance in a safe way and if they understand the hazards involved.
- This appliance must not be used by children. Keep the appliance and its cord out of reach of children.
- Close supervision is necessary when any appliance is near children.
- Children must not play with the appliance.

1.2 General safety instructions

Follow all safety instructions in order to use the appliance safely:

- Read this user manual carefully before using the appliance.
- Do not leave the appliance unattended while it is in operation.
- To protect against risk of electrical shock, do not immerse the appliance, the power cord or the plug in water or any other liquid.
- Do not use the appliance when the power cord or the plug is damaged or when the appliance has been dropped or is damaged in any manner.
- If the power cable is damaged, contact technical support immediately to arrange replacement.

* Standard on some models. Also available as an optional accessory.



IMPORTANT SAFEGUARDS

- If the supply cord is damaged, it must be replaced by the manufacturer, its service agent or similarly qualified persons in order to avoid a hazard.
- The cable is short to prevent accidents. Do not use an extension cord.
- Do not let cord hang over edge of table or counter to ensure that it does not come into contact with sharp edges.
- To unplug, grasp the plug and pull from the outlet. Never pull from the power cord.
- Do not place the appliance and its cord above or near other heat sources.
- Do not let cord contact hot surface, including the stove.
- This appliance is fitted with a ground connection for functional purposes only.
- Do not attempt to repair or make modifications to the appliance yourself: in the event of a fault, it should only be repaired by a qualified technician or contact the technical assistance service.
- Never try to put out a fire or flames with water: turn off the appliance, remove the plug from the outlet and smother the flames with a fire blanket or other appropriate cover.
- Do not touch moving parts while the appliance is in operation. Keep hands, hair and clothing, and utensils away from moving parts during operation, to prevent personal injury and/or damage to the appliance.
- Always turn OFF and disconnect the appliance from the power supply when it is not in use, left unattended or faulty.
- Always disconnect the appliance from the power supply before installing and removing the components.
- Always disconnect the appliance from the power supply and let it cool down before cleaning it.
- Always operate the blender with the lid in place.
- Check that the lid is correctly closed before turning on the blender.
- Do not overfill the blender (max. 1.5 liters).
- The use of attachments, including canning jars, not recommended by the manufacturer may cause a risk of injury to persons.
- Only use original spare parts. The use of spare parts not approved by the manufacturer could lead to fires, electric shocks or personal injury.
- Only place the blender on level and dry surfaces.
- Do not operate the blender empty as this could permanently damage the blade assembly.
- Do not use the blender as a storage compartment. Keep it empty before and after use.

1.3 Caution

- Let hot liquids cool down to room temperature before pouring them into the jug or in the bottle accessory.
- Risk of thermal burn injury due to excessive pressure in the jug and bottle. Do not blend hot liquids.
- To avoid the risk of cuts, and damage to the blender, do not put your hands or tools like cutlery, etc. into the blender jug while it is operating. You can use a wood or plastic spatula only when the blender is off.
- Do not use harsh detergents or sharp objects to wash or remove residues from the blender jug.
- Be careful when handling the sharp

* Standard on some models. Also available as an optional accessory.

IMPORTANT SAFEGUARDS



NE

cutting blades, emptying the jug and during cleaning.

- Make sure that the bottle accessory and its blade assembly are fixed correctly.
- Do not overfill the bottle accessory (maximum 600 ml).
- The blades are sharp: Cutting hazard! Never touch the blades with your hands. Take great care when installing, removing and cleaning the bottle accessory blade assembly.
- Switch off the appliance and disconnect from supply before changing accessories or approaching parts that move when in use.
- Avoid touching movable parts, such as the blade assembly.
- Always operate blender with cover in place.
- Do not operate the blender without the jug or bottle accessory mounted.
- Instructions for cleaning of the appliance can be found in the "5 Cleaning and Care" section.

1.4 Connecting the appliance

Make sure that the voltage and frequency of the power supply correspond to those indicated on the identification plate on the bottom of the appliance.

If the plug of the appliance is not compatible with the socket, contact Technical Assistance service for replacement.

1.5 Manufacturer liability

The manufacturer shall not be liable for injuries or property damage caused by:

- Use of the appliance other than as envisaged
- Not having read the user manual
- Tampering with any part of the appliance

- Use of non-original spare parts
- Failure to observe the safety instructions



Please keep these instructions carefully. If the appliance is passed on to others, they should also be given this instructions booklet.

These instructions can be downloaded from the Smeg website "www.smeg.com".

1.6 Disposal



This appliance must be disposed of separately from other refuse (Directive 2012/19/EU).

- The appliance does not contain substances in quantities sufficient to be considered hazardous to health and the environment, in accordance with current European directives.
- Old appliances do not belong in household waste! To comply with current legislation, old appliances, on reaching the end of their useful lives, should be taken to a disposal facility where they can be sorted. The relevant local authorities or their waste disposal operators can provide further information.
- Dispose of the packing materials at an appropriate disposal facility.

SAVE THESE INSTRUCTIONS



Description

2 Appliance description (Fig. A)

- 1) Measuring cup
- 2) Lid with pouring hole
- 3) 1.5 liter jug
- 4) Jug blades
- 5) Control knob
- 6) START/STOP button
- 7) Pulse button
- 8) Motor base
- 9) Built-in cord wrap
- 10) 600 ml bottle accessory with cap and cover *
- 11) Bottle accessory blade assembly

2.1 Before first use



Danger of electrocution

Plug into a grounded 3-pin outlet.

- Do not remove the earth pin.
- Do not use an adapter.
- Do not use an extension cord.
- Failure to follow these instructions could result in death, fire, or electrical shock.

- Remove all stickers and labels from the blender and clean the motor base with a damp cloth.
- Remove the jug from the blender.
- Wash and dry thoroughly (see "5.2 Cleaning the parts").



Danger of sudden start-up

- Make sure the blender is unplugged before fitting or removing the blade assembly.

2.2 Description of parts (Fig. A)

Measuring cup (1)

Can be used for dosing the ingredients.

Lid with pouring hole (2)

The lid has a seal that closes the jug tightly. It has a pouring hole in the center to make it easier to add ingredients safely when in operation.

1.5 liter Tritan™ Renew jug (3)

Jug with lip and graduated scale marked in liters and cups. Minimum capacity 0.25 liters (1 cup), maximum capacity 1.5 liters (6 cups).

Jug blades (4)

Stainless steel blade assembly for crushing ice cubes and preparing delicious smoothies, milkshakes, cocktails etc.

* Standard on some models. Also available as an optional accessory.



2.3 Description of controls

Control knob (5)

The knob allows you to select one of the four manual speeds available or to start the four pre-set programs: Smoothie, Green Smoothie, Ice Crush and Self-Clean. See "4.1 Speed setting suggestions when using the pre-set programs" for further information on which speed to use.

START/STOP button (6)

The button is used to start/stop blender.

Pulse button (7)

This function allows you to use maximum blending speed when using manual mode or it can be used on its own at different speeds (See "4 Functions").

2.4 Description of accessories*

600 ml bottle accessory, cap with spout and cover (10)

Tritan™ Renew bottle, cap with spout and cover with silicone seal.

Bottle accessory blade assembly (11)

Stainless steel blade assembly for preparing delicious smoothies, milkshakes, cocktails etc.



Sharp blades Danger of cuts

- Never touch the blades with your hands.
- Take great care when installing and removing the blade assembly.



- The accessories intended to come into contact with food are made of materials that comply with the provisions of current legislation.

* Standard on some models. Also available as an optional accessory.



Use

3 Use

3.1 First use

Thoroughly wash and dry the components as indicated in section "5 Cleaning and care".

3.2 Using the blender (Fig. B)

- Insert the blender jug (3) onto the motor base (8).
- Place the ingredients in the jug (3), taking care not to exceed the maximum capacity (1.5 liters - 6 cups).
- Position the lid (2) with the measuring cup (1) fitted onto the blender jug (3). Ensure the lid (2) is tightly closed.
- Insert the plug of the blender into the power outlet. The red LED will flash to indicate the power is on.
- Use the control knob (5) to select the required speed or one of the preset programs.



The **PULSE** button can be used in combination with speeds 1 to 3.

- Press the **START** button to start blending. See the table "4.1 Speed setting suggestions when using the pre-set programs".



Speeds 1 - 4 allow continuous blending. You can stop the blender by pressing the **STOP** button.

The speed can be changed at any time during blending.



Important

Do not operate at speeds 1-4 for more than one minute at a time (TBC).

- You can add additional ingredients whilst blending by removing the measuring cup (1) and pouring in ingredients through the hole in the lid (2).



Danger

The blender is not intended for blending or grinding dry foods. Only add dry ingredients together with a sufficient amount of liquid to prevent the blender from overheating, which could permanently damage the blade unit.

- If you have selected a speed between 1 and 4, when you have finished blending, press the **STOP** button, turn the control knob (5) to '0' and unplug the blender. If one of the pre-set programs has been selected, the appliance will stop automatically. Refer to section "4 Functions" for further information.



Canceling/stopping the blending cycle

The blending cycle can be canceled or stopped at any time pressing the **START/ STOP** button.



3.3 How to use the bottle accessory * (Fig. C)



Sharp blades

Danger of cuts

- Never touch the blades with your hands.
- Take great care when installing and removing the blade assembly.
- Place the ingredients into the bottle (10), taking care not to exceed the maximum capacity (600 ml).



For best results, we recommend that you:

- add the hard ingredients first, then the soft ones and then the liquids;
- make sure that the liquid ingredients do not exceed 400 ml;
- do not to exceed the maximum capacity (600 ml).



Risk of damage to the accessory

- The Ice Crush program cannot be used with the bottle accessory. If you wish to add ice, crush it in the blender jug and then transfer it to the bottle.
- Secure the blade support (11) to the bottle by turning it clockwise. Make sure that it is fastened tightly.
- Place the base of the blender on a flat horizontal surface. Plug it into the power outlet.

- Turn the bottle over (10) and connect it to the motor base (8).
- Use the control knob (5) to select the required speed or one of the four pre-set programs according to the result you wish to obtain and start the blender to prepare the drink.
- If you have selected a speed between 1 and 4, when you have finished blending, press the **STOP** button, turn the knob to '0' and unplug the blender. If one of the pre-set programs has been selected, the appliance will stop automatically. Refer to section "4 Functions" for further information.

* Standard on some models. Also available as an optional accessory.



4 Functions



Safety lock system

The blender is fitted with a safety lock system that automatically switches off the blender when the jug is removed. It also features a motor safety cutout which trips if the motor is overloaded.



Smooth Start System

When the appliance is started, the speed gradually increases until the set speed is reached. This prevents damage to the appliance and accessories, prevents ingredient spillage and improves mixing. The Smooth Start system only works when a speed between 1 and 4 is selected and does not work in **PULSE** mode or with pre-set programs.

PULSE function

When the product is operating at speeds 1-3, pressing the **PULSE** button will run the blender at maximum speed.

The device will return to the initial speed that was selected when the button is released. When the product is off, turning the knob to one of the 4 speeds and pressing the **PULSE** button will make the blender run at the selected speed.



The **PULSE** function does not work in combination with the pre-set programs.





Pre-set programs

When one of the four above mentioned pre-set programs is selected, after you have pressed the **START** button, the blender will start to operate automatically and the central button LED will light up to indicate that the cycle is running. The button LED switches off at the end of the cycle.


For further information, see the table "4.1 Speed setting suggestions when using the pre-set programs".



4.1 Speed setting suggestions when using the pre-set programs

Function	Description	Time	Suggested preparations
Manual 1-4	Variable speeds 1-4 allow maximum control of the blender.	60 sec	Fruit or vegetable puree, soups, smoothies, sauces and dressings, whipped cream, blended crushed ice drinks, batters, mousses, sorbets.
 PULSE	Allows you accurately control the mixing duration and frequency.	5 sec	Ice cubes, chopped meat/fish.
 SMOOTHIE	The blender operates at the correct speed to achieve thick and creamy results.	50 sec	Smoothies/milkshakes made with fresh or frozen fruit.
 GREEN SMOOTHIE	Allows you to make delicious healthy smoothies.	50 sec	Green smoothies made with spinach, kale, fruit and leafy green vegetables.
 ICE CRUSH	The blender operates with short bursts of power to crush the ice until it becomes slush.	40 sec	Crushed ice cubes, chopped frozen fruit and vegetables.

The blender has a self-cleaning function:

Function	Description	Time	User instructions
 Self-cleaning	Short bursts of power and high speed, allows you to clean the jug and the bottle accessory.	60 sec	See section "5.3 Using the jug / bottle accessory self-clean option" for detailed instructions.

i The speeds indicated in the table are approximate and can vary depending on the recipe, the interaction of the different ingredients used and the consistency you wish to obtain.

* Standard on some models. Also available as an optional accessory.



Cleaning and care

Tips for using your blender

- For best results, we recommend that you:
 - dice the food to be blended.
 - first add the liquids, then the leafy green vegetables and then the soft ingredients followed by dried fruit / seeds / cereals and lastly ice / frozen ingredients.
 - you might have to stop mixing in order to push the ingredients down the sides of the blender jug with a spatula.
- When blending liquid and dry ingredients, blend liquids first and then add the dry ingredients.
- Remove any hard parts from foods to be blended (e.g. cores or stones from fruit, bones from meat etc.).
- Do not allow food residues to dry inside the jug and blades for too long, as they could become difficult to remove. If you cannot clean it right away, pour a little warm water and let it soak.
- Do not process hot food. Let it cool to room temperature before blending.

5 Cleaning and care



Improper use. Danger of electrocution

- Make sure the blender is unplugged before fitting or removing the blade assembly.



Improper use. Risk of damage to surfaces.

- Do not use steam jets to clean the appliance.
- Do not use cleaning products containing chlorine, ammonia or bleach on parts with metallic finishes (e.g. anodized, nickel- or chrome-plated).
- Do not use abrasive or corrosive detergents (e.g. powder products, stain removers and metallic scourers).
- Do not use rough or abrasive materials or sharp metal scrapers.

5.1 Cleaning the motor base

To keep the outer surface of the blender motor base in good condition, it should be cleaned regularly after use. Let the appliance cool down first. Use a damp and soft cloth with mild detergent.



5.2 Cleaning the parts



Sharp blades

Danger of cuts

- Never touch the blades with your hands.
- Take great care when installing and removing the blade assembly.

Blender

- Wash the jug in warm soapy water or use the pre-set SELF-CLEAN program. DO NOT wash in a dishwasher.
- The blender lid (2) and measuring cup (1) can be washed by hand in warm water and a mild detergent or in the dishwasher.
- Make sure that the parts are completely dry before putting them back on the blender.

Bottle accessory*

- The bottle (10) can be washed by hand or in a dishwasher, making sure that you remove the blade assembly (11), or using the pre-set SELF-CLEAN program.
- The blade assembly (11) should only be washed by hand in warm water and a mild detergent.
- Make sure that the parts are completely dry before putting them back on the blender.
- Any other servicing should be performed by an authorized service representative.

5.3 Using the jug / bottle accessory self-clean option

- Place a few drops of warm water and mild detergent in the jug / bottle accessory.
- Select the pre-set SELF-CLEAN program.
- Press the START button.
- Remove the jug/bottle accessory, empty and rinse.
- Dry thoroughly.

* Standard on some models. Also available as an optional accessory.

What to do if...

Problem	Cause	Solution
The motor will not start.	The motor has overheated.	Unplug the blender and allow the motor to cool.
	The plug is not properly inserted in the power outlet.	Insert the plug into the power outlet. Do not use adapters or extensions. Check that the house main breaker is on.
	The cable is defective.	Contact an Authorized Service Center.
	No power.	Check that the house main breaker is on.
The blender vibrates.	The blender is not resting on a stable surface.	Place the blender on a flat, stable surface.
	The anti-slip rubber feet are worn.	Have them replaced at an Authorized Service Center.
	The speed used is too high or the load is excessive.	Set a lower speed and ensure the jug has not been overfilled.
The blender switches on, but the blades do not turn.	The jug has not been correctly locked into its base.	Remove the jug from its base and lock it into place.
The blender stops while operating.	The motor has overheated.	Unplug the blender and allow the motor to cool down.
The blender stops during operation and the white LED flashes.	The blades may have jammed.	Unplug and free the blades using a spatula.



If the problem has not been resolved or in the event of another type of fault, contact your local technical support center.



6 Recipes

Smoothie

Ingredients:

- 2 nectarines, pitted (or tinned peaches in syrup) and cut into pieces
- 125 g frozen raspberries
- 125 g frozen strawberries
- 125 ml orange juice
- 125 ml apple juice

Method:

1. Put the nectarine pieces and the juices into the blender jug.
2. Add the frozen fruit.
3. Turn the control knob to the Smoothie program and start the blender by pressing the **START** button.

Green Smoothie

Ingredients:

- 240 ml water
- 300 g green grapes
- 180 g pineapple, peeled, halved
- 120 g fresh spinach
- 110 g small banana, peeled
- 130 g ice cubes

Method:

1. Put the pieces of fruit and the water into the blender jug.
2. Add the ice cubes.
3. Turn the control knob to the Green Smoothie program and start the blender by pressing the **START** button.

Whipped cream

Ingredients:

- 500 g cold whipping cream
- 50 g icing sugar

Method

1. Whip the cream in the blender at speed 3 for approximately 30 seconds.
2. You can stop the blender by pressing the **STOP** button.
3. Add the icing sugar.
4. Select speed 4 and whip for a further 15 seconds, until the cream is fully whipped. The cream can also be whipped without icing sugar. In this case, select speed 4 and whip for 40 seconds.

Vegetable puree

Ingredients:

- 300 g zucchini (or vegetables of your choice)
- 100 g water or vegetable stock

Method

1. Steam the vegetables and cut them into rounds.
2. Put the pieces in the blender and blend for 45 seconds at speed 4, adding a little water or vegetable stock at a time until you obtain a homogeneous puree.

The manufacturer reserves the right to make any changes deemed necessary for the improvement of its products without prior notice. The illustrations and descriptions contained in this manual are therefore not binding and are merely indicative.

Le fabricant se réserve le droit d'apporter, sans préavis, toutes les modifications qu'il jugera utiles pour l'amélioration de ses produits. Les illustrations et les descriptions figurant dans ce manuel ne sont pas contraignantes et n'ont qu'une valeur indicative.

El fabricante se reserva el derecho a aportar sin aviso previo todas las modificaciones que considere necesarias para la mejora de sus propios productos. Las ilustraciones y las descripciones contenidas en este manual no comprometen, por tanto, al fabricante y tienen un valor meramente indicativo.