

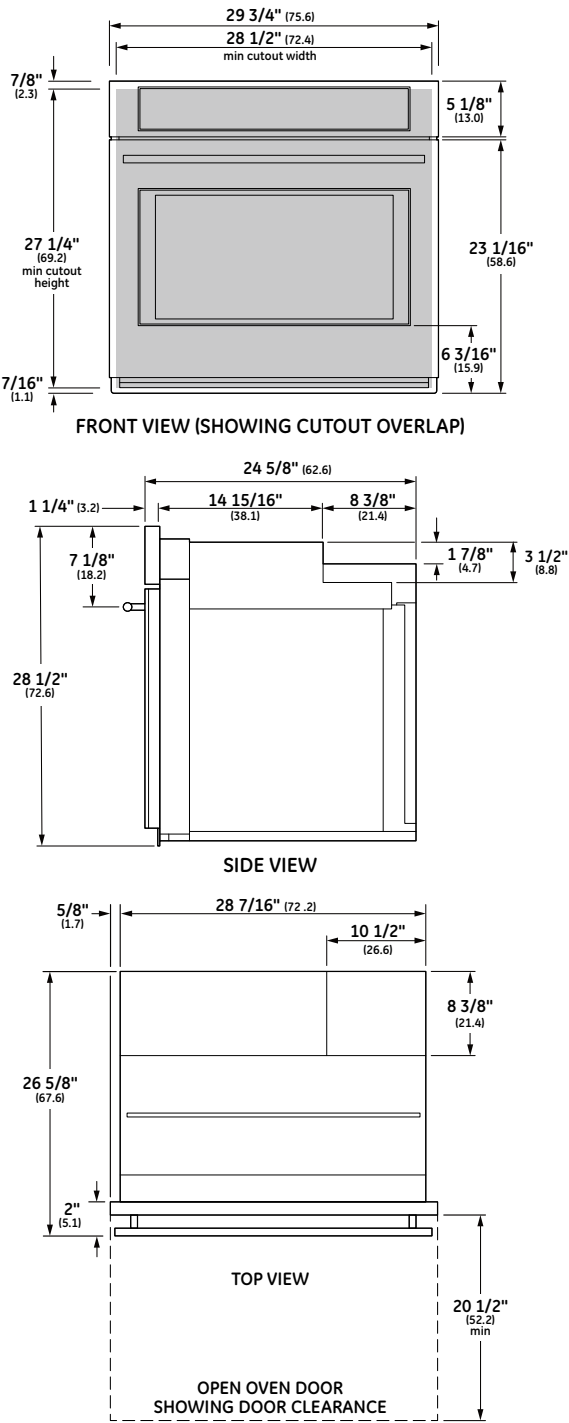


| SPECIFICATIONS                       |   |
|--------------------------------------|---|
| Overall Width                        | 29 3/4" (75.6)                                  |
| Overall Height                       | 28 1/2" (72.4)                                  |
| Overall Depth Including Handle       | 26 5/8" (67.6)                                  |
| Oven Door Clearance                  | 20 1/2" (52.0)                                  |
| Overall Oven Interior Capacity       | 5.0 cu. ft. (141.6 liters)                      |
| Oven Interior Dimensions (W x H x D) | 25" x 17 3/8" x 20 1/4" (63.5 x 44.1 x 51.4 cm) |
| Minimum Cabinet Width*               | 30" (76.2 cm)                                   |
| Minimum Cabinet Depth*               | 24" (61.0 cm)                                   |
| Minimum Base Support                 | 200 lbs. (90 kg)                                |
| Cutout Width*                        | 28 1/2" (72.4 cm) Min<br>28 5/8" (72.7 cm) Max  |
| Cutout Height*                       | 27 1/4" (69.2 cm) Min<br>27 5/16" (69.4 cm) Max |
| Cutout Depth*                        | 23 1/2" (59.7 cm) Min                           |
| Volts/Hertz/Amps                     | 240/208 V AC, 60 Hz, 20A                        |
| Conduit Length                       | 40" (72" available special order: WB18T10398)   |
| Electrical Rating                    | 3.4 kW at 208V<br>4.5 kW at 240V                |
| Shipping Weight                      | 184 lbs. (84 kg)                                |

\* Additional space will be needed for flush installation.

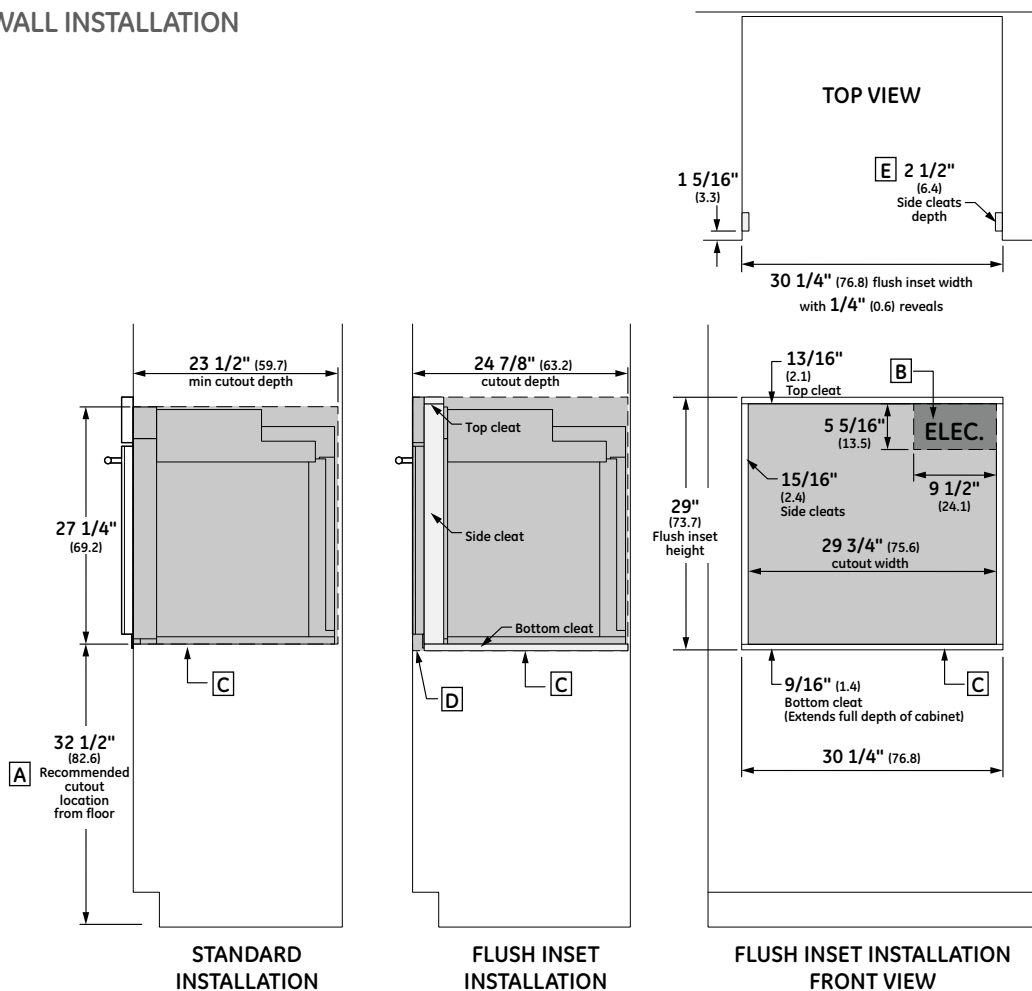
**ATTENTION ELECTRICIAN:**  
A 240/208V, 60Hz, 20 Amp circuit is required. An individual properly grounded branch circuit or circuit breaker is required. Hardware junction box is required for built-in product.

OVERALL DIMENSIONS



Dimensions in parentheses are in centimeters unless otherwise noted. Actual product dimensions may vary due to manufacturing tolerances.

## WALL INSTALLATION

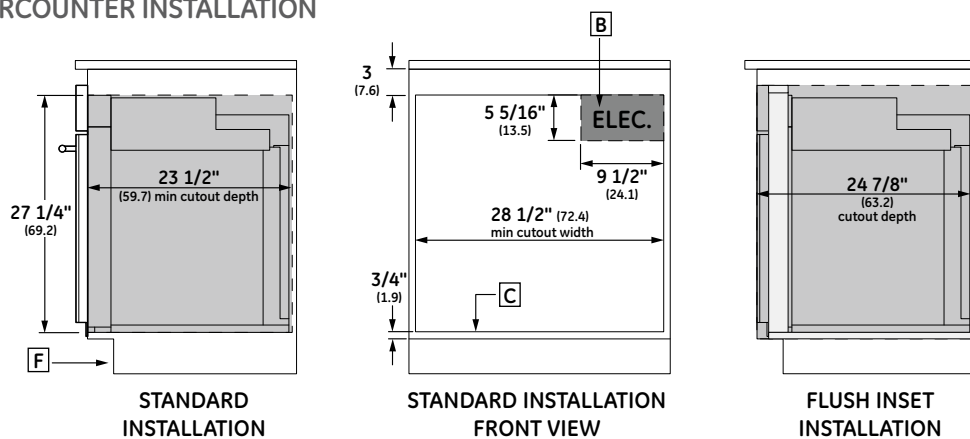


Allow 1/4" (0.64 cm) clearances from side edges of oven door.

## NOTES

- A Based on a user height of 5' 6" to 5' 10"
- B Junction box location (May also be located in adjacent cabinet.)
- C Platform must be able to support 200 lbs (90 kg)
- D Cabinet surfaces must be an appearance finished surface for flush installation.
- E Cleats may be visible and should be finished to match cabinetry.
- F Maximum toe kick height of 4" when installed beneath a certified cooktop.

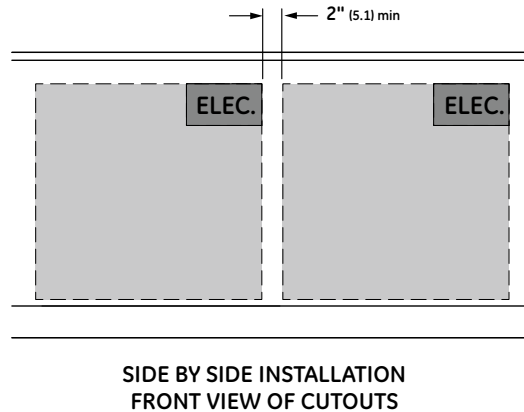
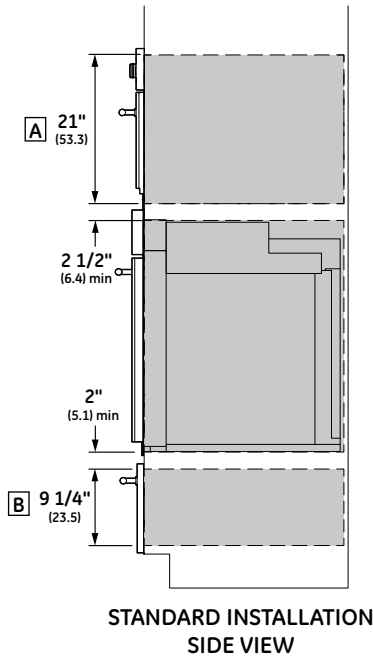
## UNDERCOUNTER INSTALLATION



For more details, refer to the installation instructions for this product on Monogram.com. Dimensions in parentheses are in centimeters unless otherwise noted.

## INSTALLATION WITH ADVANTIUM AND WARMING DRAWER

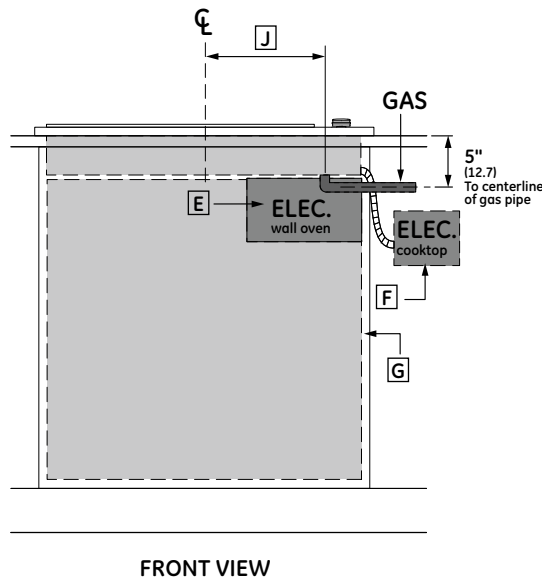
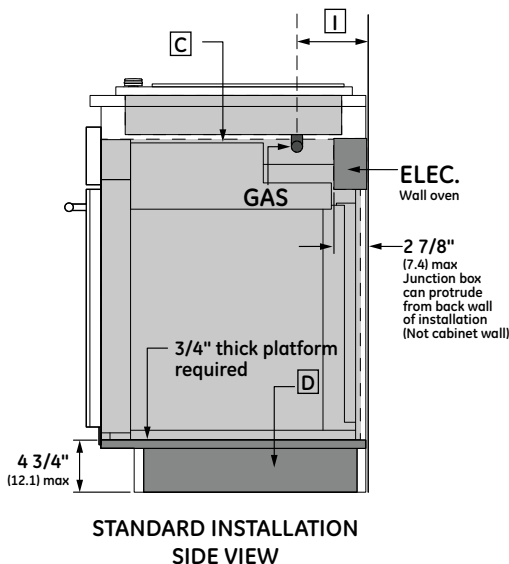
## SIDE BY SIDE INSTALLATION



## NOTES

- A** Dimensions per Advantium or Microwave Oven requirement
- B** Dimension per Warming Drawer requirement
- C** Note this oven is only approved to be installed under specific models as labeled on this unit.
- D** Support platform made of 3/4" (1.9 cm) wood is required. Must be capable of supporting 200 lbs (90 kg). Support Platform base to be same height as toe kick.
- E** Junction box location for wall oven. (May also be located in adjacent cabinet).
- F** Gas regulator and electric connections for cooktops must be located in an adjacent accessible location to the right
- G** Top and/or side fillers may be necessary if unit is positioned between existing cabinets. Be sure they are attached securely, since they will anchor the oven in the cabinet.
- H** For flush oven installations, the cooktop cutout must be set back 2 1/2" (6.4 cm) plus the cleat setback.
- I** Dimension varies based on model.  
example:  
ZGU385 5 1/2" (14.0 cm) (from wall)  
ZGU384 4 5/16" (11.0 cm) (from wall)
- J** Dimension varies based on model.  
example:  
ZGU385 0" (centerline)  
ZGU384 12 1/16" (30.6 cm) (centerline)

## UNDER COOKTOP INSTALLATION



For more details, refer to the installation instructions for this product on Monogram.com. Dimensions in parentheses are in centimeters unless otherwise noted.

## FEATURES AND BENEFITS

**Glass Touch Controls** - Set temperatures quickly and clean with little effort

**True European Convection with Direct Air** - Channels heated air from the top of the oven and circulates it around food on all sides for perfectly uniform baking and roasting

**5.0 Cu. Ft. Capacity** - Accommodates even the largest meals

**Ten-Pass Bake Element** - Covers more surface area for more even baking results

**Theatre-Style Halogen Oven Lighting** - Illuminates the oven and gradually increases intensity to make it easy to see cooking progress

**Notification Lighting** - Allows you to check cooking status with a quick glance

**Self-Clean, Heavy-Duty Roller Rack** - Glides open smoothly to simplify loading and unloading

**Self-Clean with Steam Clean Option** - Gives you flexible options for thorough oven cleaning

**Ten-Pass, Dual Broil Element** - Evenly browns dishes of all types and sizes

**WiFi Enabled** - Allows you to control oven functions from anywhere inside or even outside your home, using your smartphone or other web-enabled mobile device

**Black Interior** - Offers a stylish complement to the sophisticated exterior design



70 to 90% U.S. content. Product content details at [GEAppliances.com/USA](http://GEAppliances.com/USA)

|   |  |
|---|--|
| <b>Client</b>   GE Appliances<br><b>Job Number</b>   82323<br><b>File Name</b>   ZET9050SHSS_c4.indd<br><b>Date</b>   7/6/15<br><b>MB Database</b>   gea_creative/80650<br><b>Operator</b>   glb, jab jv<br><b>Art Director</b>   Chris Colby<br><b>Art ACD</b>   Chris Colby   | <b>NOTES:</b><br><br>8.5" x 11"<br>4pgs -<br><br><b>COLOR:</b> ■ 4 Color    □ Black and White<br>□ 1 PMS    □ 2 PMS    □ 3 PMS |
| <div data-bbox="342 716 467 869" data-label="Image"> </div> <div data-bbox="267 884 540 919" data-label="Text"> <b>POWER</b>CREATIVE       </div> <div data-bbox="636 753 990 789" data-label="Text"> <b>AE:</b> _____       </div> <div data-bbox="1031 753 1391 789" data-label="Text"> <b>Art ACD:</b> _____       </div> <div data-bbox="1031 810 1391 844" data-label="Text"> <b>Art Director:</b> _____       </div> <div data-bbox="636 871 990 907" data-label="Text"> <b>Proofreader:</b> _____       </div> <div data-bbox="1031 865 1391 903" data-label="Text"> <b>Writer ACD:</b> _____       </div> |  |

MB/ gea\_creative/ 0\_quick\_specs/ quick specs/ 2015\_Monogram /  
 Wallovens /  
 (or appropriate product line subfolder)