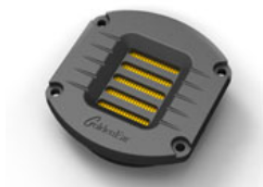


	SUPERCENTER X	SUPERCENTER XL	SUPERCENTER REFERENCE
<b>Dimensions</b>	20" (50.8 cm) W x 5-3/4" (14.6 cm) H x 11" (28.0 cm) D	29" (73.5 cm) W x 5-3/4" (14.6 cm) H x 11" (28.0 cm) D	35" (88.9 cm) W x 5-3/4" (14.6 cm) H x 11" (28 cm) D
<b>Weight</b>	Product: 15 lbs (7 kg) / Shipping: 22 lbs (10 kg)	Product: 21 lbs (9.5 kg) / Shipping: 28 lbs (12.7 kg)	Product: 31 lbs (14 kg) / Shipping: 38 lbs (17.2 kg)
<b>Frequency Response</b>	45 Hz - 35 kHz	36 Hz - 35 kHz	33 Hz - 35 kHz
<b>Efficiency</b>	90 dB	91 dB	91 dB
<b>Nominal Impedance</b>	Compatible with 8 ohms	Compatible with 8 ohms	Compatible with 8 ohms
<b>Driver Complement</b>	Two - 5-1/4" Cast-Basket Mid/Bass Drivers  One - HVFR™ High-Velocity Folded Ribbon High-Frequency Radiator  One - 7" x 10" Quadratic Planar Low-Frequency Radiator	Two - 5-1/4" Cast-Basket Mid/Bass Drivers  One - HVFR™ High-Velocity Folded Ribbon High-Frequency Radiator  Two - 6-3/4" x 8" Quadratic Planar Low-Frequency Radiators	Four - 5-1/4" Cast-Basket Mid/Bass Drivers  One - High-Gauss Reference HVFR™ High-Velocity Folded Ribbon High-Frequency Radiator  Two - 6-3/4" x 8" Quadratic Planar Low-Frequency Radiators  One - 7" x 10" Quadratic Planar Low-Frequency Radiator
<b>Recommended Amplification</b>	20 - 200 watt/channel	20 - 250 watt/channel	20 - 350 watt/channel

#### State-of-the-art GoldenEar Technology Drivers



High-Velocity Folded Ribbon  
Tweeter (HVFR)

- Tweeter Diaphragm is a High Temperature Film
- High-Power Neodymium Magnets
- Squeezes/Pressurizes Air Instead of Pushing It
- Greater Control, Smoother More Extended Response
- Vanishingly Low Distortion
- Dramatically Improved Dynamic Range and Detail
- Superb Dispersion Characteristics
- High-Gauss Reference HVFR on Reference Model



5-1/4" High-Definition Bass/Midrange  
Driver

- GoldenEar Multi-Vaned Phase Plug (MVPP) Design
- Rigid Free-Flow Cast-Basket Chassis
- Proprietary Computer Optimized Cone Topology
- High-Gauss Magnet Assembly (Focus Field design on Reference model)
- 1" High-Temperature Kapton Former Voice Coil
- Extremely Extended Resonant-Free Linear Frequency Response Characteristics



5-1/4" High-Definition Bass/Midrange  
Driver (SuperCenter XXL)

- Exceptionally Long-Throw for Tremendous Dynamic Range and Extended Bass
- Rigid Free-Flow Cast-Basket Chassis
- Proprietary Computer Optimized Cone Topology
- High-Gauss Magnet Assembly
- 1" High-Temperature Kapton Former Voice Coil
- Extremely Extended Resonant-Free Linear Frequency Response Characteristics



Quadratic Planar Low-Frequency  
Radiator

- Pressure-Coupled Loading Extends Usable Bass Performance
- Performs Like a well-Tuned Transmission Line but with Superior transient Performance and Control
- SuperCenter X Uses One, SuperCenter XL Uses Two, SuperCenter XXL Uses Three