

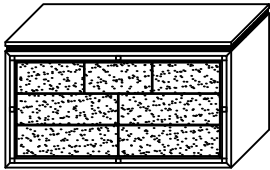

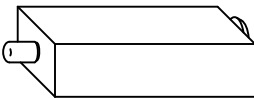
# COLLETE-WHITE-DR ASSEMBLY INSTRUCTION

Thank you for purchasing this quality product. Be sure any small parts and hardware not for children under 3 years.  
Adult assembly required.

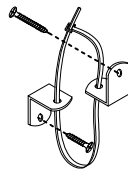
**"DO NOT TIGHTEN SCREWS UNTIL COMPLETELY ASSEMBLED"**

**"DO NOT OVERTIGHT ANY HARDWARE"**

## PARTS LIST

ITEM	DESCRIPTION	DRAWING	QTY
1	DRESSER		1 PC
22	LEG (WITH PLASTIC COVER)		4 PCS
23	CENTRE SUPPORT LEG (WITH PLASTIC COVER)		1 PC

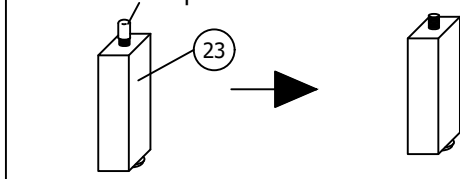
## HARDWARES LIST

ITEM	DESCRIPTION	DRAWING	QTY
A	TIPPING RESTRAINT		1 PC

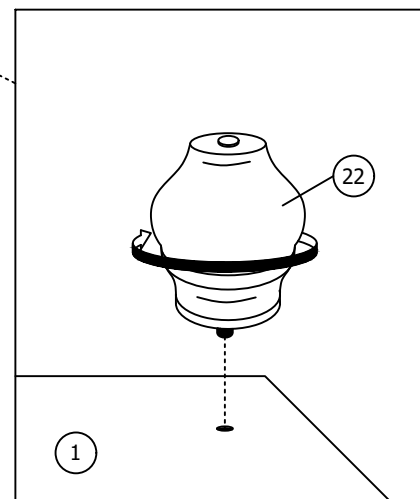
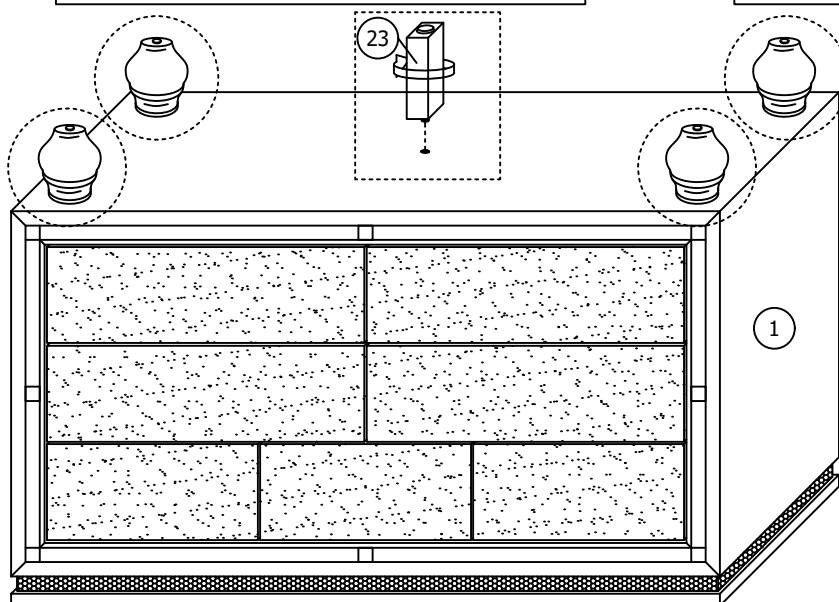
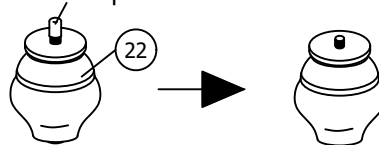
## ASSEMBLY STEPS

### STEP 1

Take off this plastic cover before assembly



Take off this plastic cover before assembly



# COLLETE-WHITE-DR ASSEMBLY INSTRUCTION

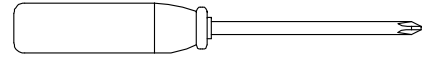
## STEP 2

STEP 2.1: Turn loose all the handles and screws.

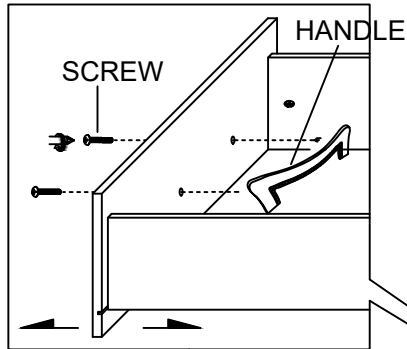
STEP 2.2: Exchange location of these items then tighten.

### ASSEMBLY TOOLS REQUIRED

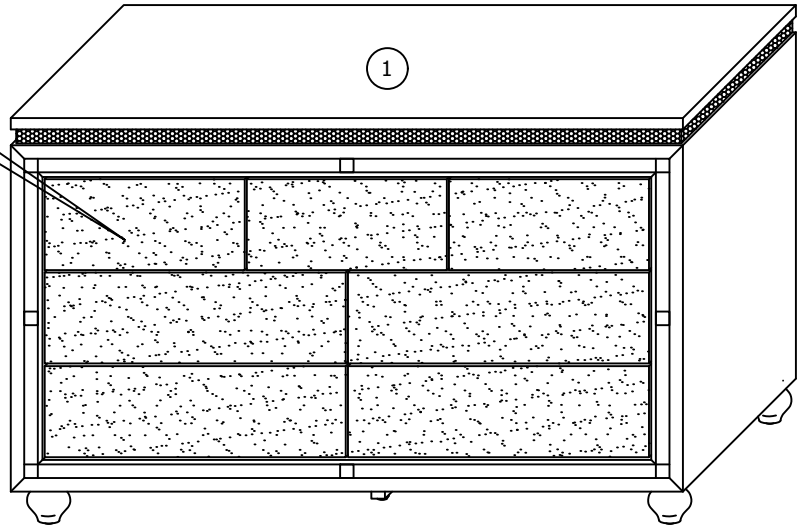
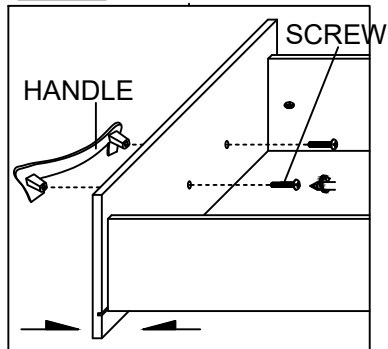
**Screwdriver (not provide)**



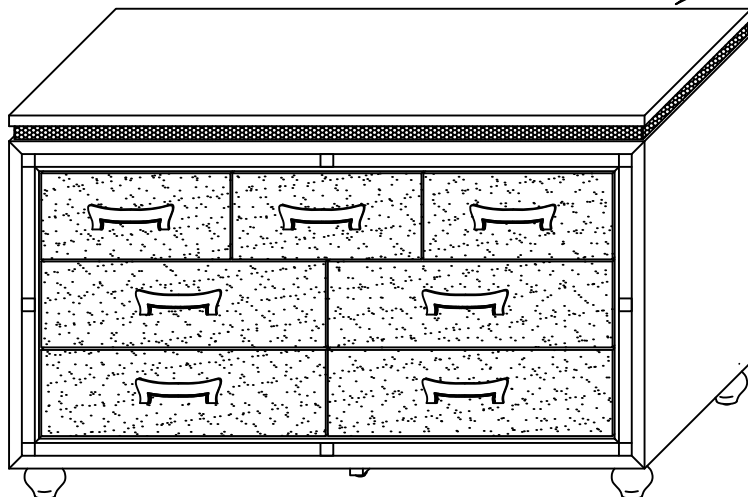
### STEP 2.1



### STEP 2.2

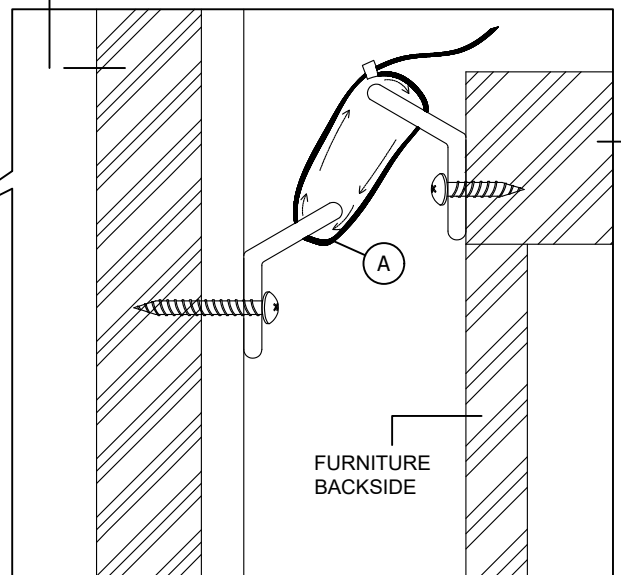


## STEP 3



WALL BOARD AND STUD

FURNITURE TOP



**ASSEMBLY COMPLETED**