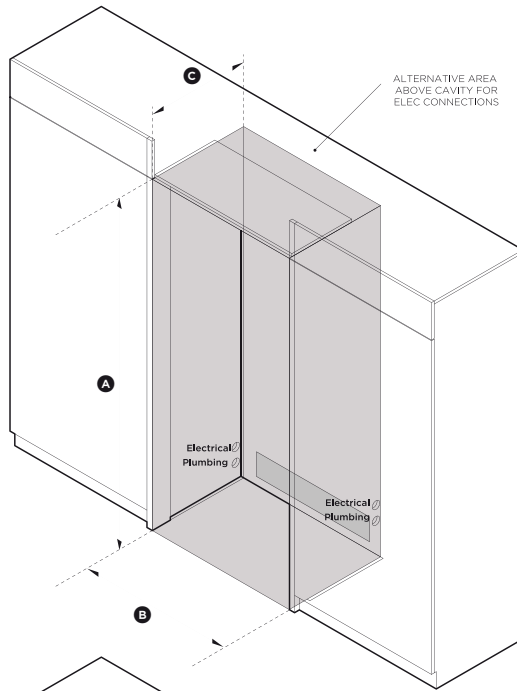
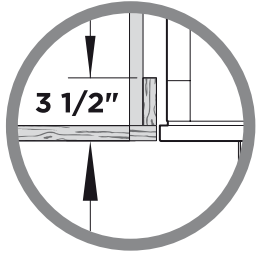
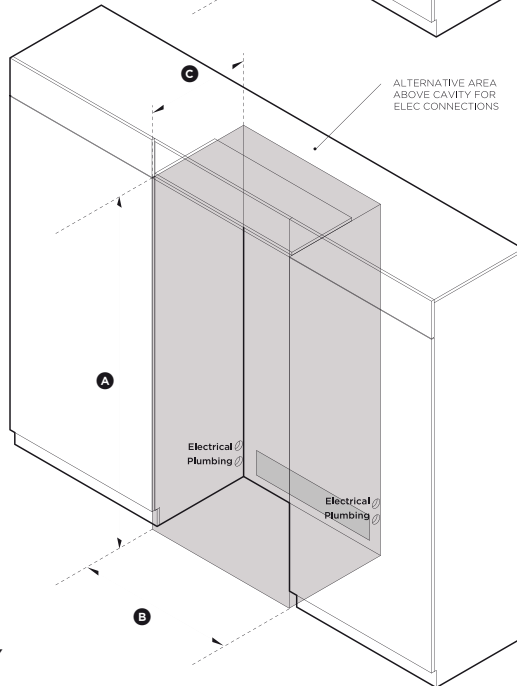
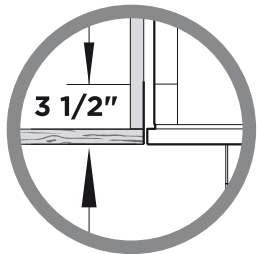


## CAVITY PREPARATION

**Framed:** Finished return, sides and top



**Frameless:** Finished return, sides and top



ISO VIEW OF CAVITY

## 36" ACTIVSMART™ BUILT-IN REFRIGERATOR

Model no:

**RS36A80J1**

Cavity Dimensions		in
Ⓐ Overall height of cavity		80"
Ⓑ Overall width of cavity		36"
Ⓒ Overall depth of cavity		24 3/4"

### Specifications

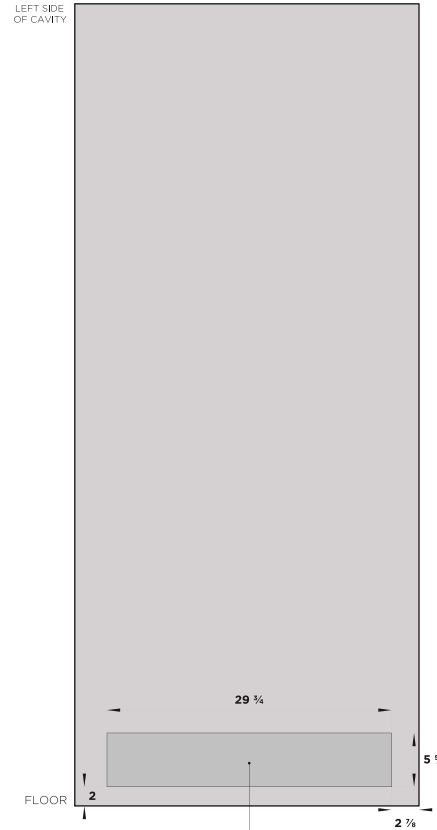
#### Electrical

Supply	115 VAC, 60 Hz
Service	10 amp circuit

#### Plumbing

Supply	1/4" (6mm) comp. stainless steel braided hose
Pressure	min 22 psi (150 kPa) max 120 psi (827 kPa) @ 68°F (20°C)

NOTE: Electrical connection can be located an adjacent cabinet to either side of the fridge or above the fridge cavity.



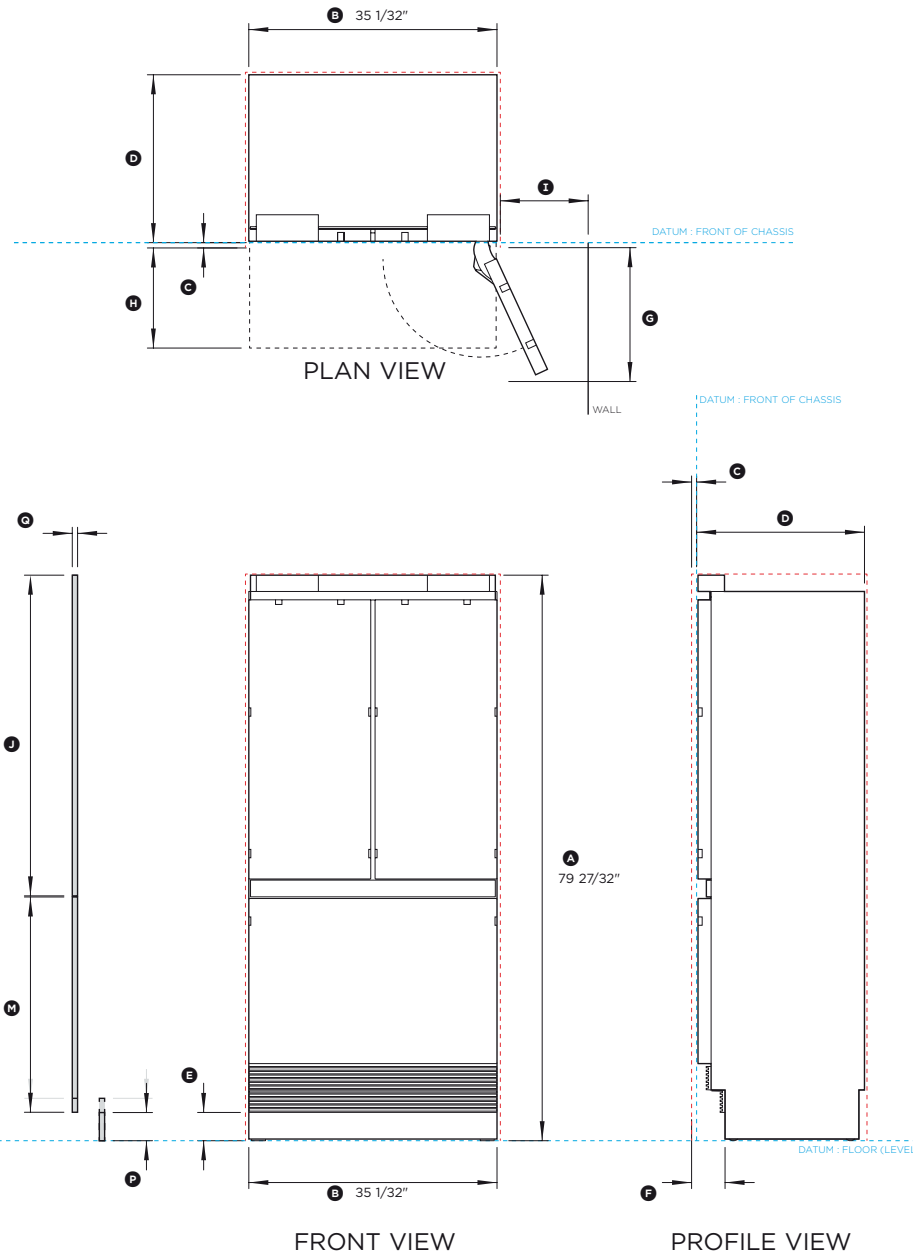
REAR OF CAVITY

IMPORTANT NOTE: The product dimensions and specifications apply at the date of issue. Under our policy of continuous product improvement, these dimensions and specifications may change at any time. Dimensions may vary by  $\pm 3/32"$ . Please read the installation manual for detailed information on installing the product or visit [fisherpaykel.com](http://fisherpaykel.com).

**Fisher & Paykel**

**DATA SHEET**

**36" ACTIVESMART™ BUILT-IN REFRIGERATOR**



Model no:

**RS36A80J1**

Product Dimensions	in
Ⓐ Overall height of fridge	79 27/32"
Ⓑ Overall width of fridge	35 1/32"
Ⓒ Depth of fridge front panels (excl. handles)*	3/4"
Ⓓ Overall depth of fridge (excl. front door panels)	23 3/4"
Ⓔ Height from bottom datum to top of toe kick	4"
Ⓕ Depth of toe kick measured from front of door panels*	4 3/4"
Ⓖ Depth of door (widest opening) measured from front of cabinetry	18 29/32"
Ⓗ Depth of drawer (open) measured from front of cabinetry*	14 3/16"
Ⓘ Minimum door clearance** to adjacent wall (115° - full internal access)*	12 13/32"

\* Door panels to be manufactured and fitted by cabinetmaker, thickness min 5/8" - max 3/4".

\*\* Measured from front cabinetry edge.

Custom Panel Dimensions	in
Ⓛ Height of top door panel	45 9/32"
Ⓚ Width of top door panel	17 3/4"
Ⓛ Gap between top door panels	5/32"
Ⓜ Height of bottom drawer panel	28 13/32"- 30 13/32"
Ⓝ Width of bottom drawer panel	35 21/32"
Ⓞ Gap between top door panels and bottom drawer panel	5/32"
Ⓟ Height of toe kick panel*	4" - 6"
Ⓠ Depth of custom panels	min 5/8" max 3/4"
Maximum weight of an individual top door panel	22 pounds
Maximum weight of bottom drawer panel	21 pounds

\* The bottom grille can be reduced to allow for a higher toe kick. Adjust the height of the bottom drawer panel accordingly.

Minimum Clearances	in
Minimum cabinetry gap clearance from edge of custom panels	5/32"
Overall height of cavity	80"
Overall width of cavity	36"
Overall depth of cavity	24 3/4"

INDICATES PRODUCT DATUM - - - - -  
INDICATES MINIMUM CABINETRY CLEARANCES - - - - -

IMPORTANT NOTE: The product dimensions and specifications apply at the date of issue. Under our policy of continuous product improvement, these dimensions and specifications may change at any time. Dimensions may vary by ±3/32". Please read the installation manual for detailed information on installing the product or visit fisherpaykel.com.