

IW-24



FEATURES

- Custom front panel and hardware allow for infinite design options.
- Dual evaporators for constant, moderate humidity so corks don't dry out
- Two independent temperature zones hold reds and whites at proper serving temperature
- Bronze-tinted, UV-resistant glass protects against light exposure
- Soft-on LED lighting illuminates gradually
- Home security system connection
- Wine racks accommodate 750 ml bottles, half-bottles and magnums.
- Intuitive touch control panel keeps temps within one degree of set point
- Rigorously tested in our U.S. manufacturing facilities to ensure decades of use
- Exceptional 24/7 support from Madison, WI-based Customer Care team
- Star-K compliant with installation of a harness kit.
- Illuminated display rack for prized bottles of wine.
- Full-extension, easy-glide racks provide access without agitating wine
- New inventory tiles system lets you label wine racks for easy ID

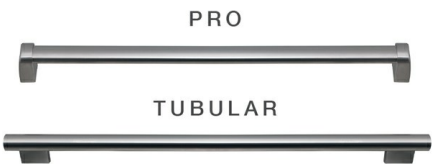
ACCESSORIES

- 24" Bulk Storage Drawer
- Dessert Wine Rack
- Door Lock Kit
- Dual Installation Kit Handle to Hinge
- Dual Installation Kit Hinge to Handle
- Dual Installation Kit Hinge to Hinge
- Wine inventory tiles
- Wine inventory tiles-writable
- Stainless steel front panels with tubular or pro handles
- Reduced toe kick divider for toe kicks from 3.875" to 2"
- Side enclosure
- Top enclosure
- Solid overlay door
- Stainless steel pro handles
- Stainless steel tubular handles

Accessories are available through an authorized Sub-Zero dealer.  
For local dealer information, visit [subzero-wolf.com/locator](http://subzero-wolf.com/locator).



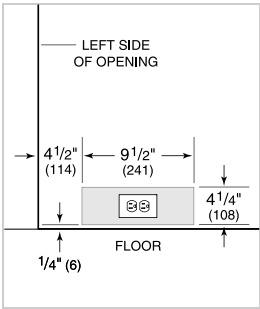
HANDLE ACCESSORIES



PRODUCT SPECIFICATIONS

Model	IW-24
Dimensions	24"W x 84"H x 24"D
Door Clearance	22 1/2"
Weight	410 lbs
Electrical Supply	115 VAC, 60 Hz
Electrical Service	15 amp dedicated circuit
Wine Storage Capacity	102 Bottles
Receptacle	3-prong grounding-type

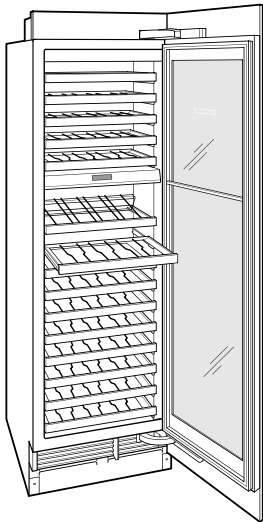
ELECTRICAL



NOTE:

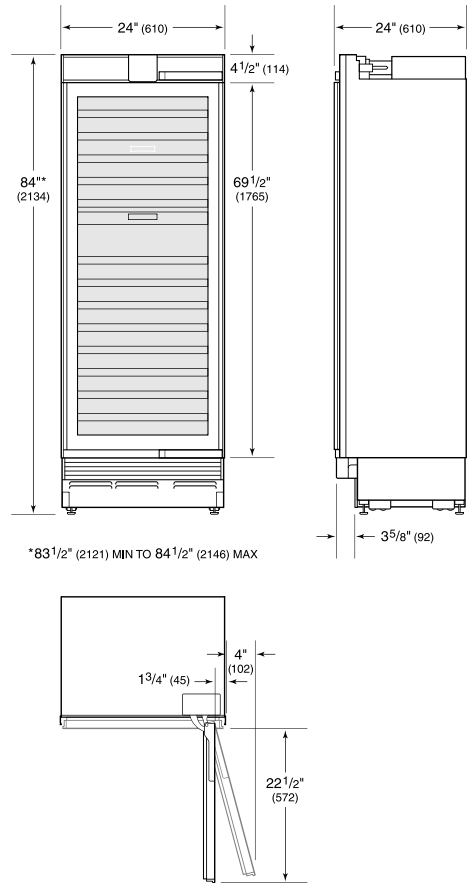
Dimensions in parenthesis are in millimeters unless otherwise specified

INTERIOR VIEW

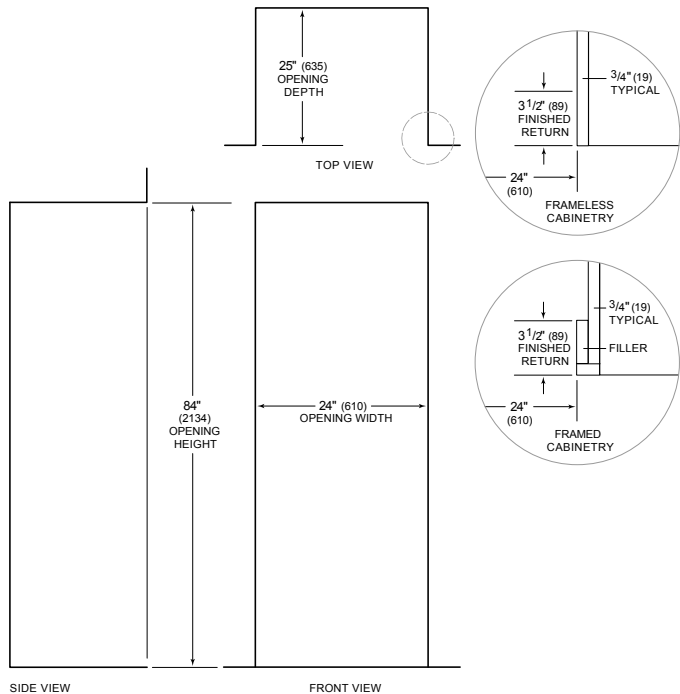


This illustration is intended for interior reference only and may not represent the exterior of the model being specified.

DIMENSIONS



STANDARD INSTALLATION



NOTE: 3 1/2" (89) finished returns will be visible and should be finished to match cabinetry