



\*Record Puck PRO sold separately  
\*Mini XLR cable sold separately

# Debut PRO B

Balanced Mini XLR Output, Pick it PRO Balanced MM Cartridge

Satin: 

- Pre-adjusted Pick it PRO Balanced MM cartridge
- Mini XLR balanced phono output
- 8.6" one-piece carbon/aluminum armtube
- Precision aluminum platter with TPE damping
- Fully adjustable VTA
- Nickel-plated aluminum bearing block
- Motor suspension with improved damping
- Height-adjustable TPE-damped metal feet
- Electronic speed change with toggle switch
- Precise belt drive w/ electronic speed regulation
- 8-coat hand-painted satin black MDF chassis
- Semi-symmetrical RCA/ground phono cable
- Gold-plated female RCA jacks
- Dust cover with hinges included
- Handmade in Europe

**Speed:** 33/45(78)rpm (electronic speed change)  
**Drive principle:** belt drive (electronic speed regulation)  
**Platter:** 300mm die-cast aluminum platter with TPE damping ring (felt mat included)  
**Platter bearing:** high-precision stainless steel axle in bronze bushing  
**Wow & flutter:** +/-0.16% (33rpm), +/-0.14% (45rpm)  
**Speed drift:** +/-0.40% (33rpm), +/-0.50% (45rpm)  
**Signal to noise:** 68dB  
**Tonearm:** 8.6" one-piece carbon/aluminum armtube  
**Effective arm length/mass:** 218.5mm / 10g  
**Overhang:** 18.5mm  
**Included accessories:** 15V DC / 0.8A power supply, dust cover, 78rpm round belt, 7" singles adapter  
**Dimensions (WxHxD):** 415 x 113 x 320mm  
**Dimensions (standard):** 16.34 x 4.45 x 12.6"  
**Mass (Weight):** 6kg (13.23 lbs) net



### 8.6" Carbon/Aluminum Armtube

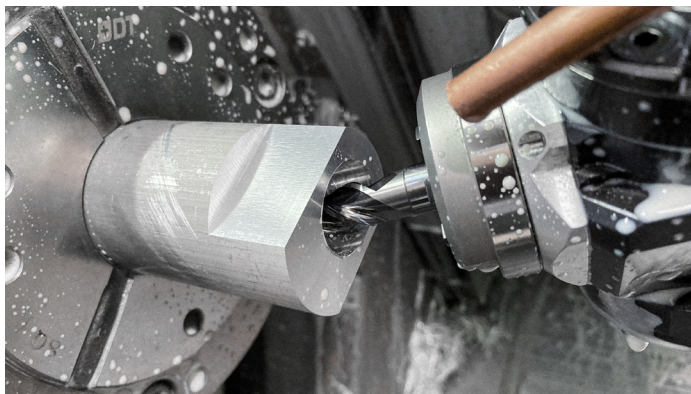
The Debut PRO B features a one-piece armtube precision-machined from aluminum & wrapped in carbon fiber. The carbon layer increases rigidity while the inner aluminum tube lends additional mass & damping.

This super-stiff, uniquely-damped tonearm construction ensures meticulously accurate tracking of the record groove.

### Adjustable VTA & Azimuth

Debut PRO B's tonearm allows for adjustment of both azimuth & vertical tracking angle (VTA). The tonearm height can be continuously adjusted by loosening the two grub screws at the rear of the collar (and re-tightening them when desired height is reached!).

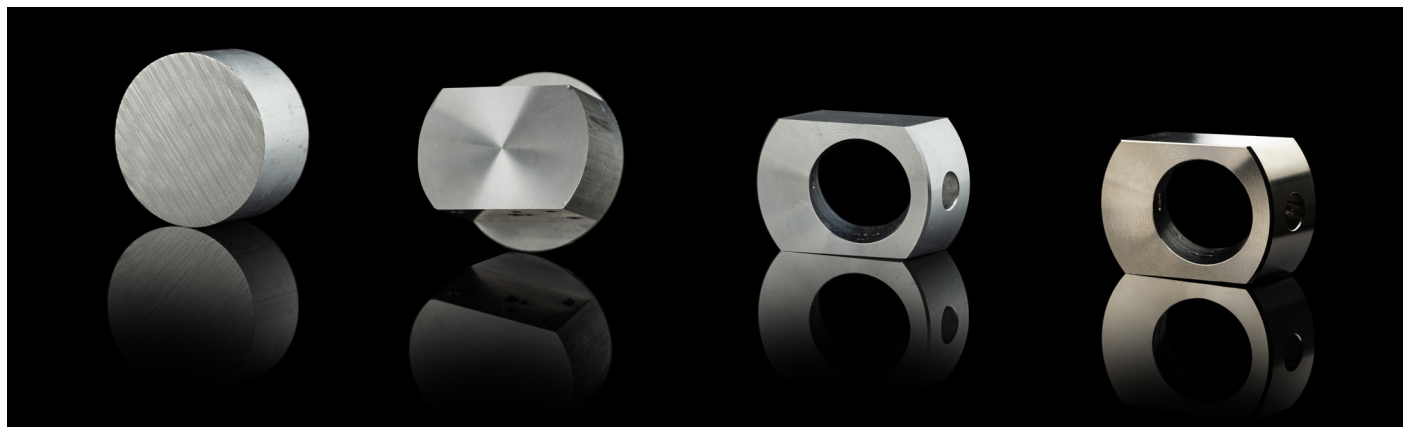
This flexibility gives you the option of adapting the tonearm height should you want to explore various record mats and/or phono cartridges.



### Nickel-Plated Aluminum Parts

The nickel finish of the aluminum components results in harder, less resonant surfaces that look great. This process enables us to produce very high-quality and sustainable components. We avoid plastics and similarly 'cheap' materials as much as possible.

The precision-CNC-machined components are aesthetically matched, and culminate in Debut PRO B's simple, modern & elegant visual appeal.



### Electronic Speed Change & Regulation

Platter speed is controlled electronically with the utmost precision & stability. Easily change between 33 & 45rpm with the toggle switch. With the supplied round belt for 78rpm, you can also enjoy shellac discs.

To prevent motor vibration from reaching the cartridge, Debut PRO B uses the latest motor suspension responsible for excellent decoupling of the motor from the plinth.



### TPE-Damped Die-Cast Platter

The 1.7kg (3.75lbs) die-cast aluminum platter is precision balanced with additional machining after casting. This facilitates perfect platter rotation while playing records.

The heavy aluminum platter also adds a TPE (thermoplastic elastomer) damping ring & corresponding cutout on the underside, muting any resonance created by the metal record platter and contributing to the flywheel effect.





## True Balanced!

The Pro-Ject Pick it PRO Balanced cartridge allows for "True Balanced" signal transmission. A revised version of the Pick it PRO, we re-route the grounding so that it sends a symmetrical signal. The big advantage of a balanced connection is its ability to remove accrued noise and interference from the transmission line.

Additionally, our "True Balanced" cable range offers several options for connecting your Debut PRO B to our Phono Box S3 B, Phono Box DS3 B or our Tube Box DS3 B phono stages.



**Phono Box S3 B**



**Phono Box DS3 B**



**Tube Box DS3 B**

## High-Quality RCA/Ground Cables

Cables cannot add any information back to a given signal, rather, they're responsible for allowing as much musical information as possible through to the receiving device. This is why we include our Connect it Phono E RCA cable. Optimized for phono applications, we've implemented quality metals & careful configuration to ensure lossless signal transmission.

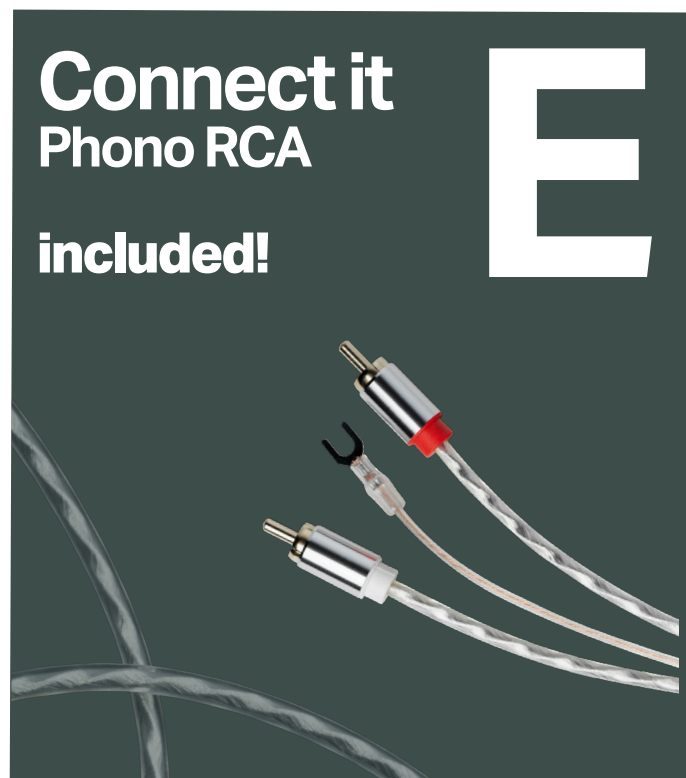
### Upgrade to TRUE BALANCED



True Balanced operation is attainable with the following cable types:

- Mini XLR > Mini XLR
- Mini XLR > XLR
- RCA > Mini XLR

***EXPLORE CABLES HERE***

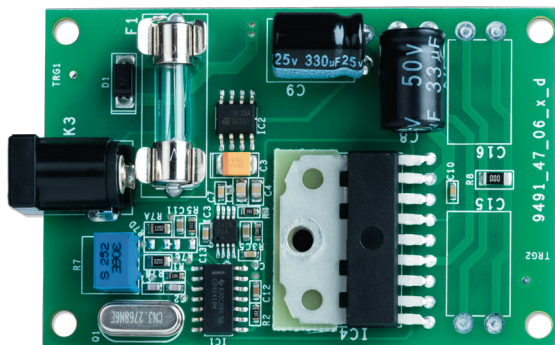




## Sophisticated DC/AC Power Generator

Our turntables use switch-mode power supplies for good reason. They take the unrefined AC power from your wall and convert it to DC. That DC power is then fed to DC/AC generator within the turntable, which in turn powers the AC motor.

The advantage is that a completely new sine wave is created by the generator, fully decoupling your turntable from the dirty AC power coming from your outlet. This amounts to steady power being fed to the motor thereby enhancing speed stability.



## Two Upgrades in One Box!

Clean & stable power is critical for phono setups. The included power supply is a great starting point but you can take it further.

Power Box S3 Phono provides power for the Debut PRO B (15V) as well as your Pro-Ject phono stage (18V). Its two outputs are specifically engineered to power Pro-Ject turntables and phono preamps simultaneously. The sophisticated DC filtration can have a dramatic impact on overall sound quality.

In addition to the sonic improvements, Power Box S3 Phono also offers users a cleaner cable solution (only one wall-wart needed for the PSU).

