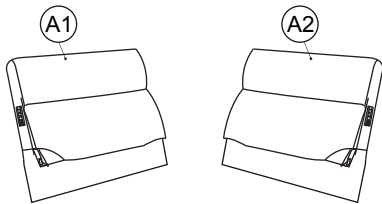


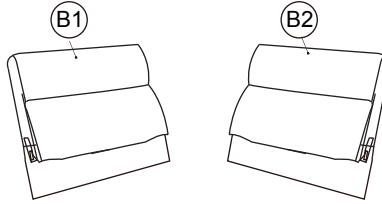
CALGARY SECTIONAL

ASSEMBLY INSTRUCTIONS

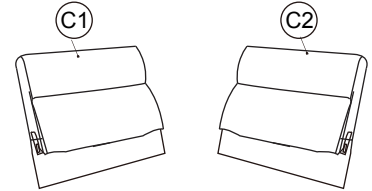
Ax2



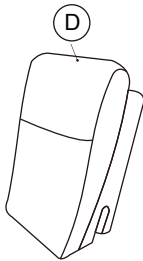
Bx2



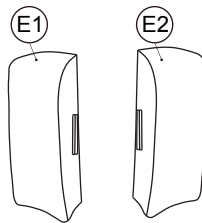
Cx2



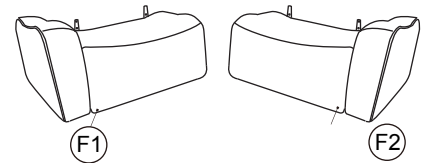
Dx1



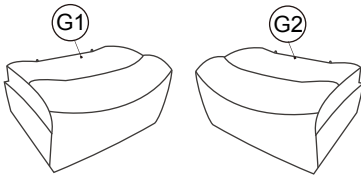
Ex2



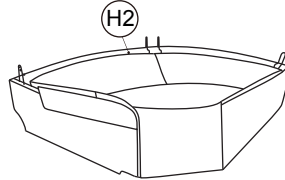
Fx2



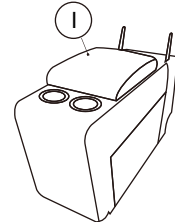
Gx2



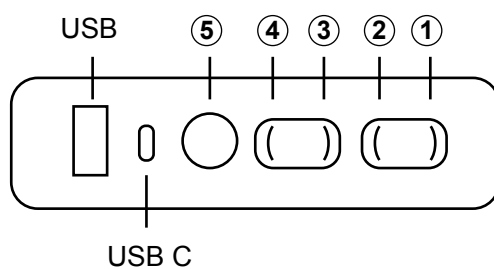
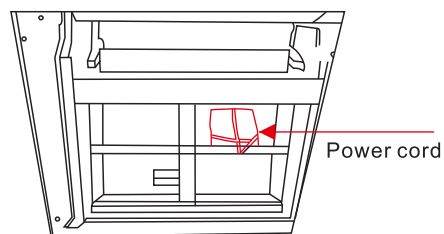
Hx1



Ix1



Untie the power cord before removing the product from the carton.

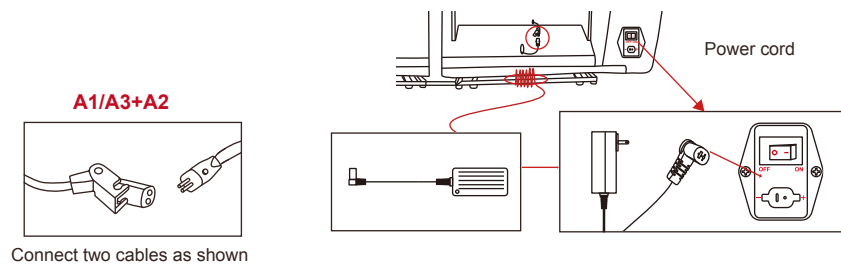
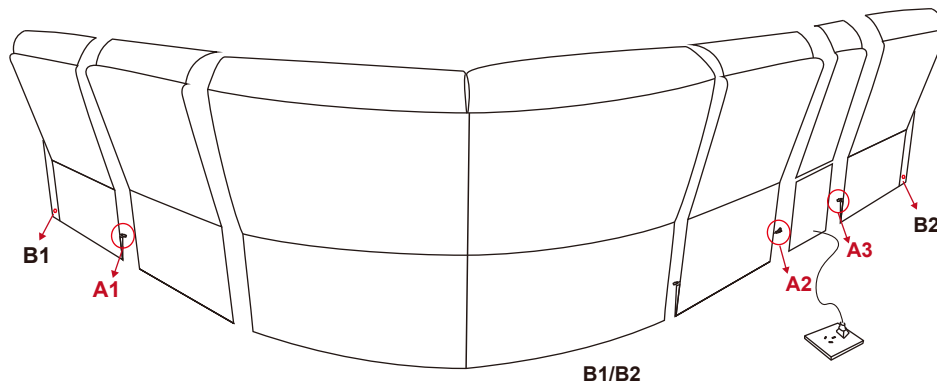
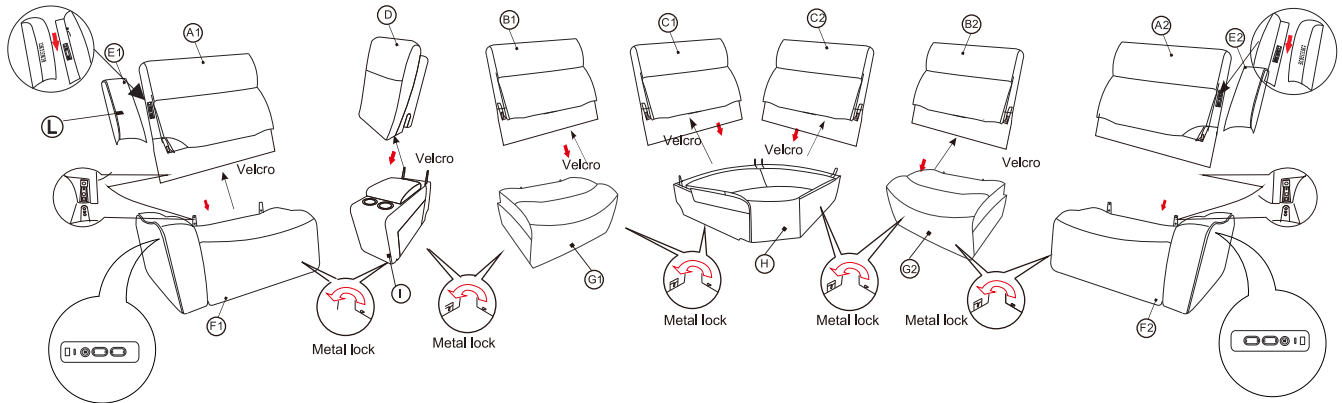


1. Press button **1** Leg Rest Open
2. Press button **2** Leg Rest Close
3. Press button **3** Headrest Forward
4. Press button **4** Headrest Back
5. Home button **5** All close

CALGARY SECTIONAL

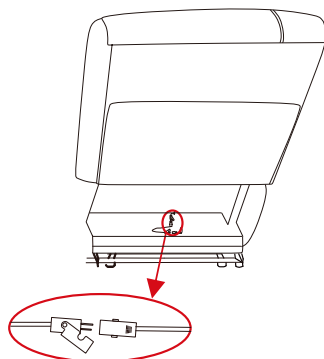
ASSEMBLY INSTRUCTIONS

Connecting parts.



For the Power Armless
Recliner
Connecting power cord

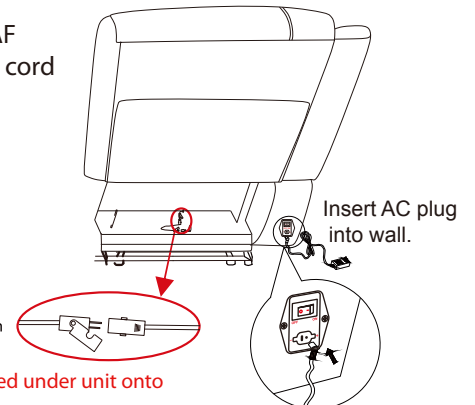
Connect two cables as shown



*Power cord is packed and tied under unit onto
mechanism in red bag.

For the LAF and RAF
Connecting power cord

Connect two cables as shown



*Power cord is packed and tied under unit onto
mechanism in red bag.

Insert power cord
into port behind unit.