

36" Built-In Bottom-Freezer



Benchmark® Series – Stainless Steel B36BT130NS



B36BT130NS
Stainless Steel

Also available in:

Custom Panel
B36IT100NP

The Benchmark 36" stainless steel built-in refrigerator, redesigned with premium metal interior, keeps food fresh longer and has efficient and precise cooling and humidity control.

Features & Benefits

VitaFresh® technology keeps food fresh up to 3x longer* with precise humidity and temperature control, on a full color UI.

Stainless steel backwall and bright LEDs keep the spotlight on your food.

Metal door bins, split shelves and three-tier freezer drawers to help you organize the way you want.

Full width deli drawer can accommodate large charcuterie or veggie platters for when you're ready to serve.

Internal water dispenser with UltraClarityPro® filter removes over 99.9% of impurities.

Dimensions and Weight

Overall width (inches)	35 1/4"
Overall height (inches)	83 9/16" Min. – 85 1/2" Max.
Overall depth with doors and handles (inches)	26 7/8"
Overall depth without doors and handles (inches)	24"
Required cutout size (HxWxD) (inches)	84" x 35 1/2"–36" x 24"
Net /gross weight (approx.) (lbs.)	589 / 630

Style

Door panel style	Stainless Steel
Handle style	Bar Handle
Interior finish	SS Backwall
Number of doors	3

Innovation

Wi-Fi-enabled for control with Home Connect® app	Yes
Remote monitoring and control	Yes
Remote system upgrade	Yes

Performance

VitaFresh®	Yes
Evaporators / Compressors	2 / 2
Quick Ice	Yes
Automatic defrosting	Yes
Modes: Normal, Vacation, Eco, Sabbath, Shopping, Demo, SuperCool, SuperFreeze®	
Internal water dispenser	Yes
One Touch BottleFill	Yes
Water filter (6 months)	Yes
AirFresh® filter	Yes
Ethylene filter (6 months)	Yes

Capacity and Storage

Total capacity (cu. ft.)	20.1
Refrigerator capacity (cu. ft.)	13.2
Freezer capacity (cu. ft.)	6.9
Full-extension freezer storage drawer	Yes
Tiered freezer drawer	3-Tier
Full extension deli drawer	1
Full extension VitaFresh® drawers	2

VitaFresh® drawer modes (°F/humidity): Vegetables (32°F/high), Fruit (32°F/low) Meat (30°F/low), Fish (30°F/low), Deli (34°F/low), Cheese (35°F/low), Beverages (34°F/low), Mixed (32°F/low), Charcuterie (35°F/low)

Door bins	4 Adjustable, 2 Fixed
-----------	-----------------------

General Features

Color touchscreen control panel	Yes
Water filter replacement indicator	Yes
Ice maker	Yes
Ice On / Off	Yes
Ice production (24 hrs.), ice cubes (lbs.)	5.5
Ice storage capacity (lbs.)	6.6
LED interior and drawer lighting	Yes
Independent cooling systems	2
Door alarm	Yes
Childproof lock	Yes
Cooling system	MultiAirFlow™
Maximum sound level	39 dBA
Star-K certified Sabbath mode	TBD



*As compared to a Bosch refrigerator without VitaFresh®. Results may vary among different foods.

Accessories: To purchase Bosch accessories, cleaners & parts please visit www.bosch-home.com/us/store or call 1-800-944-2904 (Mon to Fri 5 am to 6 pm PST, Sat 6 am to 3 pm PST).

Notes: All height, width and depth dimensions are shown in inches. BSH reserves the absolute and unrestricted right to change product materials and specifications, at any time, without notice. Consult the product's installation instructions for final dimensional data and other details prior to making cutout.

Warranties: Please see Use & Care manual or Bosch website for statement of limited warranty.

For more information on our entire line of products, go to www.bosch-home.com/us or call 1-800-944-2904

© BSH Home Appliances Corporation. All rights reserved. Bosch is a registered trademark of Robert Bosch GmbH.

36" Built-In Bottom-Freezer



Benchmark® Series – Stainless Steel B36BT130NS

Energy Efficiency	
ENERGY STAR® Certified	Yes
Energy consumption (kWh / yr)	599
Operating Temperature	
Refrigerator: 33°F (1°C) to 43°F (6°C)	
Freezer Drawer: -11°F (-24°C) to -6°F (-21°C) to 6°F (-14°C)	
VitaFresh® Drawer: 10 preset modes	
SuperCool: 34°F (1°C) for approx. 8 hours	
SuperFreeze®: -15°F (-26°C) for approx. 8 hrs.	
Installation Features	
Four point front adjustable with 4 wheels	Yes
Attachment method to cabinetry	4 fixation brackets, Fixed at 4 corners of appliance, no visible screws
Front serviceable	Yes
Anti-tip bracket included	Yes
Frame kit included	Yes
Technical Specs	
Required power supply	110-120 V, 60 Hz, 10 Amp Min.
Plug type	120V-3 Prong
Power cord length (in.)	118"
Warranty	
Limited warranty, non-electronic parts (parts only, no labor)	2 Years
Electronic parts (parts only, no labor)	5 Years
Lifetime Limited: Stainless steel door if rust-through occurs (parts only, no labor)	Lifetime

Optional Accessories



BORPLFTR55
Replacement UltraClarityPro® water filter



11037377
Water filter bypass (part no.)

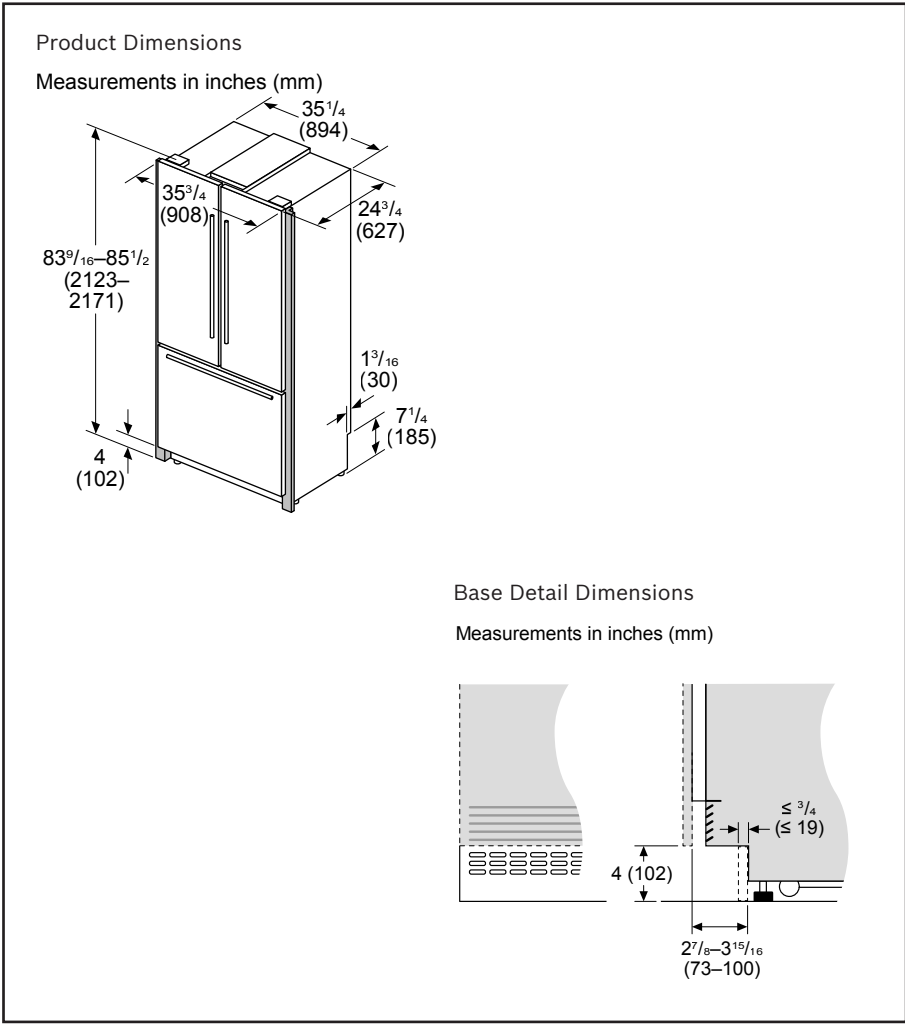


17006999
Replacement ethylene starter kit (part no.)



17007000
Replacement ethylene filter packets (part no.)

Installation Details



Accessories: To purchase Bosch accessories, cleaners & parts please visit www.bosch-home.com/us/store or call 1-800-944-2904 (Mon to Fri 5 am to 6 pm PST, Sat 6 am to 3 pm PST).

Notes: All height, width and depth dimensions are shown in inches. BSH reserves the absolute and unrestricted right to change product materials and specifications, at any time, without notice. Consult the product's installation instructions for final dimensional data and other details prior to making cutout.

Warranties: Please see Use & Care manual or Bosch website for statement of limited warranty.

For more information on our entire line of products, go to www.bosch-home.com/us or call 1-800-944-2904

© BSH Home Appliances Corporation. All rights reserved. Bosch is a registered trademark of Robert Bosch GmbH.

36" Built-In Bottom-Freezer

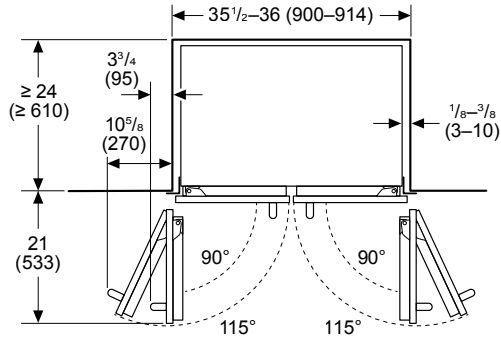


Benchmark® Series – Stainless Steel B36BT130NS

Installation Details

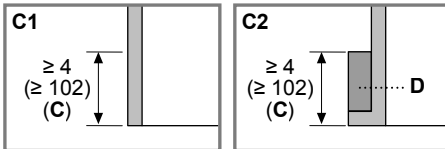
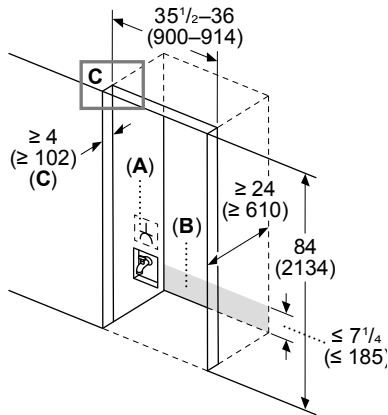
Proud Install Top View Clearance

Measurements in inches (mm)



Proud Install Cutout Dimensions

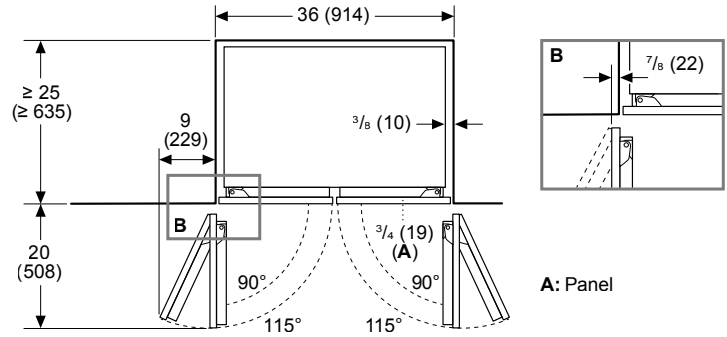
Measurements in inches (mm)



- A: Outlet
- B: Area for water and electric line routing
- C: Furniture return
 - C1: Frameless cabinet
 - C2: Framed cabinet
- D: Filler

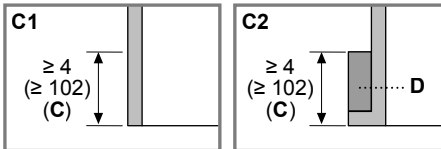
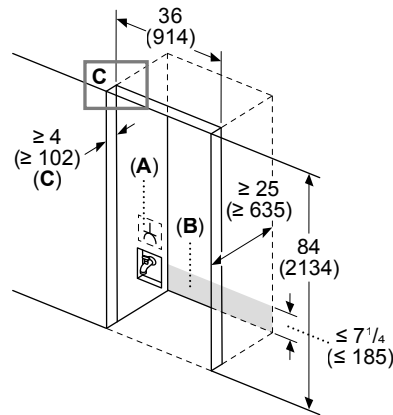
Flush Install Top View Clearance

Measurements in inches (mm)



Flush Install Cutout Dimensions

Measurements in inches (mm)



- A: Outlet
- B: Area for water and electric line routing
- C: Furniture return
 - C1: Frameless cabinet
 - C2: Framed cabinet
- D: Filler

Accessories: To purchase Bosch accessories, cleaners & parts please visit www.bosch-home.com/us/store or call 1-800-944-2904 (Mon to Fri 5 am to 6 pm PST, Sat 6 am to 3 pm PST).

Notes: All height, width and depth dimensions are shown in inches. BSH reserves the absolute and unrestricted right to change product materials and specifications, at any time, without notice. Consult the product's installation instructions for final dimensional data and other details prior to making cutout.

Warranties: Please see Use & Care manual or Bosch website for statement of limited warranty.

For more information on our entire line of products, go to www.bosch-home.com/us or call 1-800-944-2904

© BSH Home Appliances Corporation. All rights reserved. Bosch is a registered trademark of Robert Bosch GmbH.

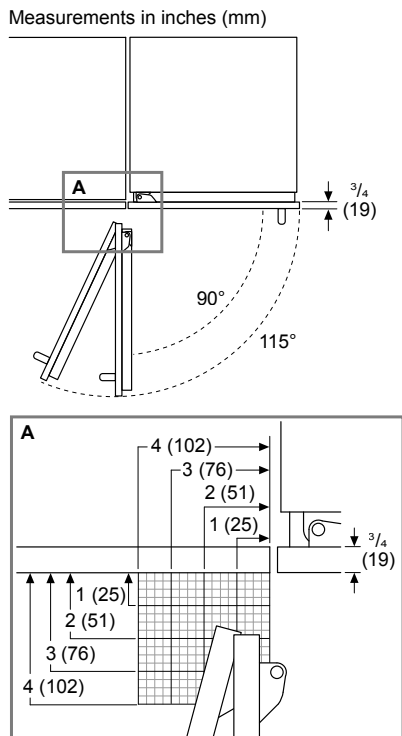
36" Built-In Bottom-Freezer



Benchmark® Series – Stainless Steel B36BT130NS

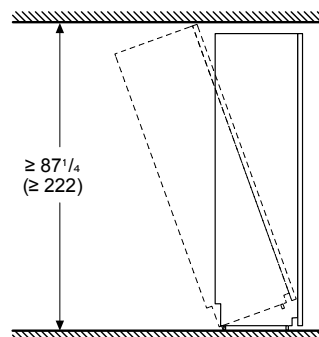
Installation Details

Hinge Clearance

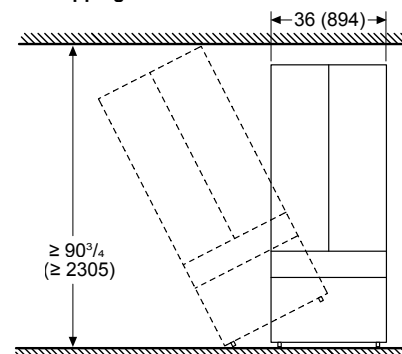


Tipping Radius Clearances

Measurements in inches (mm)
Front tipping radius



Measurements in inches (mm)
Side tipping radius



Accessories: To purchase Bosch accessories, cleaners & parts please visit www.bosch-home.com/us/store or call 1-800-944-2904 (Mon to Fri 5 am to 6 pm PST, Sat 6 am to 3 pm PST).

Notes: All height, width and depth dimensions are shown in inches. BSH reserves the absolute and unrestricted right to change product materials and specifications, at any time, without notice. Consult the product's installation instructions for final dimensional data and other details prior to making cutout.

Warranties: Please see Use & Care manual or Bosch website for statement of limited warranty.

For more information on our entire line of products, go to www.bosch-home.com/us or call 1-800-944-2904

© BSH Home Appliances Corporation. All rights reserved. Bosch is a registered trademark of Robert Bosch GmbH.