

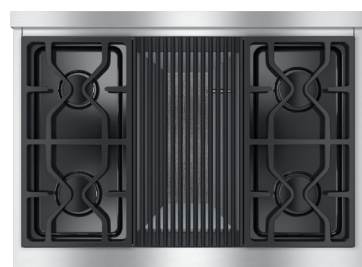
## 36" Rangetop with Grill

KMR 1135 G / KMR 1135 LP



# 36" Rangetop with Grill

## Model: KMR 1135 G / KMR 1135 LP



### KMR 1135 G / KMR 1135 LP

#### Features:

- Backlit percision knobs
- M Pro dual stacked burner system with TrueSimmer
- M Pro Grill
- ComfortClean dishwasher-safe grates
- Clean Touch Steel™ front

#### SPECIFICATIONS

KMR 1135 G — Item 26113550USA

KMR 1135 LP — Item 26113551USA

Overall Unit Width 35<sup>15</sup>/<sub>16</sub>" (913 mm)

Overall Height from the base of the appliance to the top, not including grates 7<sup>1</sup>/<sub>2</sub>" (191 mm)

Overall Unit Depth to the front of control panel 26<sup>1</sup>/<sub>2</sub>" (673 mm)

#### Niché

Minimum Cabinet Width 36" (914 mm)

Minimum Cabinet Depth to back of control panel 25<sup>1</sup>/<sub>16</sub>" (636.6 mm)

Minimum Support Thickness 3/4" (19 mm)

#### Burners (G/LP)

**M Pro Power Plus - Standard Configuration\***

Gas Burners: (1) 12,500 BTU (G/LP); (3) 19,500 BTU (G/LP)

Grill: (1) 19,000 BTU (G); 15,500 BTU (LP)

Total BTU Output 90,000 BTU (G); 86,500 BTU (LP)

#### Gas

Gas Line Connection 1/2" NPT

#### Operational Altitudes

#### High Altitude

Miele Natural Gas and LP Ranges and Rangetops will function up to 9,800 ft. in altitude without adjustment; the following exception will function up to 6,500 ft. in altitude without adjustment:

- Griddle in LP: HR 1136 LP, HR 1936 LP, HR 1956 LP, KMR 1136 LP, KMR 1356 LP
- Grill in G: HR 1135 G, HR 1935 G, HR 1955 G, KMR 1135 G, KMR 1355 G

If an installation exceeds these elevations, please contact [rangejetkit@mieleusa.com](mailto:rangejetkit@mieleusa.com).

#### Electrical

Electrical Requirements 120V, 60Hz, 15 Amps

Power Cord Yes - NEMA 5-15 plug, 4 ft. (1.2 m) long

#### Shipping

Shipping Weight 145.5 lbs. (66 kg)

#### Support

Call 800.843.7231

Miele Website [www.mieleusa.com](http://www.mieleusa.com)

20/20 Link [2020technologies.com](http://2020technologies.com)

#### Optional Accessories:



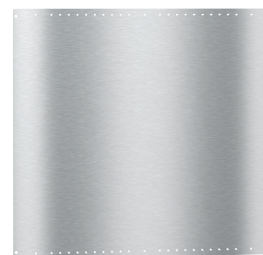
12" Backguard  
RBGAG1236

12" tall high-quality brushed stainless steel Backguard



20" Backguard  
RBGAG2036

20" tall high-quality brushed stainless steel Backguard



40" Backsplash  
RBS36

40" tall flat stainless steel Backsplash panel

\* Please note if a BTU-reducing kit is necessary, an authorized installer is required to modify the product to meet ANSI Z21.

KMR 1135

Page 2 of 6

Specification Sheet TRS 05022016

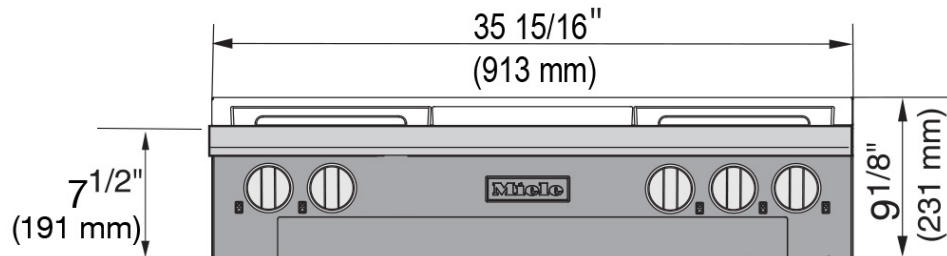
# 36" Rangetop with Grill

## Model: KMR 1135 G / KMR 1135 LP

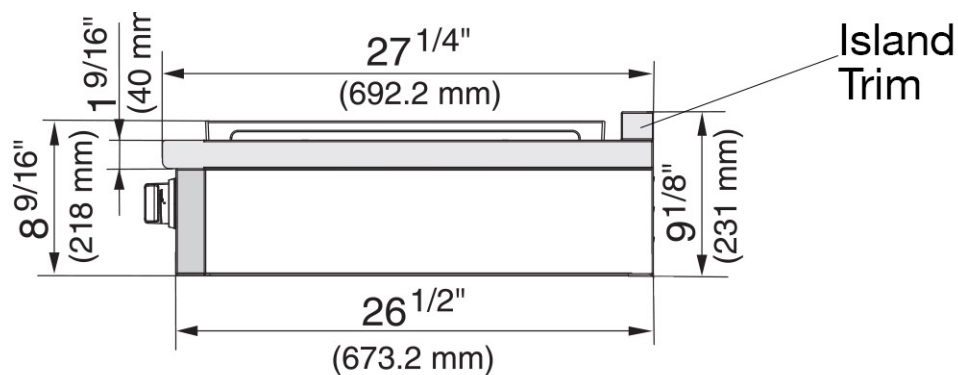


### PRODUCT VIEWS

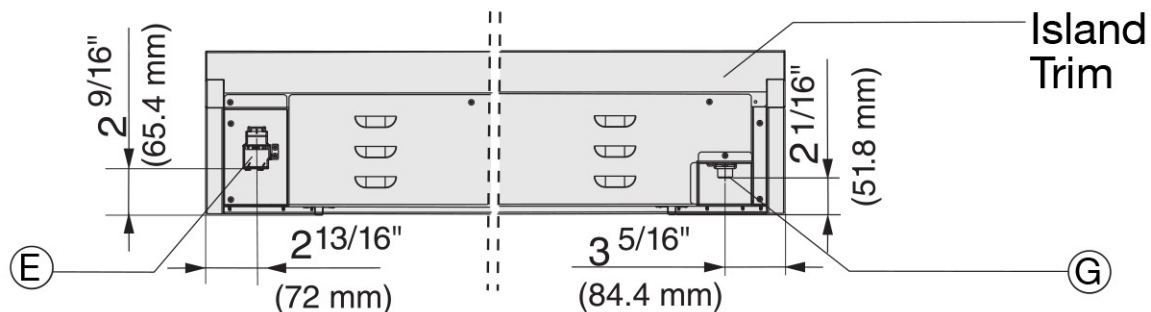
Front View



Side View



Rear View



Length of power cord is 4 ft.(1.2m)

E = Electrical connection

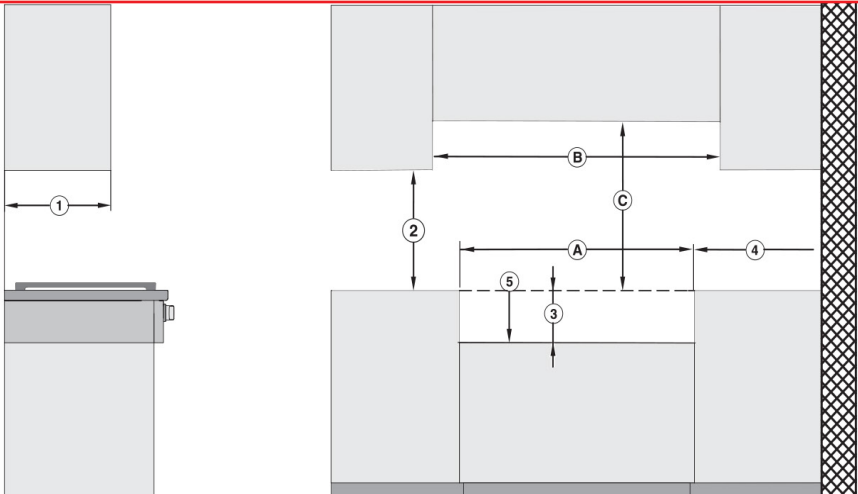
G = Gas connection

36" Rangetop with Grill  
Model: KMR 1135 G / KMR 1135 LP



M Pro Power Plus  
Configuration

Standard Configuration with Pro  
Hood\*



Ⓑ In case of combustible construction, an additional minimum clearance of 6" (150 mm) on each side is necessary. Ensure local codes are observed.

M Pro Power Plus SPECIFICATIONS	
Burners (G/LP)	
Gas Burners:	(1) 12,500 BTU (G/LP); (3) 19,500 BTU (G/LP)
Grill:	(1) 19,000 BTU (G); (1) 15,500 BTU (LP)
Total BTU Output	90,000 BTU (G); 86,500 BTU (LP)

Position	Dimensions	Description
①	13" (330 mm)	Maximum depth of top cabinet
②	18" (457 mm)	Minimum distance to bottom edge of top cabinet
③	7 1/2" (190.5 mm)	Distance between the top edge of the countertop and the top edge of the support base
④	10" (254 mm)	Minimum distance to combustible surfaces
⑤		Support base <sup>1)</sup>
Ⓐ	min. 36" (914 mm)	Width of cabinet opening
Ⓑ	6" + Ⓐ + 6" (150 mm + Ⓐ + 150 mm)	If combustible materials are present, an additional minimum distance of 6" (150 mm) (each side) is required. Make sure that the local codes are observed.
Ⓒ	37" (940 mm)	Minimum distance between the top of the cooking area and the bottom of an unprotected combustible surface.
	30" (762 mm)	Minimum distance between the top of the cooking area and the bottom of the Miele rangehood (DAR model with DRxB XL blower or DRxB XXL blower).
	For all other rangehoods, please consult the manufacturers specifications for required distances.	

1) The support base must have a minimum thickness of 3/4" (19.05 mm). At the rear right of the support base, a cut-out of 5 1/8" x 7 1/8" (130 mm x 80 mm) (gas connection) is provided, and, at the rear left, a cut-out of 4 6/8" x 1 9/16" (120 mm x 40 mm) (electrical connection).

\* Please note if a BTU-reducing kit is necessary, an authorized installer is required to modify the product to meet ANSI Z21.

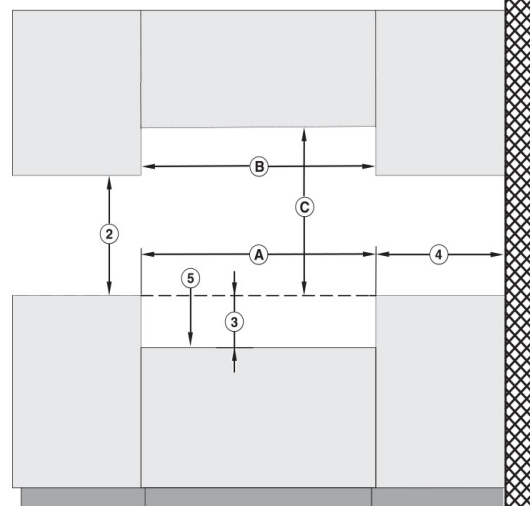
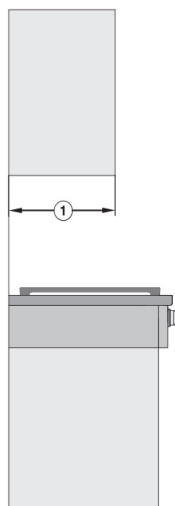
# 36" Rangetop with Grill

## Model: KMR 1135 G / KMR 1135 LP



### M Pro Power Configuration

Seamless Configuration with Pro Hood (Zero Gap)



M Pro Power SPECIFICATIONS	
Burners (G/LP)	
Gas Burners:	(1) 10,000 BTU (G/LP); (3) 14,700 BTU (G/LP)
Grill:	(1) 19,000 BTU (G); (1) 15,500 BTU (LP)
Total BTU Output	73,000 BTU (G); 69,600 BTU (LP)

**Jets are a standard accessory and are changed during installation**

Position	Dimensions	Description
①	13" (330 mm)	Maximum depth of top cabinet
②	18" (457 mm)	Minimum distance to bottom edge of top cabinet
③	7 <sup>1</sup> / <sub>2</sub> " (190.5 mm)	Distance between the top edge of the countertop and the top edge of the support base
④	10" (254 mm)	Minimum distance to combustible surfaces
⑤		Support base <sup>1)</sup>
Ⓐ	min. 36" (914 mm)	Width of cabinet opening
Ⓑ	min. 36" (914 mm)	Width of cabinet opening Please contact Miele Service for more information.
Ⓒ	37" (940 mm)	Minimum distance between the top of the cooking area and the bottom of an unprotected combustible surface.
	30" (762 mm)	Minimum distance between the top of the cooking area and the bottom of the Miele rangehood (DAR model with DRxB XL blower or DRxB XXL blower).
	For all other rangehoods, please consult the manufacturers specifications for required distances.	

1) The support base must have a minimum thickness of <sup>3</sup>/<sub>4</sub>" (19.05 mm).  
At the rear right of the support base, a cut-out of 5 1/8" x 7 1/8" (130 mm x 80 mm) (gas connection) is provided, and, at the rear left, a cut-out of 4 6/8" x 1 9/16" (120 mm x 40 mm) (electrical connection).

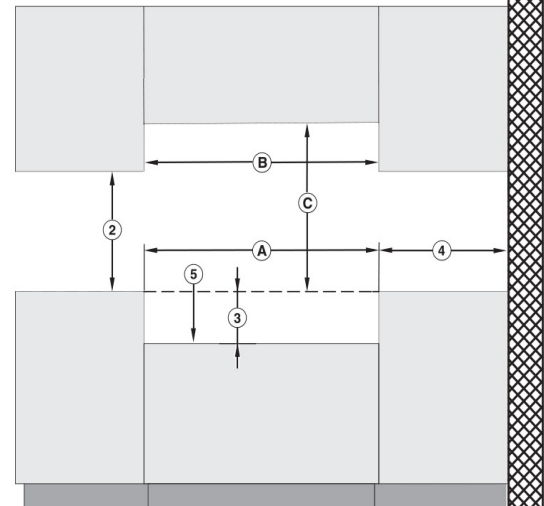
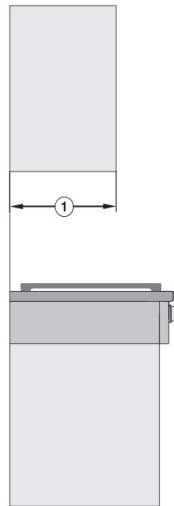
# 36" Rangetop with Grill

## Model: KMR 1135 G / KMR 1135 LP



### M Pro Configuration

Seamless Configuration with  
Non-Pro Hood (Décor)



M Pro SPECIFICATIONS	
Burners (G/LP)	
Gas Burners:	(1) 10,000 BTU (G/LP); (3) 12,200 BTU (G/LP)
Grill:	(1) 19,000 BTU (G); (1) 15,500 BTU (LP)
Total BTU Output	65,500 BTU (G); 62,100 BTU (LP)

**Jets are a standard accessory and are changed during installation**

Position	Dimensions	Description
①	13" (330 mm)	Maximum depth of top cabinet
②	18" (457 mm)	Minimum distance to bottom edge of top cabinet
③	7 <sup>1</sup> / <sub>2</sub> " (190.5 mm)	Distance between the top edge of the countertop and the top edge of the support base
④	10" (254 mm)	Minimum distance to combustible surfaces
⑤		Support base <sup>1)</sup>
Ⓐ	min. 36" (914 mm)	Width of cabinet opening
Ⓑ	min. 36" (914 mm)	Width of cabinet opening Please contact Miele Service for more information.
Ⓒ	Please refer to Miele ventilation hood installation manual, Appliance Dimensions section ( <b>Distance between cooktop and hood (S)</b> ) For all other rangehoods, please consult the manufacturers specifications for required distances.	

1) The support base must have a minimum thickness of <sup>3</sup>/<sub>4</sub>" (19.05 mm).  
At the rear right of the support base, a cut-out of 5 1/8" x 7 1/8" (130 mm x 80 mm) (gas connection) is provided, and, at the rear left, a cut-out of 4 6/8" x 1 9/16" (120 mm x 40 mm) (electrical connection).