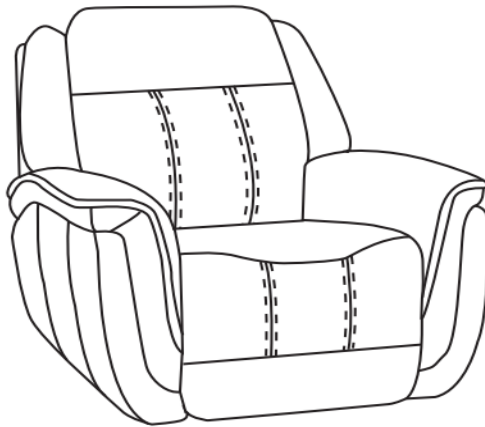


FLEXSTEEL®

Flexsteel Power Recliner with Power Headrest



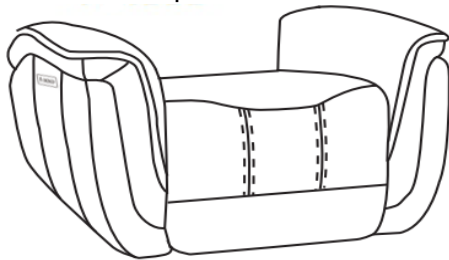
IMPORTANT NOTE

Read these instructions carefully, and familiarize yourself with each procedure before assembling the furniture. Check that you have all the component parts, and familiarize yourself with each part before proceeding.

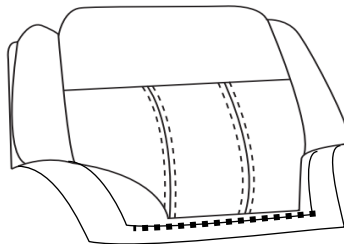
Take all the fittings out of the plastic bags and separate them into groups. Ensure you have enough space to lay out all the parts before assembly. To prevent damage to the parts, we recommend that you assemble the units on a soft, level surface.

LIST OF PARTS

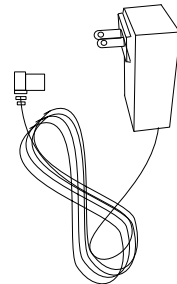
A. Seat Cushion
1 piece



B. Back Cushion
1 piece

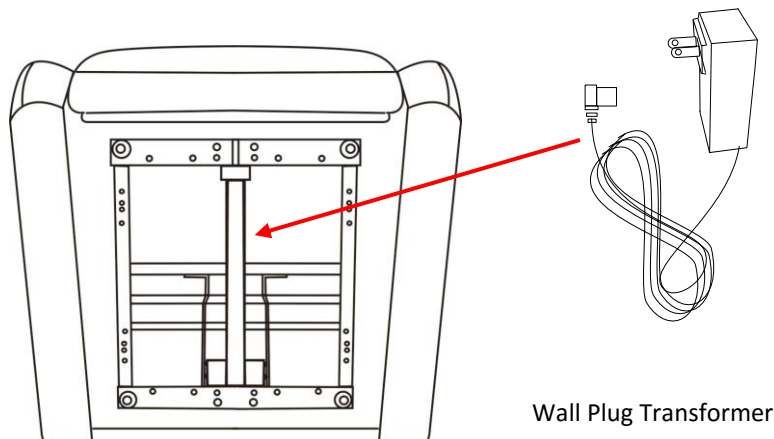


C. Wall Plug Transformer
1 piece



Assembly Instructions 1/3

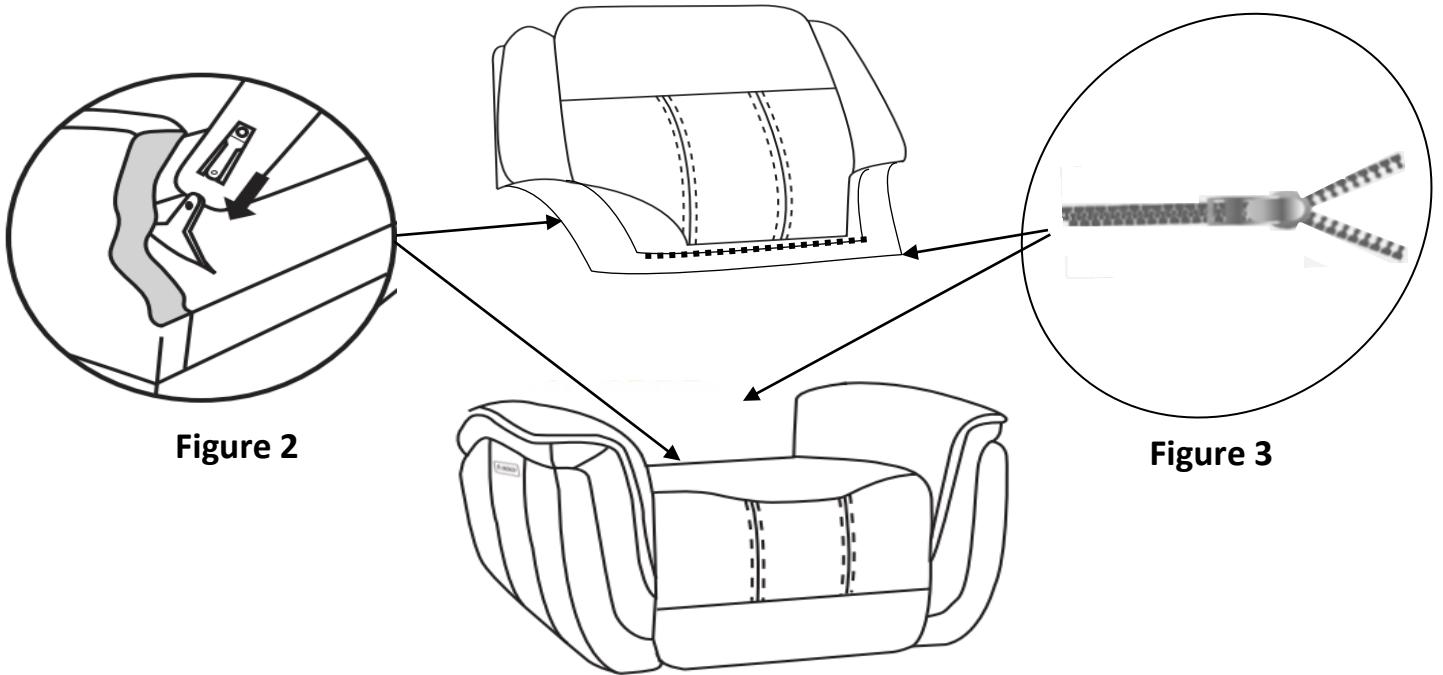
STEP 1 : Detach the wall plug transformer from the bottom of Seat (A).



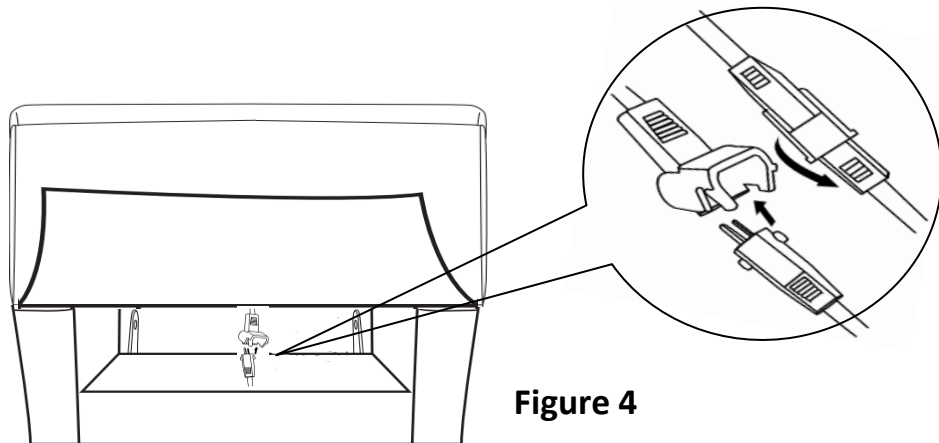
Assembly Instructions 2/3

STEP 2 : Attach the Back (B) to the Seat (A). Ensure the

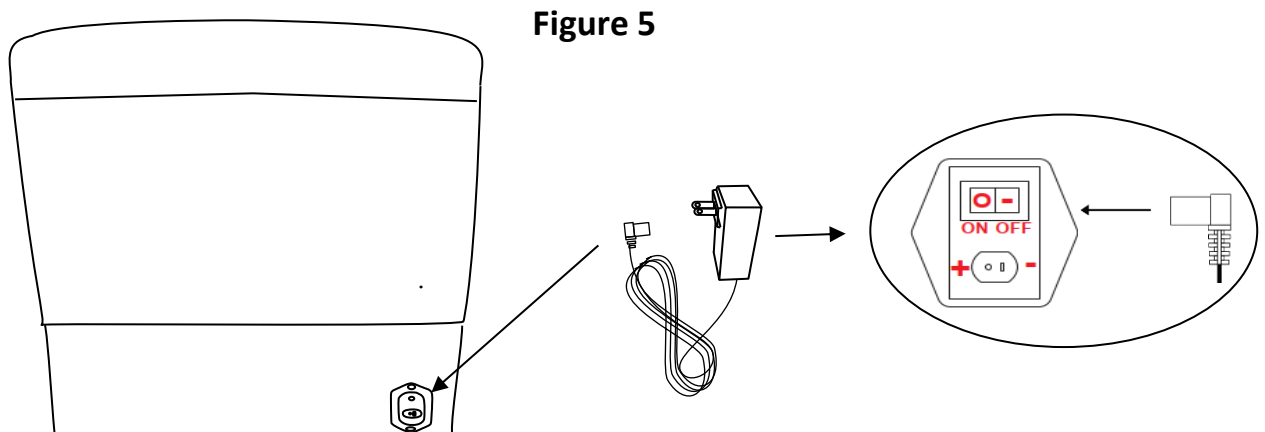
STEP 3: Zip the front flap of the LAF/ RAF Back cushions to the Seat. (See Figure 3.)



STEP 4: Flip up the back flaps, Plug the headrest/ lumbar connectors at the middle bottom from the Back and Seat. Make sure to close the clip lock to prevent the connection from coming loose. (See Figure 4.)

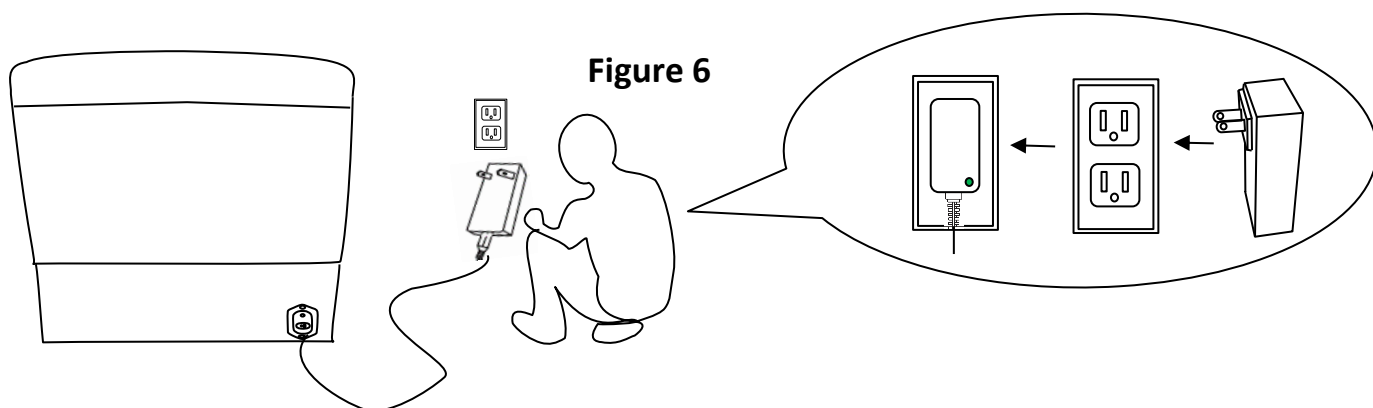


STEP 5: Attach the power transformer cord to the matching Plug found at the bottom rear of the loveseat as seen below. Ensure the transformer power switch is switched to the "ON " position. (See Figure 5.)



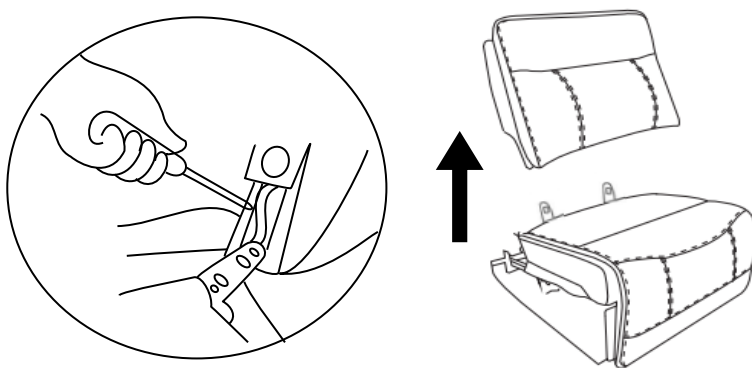
Assembly Instructions 3/3

STEP 6: Fasten the back flap to the bottom of the furniture to complete assembly. Then connect wall plug transformer into a nearby outlet, still making sure it is clear of the metal base. (See the Figure 6.)



Disassembly Instructions

To remove the back from the base, use a screwdriver pressing outward on the black tab in the metal receivers on both sides of the chair back and lift the back from the base of the chair to release.



CARE INSTRUCTION

- To avoid any risk of suffocation to children or pets, dispose of all plastic bags immediately.
- To ensure proper performance, occasionally check for loose screws and tighten as needed.
- If the reclining functions are not working properly, check for loose cable connections before contacting the retailer.