



(http://www.monarchspec.com/en/find_a_store/)



(http://www.monarchspec.com/en/find_a_store/)

DESCRIPTION

ACCENT TABLE - 26"H / BLACK MARBLE / BLACK METAL
SKU# **I 3595**



(<http://www.monarchspec.com/pub/media/catalog/pro>)

(http://www.monarchspec.com/pub/media/catalog/product/i/i_3595!f1.jpg)



(<http://www.monarchspec.com/en/>)

SKU#: **I 3597**

ACCENT TABLE

26"H / DARK TAUPE / BLACK METAL

(<http://www.monarchspec.com/en/>)



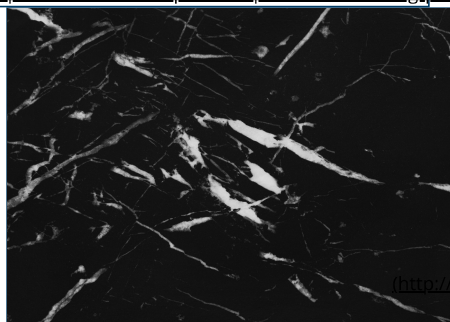
(<http://www.monarchspec.com/en/>)

SKU#: **I 3598**

ACCENT TABLE

26"H / ESPRESSO / BLACK METAL

(<http://www.monarchspec.com/en/>)



(<http://www.monarchspec.com/pub/media/catalog/>)

(http://www.monarchspec.com/pub/media/catalog/product/i/i_3595!s1.jpg)

[Assembly Instructions](#)

[Details](#)

[More Information](#)

ACCENT TABLE - 26"H / BLACK MARBLE / BLACK METAL
SKU **I 3595**

ASSEMBLED PRODUCT - DEPTH / WIDTH: 18

ASSEMBLED PRODUCT - HEIGHT: 26

ASSEMBLED PRODUCT - LENGTH: 18

ASSEMBLED PRODUCT - WEIGHT / LBS: 22

ASSEMBLY TIME: 40

BOX (SHIPPING CARTONS QTY): 1

BOX 1 - CUBE: 1.2

BOX 1 - DEPTH / WIDTH: 19

LEG 1 - HEIGHT: 25.5

LEG 1 - LENGTH: 0.75

LEGS - FINISH: BLACK

LEGS 1 - INCLUDED (QTY): 4

MATERIAL: METAL


MATERIAL - 2: PARTICLE BOARD


PACKAGING MATERIAL WEIGHT: 2


PRODUCT TYPE: ACCENT TABLE, NIGHT STAND


BOX 1 - HEIGHT: 4**BOX 1 - LENGTH:** 26.5**BOX 1 - WEIGHT / LBS:** 24**BOX 1 UPC CODE:** 680796051914**COLOR:** BLACK**COUNTRY OF PRIMARY WOOD MILL:** CHINA**DEPARTMENT - 1:** ACCENTS**DEPARTMENT - 2:** BEDROOM**FINISH ATTRIBUTES:** MARBLE-LOOK**LEG 1 - DEPTH / WIDTH:** 0.75**SHELF 1 - DEPTH / WIDTH:** 17.5**SHELF 1 - HEIGHT:** 10.25**SHELF 1 - LENGTH:** 15.75**SHELF MAXIMUM WEIGHT CAPACITY:** 10**SHELF THICKNESS:** 0.5**SHELVES QTY:** 2**STYLE:** CONTEMPORARY, GLAM, MODERN**WEIGHT CAPACITY:** 30**WOOD PERCENTAGE (%):** 60


CORPORATE ADDRESS

 4155 Autoroute Chomedey
Laval, Quebec, Canada H7P 0A8

 info@monarchspeak.com (<mailto:info@monarchspeak.com>)

 450.628.4488

 800.667.7954

 450.628.3888

HOW CAN WE HELP?

[CUSTOMER SERVICE](http://www.monarchservice.com) (<http://www.monarchservice.com>)

[DISCOVER OUR CATALOGUES](http://www.monarchspeak.com/en/download-central) (<http://www.monarchspeak.com/en/download-central>)

[DIRECT CONTAINER](http://www.monarchspeak.com/en/direct-container) (<http://www.monarchspeak.com/en/direct-container>)

[F.A.Q.](http://www.monarchspeak.com/en/faq) (<http://www.monarchspeak.com/en/faq>)

[CONTACT US](mailto:info@monarchspeak.com) (<mailto:info@monarchspeak.com>)

USEFUL INFORMATION

[THE COMPANY](http://www.monarchspeak.com/en/monarch-specialties) (<http://www.monarchspeak.com/en/monarch-specialties>)

[INTERNATIONAL HEAD OFFICE](http://www.monarchsiadirect.com) (<http://www.monarchsiadirect.com>)

[OUR MISSION](http://www.monarchspeak.com/en/our-mission) (<http://www.monarchspeak.com/en/our-mission>)

[TRIBUTE](http://www.monarchspeak.com/en/tribute) (<http://www.monarchspeak.com/en/tribute>)

[OUR TEAM](http://www.monarchspeak.com/en/our-team) (<http://www.monarchspeak.com/en/our-team>)

[OUR SHOWROOM](http://www.monarchspeak.com/en/showroom) (<http://www.monarchspeak.com/en/showroom>)

[FIND A STORE](http://www.monarchspeak.com/en/find_a_store) (http://www.monarchspeak.com/en/find_a_store)

[SALES TEAM](http://www.monarchspeak.com/info/pages/login_R4.asp?usr=s) (http://www.monarchspeak.com/info/pages/login_R4.asp?usr=s)

