



English

YAMAHA BDX-610 Blu-ray Disc Home Theater System Connection Guide

UCGFL
YAMAHA CORPORATION
© 2011 Yamaha Corporation
Printed in China BDX-610_enf

The Yamaha BDX-610 Blu-ray Disc Home Theater System has what you are looking for to add great sound to your home theater. By following the steps in this Connection Guide, you will have your home theater set up in no time, and enjoying music and movies like never before. This guide consists of three sections. The first section explains how to place the speakers and connect the speakers/antenna. The second section explains how to connect the Blu-ray Disc Receiver and your TV. The third section explains how to connect your iPod or iPhone. See the owner's manual for full instructions and precautions.

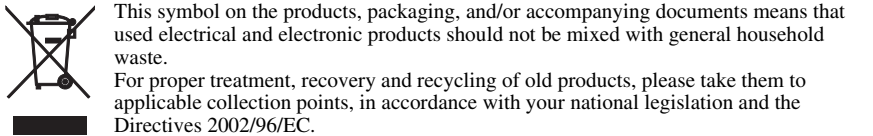
Caution: Disconnect all components from AC outlets before proceeding.

Precautions for Speakers

Please read the following operating precautions before use. Yamaha will not be held responsible for any damage and/or injury caused by not following the cautions below.

- To assure the finest performance, please read this manual carefully. Keep it in a safe place for future reference.
- Install the speakers in a cool, dry, clean place – away from windows, sources of heat, sources of excessive vibration, dust, moisture or cold. Avoid sources of electrical humming (e.g., transformers and motors). To prevent fire or electric shock, do not expose the speakers to rain or water.
- To prevent the enclosure from warping or discoloring, do not expose the speakers to direct sunlight or excessive humidity.
- Avoid installing the speakers where foreign objects may fall onto them and/or where they may be exposed to liquid dripping or splashing.
- Do not place the following objects on top of the speakers:
 - Other components, as they might damage or discolor the surface of the speakers.
 - Burning objects (e.g., candles), as they might cause fire, damage to the speakers or personal injury.
 - Containers of liquid, as they might spill and cause electric shock to the user or damage to the speakers.
- Do not place the speakers where they are liable to be knocked over or struck by falling objects. Stable placement will also ensure better sound performance.
- Placing the speakers on the same shelf or rack as the turntable can result in feedback.
- Any time you note distortion, reduce the volume control on your amplifier to lower setting. Never allow your amplifier to be driven into "clipping". Otherwise, the speakers may be damaged.
- When using an amplifier with a rated output power higher than the nominal input power of the speakers, care should be taken not to exceed the maximum input of the speakers.
- Do not attempt to clean the speakers with chemical solvents as this might damage the finish. Use a clean, dry cloth.
- Do not attempt to modify or fix the speakers. Contact qualified Yamaha service personnel when service is needed. The cabinet should never be opened for any reason.
- Be sure to read the "Troubleshooting" section in the owner's manual regarding common operating errors before concluding that the speakers are faulty.
- Secure placement or installation is the owner's responsibility. Yamaha is not liable for accidents caused by improper placement or installation of speakers.

Information for Users on Collection and Disposal of Old Equipment



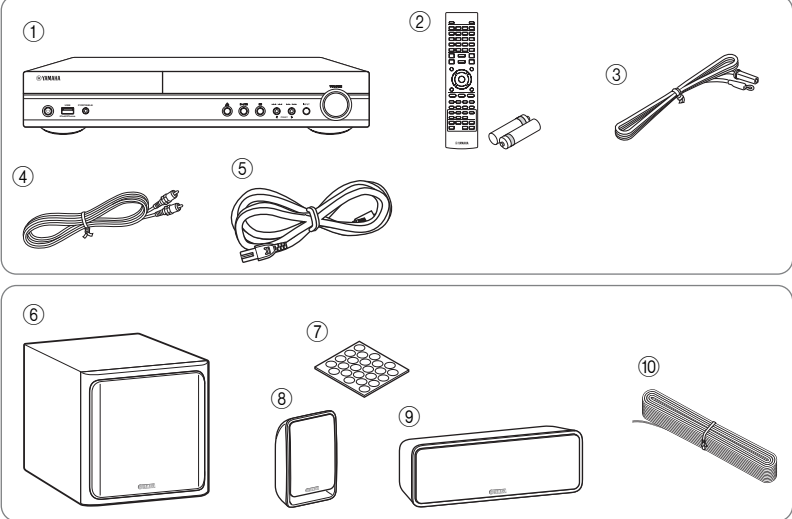
This symbol on the products, packaging, and/or accompanying documents means that used electrical and electronic products should not be mixed with general household waste. For proper treatment, recovery and recycling of old products, please take them to applicable collection points, in accordance with your national legislation and the Directives 2002/96/EC. By disposing of these products correctly, you will help to save valuable resources and prevent any potential negative effects on human health and the environment which could otherwise arise from inappropriate waste handling. For more information about collection and recycling of old products, please contact your local municipality, your waste disposal service or the point of sale where you purchased the items. [Information on Disposal in other Countries outside the European Union] This symbol is only valid in the European Union. If you wish to discard these items, please contact your local authorities or dealer and ask for the correct method of disposal.

Speaker Specifications

Type	
NS-B20/NS-C20.....	Full range acoustic suspension non magnetic shielding type
NS-SWP20.....	Bass reflex non magnetic shielding type
Driver	
NS-B20/NS-C20.....	7 cm (2-3/4") cone type
NS-SWP20.....	16 cm (6-1/2") cone type
Nominal input power	
30 W	
Maximum input power	
100 W	
Impedance	
6 Ω	
Frequency response	
NS-B20.....	70 Hz to 25 kHz (-10 dB)
NS-C20.....	65 Hz to 25 kHz (-10 dB)
NS-SWP20.....	30 Hz to 2 kHz (-10 dB)
Sensitivity	
NS-B20.....	83 dB/2.83 V, 1 m
NS-C20.....	84 dB/2.83 V, 1 m
NS-SWP20.....	86 dB/2.83 V, 1 m
Dimensions (W × H × D)	
NS-B20.....	115 × 176 × 88 mm (4-1/2" × 6-7/8" × 3-1/2")
NS-C20.....	291 × 101 × 103 mm (11-1/2" × 4" × 4")
NS-SWP20.....	262 × 264 × 287 mm (10-3/8" × 10-3/8" × 11-1/4")
Weight	
NS-B20.....	0.48 kg (1.06 lbs.)
NS-C20.....	0.68 kg (1.50 lbs.)
NS-SWP20.....	5.2 kg (11.5 lbs.)

Speaker and Antenna

1 Checking the package contents



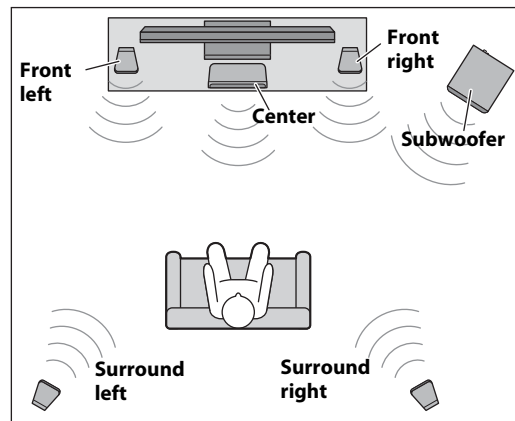
Unpack and check the package contents. The following items are necessary for connecting this system. See the owner's manuals for a complete list of supplied items.

- Blu-ray Disc Receiver (BRX-610)
- Remote control and two batteries (AAA, R03, UM-4)
- Indoor FM antenna*
- Composite video cable
- Power cable*
- Subwoofer (NS-SWP20)
- Non-skid pads (24 pcs.) (For the front, center and surround speakers. Including 4 spare non-skid pads.)
- Front/surround speaker × 4 (NS-B20)
- Center speaker (NS-C20)
- Speaker cable: 29 m (95 ft)

* The indoor FM antenna and power cable differ depending on destination country.

Note: To complete setup of this system, an optical digital cable and additional HDMI cable are necessary.

2 Positioning the speakers

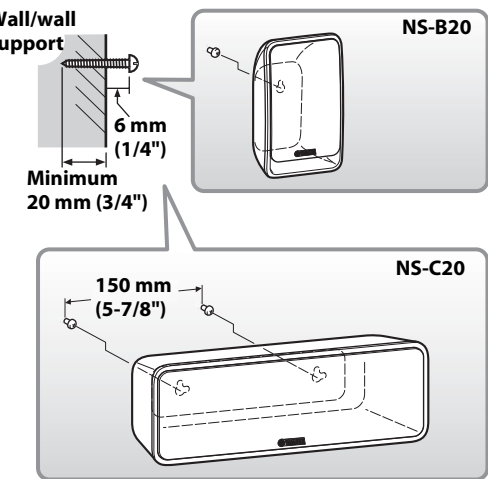


The front and surround speakers are identical, so it does not matter which one you use in each position. Position the speakers as shown. See the owner's manuals for more information on installing the speakers. When placing the speakers on a flat surface, affix the included non-skid pads to the corners of the speaker undersides.

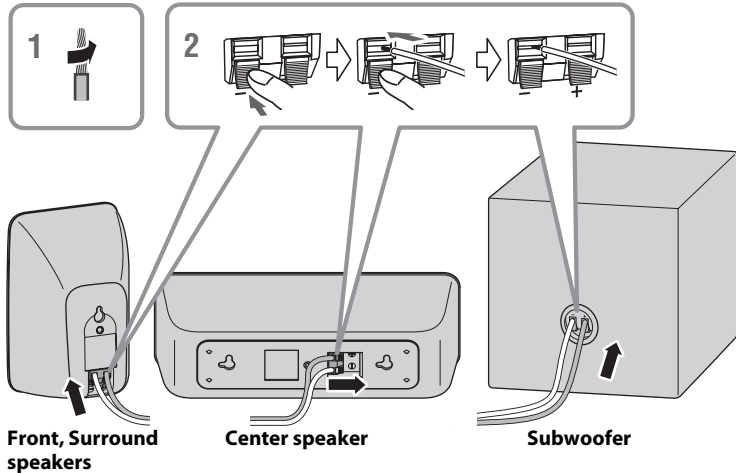
You can mount the speakers on the wall as follows.

- Install screws into a solid wall or wall support as shown on the left. Use 3.5 to 4 mm (1/8") diameter self-tapping screws.
- Hang each speaker by its keyhole slots onto the protruding screws.

Note: Make sure the shaft of the screw is seated in the narrow part of the keyhole slot. Otherwise, the speaker may fall.

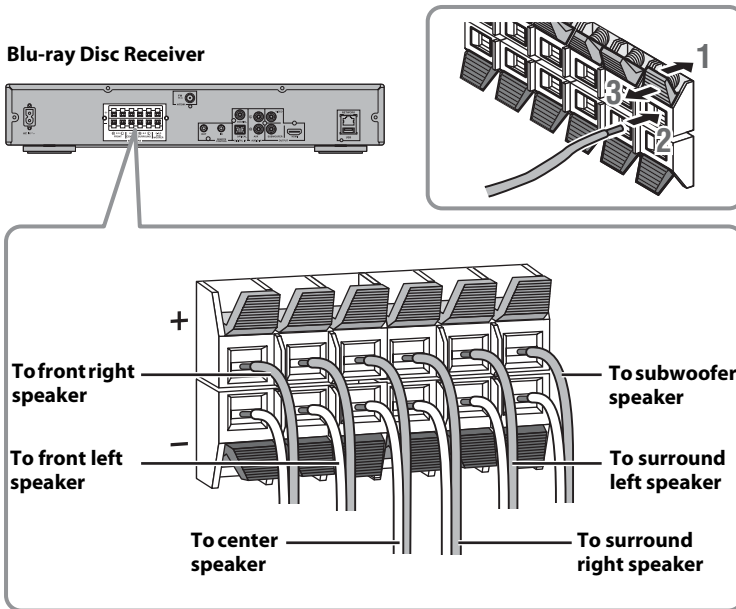


3 Preparing the cables and speakers



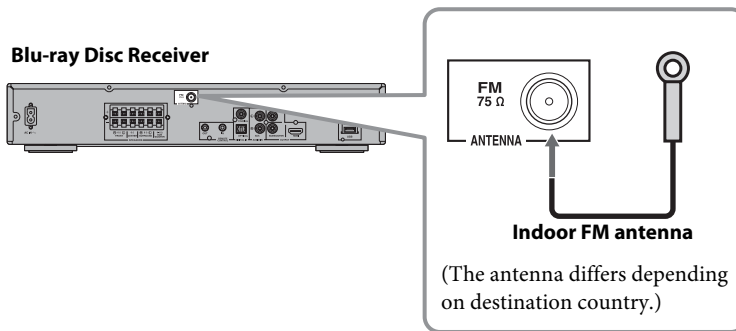
- Cut the included speaker cable to suitable lengths for the front, center, and surround speakers. You need to make six cables altogether. Remove about 10 mm (3/8") of insulation from the end of each cable, and then twist the bare strands tightly.
- Connect the speaker cables to the front speakers (⑧), surround speakers (⑧), center speaker (⑨), and subwoofer (⑥). Make sure you connect the speakers with the correct polarity: positive (+) cables to positive (+) terminals, and negative (–) cables to negative (–) terminals.

4 Connecting the speaker cable to the Blu-ray Disc Receiver



Connect the center, surround, subwoofer speaker cables to the Blu-ray Disc Receiver. Make sure you connect the speakers with the correct polarity: positive (+) cables to positive (+) terminals, and negative (–) cables to negative (–) terminals.

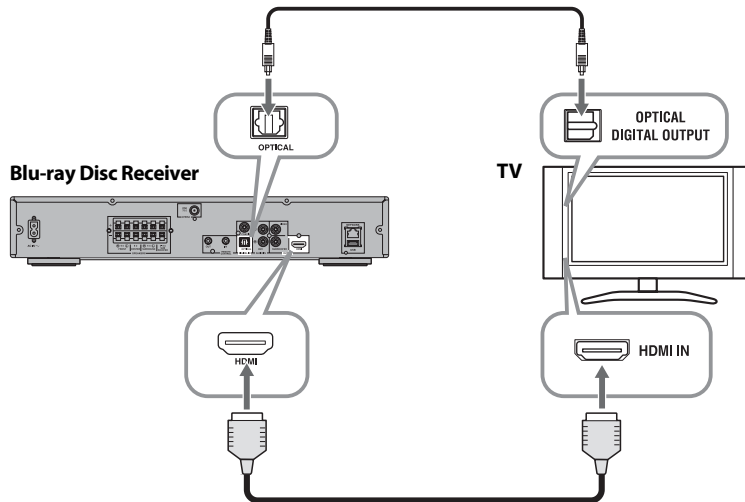
5 Connecting the antenna



Connect the supplied indoor FM antenna to the Blu-ray Disc Receiver, as shown. See the owner's manuals for more information about connecting an antenna.

Connecting your TV

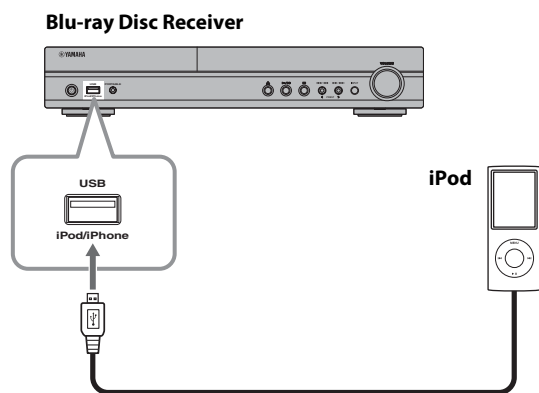
This guide introduces a basic example to connect the Blu-ray Disc Receiver and your TV. **Caution:** Disconnect all components from AC outlets before proceeding.



- Connect your TV's HDMI input jack to the HDMI OUTPUT jack of the Blu-ray Disc Receiver, using an additional HDMI cable.
- Connect your TV's optical digital output jack to the OPTICAL DIGITAL IN jack of the Blu-ray Disc Receiver using an additional optical digital cable.

Note: If your TV's HDMI terminal is ARC (audio return channel) supported, an optical digital cable is not necessary. Select [On] for [HDMI Control] in SETUP menu when using an HDMI cable only. See the owner's manual for more information about HDMI.

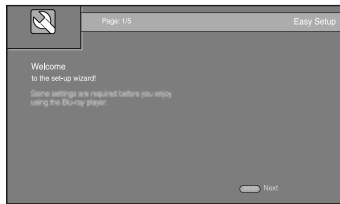
Connecting the iPod



Use an additional USB cable to connect the iPod/iPhone to the Blu-ray Disc Receiver, as shown.

Almost Finished

- Install the batteries in the Blu-ray Disc Receiver's remote control.
- Connect the Blu-ray Disc Receiver, and your TV to suitable AC outlets.
- Turn on the Blu-ray Disc Receiver first, and then your TV.
- Perform Initial Wizard/Easy Setup to set language, resolution, and screen aspect ratio easily.



Time to enjoy your Yamaha home theater system!

Now, relax and enjoy the great sound of your Yamaha home theater system.