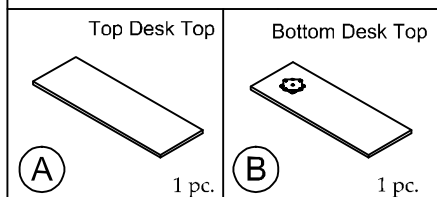


#28632
Swivel Desk Top
#28633
Swivel Desk Base

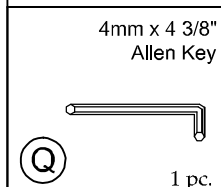
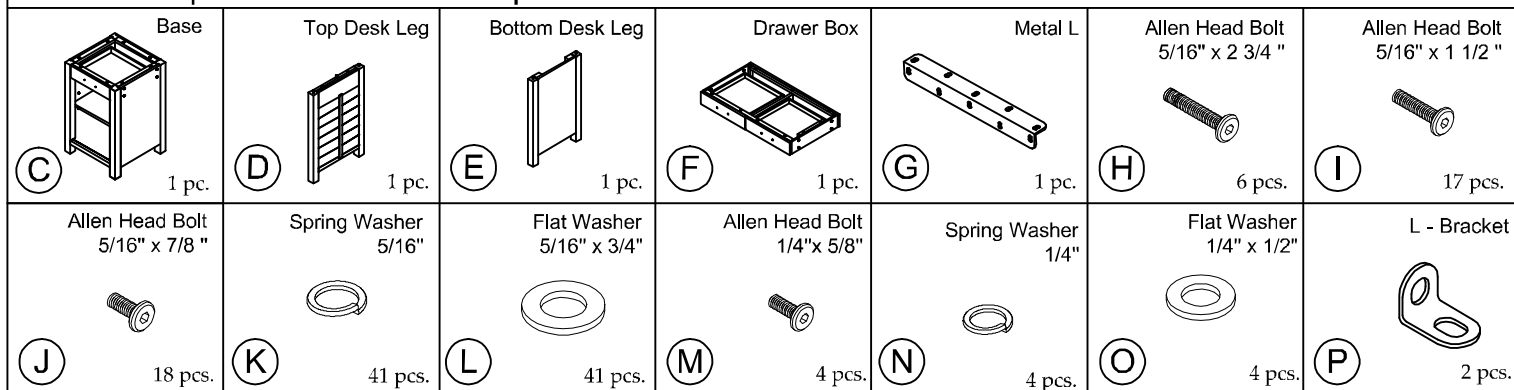
Warning :

- Be sure to check all packing material carefully for small parts, which may have come loose inside the carton during shipment.
- To prevent possible scratches and damage, this furniture **MUST BE ASSEMBLED BY TWO PEOPLE** on a soft surface such as a blanket or carpet.

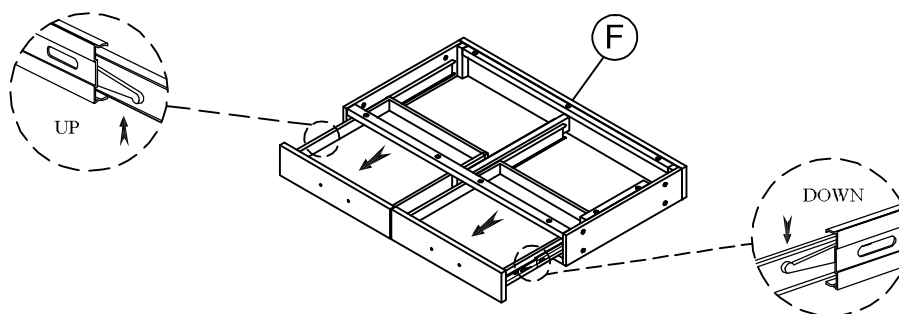
Components packed with the # 28632 Desk Top



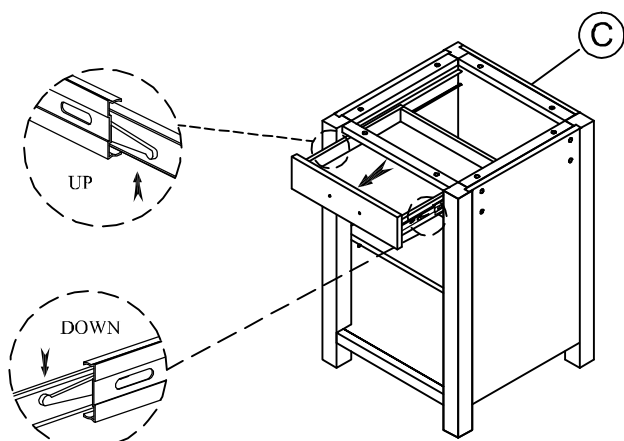
Components & Hardware packed with the # 28633 Desk Base



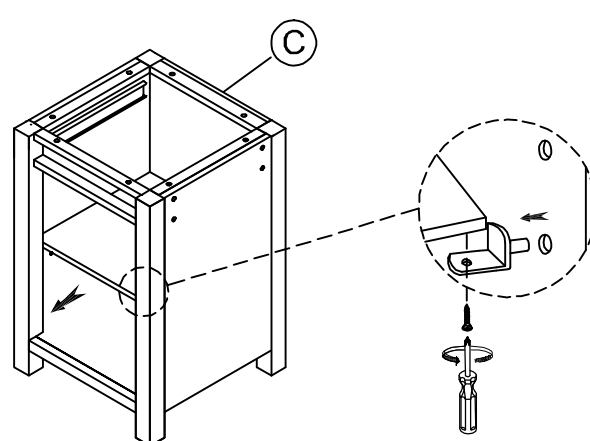
Step 1 : Remove both Drawers



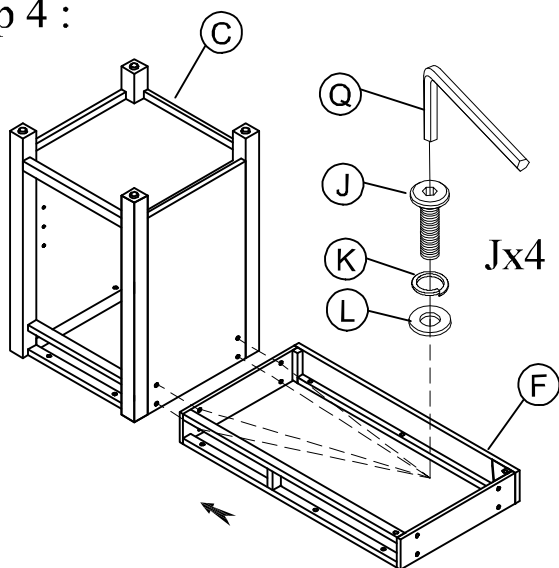
Step 2 : Remove Drawer



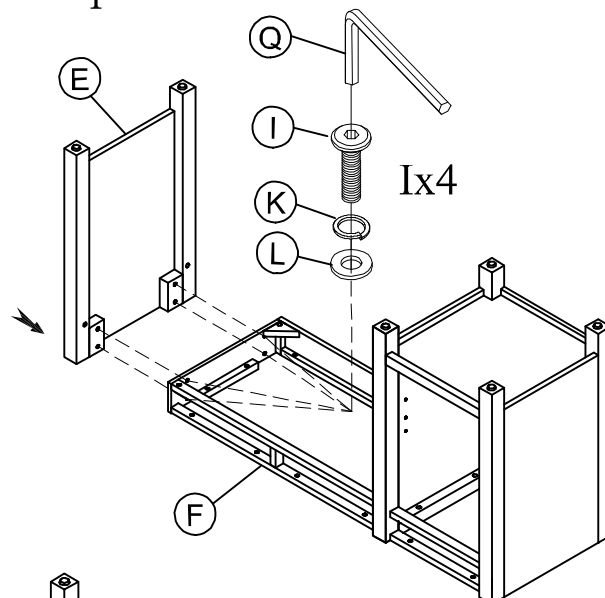
Step 3 : Remove Shelf



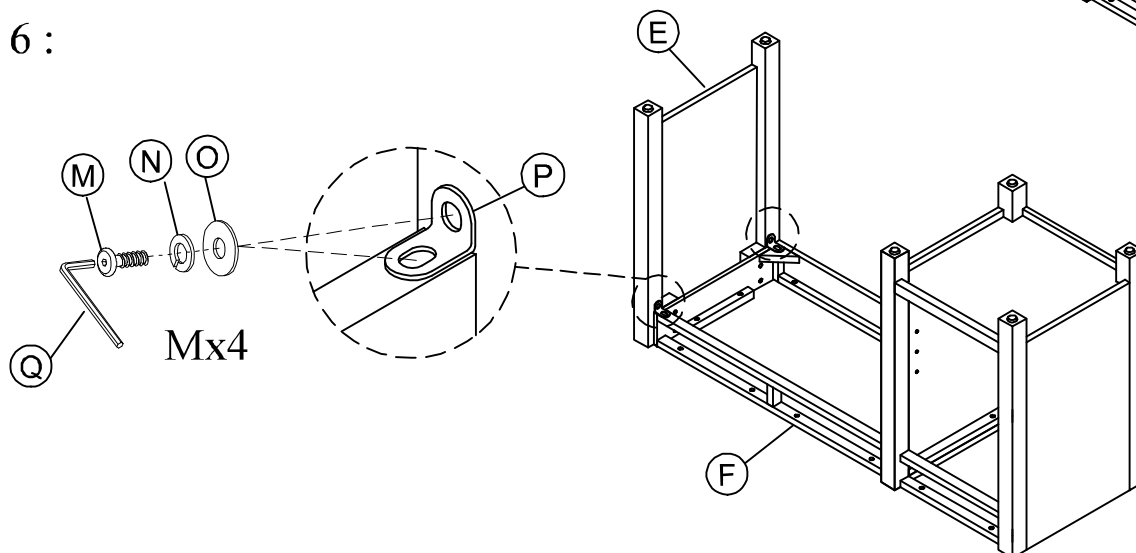
Step 4 :



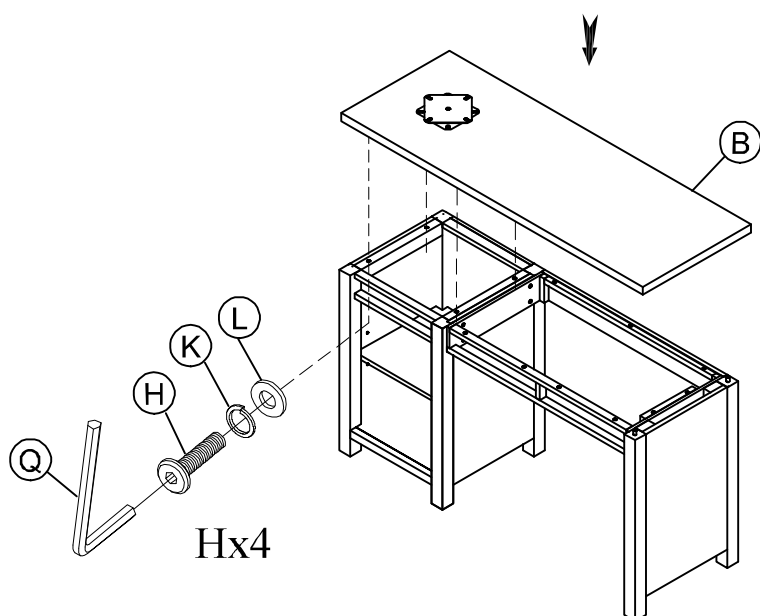
Step 5 :



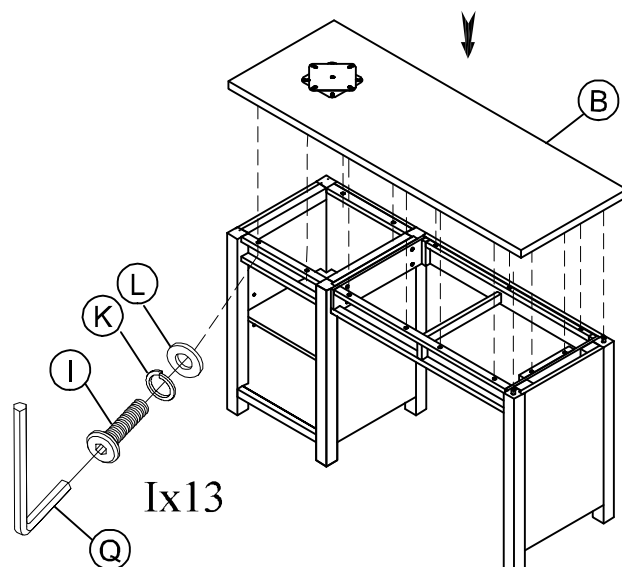
Step 6 :



Step 7 : Do not fully tighten the bolts

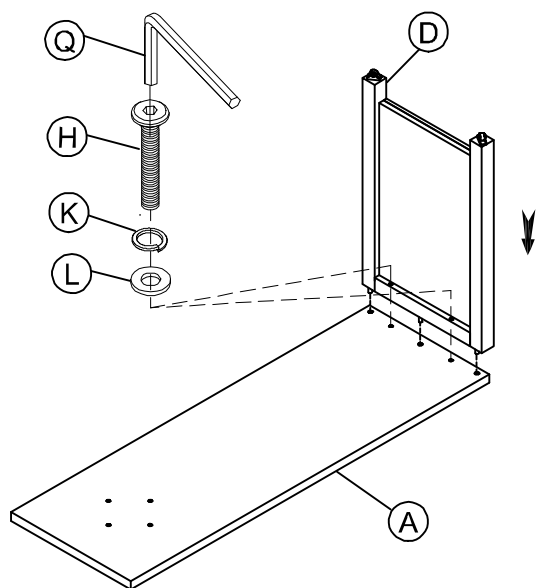


Step 8 : Using the Allen key to tighten all bolts



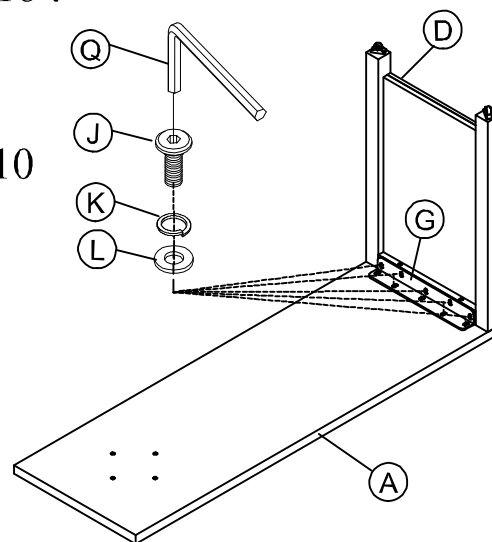
Step 9 :

Hx2

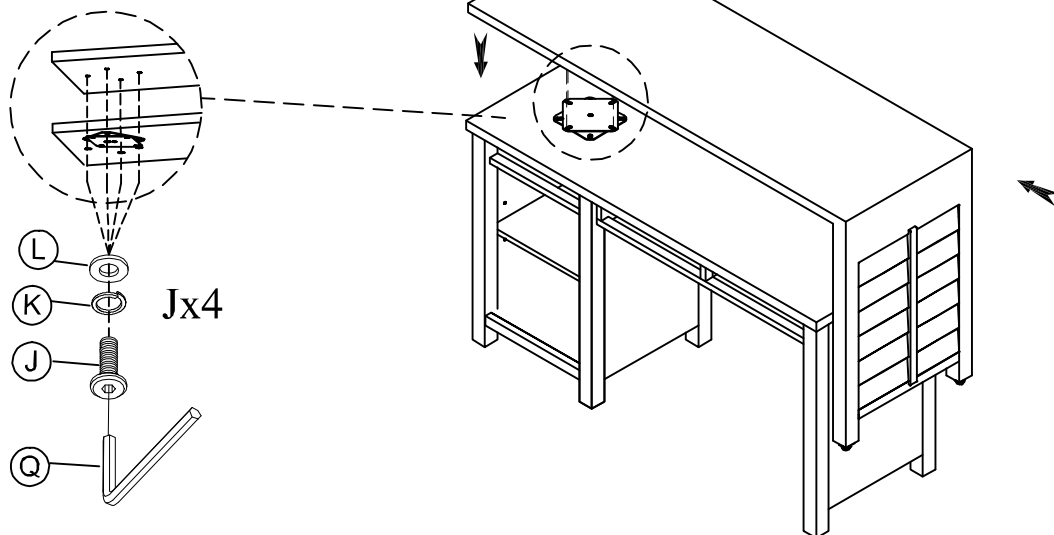


Step 10 :

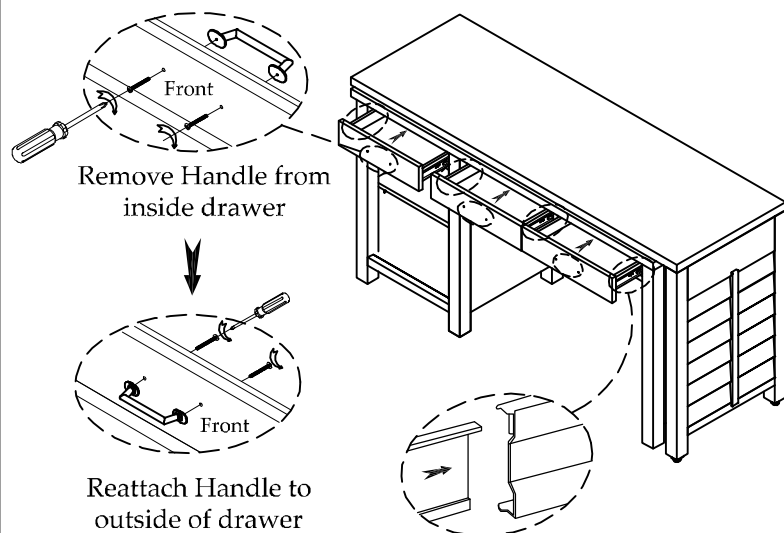
Jx10



Step 11 :



Step 12 : Attach all Drawers



Step 13 : Attach Shelf

