



XOGOK36V2
PRE-ASSEMBLED
DESIGNER ISLANDS

FASTEST, EASIEST WAY TO AN OUTDOOR KITCHEN



PRE-ASSEMBLED DESIGNER ISLAND

At only 6-1/2' long, the XOGOK36V2 island is an outdoor kitchen that fits almost anywhere, but with its XO 36" Pro-Grade grill, combo storage and outdoor rated 24" refrigerator it is ready to perform.

And because it arrives assembled, ready for the appliances - you spend more time grilling and less time building..

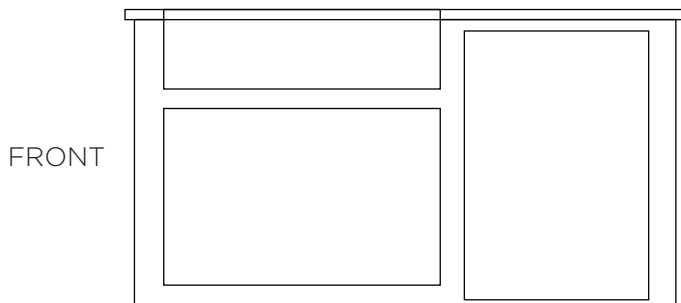
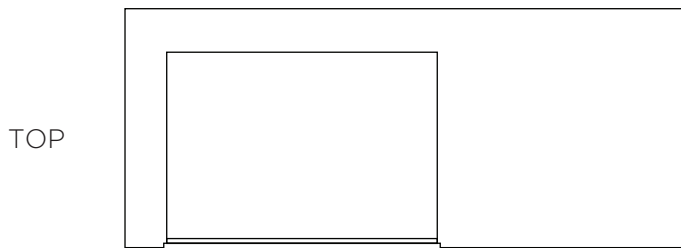
WORLD CLASS SERVICE | COMPREHENSIVE WARRANTIES

OUR LASTING COMMITMENT TO YOU

xoappliance.com | 800.966.8300

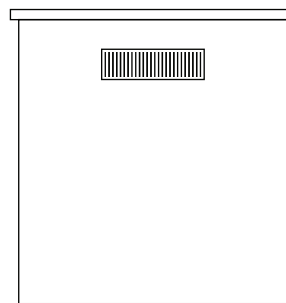


**SPECIFY NATURAL GAS OR PROPANE WHEN ORDERING GRILL -
REQUIRES TWO (2) 115V GFI PROTECTED OUTLETS (NOT INCLUDED)**



ISLAND ARRIVES PRE-ASSEMBLED
WITH CUT-OUTS AS SHOWN
READY FOR APPLIANCE INSTALLATION

ISLAND COMES WITH LEVELING LEGS
AND REMOVABLE CASTERS



FEATURES

FINISH

Available in Black, White and Gray
Architectural finish grade - fiber reinforced cement panels and white carrera style countertop over a welded steel frame
Comes with leveling legs and removable casters

APPLIANCES (SOLD SEPARATELY)

XOGRILL36 - PRO-GRADE welded SS Grill available in Propane or Natural Gas with (1) variable InfraRed Sear burner (0 to 1000 in a minute)
(2) 22,000 BTU Cast SS Burners with advanced ceramic briquette trays
Largest total cooking area in class
Knob Accent lighting, Interior Halogen lights
Easy lift hood - Rotisserie - Thermometer
Flame thrower reliable ignition

5.7 cu ft outdoor rated SS refrigerator
Holds 145 (12oz) cans
Rated for 34 - 50 operation

Combination SS access door with twin drawers

SPECIFICATIONS

DIMENSIONS H 37"
W 78"
D 30"

WEIGHT approx 400 lbs

GRILL All welded SS construction
(2) 22K Cast SS burners
(1) 22K BTU InfraRed Sear
(1) 11K BTU InfraRed Rear
665 sq in Primary Grill Area
313 sq in Secondary Grill Area*
(fits 1/4 baking sheet)
978 Total Grill Area
25 lb Rotisserie

ELECTRICAL 115V 60HZ 4.0 AMP

Grill has transformer module to supply power to LED control lighting and interior Halogen lamps. Module is pre-wired with 3 prong 115v plug. Refrigerator is pre-wired with 3 prong 115v plug.

Both appliances must be plugged into a GFI protected outlet not supplied.

