

#### PRODUCT FEATURES

- Built-in appliance
- Fuel source: Electric
- Digital touch screen controls
- Digital clock and timer function
- Sturdy zinc alloy / stainless-steel handle
- Standard microwave oven door closing
- Single convection fan
- Stainless-steel interior finish
- Child safety lock and CoolTouch door
- 1 rack position

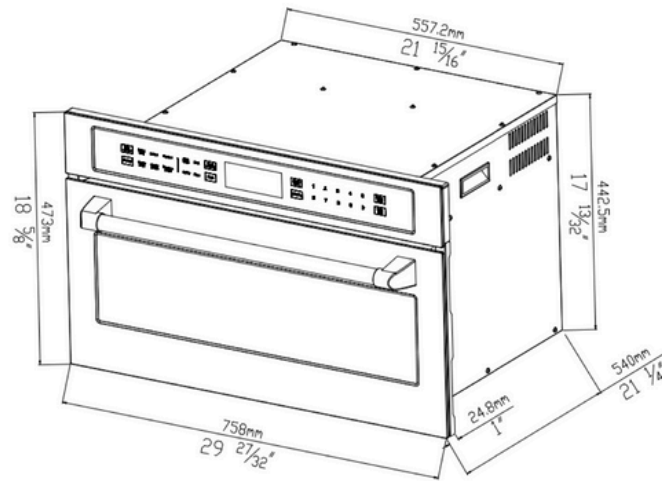


#### GENERAL FEATURES

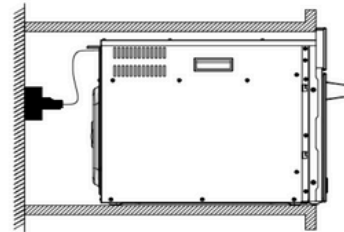
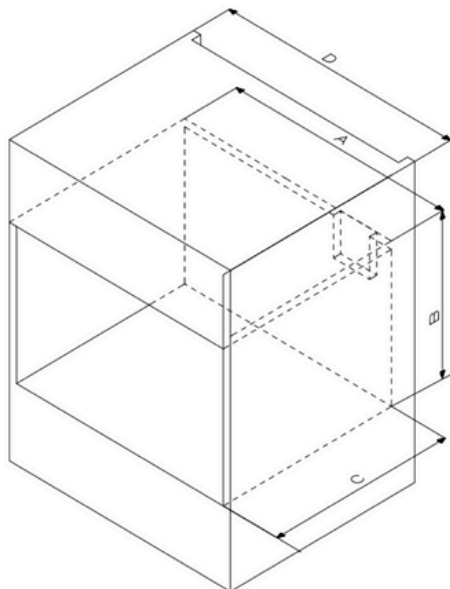
<b>Model No.</b>	<b>VMS100-SS</b>
Fuel Type	Electric
Capacity	1.6 cu. ft.
Wattage Convection	1700w
Wattage Broil Element	1700w
Wattage Bake Element	600w
Cooking Modes	Convection, Broil, Airfry, Broil Roast, Pizza, Warm, Proof
Oven Special Feature	Sabbath Mode
Cleaning System	Self-Clean
Oven Temp Range (F)	175°-450°
Microwave Special Feature	STRAT/+30 Seconds

#### PRODUCT SPECIFICATIONS

- Model No.: **VMS100-SS**
- Product Dimensions: **29 27/32"W x 21 1/4"D x 18 5/8"H**
- Package Dimensions: **33.7"W x 26"D x 22.1"H**
- Product Weight: **99 bs**
- Shipping Weight: **115 lbs**
- Electrical Supply: **120V 60Hz / 20 amp**
- Electrical hardwire: **Molded electrical plug, NEMA 5-20P**



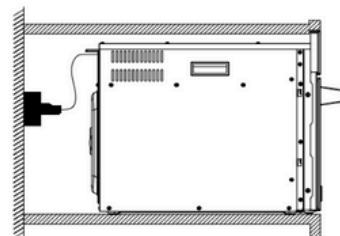
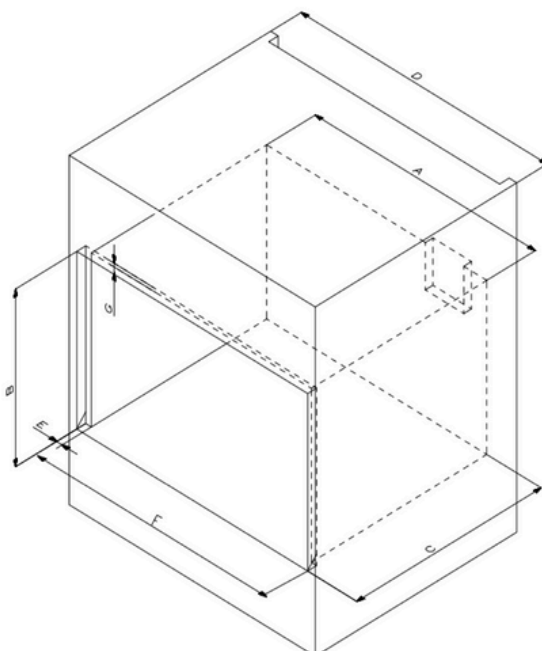
#### STANDARD INSTALLATION



Standard installation  
Side view

- A: 28 9/16 " (725.6mm)
- B: 18 5/16 " (465.1mm)
- C: 23 7/32 " (590mm)
- D: 30 17/32 " (775.6mm)

#### FLUSH INSTALLATION



Flush installation  
Side view

- A: 28 9/16 " (725.6mm)
- B: 18 25/32 " (477mm)
- C: 24 " (609.6mm)
- D: 32 " (813mm)
- E: 23/32 " (18.2mm)
- F: 30 " (762mm)
- G: 13/32 " (10mm)