

ASSEMBLY INSTRUCTION FOR


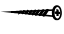








QUEEN BED

WN100QHF/WN100QR/WN100QS

Caution: Please read instructions thoroughly before unpacking assembly parts. Sharp, exposed staple tips can cause injury, therefore, for your protection, please remove any exposed staples used in packing.

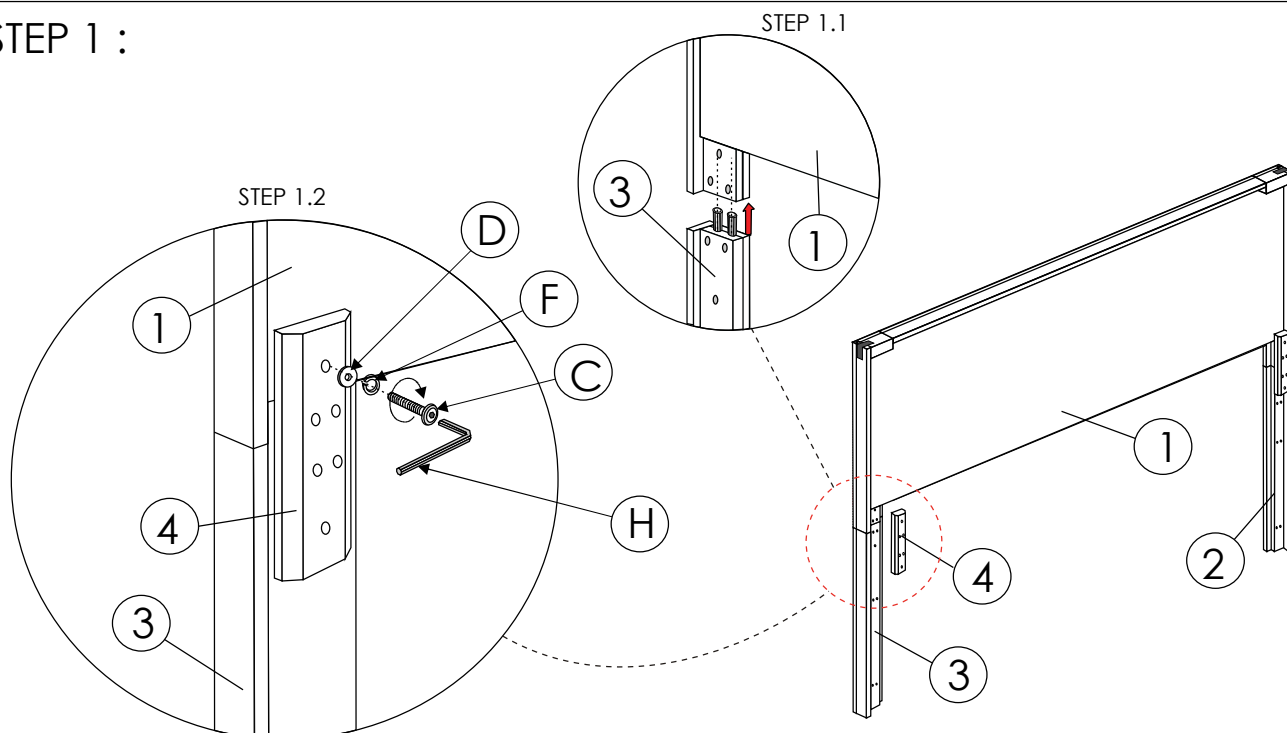
1. We recommend that you should assemble this product with the assistance of another person; this will make assembly easier, and will help to eliminate damage to the product or injury to persons during assembly.
2. Be sure to check all packing materials carefully for small parts that may come loose inside the carton during shipment.
3. Please do not over tighten screws or bolts.
4. Please put all parts on a non-abrasive floor before assembly, and follow the assembly steps to assemble your newly purchased product correctly and efficiently.

PART LIST			
NO	PART DESC	CODE	QTY
1	Queen Headboard	WN100QH	1
2	Queen Headboard Left Side Leg	WN100HBLRLEG	1
3	Queen Headboard Right Side Leg		1
4	Queen Headboard Fitting Wood		2
5	Queen Foot Board Frame	WN100QF	1
6	Queen Foot Board Foot Board Drawer Runner Support Rail (Long)	WN100QFDSR	1
7	Queen Foot Board Drawer Runner Support Rail (Short)		2
8	Queen Foot Board Drawer Runner Support Wood With Leveler		1
9	Queen Foot Board Drawer Box	WN100QFBDR	2
10	Queen Foot Board Support Leg With Adjustable Leveler (Short)	WN100QBSPL2	1
11	Queen Left Side Rail	WN100QBLSR	1
12	Queen Right Side Rail	WN100QBRSR	1
13	Queen Head Board Support Leg With Adjustable Leveler (Long)	WN100QBSPL1	3
14	Queen Headboard Slat	WN100QBSLT1	8
15	Queen Foot board Slat	WN100QBSLT2	4
16	Queen Side Rail Drawer Runner Support Wood		1

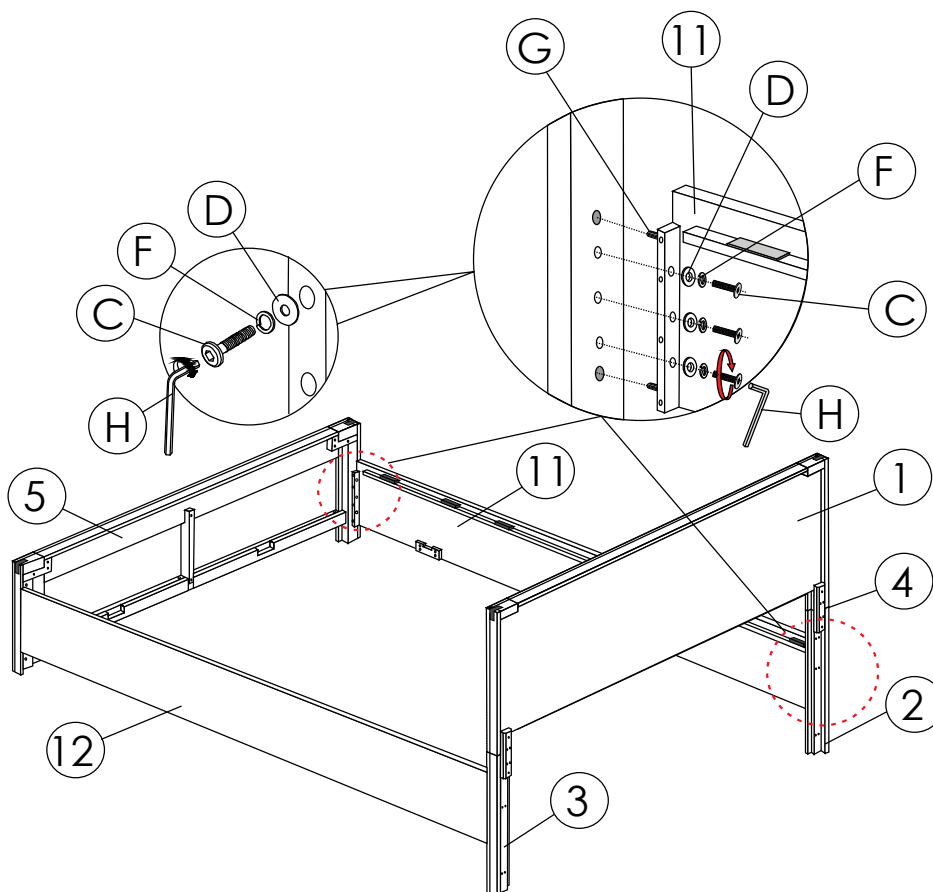
HARDWARE LIST				
NO		HARDWARE DESC	CODE	QTY
A		CBS. SCREW M3.5 x 12mm	WN100QBHW	12
B		CBS. SCREW M4 x 30mm		37
C		JCBC BOLT M6 x 40mm		26
D		FLAT WASHER M6 x 13mm		14
E		FLAT WASHER M6 x 19mm		12
F		SPRING WASHER M6 x 19mm		26
G		WOOD DOWEL 10 x 30mm		8
H		ALLEN KEY M4 x 58mm		1
G		DRAWER HANDLE 30 x 32 x 135mm		2
H		THM. SCREW M4 x 35mm		4

ASSEMBLY INSTRUCTION FOR QUEEN BED WN100QHF/WN100QR/WN100QS

STEP 1 :

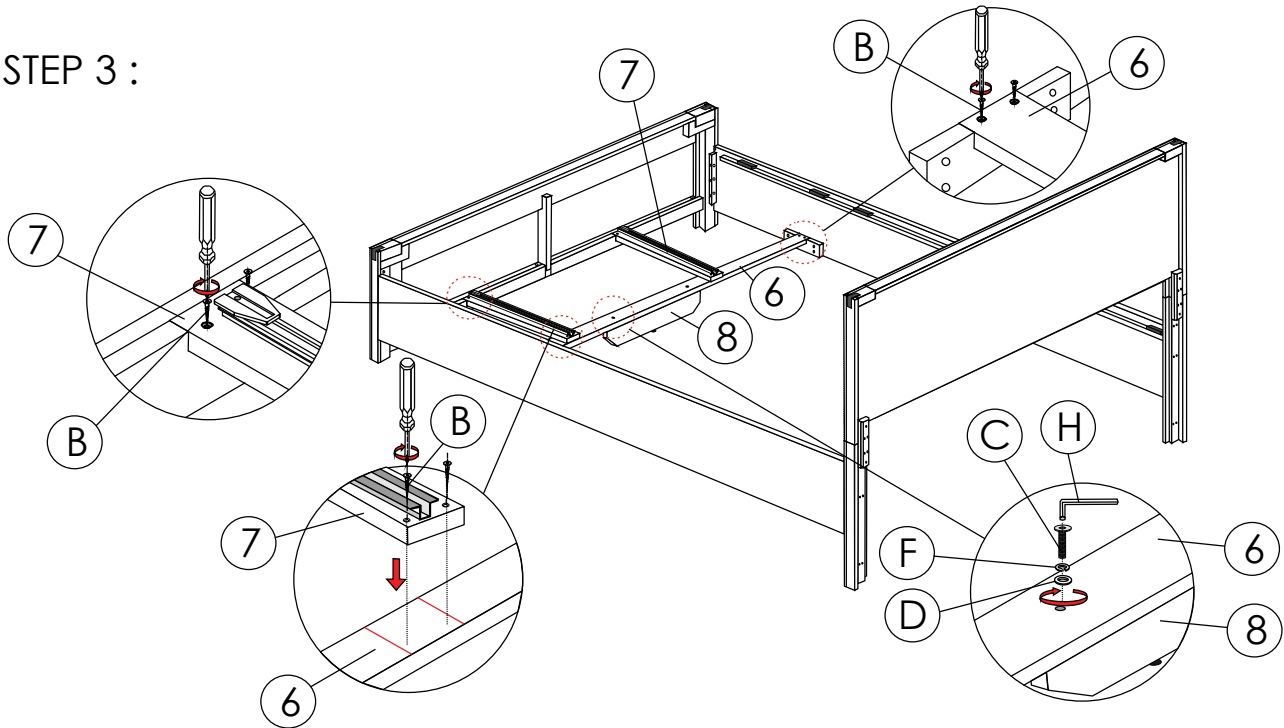


STEP 2 :

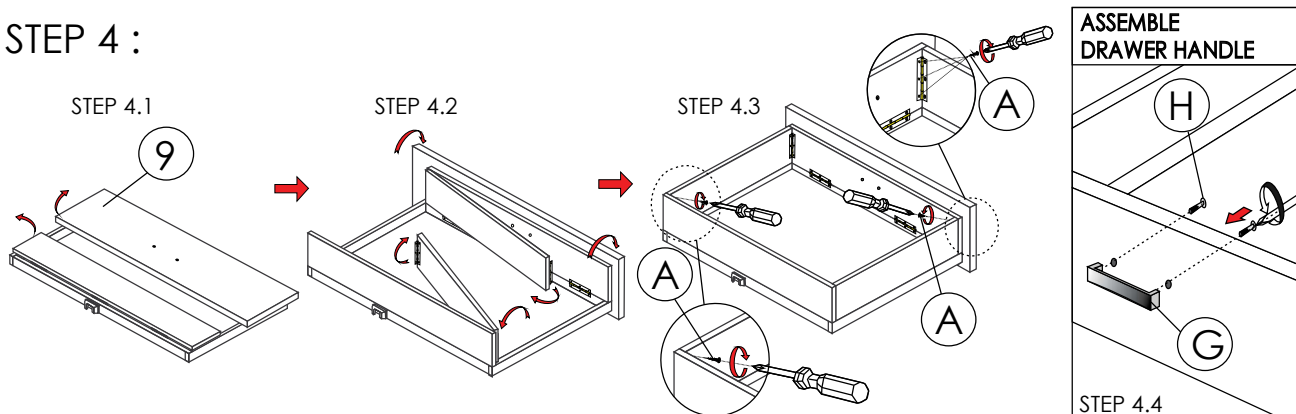


ASSEMBLY INSTRUCTION FOR QUEEN BED WN100QHF/WN100QR/WN100QS

STEP 3 :

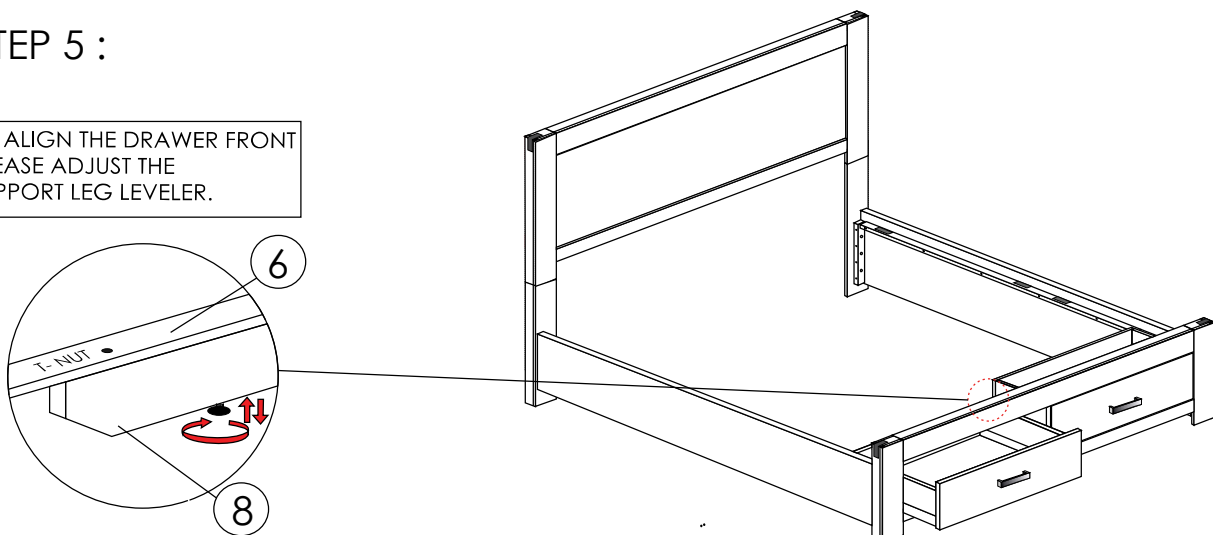


STEP 4 :



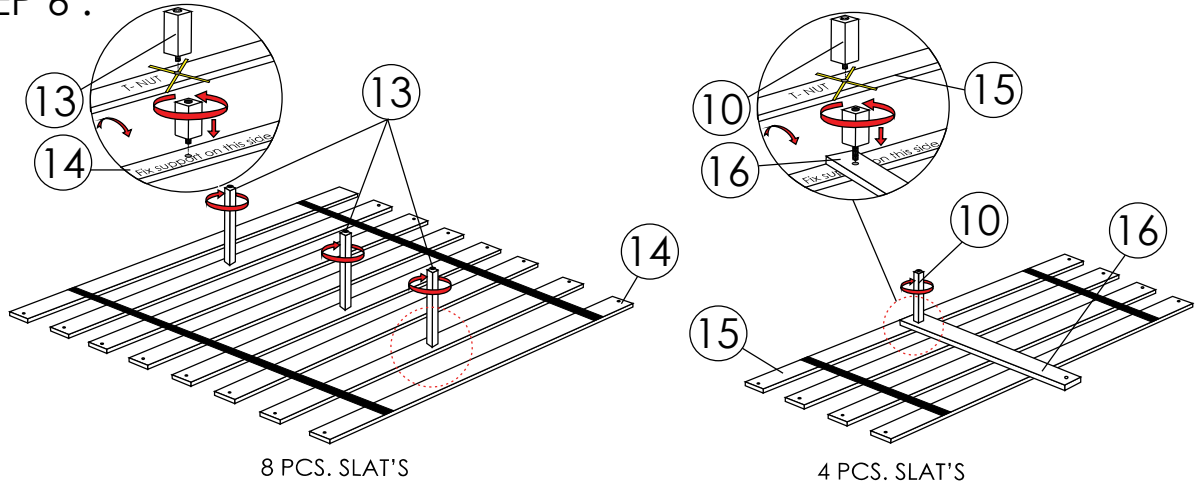
STEP 5 :

TO ALIGN THE DRAWER FRONT
PLEASE ADJUST THE
SUPPORT LEG LEVELER.

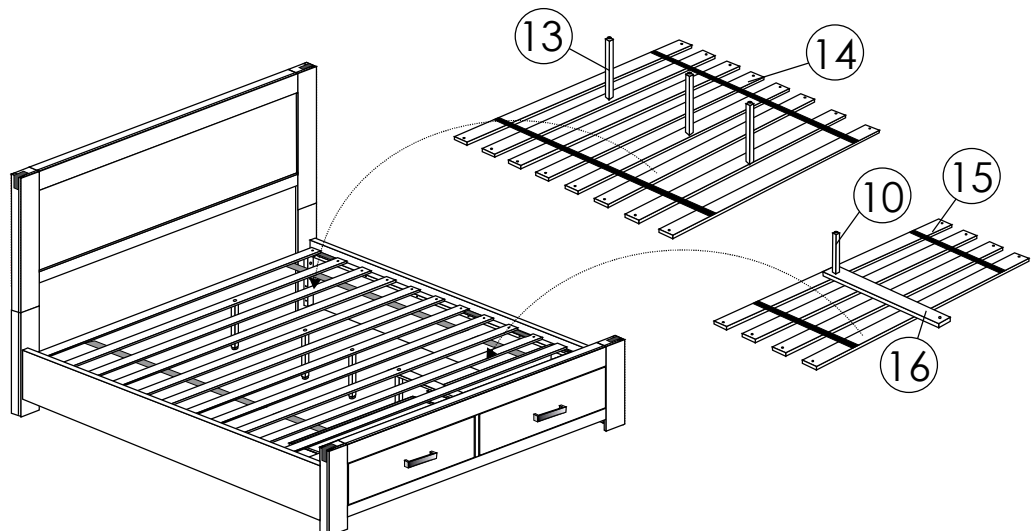


ASSEMBLY INSTRUCTION FOR QUEEN BED WN100QHF/WN100QR/WN100QS

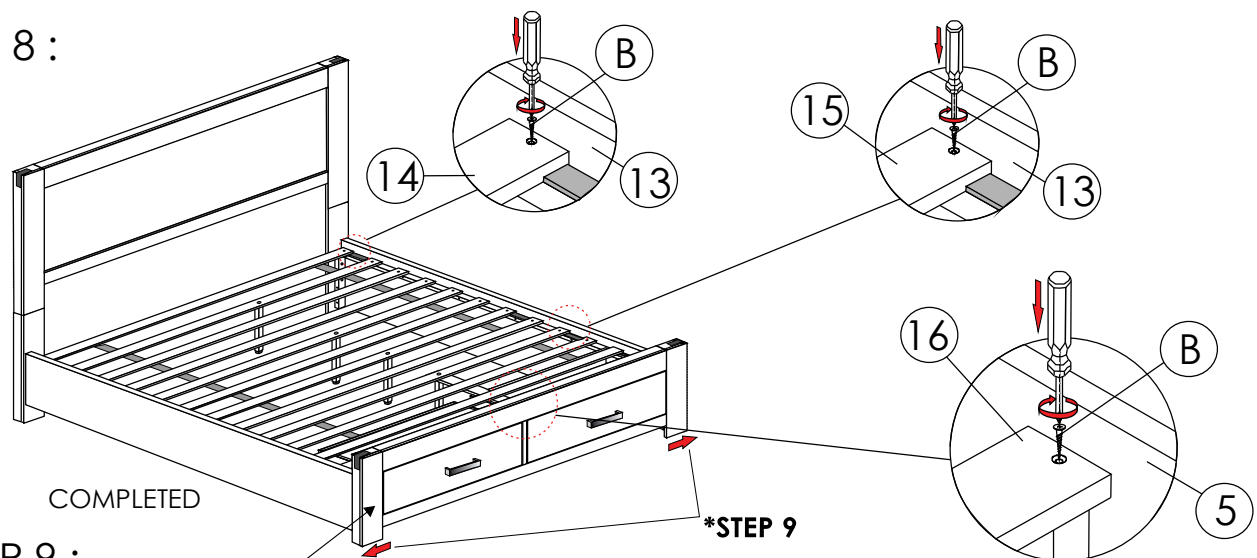
STEP 6 :



STEP 7 :



STEP 8 :



*STEP 9 :

Adjust the footboard frame (left or right)
to align the drawer front.