



Color Variants

VL041714
Stainless steel control panel
Control unit

Optional accessories

AS070000
Connection piece for extension in the case of installation next to VK or VF.
LS041000
Air baffle for VL 040/041 next to gas appliance.
VV200014
Stainless steel connection strip for combination with further Vario cooktops

VL041714

Downdraft ventilation Vario 200 series
Stainless steel control panel

Control unit

Air extraction/recirculation with remote fan unit AR 400/401/413

- Ventilation element integrated in the countertop
- Highly efficient ventilation system at the cooktop
- Compact ducting in connection with flat rectangular pipes AD 8..
- Minimal planning and easy installation for air recirculation

Output

Sound power level depends on the built-in situation.

Features

Output control with knob.
4 output levels.
Ventilation grill can be removed and washed.
Stainless steel filter with grease collecting tray, dishwasher-safe.
No duct connection piece included.

Planning notes

No additional switch necessary.
Air extraction operation in combination with remote fan units AR 400/401 or recirculation mode with AR 413.
Maximum cooktop width between two VL: 24" (exception: VI/VE 270).
Plan for air deflector LS 041 000 when installing next to gas appliances to prevent a flame which has been set to a low level from being extinguished.
When having installed the air baffle LS 041 000 the wok pan WP 400 001 can not be used.
When installing a ventilation hood with air extraction mode and a chimney-vented fireplace, the hood's power supply line needs a suitable safety switch.
Not for installation in the area of drawers.
For maximum duct lengths use Gaggenau flat rectangular ducts AD 8... or Naber-System Compair flow. Other flat ducts are not permitted!
Duct connection downwards or sideways:
DN 125 cylindrical included.
Optional DN 125/150 flat rectangular duct with connection piece AD 824/854 042 (installation accessory).
Connection of 2 VL with ducting
2x DN 125 cylindrical or 2x DN 125/150 rectangular at remote fan AR 4...
For leading through the floor DN 150 cylindrical with connection of 2 DN 125 cylindrical use Y-joint AD 754 044.
Please ensure when installing the exhaust air ducting that no sharp bends are caused and that the cross-section of the ducting is not constricted in any way.
For downdraft configurations with maximum lengths of exhaust air ducts go to Rodun at www.gaggenau.com.

Rating

Connecting cable 30" with plug.

Product Features

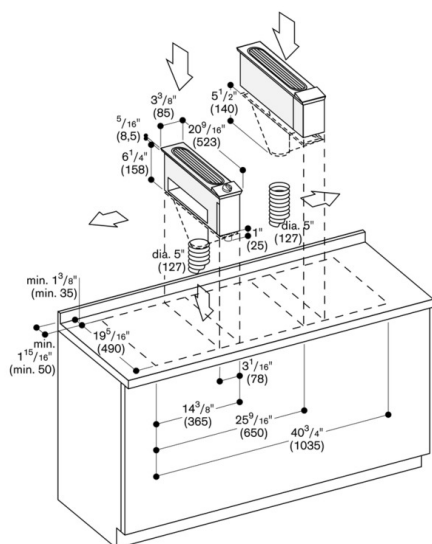
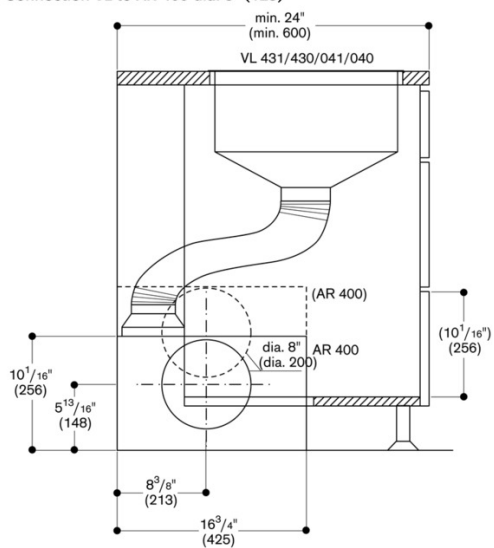
Operating Mode
Convertible: Ducted / Recirculating
Number of speed settings
2-stage
Delay Shut off modes
Silence level (dBA)
Required accessories
Optional accessories
AD724040, AS070000, LS041000, VV200014
Number of lights
Type of lamps used
Total power of the lamps (W)
Grease filter material
aluminium
Grease filter type
Multilayer
Clean filter reminders

Consumption and connection features

UPC code
825225887737
Material
Stainless steel
Watts (W)
Current (A)
Volts (V)
120
Frequency (Hz)
60
Approval certificates
CE, VDE
Power cord length (in)
Plug type
Overall appliance dimensions (HxWxD) (in)
7 1/16" / 7 1/16" x 3 3/8" x 20 1/2"
Product packaging dimensions (HxWxD) (in)
7.28 x 23.03 x 11.61
Height of the chimney (in)
Vertical rise height
Required distance above cooktop/ranges
Net weight (lbs)
6
Gross weight (lbs)
8
Adjustable feet
Motor location
Maximum CFM
Diameter of air duct (in) top
Diameter of air duct (in) back
Discharge direction
No-return airflow flap
No

2013-07-08
Page 1

Connection VL to AR 400 dia. 5" (125)



Pipe connection round duct left/right/below
 NW 125 with AD 724 040