



USER MANUAL

Lighted Mirror

PROFESSIONAL INSTALLATION RECOMMENDED

WARRANTY REGISTRATION

**REGISTER FOR
EXTRA BENEFITS**

Activate within 30 days of purchase:
seura.com/activate

1-800-957-3872
1230 ONTARIO ROAD, GREEN BAY, WI 54311
WWW.SEURA.COM

Thank you for selecting a Séura Lighted Mirror.

Please read this guide before beginning installation.

Carefully remove and inspect the unit for possible damage that occurred during shipping. If there is damage, please call Séura at 1-800-957-3872. If your shipment is damaged and is not noted on the delivery receipt, Séura cannot guarantee compensation. All freight damage claims must be reported to Séura Customer Service within 24 hours of delivery to be covered by our warranty.

NOTE: All Séura drawing packages indicate generalized nominal residential wood framing construction and are not indicative of any particular building code. It is the installers responsibility that all electrical, audio/visual, and framing construction are code compliant to the municipality in which the product is being installed. Modifications made to Séura recommendations are at the sole discretion of the installer and release Séura of all liability.

How to properly remove the unit from the box

Carefully lift each item out of the box. Lift the mirror by the brackets attached to the back of the mirror glass. If the mirror has a frame, do not pull the unit out of the box by the frame as the frame may detach from the mirror. Lay the mirror glass flat or upright against a sturdy wall with the foam protectors remaining on the unit.

Séura Lighted Mirrors use LEDs that are rated to retain 70% overall brightness and the end of life, including cases where an individual LED fails.

How to properly store the unit until installation

After inspection, repack the unit so it stays safe and protected until installation.



WARNING: READ ALL INSTRUCTIONS AND REVIEW THE COMPLETE DRAWING PACKAGE BEFORE ATTEMPTING TO INSTALL OR SERVICE THIS PRODUCT.

When installing and during use of this product, basic safety precautions should always be followed to reduce the risk of fire, electric shock and/or injury to persons including the following:

- Make sure the installation area is free of clutter.
- Do not place the product on an unstable cart, stand, tripod or table.
- To avoid damage to the mirror, only transport it in a vertical position. Transporting the product horizontally may permanently warp the mirror.
- Inspect the desired location for installation and be aware of all electrical wiring pathways, water pipes, gas lines, or other potentially hazardous conditions that may exist to protect from accidental damage.
- Ensure all required electrical specifications are adhered to and have been installed by the appropriate

individuals and are code approved.

- Ensure all framing requirements, if needed, have been completed to building code and pose no structural issues.
- It is highly recommended that at least two (2) people assist in the installation of the mirror.
- Only qualified individuals should attempt to service the product.
- Close adult supervision is necessary when any product is used by or near children.
- Protect against electric shocks and burns by wearing safety gloves.
- Do not operate any product with a damaged cord or plug or operate it after the appliance malfunctions or has been damaged in any manner.
- Do not let the power cord or wiring come in contact with hot surfaces such as radiators, heat registers, stoves, or other

products that produce heat.

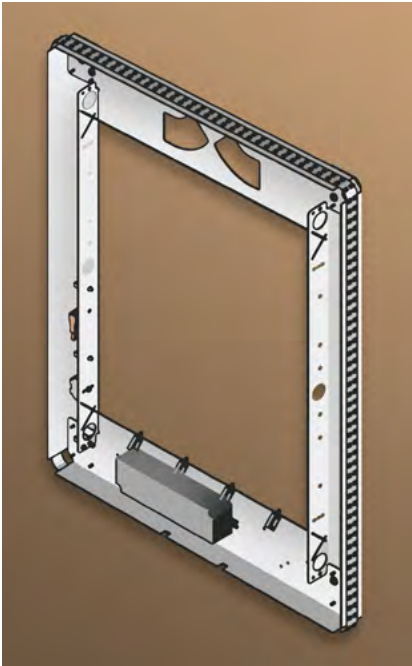
- To protect against electric shock, do not immerse the power cord, power plug, or product in water or other liquid.
- This product is only intended for use indoors.
- This product is not waterproof. Do not immerse this product in water or expose to dripping or splashing water as this could cause an electrical hazard.
- In damp locations, it is REQUIRED that the plug-in version of this product is plugged into an electrical outlet protected by a Ground Fault Circuit Interrupter (GFCI) to protect against electric shock, fire, and/or injury. Failure to do so will void any warranty for this product.
- The product must have proper, correct and sufficient AC supply voltage.
- Retain this manual in a safe place for future reference.



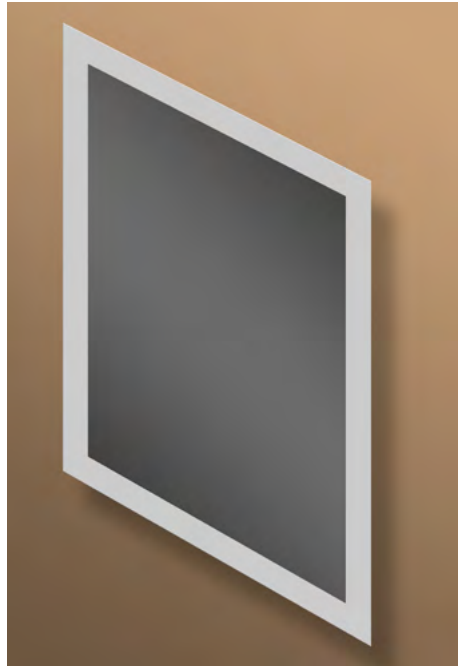
WARNING: Cancer and Reproductive Harm: www.p65warnings.ca.gov.

Parts Included

Before using the device, please check the following contents of the box for completeness. Illustrations are not to scale. Additional parts may be included for custom mirror upgrades.



Lighted Mirror Housing
(Appearance varies by model)



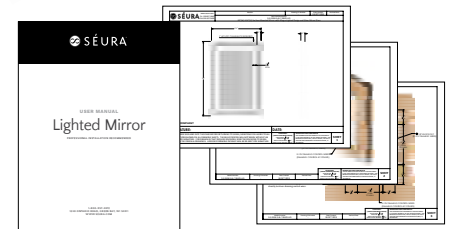
Lighted Mirror Glass
(Appearance varies by model)



Mounting Hardware
Self-Drilling Drywall
Anchors and Screws
(for use when mounting
into drywall and not
wall studs; quantity
varies by mirror size
and may include extras)



UL Plug
(included with Full
Length Mirrors and
Round Mirrors)



Manual and Drawing Package with
installation instructions unique to your
mirror

Parts and Tools Required (not included)



Whip / Hard-Wire Electrical
Cables (required for hard-wire
configuration)



Wire Nuts



4+ Wood Screws
(required if mounting
into wall studs)



Dimmable Switch 0-10V or Triac
(if mirror does not include the optional Dimmable Touch
Button upgrade, then a dimmable switch is required for
mirrors with dimmable lighting)



Protective
Eyewear



Stud Finder



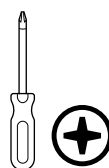
Measuring
Tape



Level



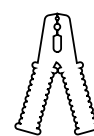
Pencil



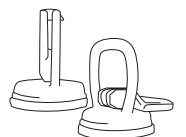
Phillips #2
Screwdriver



Wire Cutter
(required to
reduce the
length of the
whip)



Wire Stripper

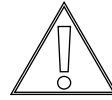


Glass Suction
Cups (optional;
may be useful
in lifting large
mirror sizes and
framed mirrors)

Installation: Hard-Wired Configuration

Step 1: Prepare proper wiring and wall switch.

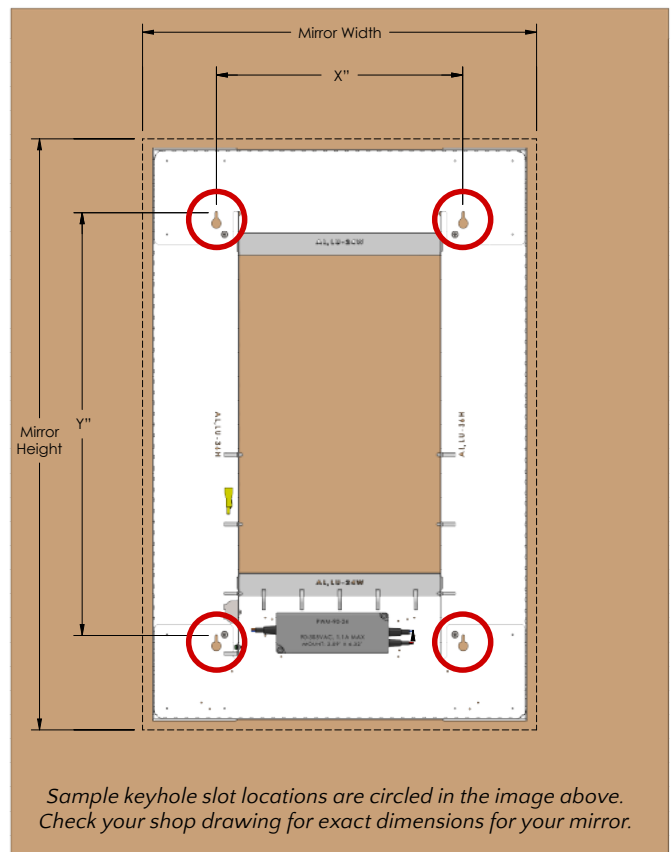
- Turn off the main power before installing the fixture in order to prevent possible electric shock. Locate the circuit breaker control for the room where you'll be working and switch the circuit to off.
- A whip is required for hardwire installation. In other words, you need access to a power cable that comes from a Junction Box in the wall. These extra wires are pre-wired together. Ensure that you are using 3 conductor wire (Black=Live, White=Neutral, Green=Ground). Make sure the length of the whip is long enough to reach from the power box in the wall to the mirror. If the whip is longer than needed, you may choose to use a wire cutter to reduce the length.
- If your mirror includes dimming capability but does not include the optional Dimmable Touch Button upgrade, verify that your wall switch supports dimming functionality. The dimmable switch must be 0-10V or Triac.



IMPORTANT: TURN OFF MAIN POWER TO THE INSTALLATION LOCATION AT THE CIRCUIT BREAKER.

Step 2: Map out the installation area and mount the lighted mirror housing to the wall.

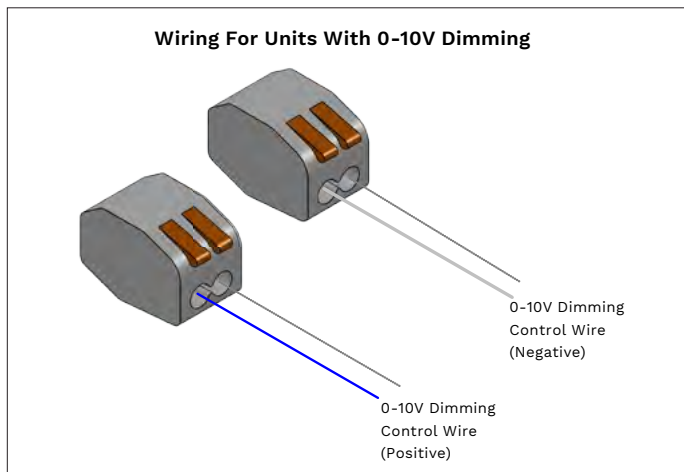
- Locate the keyhole slots on the lighted mirror housing. The number of keyhole slots depends on the mirror size. You may refer to the included drawing package for specific dimensions of your mirror and locations of the keyhole slots.
- Using a measuring tape and level, determine where you want to mount the mirror on the wall and mark the keyhole slots with a pencil on the wall. Ensure the mirror is correctly vertically positioned.
- Use a stud finder to determine if the keyhole slots line up with wall studs. We recommend mounting to wall studs if possible.
- Keyhole slots that line up with a stud require a #10 wood screw that is at least 2-inches long.
- Keyhole slots that do not line up with wall studs require the included Self-Drilling Drywall Anchors located in the hardware box. The drywall should be a minimum ½-inch thick. Using a screwdriver, insert the supplied E-Z Anchor Toggles into the corresponding pencil marks on the wall.
- To set the clamp behind the drywall, place the mounting screw into the anchor and push or tap firmly until approximately 1-inch of the screw is protruding (do not rotate).
- Secure the housing to the wall with screws through the keyhole slots.



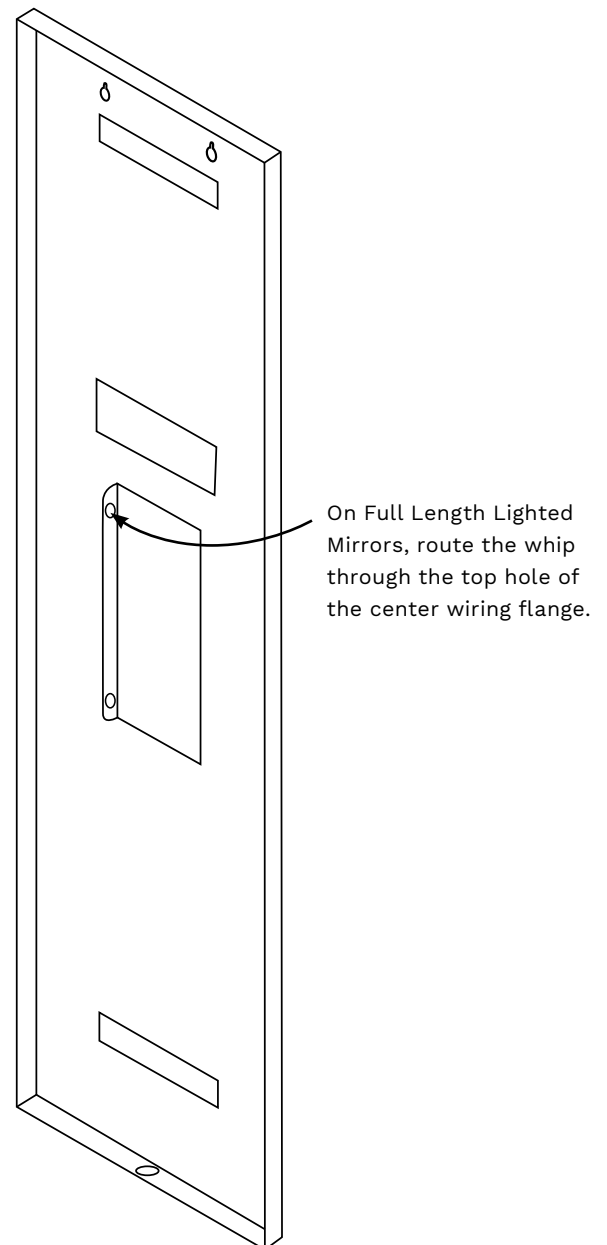
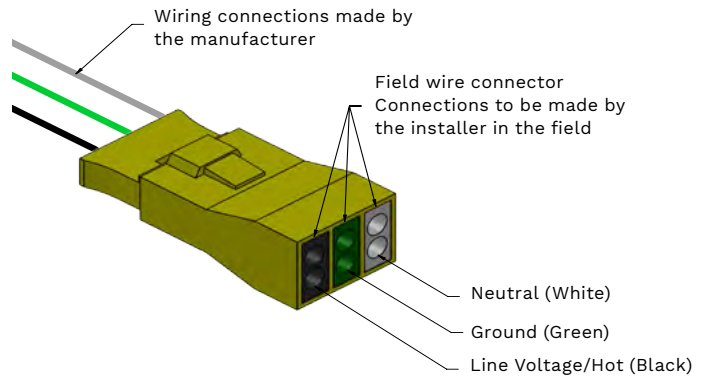
Sample keyhole slot locations are circled in the image above. Check your shop drawing for exact dimensions for your mirror.

Step 3: Make wiring connections.

- Séura lighted mirrors are equipped with an easy-to-install wiring fixture disconnect that can be found on the mirror housing that is now connected to the wall. Refer to your included drawing package to identify the location of the fixture disconnect.
- Connect the whip (extra wires that are pre-wired together) from step 1 to the fixture disconnect. The connection accepts AWG 16 - 12 solid or stranded (19 strands maximum). Using a wire stripper, strip the insulation on the wires back approximately 1/2".
- On Full Length Lighted Mirrors, we recommend routing the whip from step 1 through the top hole of the center wiring flange and then connecting the whip to the wiring fixture disconnect. This will help keep the whip in place so it doesn't appear behind the etched mirror glass.
- Open the fixture disconnect by pushing down on the tab that connects the top and bottom pieces. Connect wires into the fixture disconnect using the color code diagram pictured. Reconnect the top and bottom pieces by sliding them together.
- If using a 0-10V dimmable switch, then connect 0-10V dimming signal directly to the driver dimming control wires.
- Turn the wall switch to on and verify functionality.



Wiring Fixture Disconnect

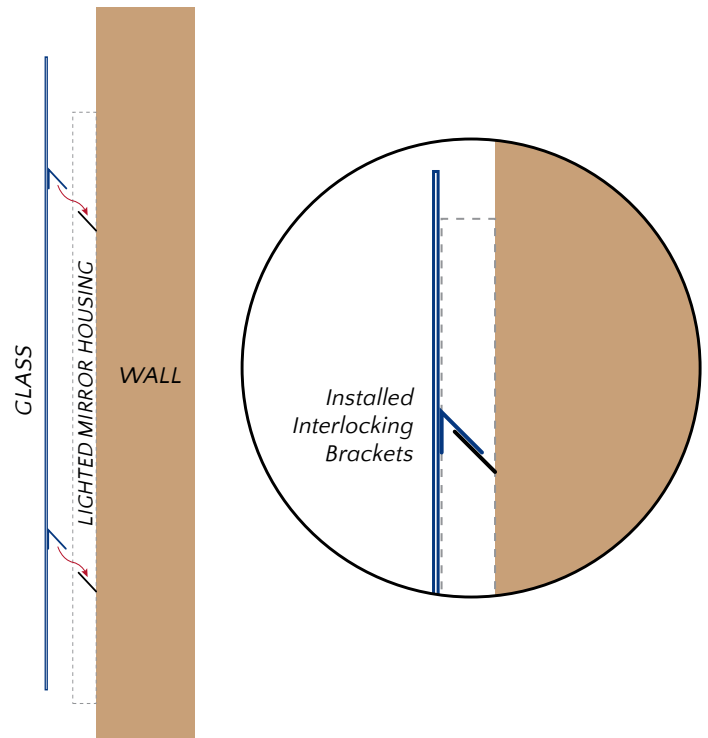


Installation: Hard-Wired Configuration (continued)

Step 4: Hang the mirror

See pages 10-12 for instructions to connect optional upgrades (such as touch buttons, mirror defoggers and more) from the housing to the mirror.

- If the mirror has a decorative frame, do not hold the mirror by the frame. For framed mirrors and large mirrors, we recommend using glass suction cups to lift the mirror.
- Once the wire connections are made, make sure all wires are tucked into the wire saddles. This will prevent wires from getting pinched between the mirror and housing.
- Hang the mirror onto the housing by positioning the mounting brackets on the back of the mirror so they rest on top of the brackets on the housing. Start by holding the mirror slightly higher than the housing and slowly lower the mirror until the mirror brackets rest on the housing brackets.
- Ensure the brackets are interlocked and the mirror is secure by making sure the mirror is level and evenly spaced from the wall. Gently try to move the mirror glass. If you can pull any of the four corners away from the housing, then it's not mounted properly. If the glass moves, it's likely not fully interlocked and you need to repeat this step to align the mounting brackets.



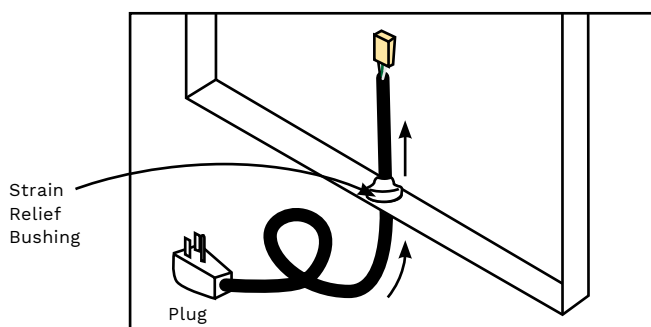
Installation: Plug-In Configuration

Step 1: Prepare proper wall switch.

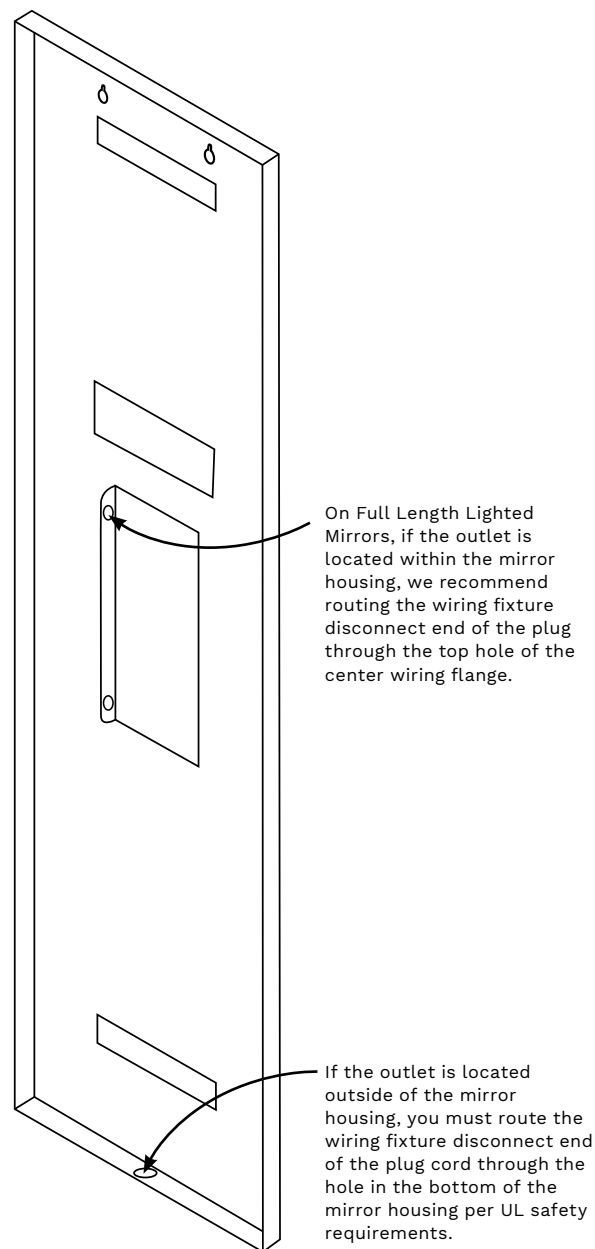
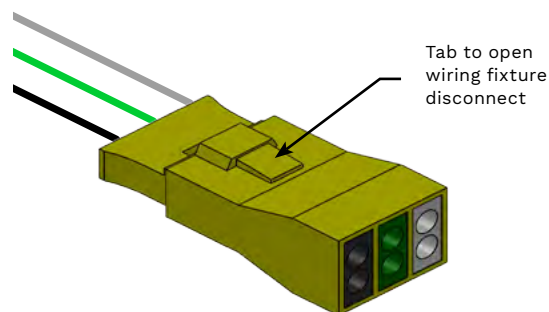
- Ensure a Ground Fault Circuit Interrupter (GFCI) outlet is located near the mirror so the plug cord can reach the outlet. We recommend the outlet be located within the middle open area of the housing for a clean look without a visible cord. A compatible outlet should be installed by a licensed electrician according to local building codes.
- If your mirror includes dimming capability but does not include the optional Dimmable Touch Button upgrade, verify that your wall switch supports dimming functionality. The dimmable switch must be 0-10V or Triac based on the configuration of your personalized mirror.

For Full Length Lighted Mirrors Only: Make plug wiring connection.

- Séura lighted mirrors are equipped with an easy-to-install wiring fixture disconnect that can be found on the mirror housing. Refer to your included drawing package to identify the location of the fixture disconnect.
- Open the fixture disconnect by pushing down on the tab that connects the top and bottom pieces. Discard the top piece or keep it if you decide to change to a hardwire configuration in the future.
- Locate the provided plug that contains a wiring fixture disconnect on one end.
 - If the outlet is located inside of the mirror housing, we recommend routing the wiring fixture disconnect end of the plug cord through the top hole of the center wiring flange. This will keep the cord in place so it doesn't appear behind the etched mirror glass.
 - If the outlet is located outside of the mirror housing, route the wiring fixture disconnect end of the plug cord through a hole in the bottom of the mirror housing. There is a white plastic circular piece at the bottom of the mirror housing that needs to be removed to make the hole. Then push the wiring fixture disconnect end of the cord up through the hole until the strain relief bushing on the cord blocks the hole completely – it should be a snug fit. This is a UL safety requirement. The plug end of the cord should be hanging below the mirror so you can plug it into the wall outlet.
- Connect the two ends of the wiring fixture disconnect by sliding them together to complete the wiring.



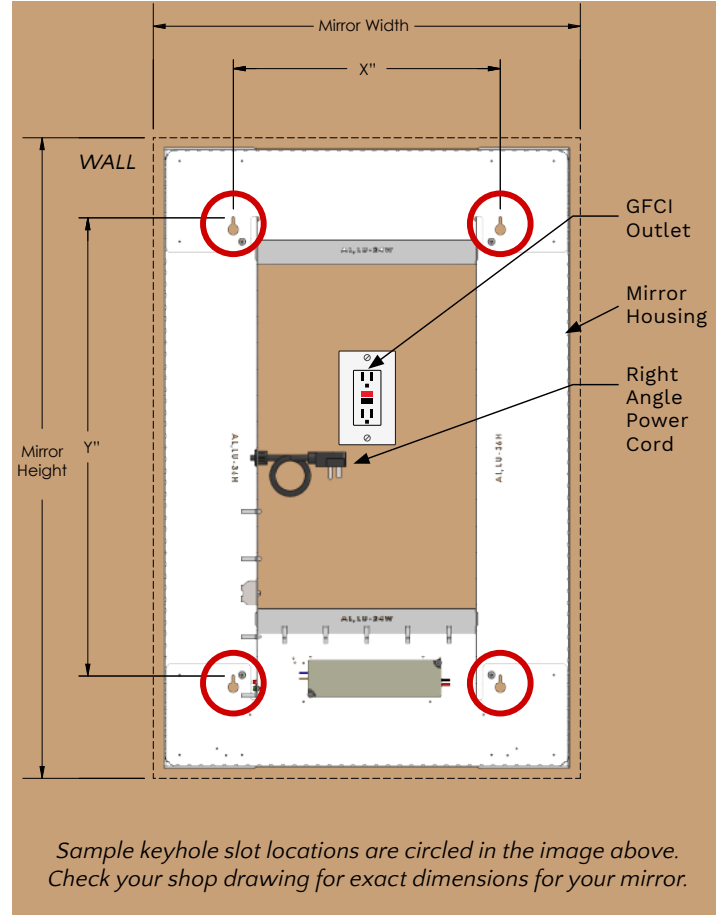
Wiring Fixture Disconnect



Installation: Plug-In Configuration (continued)

Step 2: Map out the installation area and mount the lighted mirror housing to the wall.

- Locate the keyhole slots on the lighted mirror housing. The number of keyhole slots depends on the mirror size. You may refer to the included drawing package for specific dimensions of your mirror and locations of the keyhole slots.
- Using a measuring tape and level, determine where you want to mount the mirror on the wall and mark the keyhole slots with a pencil on the wall. Ensure the mirror is correctly vertically positioned.
- Ensure the GFCI outlet is located within the designated open area of the housing.
- Use a stud finder to determine if the keyhole slots line up with wall studs. We recommend mounting to wall studs if possible.
- Keyhole slots that line up with a stud require a #10 wood screw that is at least 2-inches long.
- Keyhole slots that do not line up with wall studs require the included Self-Drilling Drywall Anchors located in the hardware box. The drywall should be a minimum ½-inch thick. Using a screwdriver, insert the supplied Self-Drilling Drywall Anchors into the corresponding pencil marks on the wall.
- To set the clamp behind the drywall, place the mounting screw into the anchor and push or tap firmly until approximately 1-inch of the screw is protruding (do not rotate).
- Secure the housing to the wall with screws through the keyhole slots.



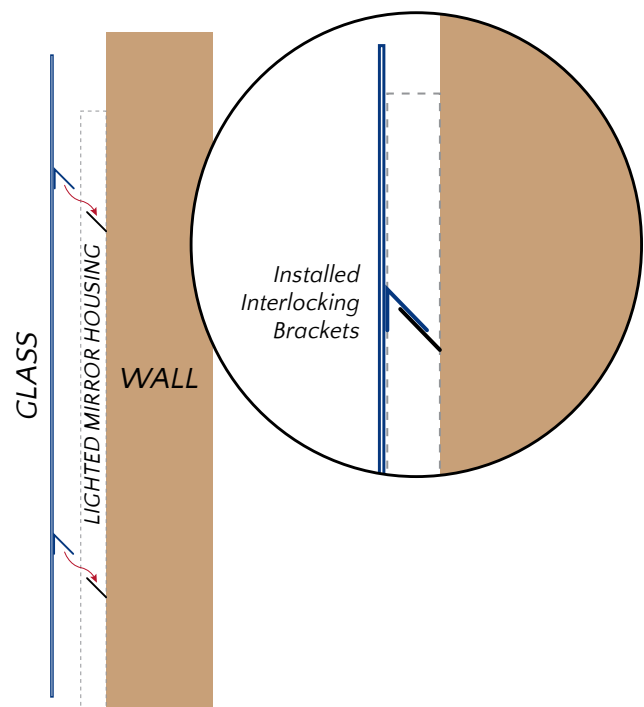
Sample keyhole slot locations are circled in the image above. Check your shop drawing for exact dimensions for your mirror.

Step 3: Plug the lighting power cord into an outlet and verify functionality.

Step 4: Hang the mirror

See pages 10-12 for instructions to connect optional upgrades (such as touch buttons, mirror defoggers and more) from the housing to the mirror.

- Hang the mirror onto the housing by positioning the mounting brackets on the back of the mirror so they rest on top of the brackets on the housing. Start by holding the mirror slightly higher than the housing and slowly lower the mirror until the mirror brackets rest on the housing brackets.
- Ensure the brackets are interlocked and the mirror is secure by making sure the mirror is level and evenly spaced from the wall. Gently try to move the mirror glass. If you can pull any of the four corners away from the housing, then it's not mounted properly. If the glass moves, it's likely not fully interlocked and you need to repeat this step to align the mounting brackets.



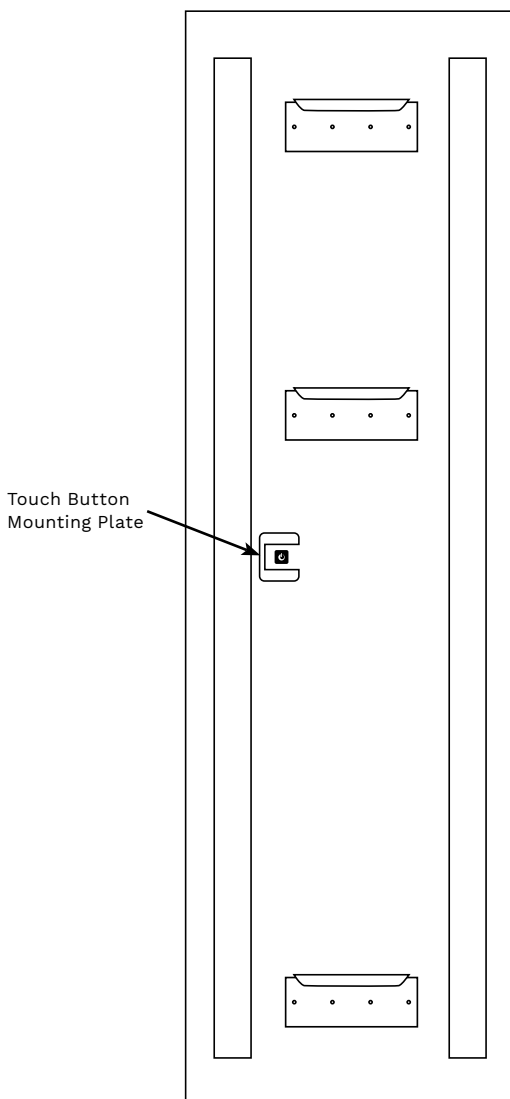
Optional Upgrade: Touch Control Dimming

Included with Full Length Lighted Mirrors

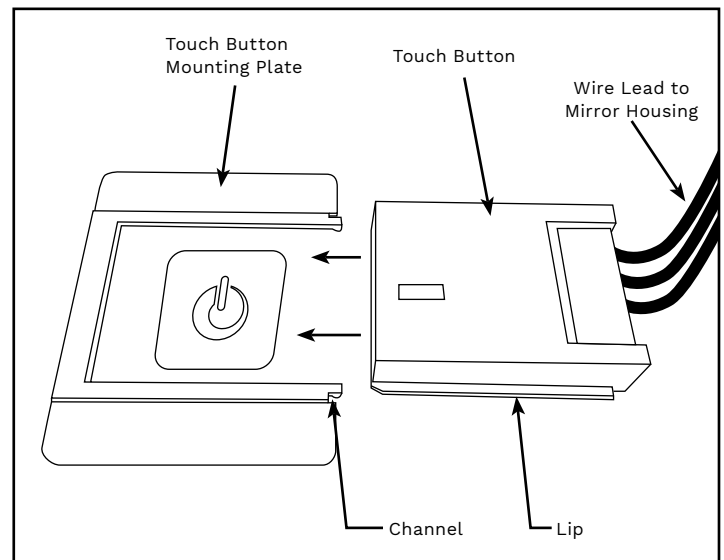
Curate the desired atmosphere with one touch. Use Séura's Touch Control Dimming to conveniently change the intensity level anywhere from dreamy low-light to reviving brightness.

Séura's Touch Control Dimming button comes attached to the mirror housing with a wire lead. The button icon is etched into the mirror glass and surrounded by the touch button mounting plate. Bring the mirror glass close to the mirror housing (which should already be mounted to the wall) and slide the touch button into the touch button mounting plate. The button slides from the inside of the mirror towards the edge of the mirror glass as shown. There is a channel on the button that slides into the lip on the touch button mounting plate for a secure fit. Do not use extreme force – the button should slide in smoothly.

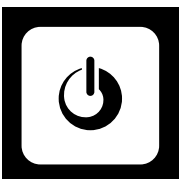
The button will illuminate when the mirror has power. Verify functionality.



Button Module Installation Back View



The touch button has a lip that slides into the channel on the touch button mounting plate.



Operating the Touch Control Dimming button:

Tap the button to power the lights on and off. Touch and hold to dim brightness levels in increments from 100% full brightness down to 10% ambient low-lighting. Lift your finger off the button to stop at the preferred brightness. Select your desired brightness before turning the mirror lights off and your setting will be resumed next time you turn the mirror lights on.

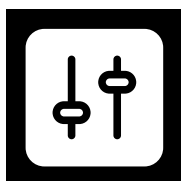
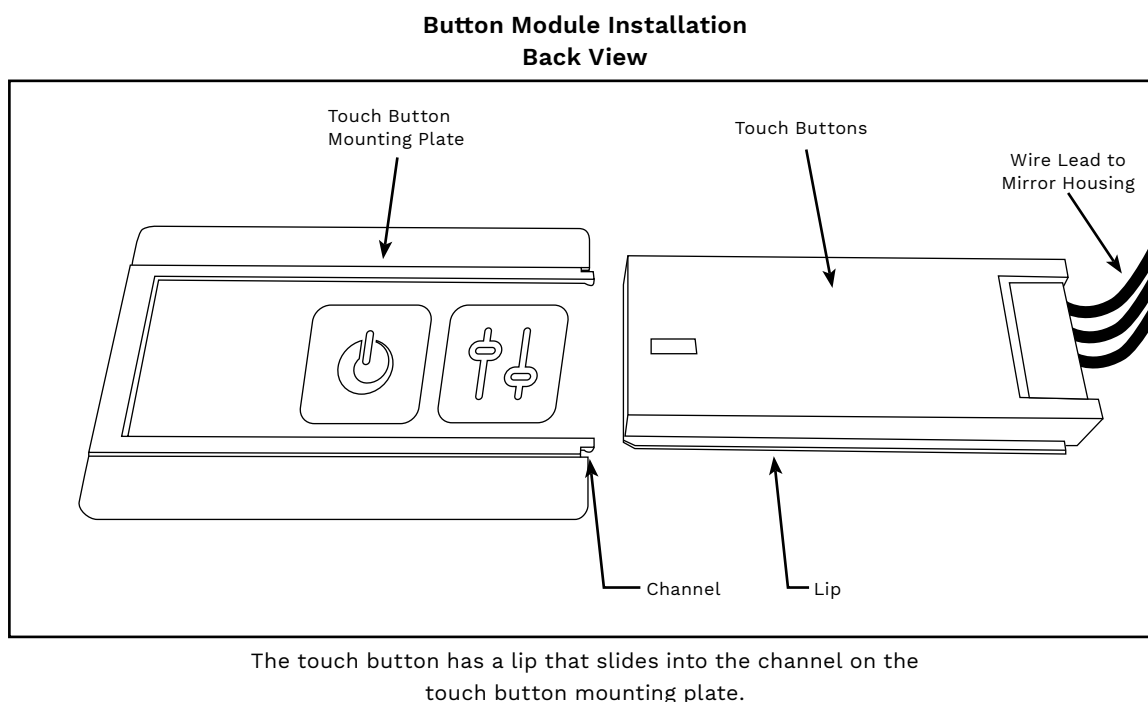
Optional Upgrade: Touch Control Color Temperature

Touch Control Color Temperature must be paired with Touch Control Dimming. See page 10 for Touch Control Dimming installation and operating instructions.

Whether you're energizing your morning routine with cool, clean white, or winding down for a good night's sleep with a warm and inviting glow, tune your light color with the in-mirror touch sensor.

Séura's Touch Control buttons come attached to the mirror housing with a wire lead. The button icons are etched into the mirror glass and surrounded by the touch button mounting plate. Bring the mirror glass close to the mirror housing (which should already be mounted to the wall) and slide the touch buttons into the touch button mounting plate. The buttons slide from the inside of the mirror towards the edge of the mirror glass. There is a lip on the buttons that slides into the channel on the touch button mounting plate for a secure fit. Do not use extreme force – the buttons should slide in smoothly.

The buttons will illuminate when the mirror has power. Verify functionality.



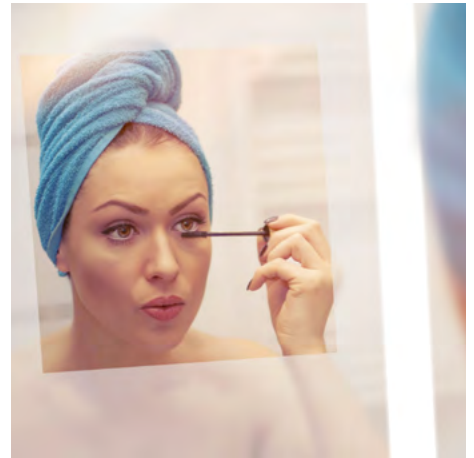
Operating the Touch Control Color Temperature button:

When the mirror is powered on, the energy-efficient button illuminates and senses your touch. Tap to quickly advance to pre-set temperatures or touch and hold to gradually adjust. Lift your finger off to stop at your desired setting. Select your desired color temperature before turning the mirror lights off via the Touch Control Dimming button and your setting will be resumed next time you turn the mirror lights on.

Optional Upgrade: Defogger

Expect a clear view every time, with a mirror that remains clean and spotless after steamy showers. Séura's defogger warms the mirror's surface so there's no need to wipe away drips and streaks or wait for the condensation to clear.

After mounting the lighted mirror housing and making field wiring connections to the fixture, then it's time to hard wire the defogger. There are two wires on the back of the mirror that are on the defogger. Using a wire stripper, strip approximately 1/2" segment off the end of each wire lead. Bring the mirror close to the housing. Connect the two wires to the neutral and 120 VAC source. It doesn't matter which wire is connected to which. You will need two wire nuts (one for each wire) to connect to the 120 VAC source.

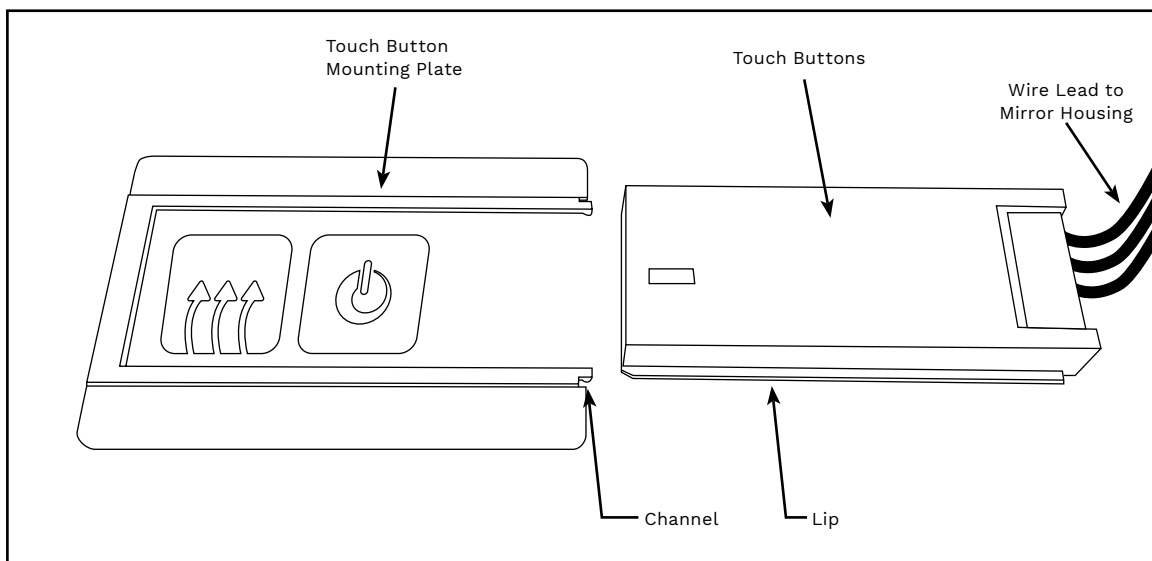


Touch Control Defogger:

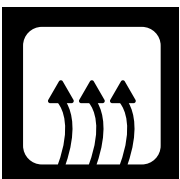
Séura's Touch Control button(s) come attached to the mirror housing with a wire lead. The button icon(s) are etched into the mirror glass and surrounded by the touch button mounting plate. Bring the mirror glass close to the mirror housing (which should already be mounted to the wall) and slide the touch button(s) into the touch button mounting plate. The button(s) slide from the inside of the mirror towards the edge of the mirror glass. There is a lip on the buttons that slides into the channel on the touch button mounting plate for a secure fit. Do not use extreme force – the button(s) should slide in smoothly.

The Touch Control Defogger button will illuminate when the defogger is turned on. Verify functionality.

Button Module Installation Back View



The touch button has a lip that slides into the channel on the touch button mounting plate.



Operating the Touch Control Defogger button:

When the mirror is powered on, the energy-efficient button senses your touch. One tap turns the defogger on and off. The button illuminates to indicate the defogger is on.

Optional Upgrade: Night Light

Just a warm glow of sleep-inducing low light is all you need, so you can drift back to dreamland easily. This small night light is hidden below the bottom edge of the mirror so it casts light downward and matches your sleek, functional style.

The night light can be wired to your control preference. Choose from having the night light always on 24/7, on when the main lighting is off, or controlled by a separate wall switch or Séura's in-mirror touch control button.

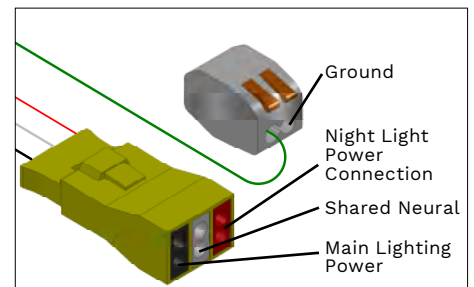
Touch Control Night Light:

Séura's Touch Control button(s) come attached to the mirror housing with a wire lead. The button icon(s) are etched into the mirror glass and surrounded by the touch button mounting plate. Bring the mirror glass close to the mirror housing (which should already be mounted to the wall) and slide the touch button(s) into the touch button mounting plate. The button(s) slide from the inside of the mirror towards the edge of the mirror glass. There is a lip on the button(s) that slides into the channel on the touch button mounting plate for a secure fit. Do not use extreme force – the button(s) should slide in smoothly.

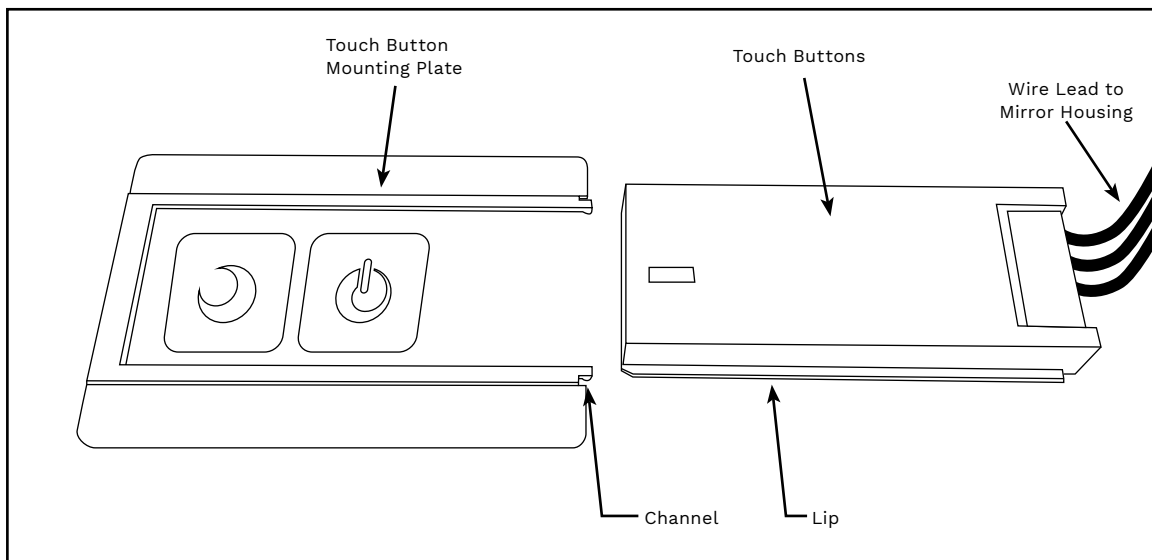
The button(s) will illuminate when the mirror has power. Verify functionality.



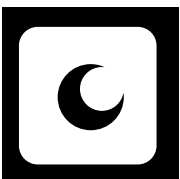
Night light wiring for units with main lighting and night light only



Button Module Installation Back View



The touch button has a lip that slides into the channel on the touch button mounting plate.



Operating the Touch Control Night Light button:

When the mirror is powered on, the energy-efficient button illuminates and senses your touch. One tap turns the night light on and off. Powered separate from the mirror lighting, save energy by only using it when needed.

Optional Upgrade: Touch Control Clock and Dimming

Your day begins with reflecting timeliness, and an LED clock conveniently integrated with your mirror keeps you focused so you're out the door on time. With in-mirror controls, it's easy to set the time and tune the light to complement your mood or activity.

Séura's Touch Control Clock and Dimming button comes attached to the mirror housing with a wire lead. The button icon is etched into the mirror glass and surrounded by the touch button mounting plate. Bring the mirror glass close to the mirror housing (which should already be mounted to the wall) and slide the touch button into the touch button mounting plate. The button slides from the inside of the mirror towards the edge of the mirror glass. There is a lip on the button that slides into the channel on the touch button mounting plate for a secure fit. Do not use extreme force – the button should slide in smoothly.

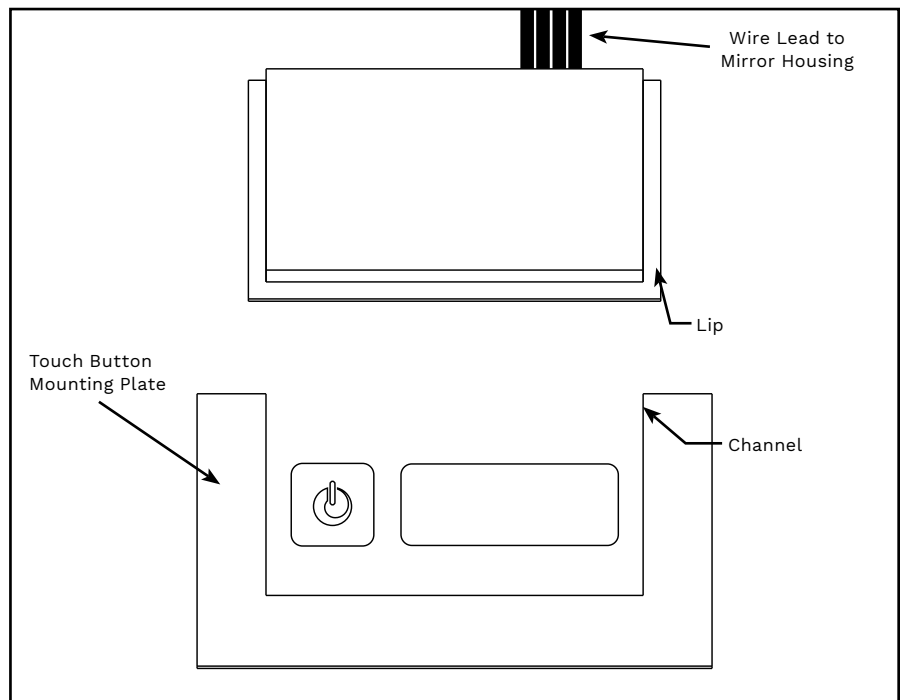


The button will illuminate when the mirror has power. Verify functionality.

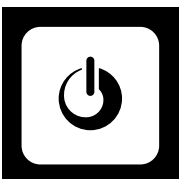
Clock setting instructions:

1. Tap touch button to turn mirror lights off while ensuring wall switch is on
2. Press and hold button for 3 seconds until hour digits flash
3. Continue to hold until the correct hours are set
4. Once the hour is correct, press and hold button again until minute digits flash
5. Continue to hold until the correct minutes are set
6. Release button and the clock will exit the time adjustment mode after 5 seconds of inactivity

Button Module Installation Back View



The touch button has a lip that slides into the channel on the touch button mounting plate.



Operating the Touch Control Dimming button:

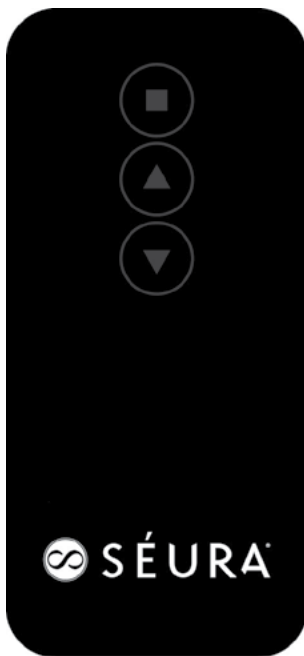
Tap the button to power the lights on and off. Touch and hold to dim brightness levels in increments from 100% full brightness down to 10% ambient low-lighting. Lift your finger off the button to stop at the preferred brightness. Select your desired brightness before turning the mirror lights off and your setting will be resumed next time you turn the mirror lights on.

Optional Upgrade: Digital Clock

Stay on time with an elegant, in-mirror digital clock. Conveniently set and adjust the time with an easy-to-use IR remote.

After mounting the lighted mirror housing and making field wiring connections to the fixture, then it's time to hard wire the digital clock. There are two wires on the back of the mirror that are on the clock. One wire is positive and one is negative. Insert the two wires into the wire nuts that are connected to the power supply on the mirror housing. The wires are color coordinated – the red wire goes into the red lead and the black wire goes into the black lead.

After installation, program the clock using the Séura remote control.



Clock setting instructions:

1. Press the square until minutes flash
2. Move up/down arrows to select minutes
3. Press the square and hours digits will flash
4. Move up/down arrows to select hours
5. Press the square again to exit clock setting mode

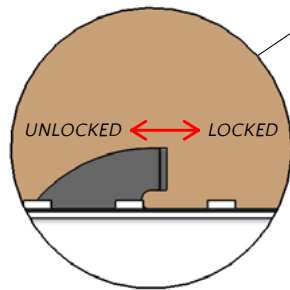
Optional Upgrade: Security Latch

Intended for public commercial properties and hotels, Séura's security latch prevents unwanted tampering and damage to the mirror.

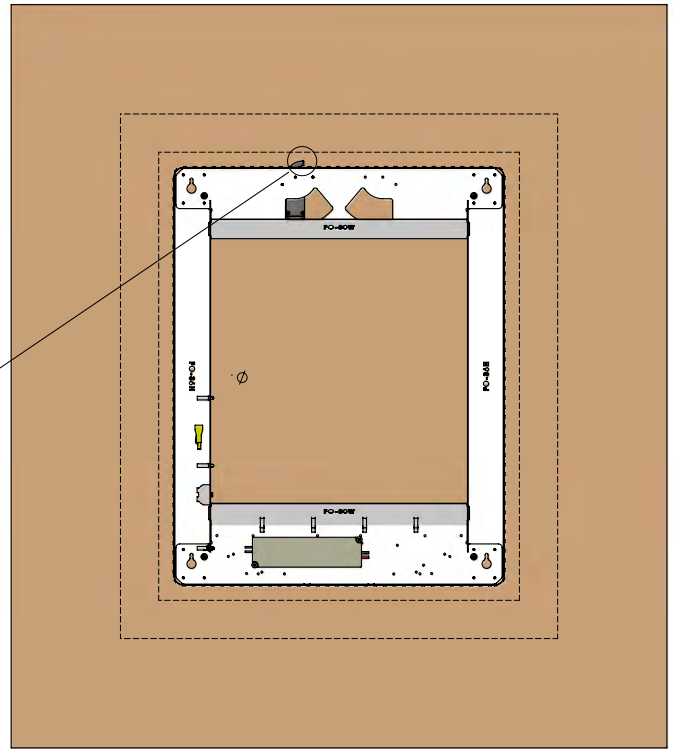
After mounting the housing to the wall and before hanging the mirror, move the security latch to the locked position. Then hang the mirror onto the housing.

To remove the mirror from the housing, move the security latch to the unlocked position.

Turn the wall switch to on and verify functionality.



SECURITY LATCH DETAIL VIEW
(LATCH SHOWN IN LOCKED POSITION)



Care and Maintenance

Séura's patented mirror glass coatings have been developed to protect the mirror surface and allow easy maintenance.

- The glass surface should be cleaned with any conventional non-ammoniated glass cleaner. Care should be taken to use only a soft lint-free cloth. Apply all cleaners directly to the cloth and not the mirror surface. Never saturate the mirror surface as residual cleaner may seep behind the mirror.
- Stubborn spots can be removed with solvents such as mineral spirits, de-natured alcohol, and acetone. Immediately remove solvent and dirt residues per the prescribed methods above with a compatible glass cleaner or water.

Decorative frames should be cleaned using a clean, soft cloth to wipe dust and dirt off.



LIMITED PRODUCT WARRANTY

For information regarding Séura's warranty policy, please visit our website: www.seura.com/warranty. If the current Séura warranty policy is after your product purchase date, please contact Séura Customer Support to request warranty documentation from the date of your purchase.

For additional customer support, please contact Séura.

Toll Free: 1-800-957-3872 (Monday - Friday 8:00 am – 4:30 pm, Central Time)

Website: www.seura.com/support