

# 15" Marvel Outdoor All Refrigerator

Model # MO15RAS2\*



## Premium Features

- Dynamic Cooling Technology™ rapidly cools and delivers the industry's most even temperature stability
- Marvel Prime™ controls for precise, frost-free temperature management between 34° and 42° F
- Audible alarms for door ajar and high/low temperature ensure your contents stay at optimal temperature
- Thermal-efficient insulated cabinet ensures optimum energy efficiency and cooling performance
- Two fully-adjustable, cantilever FreshFlo™ stainless steel slide-out shelves
- Door lock provides added security
- Efficient white LED lighting illuminates arctic white interior
- Close Door Assist System™ gently finishes closing the door
- Corrosion-resistant stainless steel exterior, sturdy pro-style handle and rugged 4" adjustable flat toe grill
- Filler kit available for 18" wide opening
- Height adjustment up to 1" with leveling legs
- 1-year warranty

## Storage Capacity

Up to 70 12-oz cans  
2.7 cu. ft.

## Storage Configuration

(2) cantilevered, fully adjustable slide-out stainless steel shelves

## Product Dimensions

14 7/8" W x 33 3/4" minimum H x 26 7/32" D (including handle)



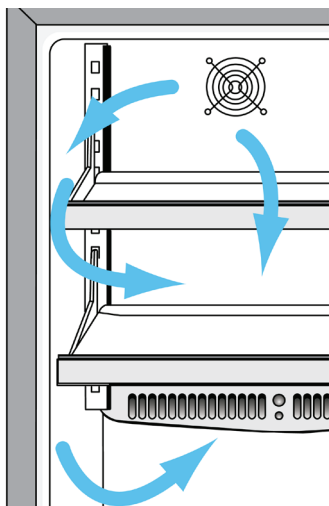
Ordering Details*	Model Number
Solid Stainless Steel Door with Lock, Right Hinge	MO15RAS2RS
Solid Stainless Steel Door with Lock, Left Hinge	MO15RAS2LS

# The Essential Elements of Outdoor Living



## Dynamic Cooling Technology™

Rapidly cools and delivers the industry's best temperature stability



**Certified for performance to withstand the elements**

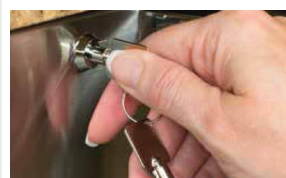
**Tested to 115° F**



Corrosion-resistant stainless steel exterior, sturdy pro-style handle and rugged toe kicks

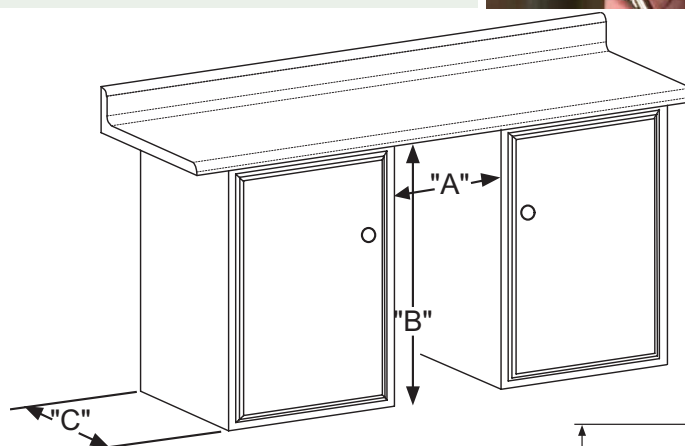


Energy-efficient appliances with precise temperature management



Security locks standard on all refrigerators and dispensers

Specifications	
Width	14 7/8"
Interior Finish	White
Capacity	Up to 70 12-oz cans
Shelving System	Cantilever
Shelf Fronts	Stainless Steel
Other Storage	N/A
Interior Lighting	1 White LED Pod
Handle	Professional
Temperature Range	34° - 42° F
Lock	Yes
Length of Power Cord	5'
Product Dimensions without Door	14 7/8" W x 33 3/4" H x 21 1/2" D
Depth to Front of Door	23 23/32"
Depth to Handle	26 7/32"
Depth with door at 90°	37 13/32"
Shipping Weight	125lbs



15" Rough-In Dimensions		
"A"	"B"	"C"
15" (38.1 cm)	**34" to 35" (86.4 cm to 88.9 cm)	24" (61 cm)

Cabinet Dimensions		
"D"	"E"	"F"
14 7/8" (37.8 cm)	33 3/4" to 34 3/4" (85.7 to 88.3 cm)	23 23/32" (60.2 cm)
"G"	"H"	"J"
26 7/32" (65.2 cm)	37 13/32" (95 cm)	16 11/16" (42.4 cm)

