

Out Of Line

Caracole

Drawing the eye with its distinctive design, this tall chest introduces a bold, modern graphic to any interior. Thin wood strips applied to the door panels create texture and a linear labyrinth for added dimension. Generous storage on the left offers five drawers with side guides and open storage on top, complemented by three adjustable shelves on the right and a full-length mirror on the back of the door for dressing. Tapered legs in Champagne Gold lend a brilliant accent and warm metallic.



SKU: CLA-020-054

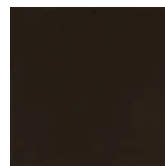
Dimensions in Inches: 42.5W × 18.0D × 62.0H

Dimensions in CM: 107.95W × 45.72D × 157.48H

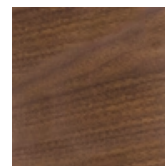
Features:

- Case finished in Dark Chocolate.
- Metal base in Champagne Gold.
- Two doors with fronts in Rich Walnut and right door with mirrored back.
- Left interior features five drawers with side guides. Open storage area at top.
- Right side features three adjustable shelves.
- Interior in Almost White.

Finish:



Dark Chocolate



Rich Walnut



Almost White

