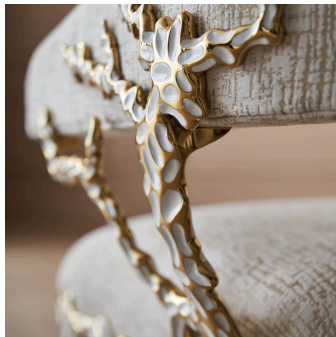


# Glimmer Of Hope

Caracole

Bold in character, this dazzling chair is unique in every way. Its one-of-a-kind shape was born from design exploration of the organic beauty and inspiration found in nature. Cast in solid brass and finished in Gold Brush with white enamel, it has the feel of branches or coral reaching up toward the light. Richly upholstered in a soft, textured neutral, this remarkable creation conveys an attitude of modern opulence.



**SKU:** UPH-419-231-A

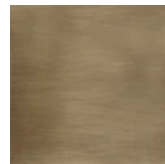
**Dimensions in Inches:** 27.25W × 27.25D × 32.5H

**Dimensions in CM:** 69.215W × 69.215D × 82.55H

## Features:

- Tight seat and back.
- Custom designed metal frame with white enamel inlay.

## Finish:



Gold Brush

## Fabric:



4100-41CC-P Performance

**Construction:** Plush poly foam cushion.