

# Counter Balance Chair

Caracole

A perfect alignment of texture, material and design intention lends a soft-lined yet sophisticated style to seating areas. Dressed in an oatmeal melange woven fabric with subtle rust threading, its comfortable design features channel-tufted arms and a loose back cushion, propped by a faux-leather-wrapped, counter balance capped in Brushed Gold. Reeded cast legs add tactile appeal and a note of distinction.



**SKU:** UPH-022-032-A

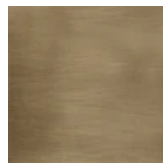
**Dimensions in Inches:** 36.5W × 38.25D × 25.5H

**Dimensions in CM:** 92.71W × 97.155D × 64.77H

## Features:

- Fully upholstered.
- Metal legs finished in Brushed Gold.
- Decorative wood rods behind top cushion.

## Finish:

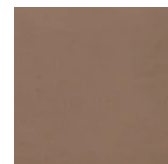


Brushed Gold

## Fabric:

IMAGE  
COMING  
SOON

4128-30CC-P Performance



9176-78CC

**Construction:** 8-way hand tied seat Spring