



# Espresso Maker

## use & care

Introduction.....	2	Care & Cleaning .....	11
Important Safety Information .....	3	Troubleshooting.....	13
Features.....	5	Warranty.....	15
Controls & Operation.....	6		

## Welcome to our family

This manual is your resource for the use and care of your product. Please read it before using your Espresso Machine. Keep it handy for quick reference. If something doesn't seem right, the troubleshooting section will help you with common issues.

Visit Owner Support on [www.frigidaire.com](http://www.frigidaire.com) for access to FAQs, how-to videos and articles, accessories and cleaning products.

We are here for you! Visit our website, chat with an agent, or call us if you need help. If you do need service, we can get that started for you.

For Peace of Mind Protection, register your product. Locate your registration card and/or label on your product with the photo register icon.


Keep your product info here so it's easy to find.

Model Number: \_\_\_\_\_

Serial Number: \_\_\_\_\_

Purchase Date: \_\_\_\_\_

### Definitions

 This is the safety alert symbol. It is used to alert you to potential personal injury hazards. Obey all safety messages that follow this symbol to avoid possible injury or death.



#### **DANGER**

**DANGER** indicates an imminently hazardous situation which, if not avoided, will result in death or serious injury.



**Intertek**

Conforms to UL Std.1082

Certified to CSA Std. CSA C22.2  
No.60335-1&60335-2-15

### ATTENTION

Please read all instructions related to your product and keep this manual for your future reference. Follow all the warnings and instructions described in this manual to better use your product and get better results.

### ENVIRONMENT

Frigidaire is committed to offering products that have less impact on the environment, thus contributing to the sustainable development. Electronic equipment, cells and batteries must be disposed of separately from ordinary waste. If your equipment has cells or batteries, when they are replaced or discarded, they must be sent to an Frigidaire Authorized Service so that they have a suitable destination. Environmentally sound preparation of packaging and products at the end of life is everyone's responsibility.



#### **CAUTION**

**CAUTION** indicates a potentially hazardous situation which, if not avoided, may result in minor or moderate injury.



#### **WARNING**

**WARNING** indicates a potentially hazardous situation which, if not avoided, could result in death or serious injury.



#### **IMPORTANT**

**IMPORTANT** indicates installation, operation or maintenance information which is important but not hazard-related.

## IMPORTANT SAFEGUARDS

### SAFETY PRECAUTIONS

Read all instructions before using the electric appliance. The following basic precautions should always be followed.

- Children shall not play with the appliance. Cleaning and user maintenance shall not be performed by children without supervision. Close supervision is necessary when the appliance is being used by or near children.
- Please keep the appliance and the power cord out of the reach of children.
- After unpacking the appliance, keep the packaging material out of reach of children.
- This appliance is intended for normal household use only.
- Check that the supply voltage is the same as the product label before connecting it.
- Unplug the appliance and allow it to cool before cleaning
- Do not use the appliance if the plug, the main cord or the appliance itself is damaged. Always make sure that the plug is inserted properly into a wall outlet.
- Regularly inspect the appliance and power cord. If the power cord is damaged or broken, it must be replaced by a service agent or similarly qualified persons to avoid safety hazards
- Always return the appliance to an authorized service center for examination or repair. Do not attempt to repair the appliance yourself.
- Keep the power cord away from hot surfaces or sharp objects to avoid damage. Do not use an extension cord. Do not use an outlet under the counter.
- Do not excessively pinch, bend, twist or place heavy objects on the power cord to prevent from exposing or breaking its shielding. Do not use the electrical cord to pull or drag the product
- Do not let cord hang over the edge of table or counter, or touch hot surfaces.
- Always attach plug to appliance first, then plug cord into the wall outlet. To disconnect, turn the unit off, then remove plug from wall outlet.
- Never unplug the product from the outlet by pulling on the electrical cable, use the plug.
- The accessible surfaces may become hot during use. Do not touch hot surfaces. Use handles. Keep hair and clothing away from heated parts of the appliance.
- Do not place the appliance on or near a hot gas or electric burner, or in a heated oven. Do not use outdoors.
- Always place the appliance on a flat, level surface.
- To protect against fire, electric shock and injury to persons, do not immerse cord, plugs or any other part of the appliance in water or other liquid.
- Do not remove the water tank during the brewing cycle as scalding may occur.
- Do not remove the filter holder during the brewing process or when there's steam / hot water flowing from the filter holder as the appliance is pressurized.



### DANGER

There is risk of scalding from hot water.

- Release pressure through hot water/ steam nozzle before removing filter holder.



### WARNING

Avoid steam burns

# IMPORTANT SAFEGUARDS

- The heating element surface is subject to residual heat.
- When the steam function is used there can be some hot water dripping from the brewing head.  
**DANGER! The water is hot, there is a risk for scalding.**
- When operating the steam knob there is a shot of hot water coming out. Be careful and open the steam valve slowly. **DANGER! The water is hot, there is a risk for scalding.**
- Do not exceed the maximum filling volume as indicated on the appliance.
- Fill the water tank only with cold water, never with milk or other liquids. Always use fresh water to brew espresso to promise the best taste.
- Do not use the appliance if the water tank is empty.
- Do not use the appliance without the drip tray or drip grid, unless a larger cup/mug is in use.
- The use of accessory attachments not recommended by the appliance manufacturer may result in fire, electric shock or injury to persons.
- This appliance is not intended to be operated by means of an external timer or separate remote-control system.
- This appliance is not intended to be used in household and similar applications such as:
  - staff kitchen areas in shops, offices and others working environments;
  - farm houses;
  - by clients in hotels, motels and other residential type environments;
  - bed and breakfast type environments.

This appliance has a polarized plug (one blade is wider than the other). To reduce the risk of electric shock, this plug is intended to fit into a polarized outlet only one way. If the plug does not fit fully into the outlet, reverse the plug. If it still does not fit, contact a qualified electrician. Do not attempt to modify the plug in any way.



## WARNING

Avoid spillage on the connector.

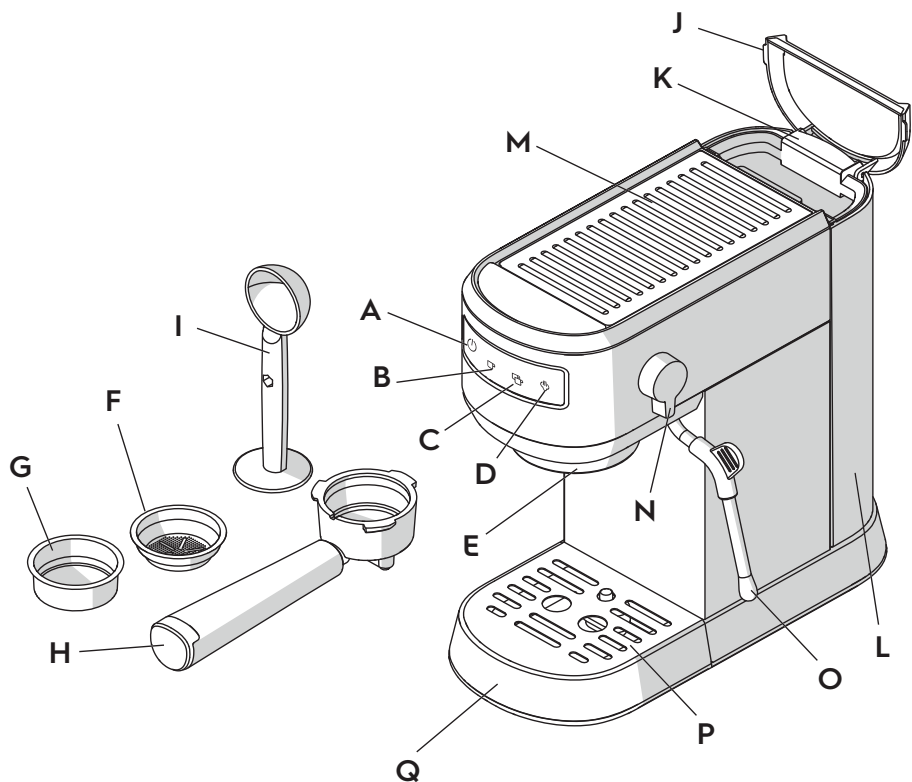
- This appliance is intended for domestic/normal household use only. Not for commercial use. Do not use Outdoors. Do not use the appliance for other than the intended use. The manufacturer cannot accept any liability for possible damage caused by improper or incorrect use.



## WARNING

**CALIFORNIA RESIDENTS ONLY:**  
**For cancer and reproductive harm**  
**information visit:**  
**[www.P65Warnings.ca.gov](http://www.P65Warnings.ca.gov)**

**FOR HOUSEHOLD USE ONLY**  
**SAVE THESE INSTRUCTIONS FOR**  
**FUTURE REFERENCE.**



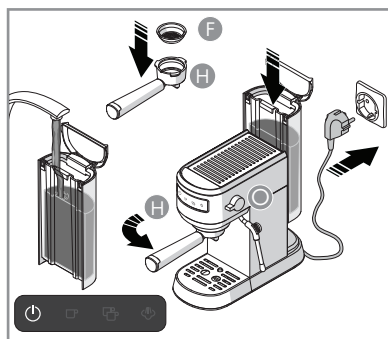
A. Power Button	J. Water Tank Lid
B. One-shot Button	K. Water Tank Handle
C. Two-shot Button	L. Water Tank
D. Steam Button	M. Cup Warmer
E. Brewing Head	N. Steam Knob
F. One-shot Filter Cup	O. Hot Water/Steam Nozzle (Milk Frother)
G. Two-shot Filter Cup	P. Drip Grid
H. Filter Holder	Q. Drip Tray
I. Tamper/Measuring Spoon	

# 6

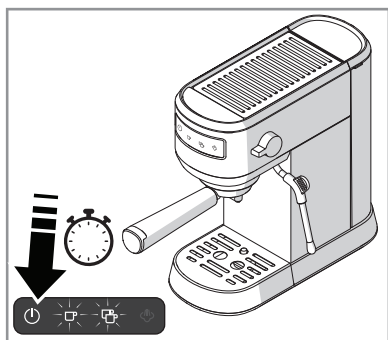
## CONTROLS & OPERATION

### Getting Started

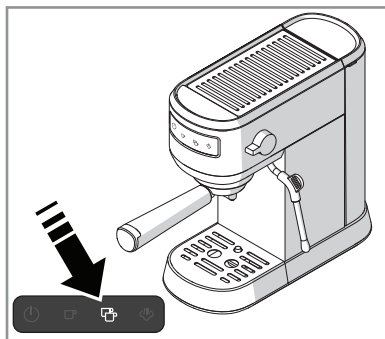
1. Place the machine on a flat surface. The Power Indicator button lights up once the machine is plugged in. Remove the water tank and pull out the orange water stopper from the bottom. Fill up the water tank with fresh, cold water and replace at the back of the unit. Put filter cup (F) into filter holder (H) and turn counter-clockwise from **INSERT** to **LOCK** position. Make sure the steam knob (O) is at the **OFF** (horizontal) position.



2. Press the power button. The cup buttons blink for up to 40 seconds while the unit warms up.



3. Preheating is complete when the buttons stop blinking. Press the Single or Double shot button to start the brewing process.



### NOTE

When water is pumped through the machine for the first time, you may hear some noise while any air inside the machine is released. This process lasts about 20 seconds.

4. Once the brew cycle is finished, turn the Filter Holder (H) clockwise to remove. The machine is now ready to use.

### NOTE

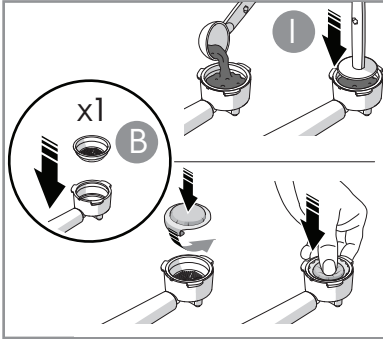
Perform steps 1-4 twice before using the machine for the first time.

### NOTE

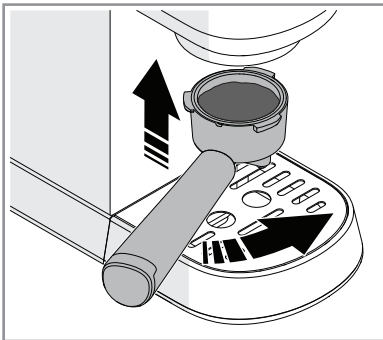
The machine enters standby after 20 minutes of inactivity.

## Make Espresso

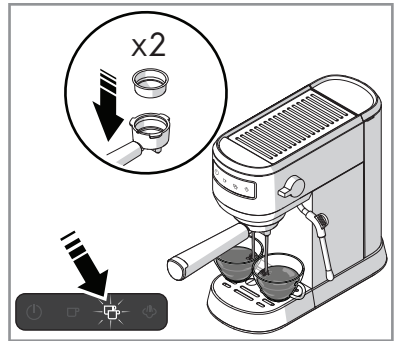
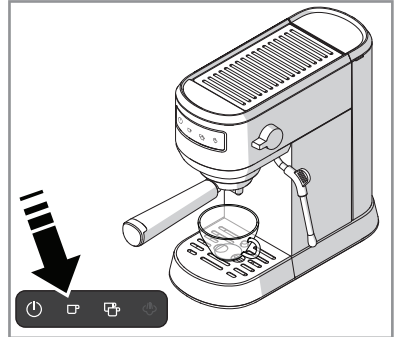
1. Put the one-shot filter (F) or the two-shot filter (G) into the filter holder. Add one spoon of ground espresso for each shot and press it tight with tamper (I) or thumb.



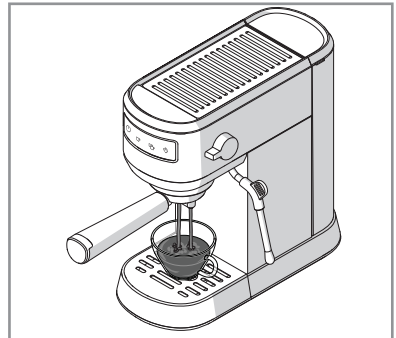
2. Turn the Filter Holder counter-clockwise from the **INSERT** to **LOCK** position to attach it to the brewing head. If the handle will not lock or is hard to push into the lock position, remove some grounds from the filter and try again. The filter handle should easily move into the lock position.



3. Put a warm cup no taller than 3.5" on the drip tray. When the Power and Cup buttons are solid, press either the One or Two-cup button to start brewing.

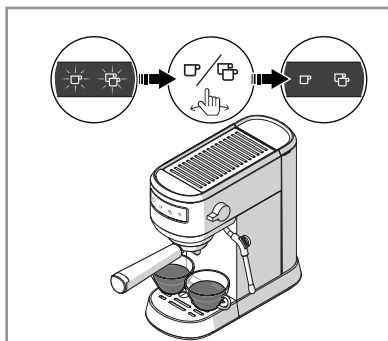


4. The espresso will flow out after a short moment. Wait 10 seconds for the espresso to stop dripping and remove your cup.

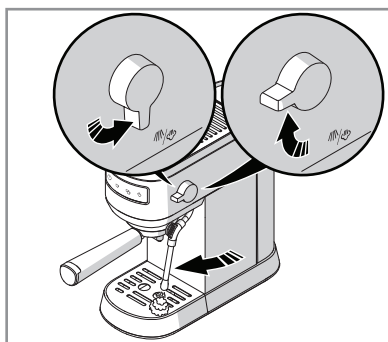


### NOTE

Buttons will blink if the boiler is too hot as a warning it needs to cool down.

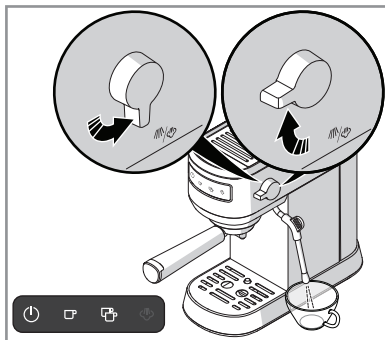


5. To brew another shot, follow steps 1-4 but be aware that brewing can only restart once the boiler has cooled. Turn the Steam knob from the steam position and release hot water from steam nozzle. The pump shuts off once cooled. Turn the knob off to resume brewing.



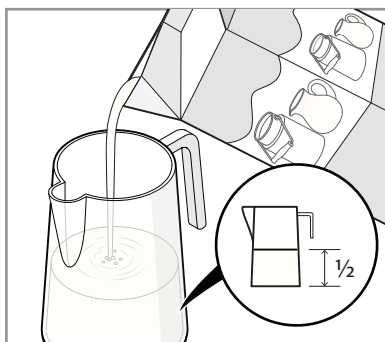
### Make Hot Water

1. In Ready Mode when the Power and Cup buttons are lit, turn the Steam knob to the on position for hot water to come out of the steam nozzle.
2. Turn the knob to the off position when the desired amount is reached.



### Froth Milk and Make Cappuccino/Latte

1. Fill a pitcher with 3.4 oz (100ml for cappuccino) or 6.75 oz (200 for latte) milk.

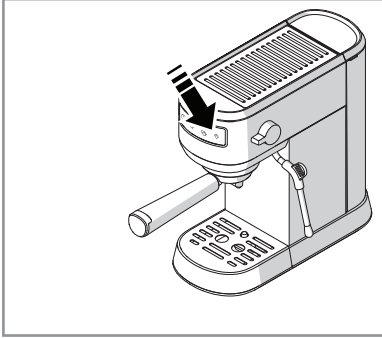


### NOTE

Make sure the pitcher diameter is larger than 2.75 (70mm) inches, and that the pitcher capacity can hold at least twice the milk volume after frothing is completed.



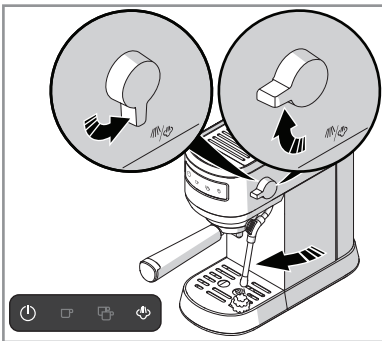
2. Press the Steam button when in Ready mode. The Steam button starts blinking while the water is heating up.



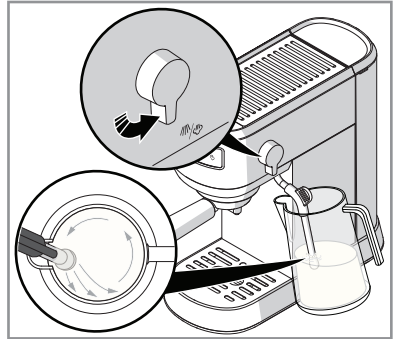
## NOTE

Use chilled, **NOT HOT**, whole milk. Results will vary based on the milk fat content.

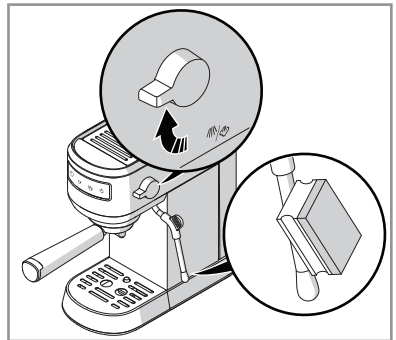
3. The Steam button stops blinking once the froth function is ready. Before frothing the milk, ensure the Steam nozzle is over the drip tray. Turn the Steam knob to the Steam position and release steam until no water comes out, then turn the Steam knob to the **OFF** position.



4. Place the pitcher under the steam nozzle and immerse in milk about 1/4" before turning on the knob. Make sure the steam nozzle is positioned so the milk turns in one direction in the pitcher from top to bottom.



5. Turn off the knob and remove the pitcher when the desired level of foam is reached.



## NOTE

Clean the steam nozzle with a wet sponge immediately after the steam stops coming out.

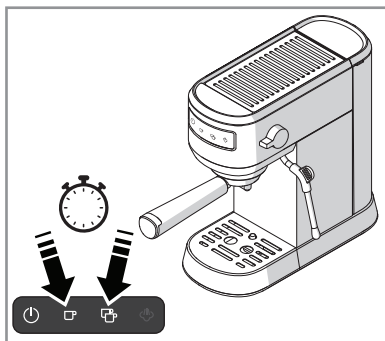
The pump shuts off automatically after frothing for 3 minutes.

# 10 CONTROLS & OPERATION

6. Pour the frothed milk into the prepared espresso. Sweeten to taste and sprinkle the froth with cocoa powder if desired.



2. Press and hold the cup buttons for 3 seconds to restore factory volume settings.

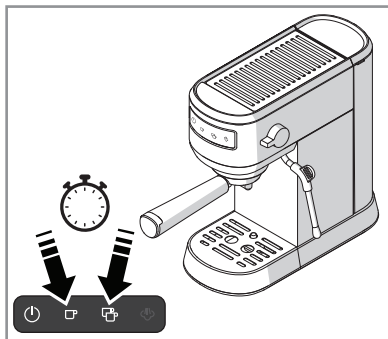


## NOTE

After using the steam function, make sure the boiler has cooled. Press either of the cup buttons to brew again. If both cup buttons rapidly blink when pressed, allow the boiler to cool down, then attempt to brew again.

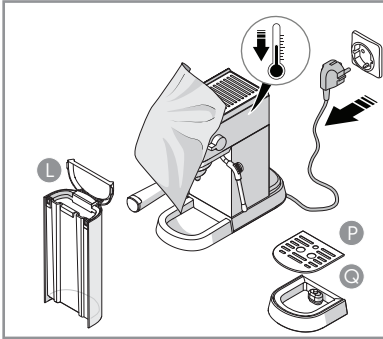
## Favorites/Volume

1. In Ready mode when the Power and Cup buttons are lit, press and hold the cup buttons for 3 seconds to enter reset mode. Press a cup button to set the volume then press again to confirm and save the volume level.

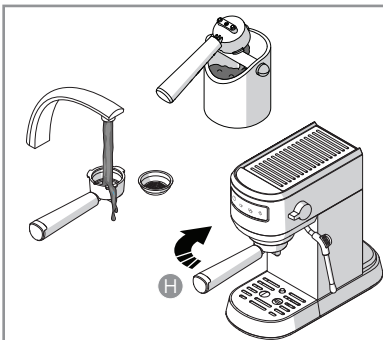


## Cleaning

1. Turn the machine off and unplug the power cord. Let the machine cool down completely before cleaning. Wipe all outer surfaces with a damp cloth.

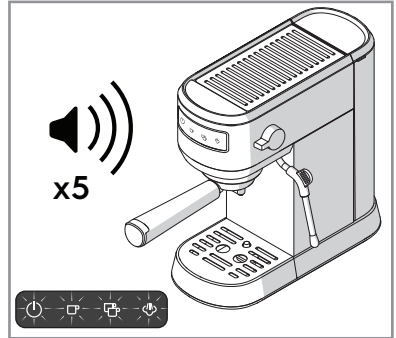


2. Clean the water tank (L), drip tray (Q) and drip grid (P) regularly. Never use caustic or abrasive cleaners, and never immerse the machine in liquid. Do not put components in the dishwasher.
3. Turn the Filter Cup Holder(H) clockwise to detach. Clean out any coffee residue then remove the Filter Cup from the Filter Holder. Rinse all parts with clean water and dry thoroughly.



## Descaling

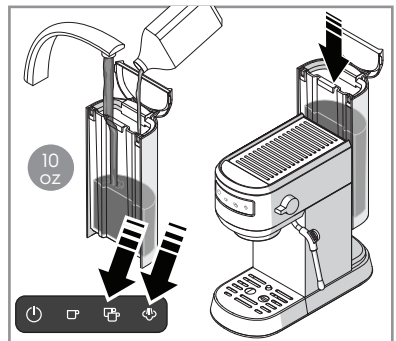
1. Descaling is recommended when all indicators blink 5 times with 5 beeps when powering the machine on. The descaling warning will repeat 2 more times each time when you turn on the appliance if you do not perform descaling or cancel.



### NOTE

Press and hold both Cup buttons, and the steam button 3 seconds to cancel the descaling warning.

2. Add 10oz (300ml) of water to the water tank, then add a descaling agent. You can also use a 1:1 water and vinegar solution.



**NOTE**

Use only an environmentally friendly descaling agent and always follow the manufacturer's instructions.

3. In Ready mode when the Power and Cup buttons are lit, long press the Two Cup and Steam Buttons for 3 seconds to start the descaling process. The Cup and Steam buttons will blink slowly during descaling. The machine will return to stand-by mode once descaling completes.

**Disposal**

The packaging materials can be recycled. Please sort individual components by type and dispose them in applicable containers according to local disposal instructions. Recycling packaging materials reduces the use of raw materials and amount of waste in landfill sites. Help protect the environment by recycling your packaging.



This symbol on the product or on its packaging indicates that the product may not be treated as household waste. Return the product to your local recycling

facility or contact your municipal office.

Electrolux reserves the right to change products, information and specifications without notice.

Problem	Possible Cause	Solution
Water leaking from the bottom of coffee maker	There is too much water in the drip tray	Clean the drip tray
	The coffee maker has malfunctioned	Please contact the authorized service facility for repairing
Water leaks outside of filter cup	Coffee grounds on the filter cup edge when locked into the brewing head	Clean the filter cup
Acidic taste exists in espresso coffee	Descaling was not performed correctly	Clean the machine as outlined in steps 1-4 in the Getting Started Section
	The coffee grounds have expired	Use fresh coffee. Tightly reseal opened coffee and store it in a refrigerator to maintain its freshness
The espresso maker does not respond	The power outlet is not plugged in	Plug the power cord into a grounded outlet. If the appliance still does not work, please contact customer service
The steam / milk froth function does not work properly	The Steam indicator is not lit	The steam function can be used to perform milk frothing only when the steam indicator is lit
	The container is too big	Use a tall cup or professional milk frothing pitcher
	Skim milk was used	Use whole or 2% milk
The Steam indicator is quickly blinking	The steam knob was not reset after making steam for 3 minutes	Reset the steam knob by turning it to the OFF, and then Steam position
Cup indicators are quickly blinking	The steam knob was not reset after creating steam for a cup of coffee	Reset the steam knob by turning it to the OFF, and then Steam position
	The steam knob has not been reset after cooling down	
	Boiler temperature is too high	Allow the machine to cool down
Cup and Steam indicators are quickly blinking	The steam knob is not reset, but the machine is turned on.	Reset the steam knob by turning it to the OFF, and then Steam position

# 14

## TROUBLESHOOTING

---

Problem	Possible Cause	Solution
ALL indicators blinking 5 times	Need descaling	Descalc the machine
Filter holder is too tight to remove	The filter cup is overfilled	Remove some coffee grounds from the filter cup
Coffee flows out too slowly	Too much coffee in the filter cup	Remove some coffee grounds from the filter cup
	The coffee is ground too finely and tamped too tightly into the filter cup	Tamp coffee grounds with less force, or grind coffee less finely
	The filter cup is blocked	Clean the filter cup with the cleaning pin

Model	FREM100SS
Voltage	120V
Frequency	60Hz
Power	1350W
Pressure	20 Bar
Color	Stainless Steel

Your appliance is covered by a one year limited warranty. For one year from your original date of delivery, Electrolux will pay all costs for repairing or replacing any parts of this appliance that prove to be defective in materials or workmanship when such appliance is installed, used and maintained in accordance with the provided instructions.

## Exclusions

**This warranty does not cover the following:**

1. Products with original serial numbers that have been removed, altered or cannot be readily determined.
2. Product that has been transferred from its original owner to another party or removed outside the USA or Canada.
3. Rust on the interior or exterior of the unit.
4. Products purchased "as-is" are not covered by this warranty.
5. Products used in a commercial setting.
6. Service calls which do not involve malfunction or defects in materials or workmanship, or for appliances not in ordinary household use or used other than in accordance with the provided instructions.
7. Service calls to correct the installation of your appliance or to instruct you how to use your appliance.
8. Expenses for making the appliance accessible for servicing, such as removal of trim, cupboards, shelves, etc., which are not a part of the appliance when it is shipped from the factory.
9. Service calls to repair or replace appliance light bulbs, air filters, other consumables, or knobs, handles, or other cosmetic parts.
10. Pickup and delivery costs; your appliance is designed to be repaired in the home.
11. Surcharges including, but not limited to, any after hour, weekend, or holiday service calls, tolls, ferry trip charges, or mileage expense for service calls to remote areas, including the state of Alaska.
12. Damages to the finish of appliance or home incurred during transportation or installation, including but not limited to floors, cabinets, walls, etc.
13. Damages caused by: services performed by unauthorized service companies; use of parts other than genuine Electrolux parts or parts obtained from persons other than authorized service companies; or external causes such as abuse, misuse, inadequate power supply, accidents, fires, or acts of God.

## DISCLAIMER OF IMPLIED WARRANTIES; LIMITATION OF REMEDIES

CUSTOMER'S SOLE AND EXCLUSIVE REMEDY UNDER THIS LIMITED WARRANTY SHALL BE REPAIR OR REPLACEMENT AS PROVIDED HEREIN. CLAIMS BASED ON IMPLIED WARRANTIES, INCLUDING WARRANTIES OF MERCHANTABILITY OR FITNESS FOR A PARTICULAR PURPOSE, ARE LIMITED TO ONE YEAR OR THE SHORTEST PERIOD ALLOWED BY LAW, BUT NOT LESS THAN ONE YEAR. ELECTROLUX SHALL NOT BE LIABLE FOR CONSEQUENTIAL OR INCIDENTAL DAMAGES SUCH AS PROPERTY DAMAGE AND INCIDENTAL EXPENSES RESULTING FROM ANY BREACH OF THIS WRITTEN LIMITED WARRANTY OR ANY IMPLIED WARRANTY. SOME STATES AND PROVINCES DO NOT ALLOW THE EXCLUSION OR LIMITATION OF INCIDENTAL OR CONSEQUENTIAL DAMAGES, OR LIMITATIONS ON THE DURATION OF IMPLIED WARRANTIES, SO THESE LIMITATIONS OR EXCLUSIONS MAY NOT APPLY TO YOU. THIS WRITTEN WARRANTY GIVES YOU SPECIFIC LEGAL RIGHTS. YOU MAY ALSO HAVE OTHER RIGHTS THAT VARY FROM STATE TO STATE.

## If You Need Service

Keep your receipt, delivery slip, or some other appropriate payment record to establish the warranty period should service be required. If service is performed, it is in your best interest to obtain and keep all receipts. Service under this warranty must be obtained by contacting Electrolux at the addresses or phone numbers below.

This warranty only applies in the USA, Puerto Rico and Canada. In the USA and Puerto Rico, your appliance is warranted by Electrolux Major Appliances North America, a division of Electrolux Home Products, Inc. In Canada, your appliance is warranted by Electrolux Canada Corp. Electrolux authorizes no person to change or add to any obligations under this warranty. Obligations for service and parts under this warranty must be performed by Electrolux or an authorized service company. Product features or specifications as described or illustrated are subject to change without notice.

USA & Puerto Rico  
1-800 374 4432  
Electrolux Home Products, Inc.  
10200 David Taylor Drive  
Charlotte, NC 28262

**FRIGIDAIRE**

Canada  
1-800 265 8352  
Electrolux Canada Corp.  
5855 Terry Fox Way  
Mississauga, Ontario,  
Canada L5V 3E4

# FRIGIDAIRE®

welcome **home.**

Our home is your home. Visit us if you need help with any of these things:



owner support



accessories



service



registration

(See your registration card  
for more information.)

Frigidaire.com  
1-800-374-4432

Frigidaire.ca  
1-800-265-8352