

DA 3698

Built-in ventilation hood
with motorized pull-out canopy for maximum convenience.



- Elegant design - extremely slim canopy with a width of 35 1/8 (892)Inch
- Unique user convenience – Con@ctivity
- Energy-efficient and uniform illumination - 3 LED ClearView Lighting
- Energy-efficient and quiet

EAN: 4002516024088 / material number: 10876720

Construction type	
Built-in ventilation hood	•
Design	
Color	Stainless steel
Operating modes	
Recirculated mode	Convertible
OdorFree charcoal filter (order separately)	DKF19-1
Control panel	
Electronic controls	•
Light-touch controls	•
Power levels (number excl. Intensive)	3
Intensive setting	•
Programmable 'Intensive' switch-off	•
Delayed shutdown for 5 or 15 minutes	•
Programmable grease filter saturation indicator	•
Programmable charcoal filter saturation indicator	•
Hood in Motion	•
Cleaning convenience	
Easy-to-clean CleanCover hood liner	•
Efficiency and sustainability	
Eco package	•
Networking of domestic appliances	
Miele@home	•
WiFiConn@ct	•
Automatic function Con@ctivity 2.0 (Zigbee)	•
Filter system	
Number of dishwasher-safe stainless steel grease filters	2
Lighting	
LED ClearView lighting	•
Light intensity in Lx	500
Color temperature in K	3,500
Light dimmer function	•
Blower	
Dual-action blower	•
DC motor	•
Safety	
Safety shut-off	•
Technical data	
Canopy width in in.(mm)	35 1/8 (892)
Height of hood canopy in in.(mm)	1 1/2 (37)
Depth of hood canopy in in.(mm)	12 1/4 (309)
Minimum distance above electric cooktops in in.(mm)	24 1/8 (610)
Minimum height above gas cooktop (max. 12.6 kW total power, burner 4.5 kW) in mm	26 (660)
Net weight in lbs. (kg)	42 (19.0)
Length of electrical wire in ft (m)	4 (1.5)
Standard plug fitted	•
Total connected load in kW	0.36
Voltage in V	120
Fuse rating in A	15
Number of phases	1

More information at www.MieleUSA.com

For further information please see next page...

DA 3698

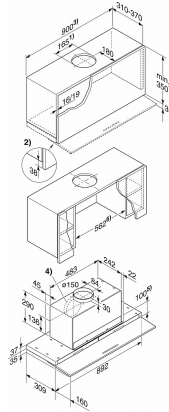
Built-in ventilation hood
with motorized pull-out canopy for maximum convenience.



Installation notes	
Vent connection at top	•
Vent connection at top and rear	•
Diameter of vent connection in in.(mm)	6 (150)
Combination with WiFi-enabled Miele cooktop	required
Standard accessories	
Non-return flap	•
Wireless stick Con@ctivity 2.0 for KM	XKS 3000 Z

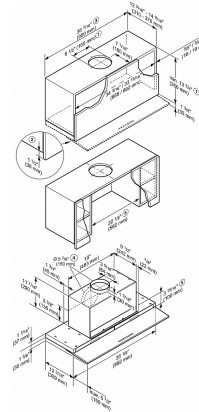
DA 3698

Built-in ventilation hood
with motorized pull-out canopy for maximum convenience.



DA 3698 (Installation drawing)

1. Vented, recirculation with DUU 150.
2. Housing unit carcass is 38 mm shorter than the door. This also applies to adjacent cabinets when the appliance is installed in a 600 mm wide housing unit.
3. Installation is also possible in a 60 cm wide housing unit. In this case, the door of the housing unit must open upwards (top-hinged) to enable access to grease filters. This also applies to adjacent cabinets.
4. Vent connection alternatively to the rear.
5. After the wall unit has been installed, a partition can be fitted. The slots for grease filters and odour-absorbing filters for use in recirculation mode must be accessible.
6. Alternatively, side sections can be added to the wall unit. In regard to dimensions for wall unit height and cut-outs, fitted accessories should be taken into account (e.g. silencers, XKM module).



DA 3698, DA 3698 EXT (Installation drawing) - US

1. Vented, recirculation with DUU 150.
2. Housing unit carcass is 38 mm shorter than the door. This also applies to adjacent cabinets when the appliance is installed in a 600 mm wide housing unit.
3. Installation is also possible in a 60 cm wide housing unit. In this case, the door of the housing unit must open upwards (top-hinged) to enable access to grease filters. This also applies to adjacent cabinets.
4. Vent connection alternatively to the rear.
5. After the wall unit has been installed, a partition can be fitted. The slots for grease filters and odour-absorbing filters for use in recirculation mode must be accessible.
6. Alternatively, side sections can be added to the wall unit. In regard to dimensions for wall unit height and cut-outs, fitted accessories should be taken into account (e.g. silencers, XKM module).