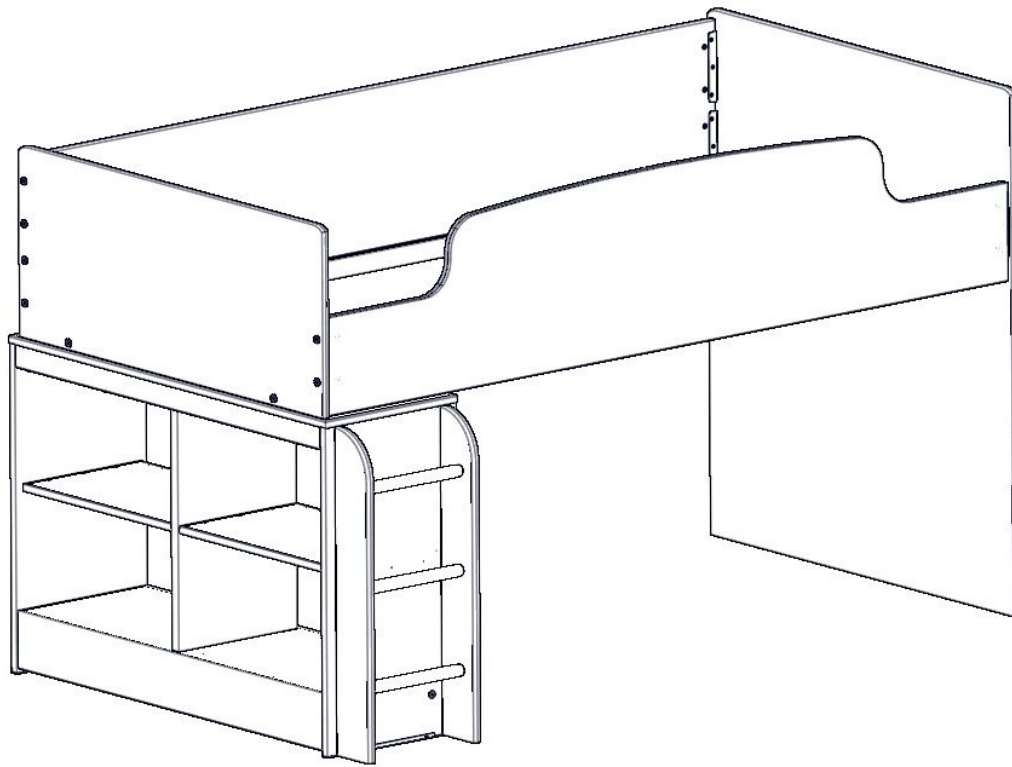
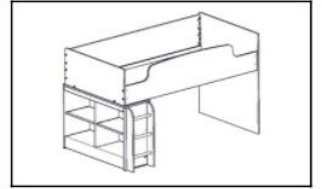


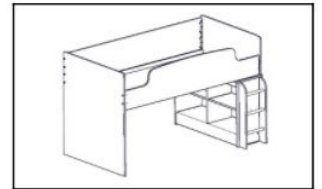
121406 Loft Bed Assembly Instructions



Left Configuration

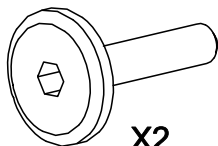


Right Configuration

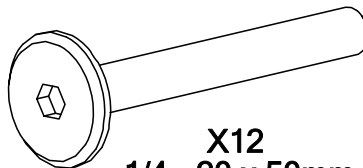


Hardware Components

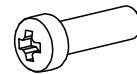
This bag contains small parts that present a choking hazard for children under 3 years of age. These parts are for adult assembly only and should be permanently affixed to the furniture. Any unused parts should be discarded properly.



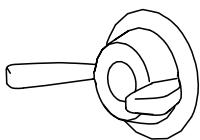
X2
1/4 - 20 x 25mm
Joint Connector



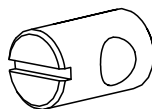
X12
1/4 - 20 x 50mm
Joint Connector



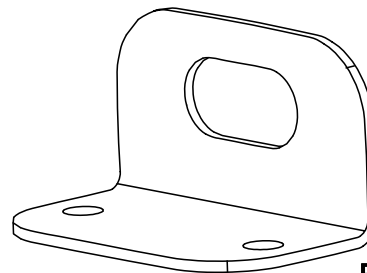
X4
#8 x 5/8" PH P/S PBS



X2
1/4 - 20 Wing Nut

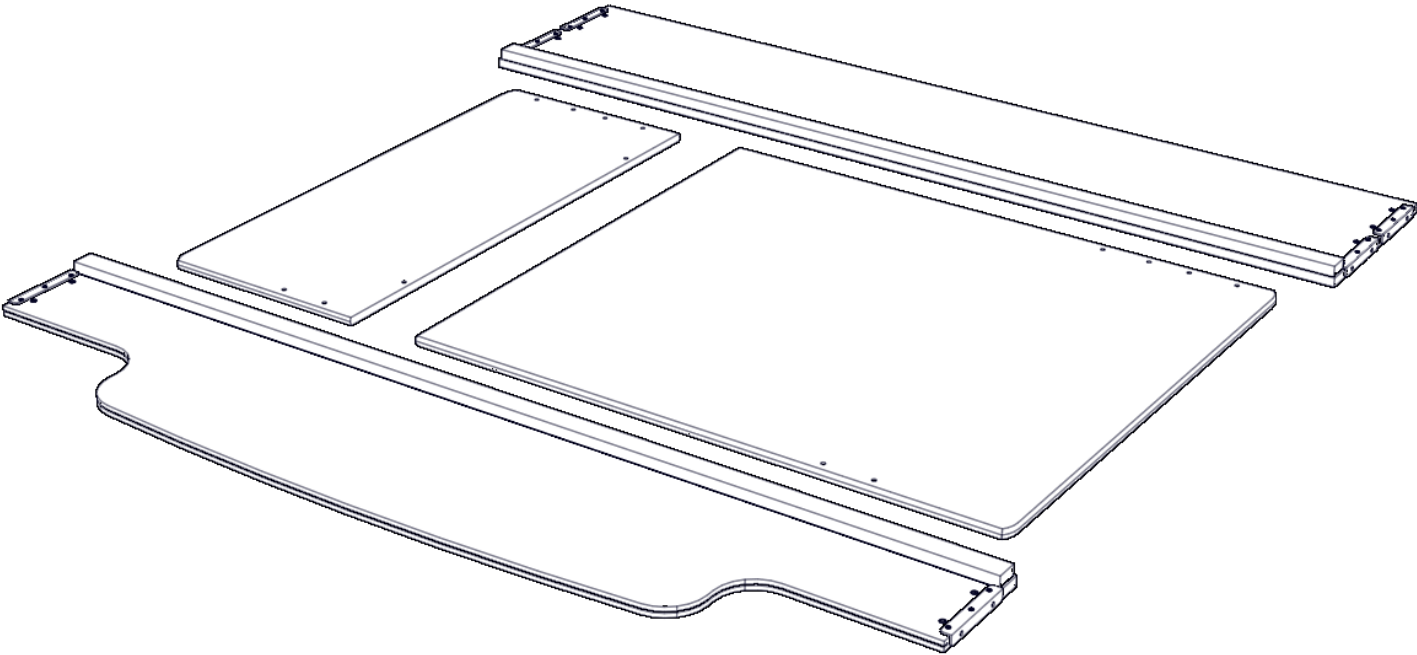


X12
1/4 - 20 Cross Dowel

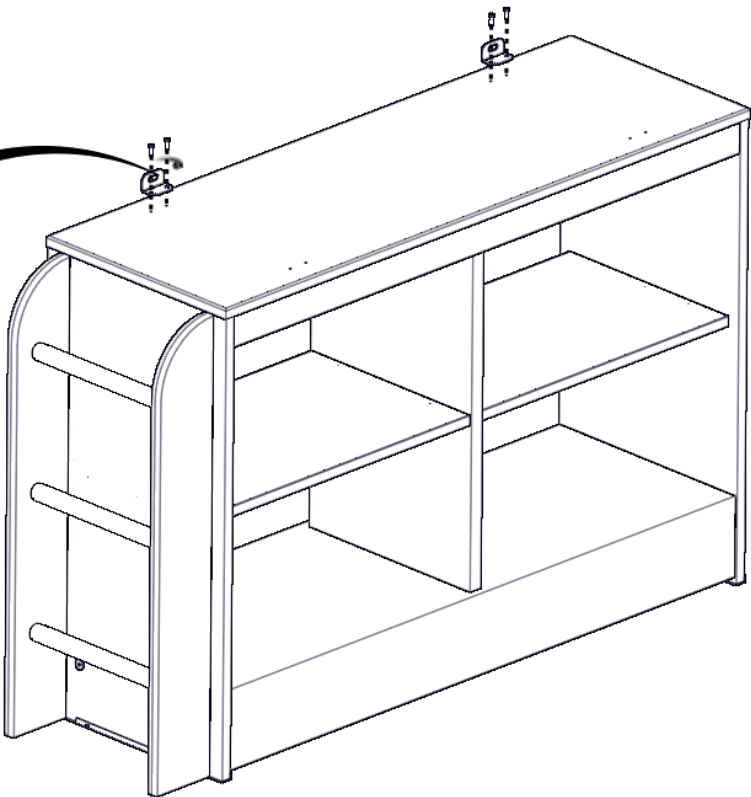
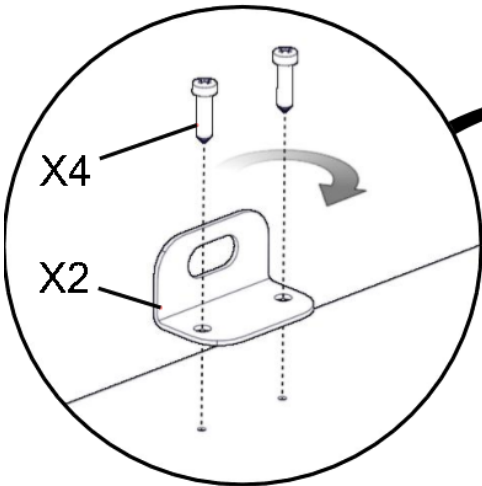


X2
Bracket

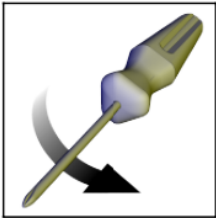
Loft Bed Components



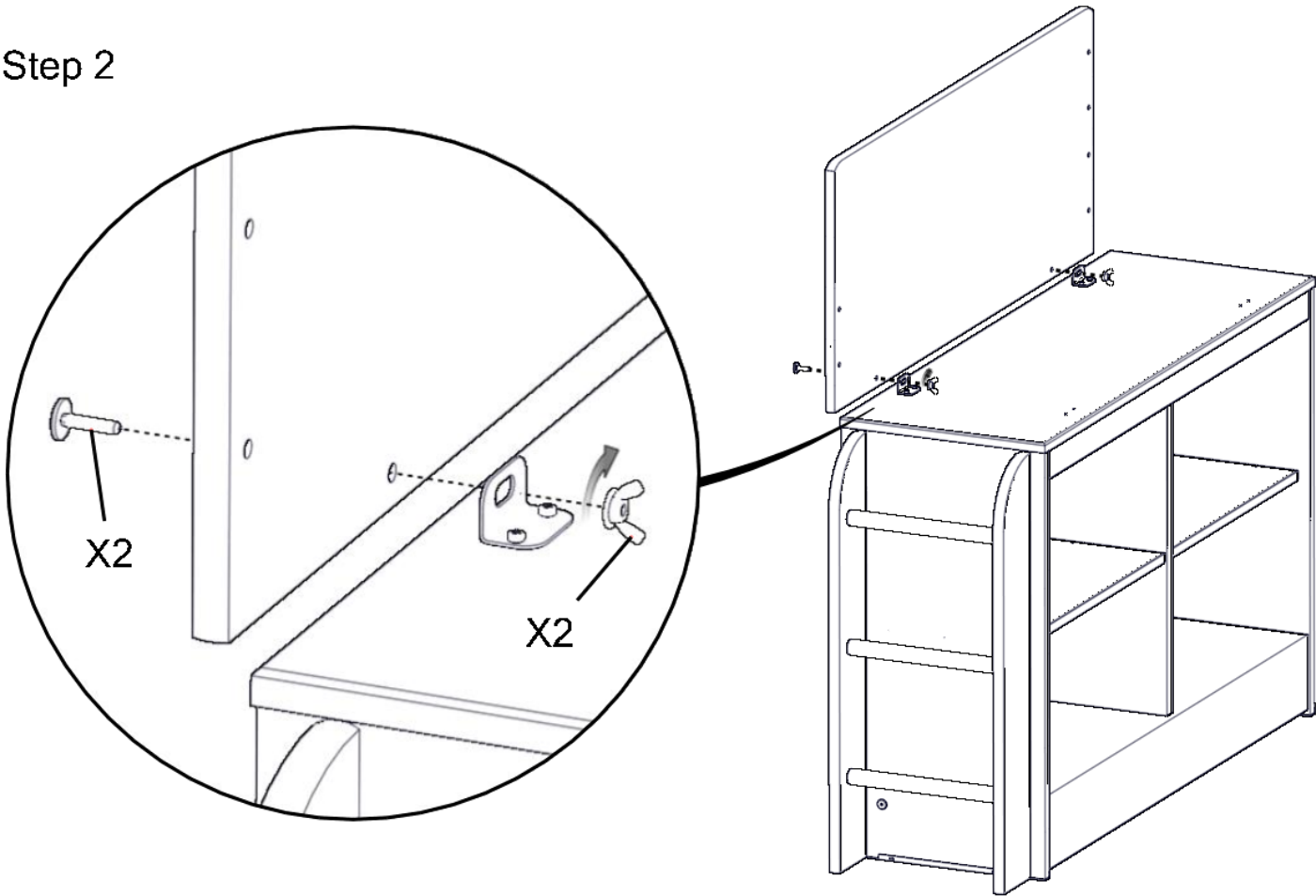
Step 1



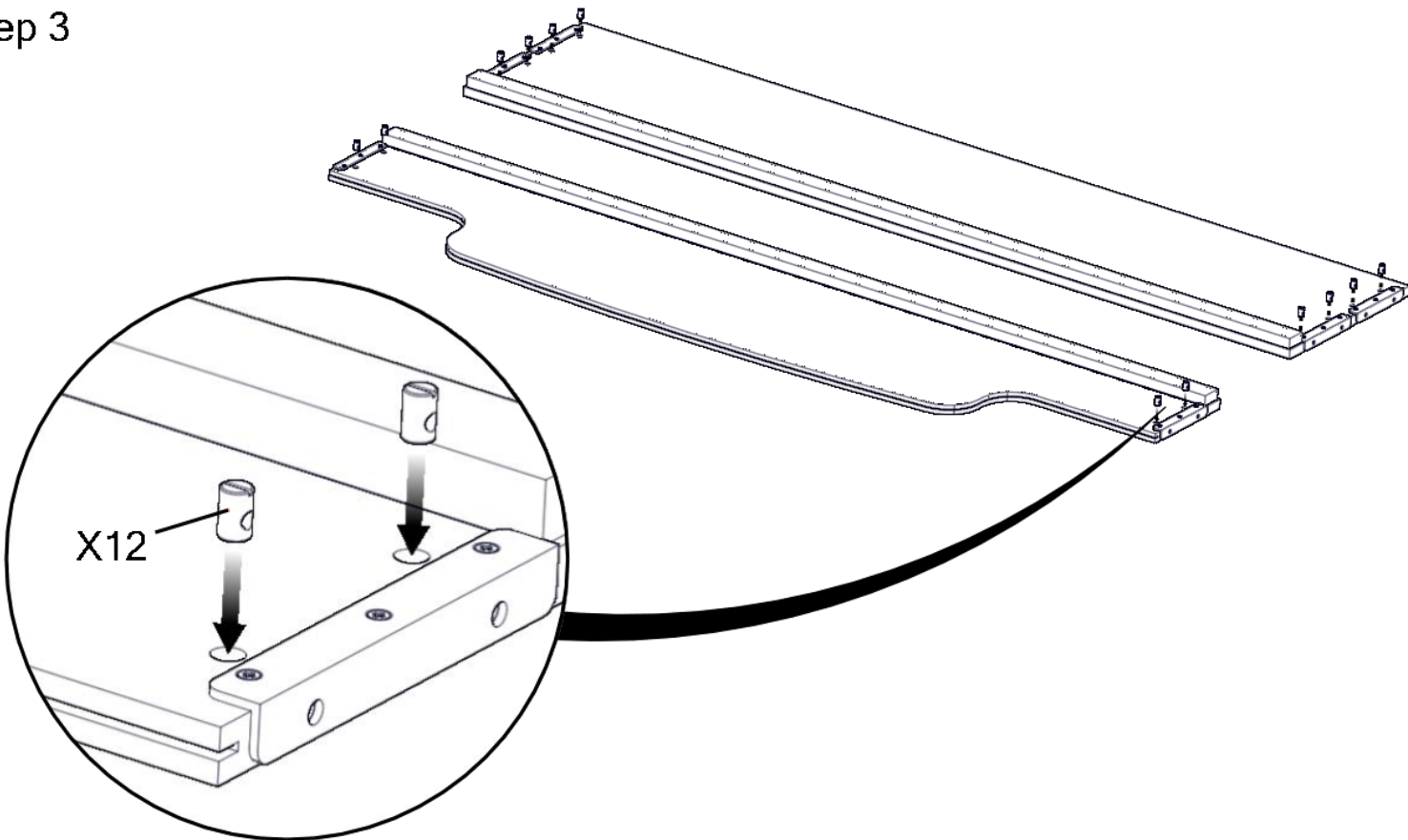
Tools



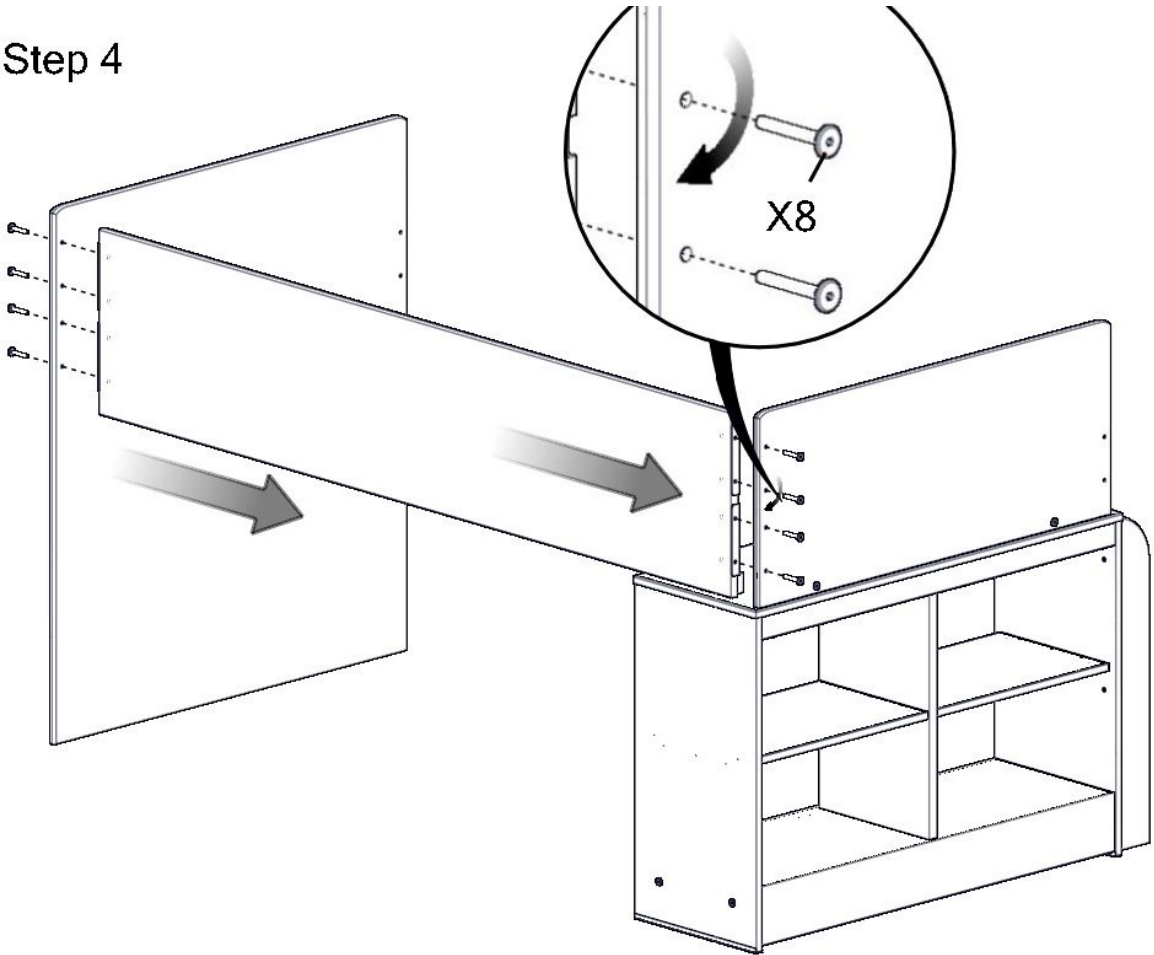
Step 2



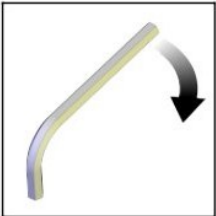
Step 3



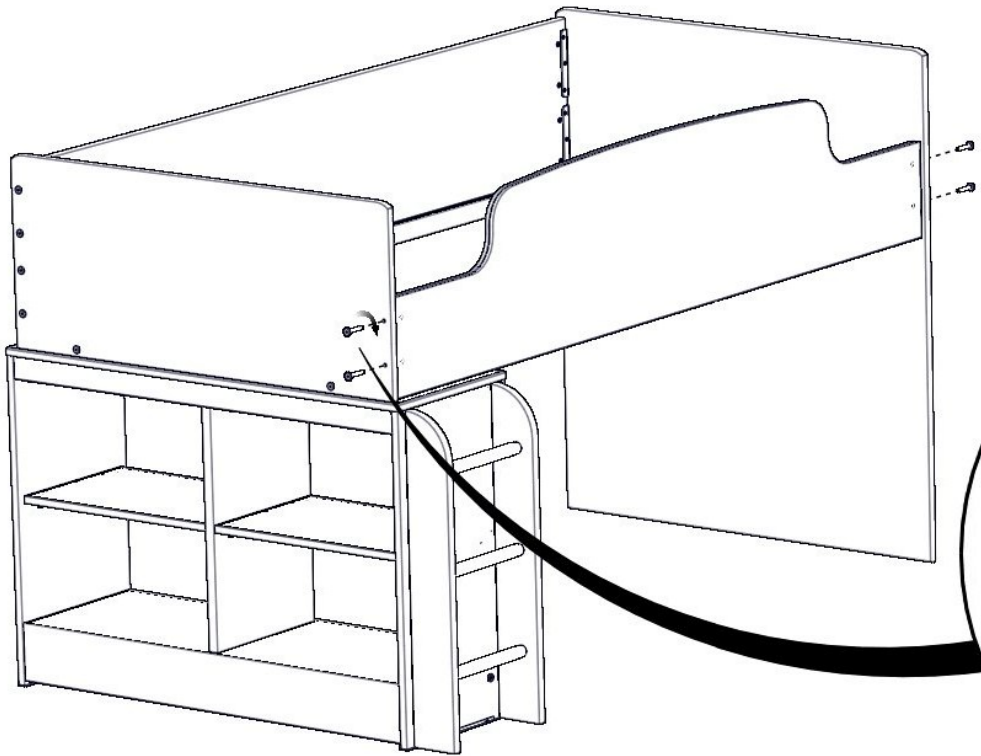
Step 4



Tools



Step 5



Tools

