

PARKWAY MODULAR QUARTER ROUND OTTOMAN

Model: 4560-6470
Collection: Parkway Modular
Designer: John Caldwell

BROWN JORDAN™



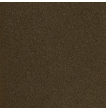
Parkway Modular provides a modular seating option to coordinate with the popular Parkway Sling and Parkway Cushion collections. The ten-piece collection can be positioned to form an L shape or a variety of geometric shapes that easily allows for entertaining large groups. The Quarter Round Ottoman Cushions can be altered to accept welting and create a versatile multi-use piece as an extra seat, a footrest, or chaise.

Specifications

Height (in)	17.5
Width (in)	35
Depth (in)	35
Seat Height (in)	17.5
Weight (lbs)	18.5

Material Options

Frame Finishes



Pompeii Gold

Fabrics



Almond - Grade A