

36" Built-In Bottom-Freezer



Benchmark® Series – Panel Ready B36IT100NP



B36IT100NP
Custom Panel

Also available in:

Stainless Steel
B36BT130NS

The Benchmark 36" built-in refrigerator is panel-ready, redesigned with premium metal interior, keeps food fresh longer and has efficient and precise cooling and humidity control.

Features & Benefits

VitaFresh® technology keeps food fresh up to 3x longer* with precise humidity and temperature control, on a full color UI.

Stainless steel backwall and bright LEDs keep the spotlight on your food.

Metal door bins, split shelves and three-tier freezer drawers to help you organize the way you want.

Full width deli drawer can accommodate large charcuterie or veggie platters for when you're ready to serve.

Internal water dispenser with UltraClarityPro® filter removes over 99.9% of impurities.

| Dimensions and Weight | |
|--|------------------------------|
| Overall width (inches) | 35 1/4" |
| Overall height (inches) | 83 9/16" Min. – 85 1/2" Max. |
| Overall depth without doors and handles (inches) | 24" |
| Required cutout size (HxWxD) (inches) | 84" x 36" x 25" |
| Net /gross weight (approx.) (lbs.) | 506 / 547 |

| Style | |
|------------------|---------------|
| Door panel style | Panel Ready |
| Handle style | Custom Handle |
| Interior finish | SS Backwall |
| Number of doors | 3 |

| Innovation | |
|--|-----|
| Wi-Fi-enabled for control with Home Connect® app | Yes |
| Remote monitoring and control | Yes |
| Remote system upgrade | Yes |

| Performance | |
|---------------------------|-------|
| VitaFresh® | Yes |
| Evaporators / Compressors | 2 / 2 |
| Quick Ice | Yes |
| Automatic defrosting | Yes |

| | |
|--|-----|
| Modes: Normal, Vacation, Eco, Sabbath, Shopping, Demo, SuperCool, SuperFreeze® | |
| Internal water dispenser | Yes |
| One Touch BottleFill | Yes |
| Water filter (6 months) | Yes |
| AirFresh® filter | Yes |
| Ethylene filter (6 months) | Yes |

| Capacity and Storage | |
|---------------------------------------|--------|
| Total capacity (cu. ft.) | 20.1 |
| Refrigerator capacity (cu. ft.) | 13.2 |
| Freezer capacity (cu. ft.) | 6.9 |
| Full-extension freezer storage drawer | Yes |
| Tiered freezer drawer | 3-Tier |
| Full extension deli drawer | 1 |
| Full extension VitaFresh® drawers | 2 |

VitaFresh® drawer modes (°F/humidity): Vegetables (32°F/high), Fruit (32°F/low) Meat (30°F/low), Fish (30°F/low), Deli (34°F/low), Cheese (35°F/low), Beverages (34°F/low), Mixed (32°F/low), Charcuterie (35°F/low)

| | |
|-----------|-----------------------|
| Door bins | 4 Adjustable, 2 Fixed |
|-----------|-----------------------|

| General Features | |
|--|---------------|
| Color touchscreen control panel | Yes |
| Water filter replacement indicator | Yes |
| Ice maker | Yes |
| Ice On / Off | Yes |
| Ice production (24 hrs.), ice cubes (lbs.) | 5.5 |
| Ice storage capacity (lbs.) | 6.6 |
| LED interior and drawer lighting | Yes |
| Independent cooling systems | 2 |
| Door alarm | Yes |
| Childproof lock | Yes |
| Cooling system | MultiAirFlow™ |
| Maximum sound level | 39 dBA |
| Star-K certified Sabbath mode | TBD |



*As compared to a Bosch refrigerator without VitaFresh®. Results may vary among different foods.

Accessories: To purchase Bosch accessories, cleaners & parts please visit www.bosch-home.com/us/store or call 1-800-944-2904 (Mon to Fri 5 am to 6 pm PST, Sat 6 am to 3 pm PST).

Notes: All height, width and depth dimensions are shown in inches. BSH reserves the absolute and unrestricted right to change product materials and specifications, at any time, without notice. Consult the product's installation instructions for final dimensional data and other details prior to making cutout.

Warranties: Please see Use & Care manual or Bosch website for statement of limited warranty.

For more information on our entire line of products, go to www.bosch-home.com/us or call 1-800-944-2904

© BSH Home Appliances Corporation. All rights reserved. Bosch is a registered trademark of Robert Bosch GmbH.

36" Built-In Bottom-Freezer



Benchmark® Series – Panel Ready B36IT100NP

Energy Efficiency

ENERGY STAR® Certified Yes

Energy consumption (kWh / yr) 599

Operating Temperature

Refrigerator: 33°F (1°C) to 43°F (6°C)

Freezer Drawer: -11°F (-24°C) to -6°F (-21°C) to 6°F (-14°C)

VitaFresh® Drawer: 10 preset modes

SuperCool: 34°F (1°C) for approx. 8 hours

SuperFreeze®: -15°F (-26°C) for approx. 8 hrs.

Installation Features

Four point front adjustable with 4 wheels Yes

Attachment method to cabinetry 4 fixation brackets, Fixed at 4 corners of appliance, no visible screws

Front serviceable Yes

Anti-tip bracket included Yes

Frame kit included Yes

Technical Specs

Required power supply 110-120 V, 60 Hz, 10 Amp Min.

Plug type 120V-3 Prong

Power cord length (in.) 118"

Warranty

Limited warranty, non-electronic parts (parts only, no labor) 2 Years

Electronic parts (parts only, no labor) 5 Years

Lifetime Limited: Stainless steel door if rust-through occurs (parts only, no labor) Lifetime

Optional Accessories



BORPLFTR55
Replacement
UltraClarityPro®
water filter



11037377
Water filter bypass
(part no.)



17006999
Replacement ethylene
starter kit (part no.)

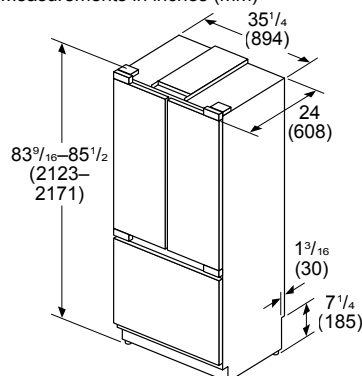


17007000
Replacement ethylene
filter packets (part no.)

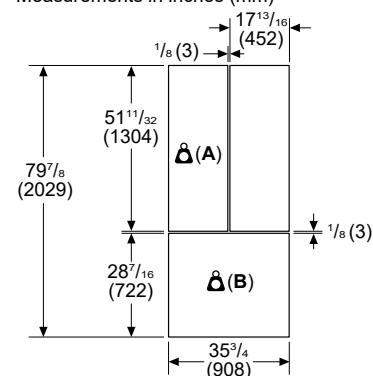
Installation Details

Product and Panel Dimensions

Measurements in inches (mm)



Measurements in inches (mm)

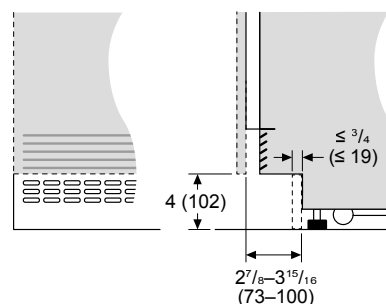


A: Max. weight 141 lb (64 kg) per panel

B: Max. weight 121 lb (55 kg) per panel

Base Detail Dimensions

Measurements in inches (mm)



Accessories: To purchase Bosch accessories, cleaners & parts please visit www.bosch-home.com/us/store or call 1-800-944-2904 (Mon to Fri 5 am to 6 pm PST, Sat 6 am to 3 pm PST).

Notes: All height, width and depth dimensions are shown in inches. BSH reserves the absolute and unrestricted right to change product materials and specifications, at any time, without notice. Consult the product's installation instructions for final dimensional data and other details prior to making cutout.

Warranties: Please see Use & Care manual or Bosch website for statement of limited warranty.

For more information on our entire line of products, go to www.bosch-home.com/us or call 1-800-944-2904

© BSH Home Appliances Corporation. All rights reserved. Bosch is a registered trademark of Robert Bosch GmbH.

36" Built-In Bottom-Freezer

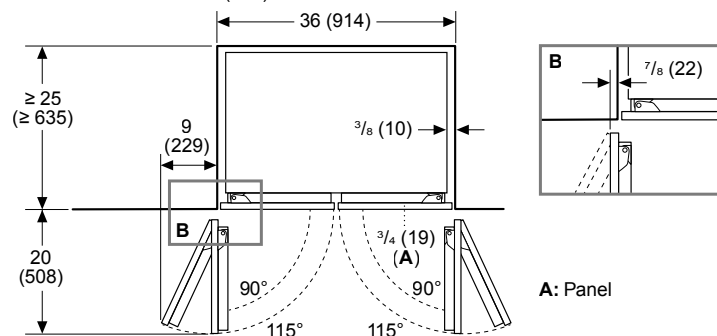


Benchmark® Series – Panel Ready B36IT100NP

Installation Details

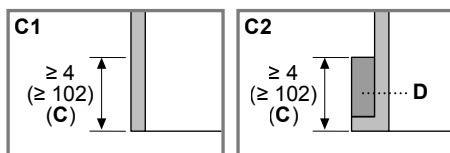
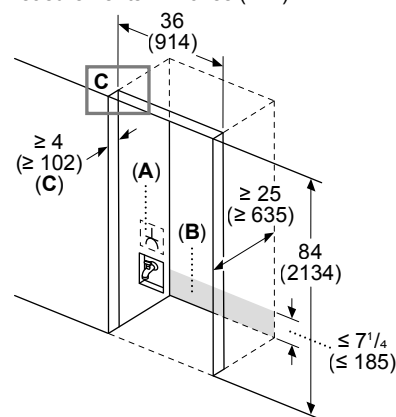
Flush Install Top View Clearance

Measurements in inches (mm)



Flush Install Cutout Dimensions

Measurements in inches (mm)



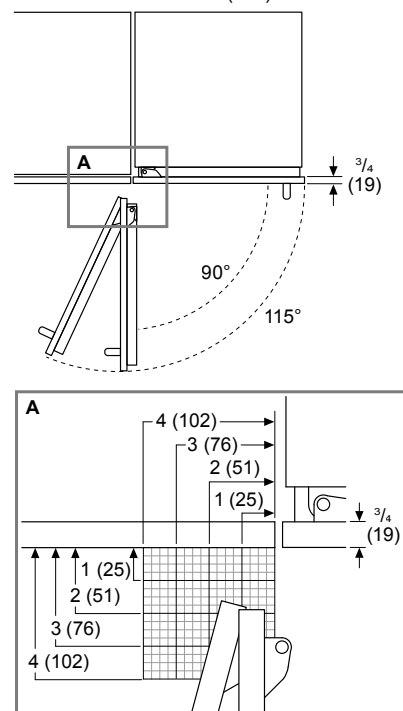
A: Outlet
B: Area for water and electric line routing

C: Furniture return
C1: Frameless cabinet
C2: Framed cabinet

D: Filler

Hinge Clearance

Measurements in inches (mm)



Accessories: To purchase Bosch accessories, cleaners & parts please visit www.bosch-home.com/us/store or call 1-800-944-2904 (Mon to Fri 5 am to 6 pm PST, Sat 6 am to 3 pm PST).

Notes: All height, width and depth dimensions are shown in inches. BSH reserves the absolute and unrestricted right to change product materials and specifications, at any time, without notice. Consult the product's installation instructions for final dimensional data and other details prior to making cutout.

Warranties: Please see Use & Care manual or Bosch website for statement of limited warranty.

For more information on our entire line of products, go to www.bosch-home.com/us or call 1-800-944-2904

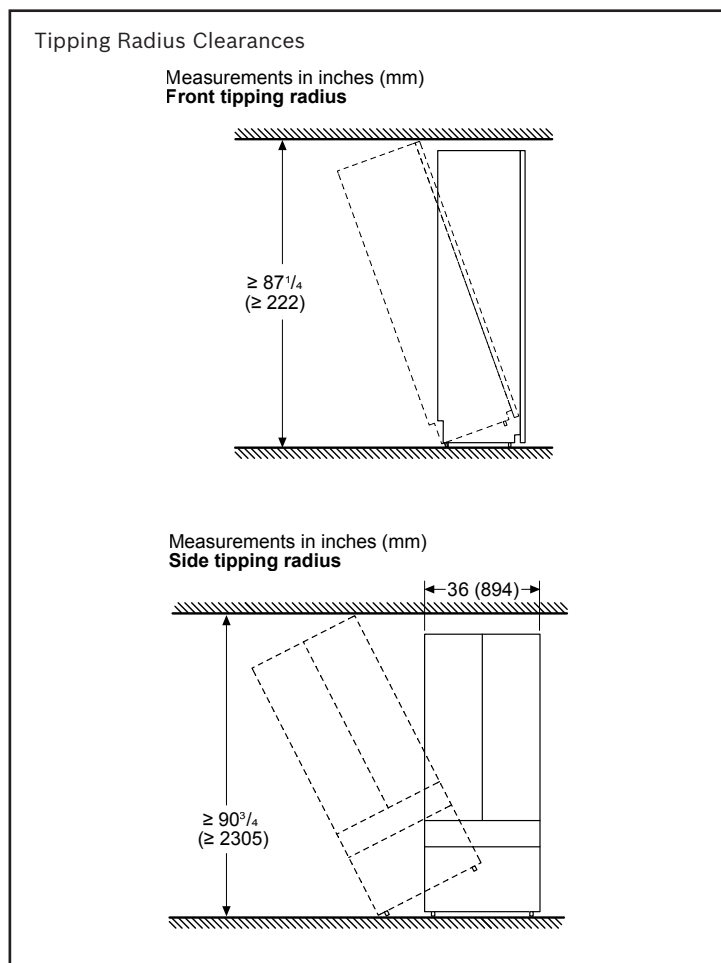
© BSH Home Appliances Corporation. All rights reserved. Bosch is a registered trademark of Robert Bosch GmbH.

36" Built-In Bottom-Freezer



Benchmark® Series – Panel Ready B36IT100NP

Installation Details



Accessories: To purchase Bosch accessories, cleaners & parts please visit www.bosch-home.com/us/store or call 1-800-944-2904 (Mon to Fri 5 am to 6 pm PST, Sat 6 am to 3 pm PST).

Notes: All height, width and depth dimensions are shown in inches. BSH reserves the absolute and unrestricted right to change product materials and specifications, at any time, without notice. Consult the product's installation instructions for final dimensional data and other details prior to making cutout.

Warranties: Please see Use & Care manual or Bosch website for statement of limited warranty.

For more information on our entire line of products, go to www.bosch-home.com/us or call 1-800-944-2904

© BSH Home Appliances Corporation. All rights reserved. Bosch is a registered trademark of Robert Bosch GmbH.