

PULASKI™



Pulaski Furniture Living Room Furniture Two Way Sliding Door Curio 21015

Pulaski Furniture Website

www.pulaskifurniture.com

SKU: 21015

Availability: In Stock

Type: Cabinets, Curio Cabinets

Category: Living Room

Collection: PFC Curios

Number of Shelves: 5

Style: Traditional/Formal

Finish: Dark Wood

Brand: Pulaski Furniture

Product Description: In the style of fashionable 19th century handmades, thi curio features rope-twist embossing, beveled glass, a weighty cornice, and stepped moldings on the base. The rich Edwardian finish emulates fine traditional wood finishing. This curio is tall andwide, but not too deep. It can fit most anywhere and hold most anything. The curio includes a mirrored back, halogen lighting, adjustable glass shelves, adjustable glides for leveling, and right-side entry.

Collection Features: With over 60 years of furnishing homes across America, Pulaski Furniture continues its heritage of outstanding value, quality and design. We invite you to explore our accents and display cabinet collection and find the perfect piece to make a statement or complete your vision for any area of your home.

Specifications: Middle glass shelf measures 38W x 10.7D x 0.25H
Other shelves measure: 38W x 11.5D x 0.25H

Status: Active

Finish: Rich oak brown finishing emulates traditional design

Features: Five shelves
Plate grooves on shelves 3/4-inch from the back

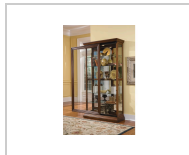
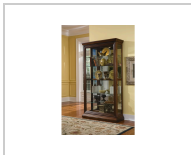
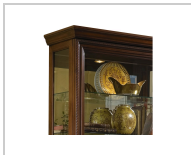
Material: Hardwoods, Glass, Mirror

Frame Construction: Pulaski uses carefully chosen solid wood and select wood veneers over durable wood products in our furniture construction. Use of veneers enables more decorative looks unattainable with solid wood. Veneers are used over durable wood products such as medium density fiberboard (MDF) and particle board, made of renewable resources. MDF and particle board are used in quality furniture for areas that need to be stable, such as large surfaces. These durable wood products do not expand and contract with heat and cold and do not absorb moisture as much as solid wood, which results in stronger and longer-lasting furniture.

Cleaning Information: L: Gently wipe with a water dampened white cotton cloth. Wipe dry with a clean dry cloth. Clean spills immediately with a soft, slightly damp cloth.

Width: 43" (109.2 cm)

Depth: 16" (40.6 cm)



Height: 80" (203.2 cm)

Weight: 202.4 lb (91.1 kg)

Volume: 41.44 cu ft (1.2 m³)

Carton Width: 18.58 (47.2 cm)

Carton Height: 83.82 (212.9 cm)

Carton Weight: 235.4 lb (105.9 kg)

Carton Length: 45.98" (116.8 cm)