
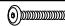


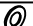
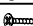




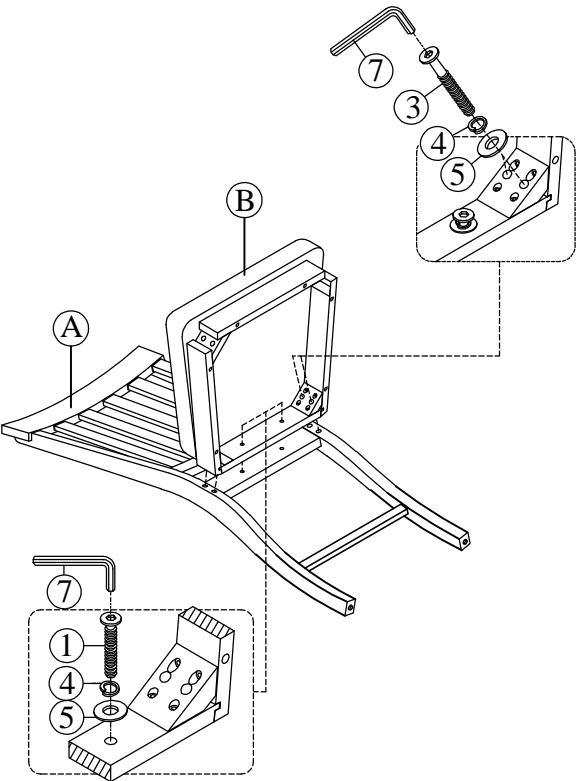
Assembly Instruction for  
COUNTER SIDE CHAIR  
DKY350CSC

- Caution: Please read instructions thoroughly before unpacking assembly parts. Sharp, exposed staple tips can cause injury, therefore, for your protection, please remove any exposed staples used in packing.
1. We recommend that you should assemble this product with the assistance of another person; this will make assembly easier, and will help to eliminate damage to the product or injury to persons during assembly.
  2. Be sure to check all packing materials carefully for small parts that may have come loose inside the carton during shipment.
  3. Please do not over tighten screws or bolts.
  4. Please put all parts on a non-abrasive floor before assembly, and follow the assembly steps to assemble your newly purchased product correctly and efficiently.

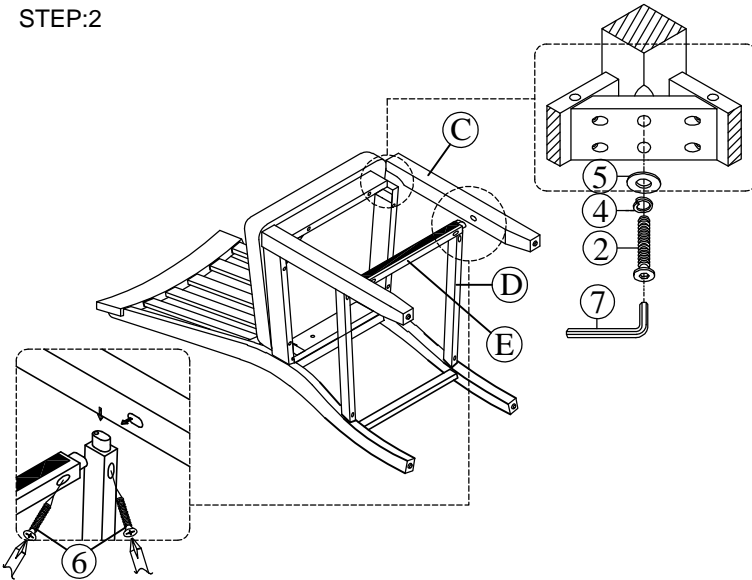
PART LIST FOR COUNTER SIDE CHAIR				HARDWARE LIST PACKED INSIDE BOX			
No.	PART DESC	CODE.	Q'TY	No.	HARDWARE DESC	CODE.	Q'TY
A	COUNTER SIDE CHAIR - BACK FRAME	PDKY350CSCBFR	1	1	 ALLEN BOLT (Ø1/4"*1-5/8")	PDKY350CSCHW	2
B	COUNTER SIDE CHAIR - SEAT FRAME WITH WOOD BOARD	PDKY350CSCSEA	1	2	 ALLEN BOLT (Ø1/4"*2-3/8")		4
C	COUNTER SIDE CHAIR - LEFT/RIGHT FRONT LEGS SET	PDKY350CSCLEG	2	3	 ALLEN BOLT (Ø1/4"*3")		4
D	COUNTER SIDE CHAIR - LEFT/RIGHT SIDE STRETCHER SET	PDKY350CSCSTR2	2	4	 SPRING WASHER (Ø1/4")		10
E	COUNTER SIDE CHAIR - FRONT STRETCHER	PDKY350CSCSTR1	1	5	 FLAT WASHER (Ø1/4")		10
				6	 SCREWS (#4*1-1/2")		6
				7	 ALLEN KEY (Ø1/8")		1

 Only tighten all bolts when all bolts aligned with bolt inserts.

STEP:1



STEP:2



COMPLETED

