

# Friedrich WallMaster® Series Thru-the-wall Air Conditioners

SMART. QUIET. COOL.



THE EXPERTS IN ROOM AIR CONDITIONING



# SMART HOME READY

SET/ADJUST  
SCHEDULES

ADJUST  
TEMPS

CONTROL  
BY VOICE

## WallMaster® | Smart Thru-the-wall Air Conditioners

HOME OR AWAY, YOU'RE IN CONTROL WITH THE FRIEDRICHGO™ APP.

Integrated Wi-Fi control from your smartphone. Also compatible with Amazon Alexa or Google Home.

### Connect in minutes

It's easy with our simplified set up process

### Easily set your home, away, and night time preferences

Set a seven-day custom schedule that fits your lifestyle

### You're in control anytime, anywhere

Power units off and on, increase or decrease a unit's set point temperature, change system cool, fan, heat, and auto settings and fan speeds

### Controlling multiple units is simple

With our advanced grouping program, you can control multiple units to work independently or as a single system. You can even invite other users to manage one or more of your units



## UP TO 45% QUIETER\* THAN COMPETITOR'S ROOM AIR CONDITIONERS

### QuietMaster® technology

Building the quietest air conditioners begins with the design process and continues through the selection of superior components and materials.

It is shaped by skilled manufacturing and refined through on-going product testing in our engineering lab.

The result is a noticeably quieter cooling and heating experience, as much as 45% quieter than competitor's products.



## COMMERCIAL GRADE QUALITY AND COMPONENTS

### Unrivaled quality

WallMaster® is built to perform in the extreme conditions of commercial applications, but it's also perfect for today's home with the convenience and simple control today's consumers demand.

- 1 Dense, sound-blocking insulation
- 2 Quiet rotary compressor mounted on large rubber grommets
- 3 Steel inner walls
- 4 Totally-enclosed commercial grade fan motor
- 5 Insulated air plenum prevents outside air and noise intrusion
- 6 Two resilient rings on motor mount prevent metal-to-metal contact, which eliminates extra vibration and noise
- 7 Solid steel blower wheel housing for maximum sound reduction



Durable metal wall sleeve with premium aluminum exterior grille (Optional accessory, must be purchased separately).

\*Based on testing conducted at Friedrich's Design and Development Center in comparison to leading rotary compressor models.

## FEATURES

### Comfort & Convenience

- Smart Fan auto-adjusts fan speed to maintain desired temperature
- Check filter reminder
- Control panel lockout (ON/OFF)
- 3-speed fan
- Auto restart
- Electronic defrost control
- Individually adjustable louvers direct airflow to where it's needed most
- Washable, antimicrobial filter
- **Money Saver®** setting cycles the fan with the compressor
- Auto-changeover between cooling and heating (heat/cool models)

### Durability & Quality

- Quiet rotary compressor
- Premium aluminum exterior grille
- Impact resistant front cover

### QuietMaster® technology

- Up to 45% quieter than competitive models
- Steel inner wall and extra dense insulation blocks outdoor noise
- Vibration isolating design and components reduce operating noise
- Precision engineering delivers maximum air flow and air dispersion at low sound levels



### Control via FriedrichConnect®

- Built-in Wi-Fi
- Voice command compatible, Amazon Alexa/Google Home
- Create customizable, 7-day schedules
- Advanced grouping of multiple units

### Installation Features

- Mounts flush with the exterior wall
- Ideal for thicker wall installations, where side fins don't fit
- Firm grip handles on the chassis for easy installation and removal from wall sleeve

### Safety & Security

- **EntryGuard®** anti-intrusion protection secures chassis to sleeve
- UL listed for safe operation
- Insect barrier

### Earth Friendly

- ENERGY STAR® qualified models,
- Multiple scheduling options save energy
- Temperature limiting for maximum low and high temperature settings
- R-32 refrigerant with low Global Warming Potential on select models
- Recyclable packaging



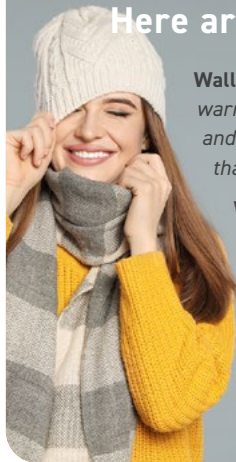
## COOLING SIZING GUIDE

AREA TO BE CONDITIONED IN SQ. FT.	APPROXIMATE COOLING BTU REQUIRED
100 - 150	5000
150 - 250	6000
250 - 300	7000
300 - 350	8000
350 - 400	9000
400 - 450	10000
450 - 550	12000
550 - 700	14000
700 - 1000	18000
1000 - 1200	21000
1200 - 1400	23000
1400 - 1500	24000
1500 - 2000	30000
2000 - 2500	34000

Guide based on normal room insulation, average number of sun exposed windows and two person occupancy.

1. If heavily shaded, reduce cooling Btus required by 10%
2. If very sunny, increase cooling Btus required by 10%
3. Add 500 Btus per person over 2 people
4. Add 4,000 Btus if the area is a kitchen

## Need a Friedrich model that heats and cools? Here are some things to consider.



**WallMaster® Electric Heat** models utilize an electric heat strip that provides warm air quickly. They can be used for **primary heating in moderate climates** and as **supplemental heating in colder climates**. They are ideal for rooms that are always 'too cold in winter'.

**WallMaster® Heat Pump** provides energy-efficient heating by extracting heat from the outside air. They can be used for **primary heating in moderate climates** and as **supplemental heating in colder climates**. 230 volt models have back-up electric heat that will activate when outside temperatures are too cold for efficient heat pump operation.

Your **Friedrich Dealer** can assist you in selecting the right **WallMaster®** for your local climate and application.



Friedrich Air Conditioning Co. | 10001 Reunion Place, Suite 500 | San Antonio, TX 78216 | 877.599.5665 | [www.friedrich.com](http://www.friedrich.com)



## Friedrich WallMaster® Series Thru-the-wall Air Conditioners



---

### COOL ONLY

115 volt- 8,000 to 11,600 Btu  
230 volt- 10,000 to 15,400 Btu

EFFICIENCY: EERs up to 10.72 CEER up to 10.6

---

### HEAT PUMP

230 volt- 11,100 Btu COOLING  
8,900 Btu HEATING

EFFICIENCY: EERs up to 9.4 CEER 9.3

---

### ELECTRIC HEAT MODELS

230 volt- 10,000 to 16,000 Btu COOLING  
11,000 Btu HEATING

EFFICIENCY: EERs up to 10.7

## FEATURES

- ✔ Control with *FriedrichConnect*® app or by voice command
- ✔ Customizable, 7-day schedules
- ✔ Advanced grouping of multiple units
- ✔ Smart Fan auto-adjusts fan speed to maintain desired temperature
- Check filter reminder
- Control panel lockout (ON/OFF)
- ✔ 24-hour timer
- 3-speed fan
- Auto restart
- Electronic defrost control
- Individually adjustable louvers direct airflow to where it's needed most
- Washable, antimicrobial filter
- ✔ *Money Saver*® setting cycles the fan with the compressor
- Auto-changeover between cooling and heating (heat/cool models)
- Rotary compressor provides quiet, dependable performance
- Premium aluminum exterior grille
- Rifled copper tubing/high tech louvered fins for better efficiency
- Impact resistant front cover
- Up to 45% quieter\* than competitive models
- Steel inner wall and extra dense insulation blocks outdoor noise
- Vibration isolating design and components reduce operating noise
- Precision engineering delivers maximum air flow and air dispersion at low sound levels
- Mounts flush with the exterior wall
- Ideal for thicker wall installations, where side fins don't fit
- Firm grip handles on the chassis for easy installation and removal from wall sleeve
- *EntryGard*® anti-intrusion protection secures chassis to sleeve
- Insect barrier
- ✔ ENERGY STAR® qualified models,
- ✔ Multiple scheduling options save energy
- ✔ Temperature limiting for maximum low and high temperature settings
- ✔ R-32 refrigerant with low global warming potential (GWP) on WCT16B30A
- ✔ Recyclable packaging



\*Based on testing conducted at the Friedrich Design and Development Center in comparison to leading rotary compressor models



SPECIFICATIONS

Model	UPC	Cooling Btu	Heating Btu	Volts Rated	Cooling Amps	Cooling Watts	Heating Watts	Heating Amps	EER	CEER	Estimated Yearly Energy Cost	COP	Moisture Removal Pints per Hr.	CFM	Wt Lbs Net/Ship
Cooling Only															
★ WCT08A10A	724587436655	8000	—	115	7.0	748	—	—	10.7	10.6	\$73	—	1.8	250	93/97
★ WCT10A10A	724587436662	10000	—	115	9.3	935	—	—	10.7	10.6	\$92	—	2.4	250	103/107
★ WCT12A10A	724587440317	11600	—	115	10.5	1094	—	—	10.6	10.5	\$122	—	3.8	295	101/105
★ WCT10A30A	724587436952	10000	—	230	4.4	935	—	—	10.7	10.6	\$92	—	2.7	275	112/116
★ WCT12A30A	724587440324	12000	—	230	5.5	1132	—	—	10.6	10.5	\$123	—	3.8	300	109/113
WCT16B30A	724587442175	15400	—	230	7.5	1638	—	—	9.4	9.3	\$161	—	4.8	290	119/123
Cooling with Heat Pump															
WHT12A33A	724587438062	11100	8900	230	5.5	1181	1087	5.0	9.4	9.3	\$102	2.4	3.1	275	111/115
Cooling with Electric Heat															
WET10A33A	724587436990	10000	11000	230	4.4	935	3550	16.0	10.7	10.6	\$92	—	2.7	260	104/108
WET12A33A	724587437003	12000	11000	230	5.4	1250	3550	16.0	9.6	9.5	\$123	—	3.8	290	107/111
WET16A33A	724587437010	15400	11000	230	7.5	1638	3550	16.0	9.4	9.3	\$161	—	4.8	290	119/123

Heat Pump heating information (shown in red) indicates heat pump heating performance. Electric Heat heating information (shown in red) indicates electric heat strip performance. For Heat Pump electric heating performance refer to corresponding Electric Heat model.

HEATING PERFORMANCE: Change-over from heat pump operation to resistance operation on models indicated is automatic at a preset outside ambient temperature of approximately 35°F.

Calculate the heat loss of the space to be heated. As long as the heat loss does not exceed the resistance heating capacity rating of the unit, the heating performance will be satisfactory.

Note: all models will produce condensate. If condensate disposal is desired, an optional drain kit is available.

DEFROST CONTROL: Initiated at 30°F (outdoor coil temperature) and terminated at 43°F (outdoor coil temperature). During defrost, the compressor stops and the electric heat starts, then operates with the fan to maintain indoor comfort. Below 43°F, the unit remains in electric heat mode.

DEFROST DRAIN: Drain automatically opens at approximately 50°F to prevent condensate from freezing inside drain pan.



## INSTALLATION

### A PERFECT FIT IN FEDDERS A & B\* 27" SLEEVES

Replace old, inefficient 27" sleeve units with WallMaster



Dimensions	Friedrich WSE Sleeve	Fedders A Sleeve	Fedders B Sleeve*
Height (inches)	16 3/4"	16 3/4"	16 3/4"
Width (inches)	27"	27"	27"
Depth (inches)	16 3/4"	16 3/4"	19 3/4"

\*Installation in Fedders B sleeve requires a baffle adapter kit-BAK.

### CHASSIS DIMENSIONS

Height	Width	Depth	Height of Front	Width of Front	Depth with Front	Minimum Extension Into Room with Front
15 3/4"	26 1/2"	21"	17 1/4"	27 1/2"	23 1/4"	7 1/2"

### WSE SLEEVE DIMENSIONS

Height	Width	Depth	Depth with Front	Minimum Extension Outside	Thru-the-wall Finished Hole		
16 3/4"	27"	16 3/4"	24 1/4"	9/16"	Height	Width	Max. Depth
					17 1/4"	27 1/4"	15 5/16"

NOTE: Chassis requires WSE sleeve (sold and shipped separately)

### PLUG FACE/ CIRCUIT RATING

Model	Circuit Rating Breaker or T-D Fuse	Plug Face (NEMA#)	Power Cord Length (ft.)	Wall Outlet Appearance
WCT08A10A, WCT10A10A and WCT12A10B	125V - 15A	5 - 15P	6	
WCT10A30A., WCT12A30B and WCT16A30A.	250V - 15A	6 - 15P	6	
WHT12A33A, WET10A33A and WET12A33A. WET16A33A.	250V - 20A	6 - 20P	6	

Model	Carton Dimensions		
	Height	Width	Depth
WallMaster®			
WSE Sleeve	18"	27 1/4"	18"
Chassis	19 3/8"	30 5/8"	27 1/2"

Power cords are located on front left of WallMaster models.

Due to continuing research in new energy-saving technology, specifications are subject to change without notice.

As an ENERGY STAR® partner, Friedrich Air Conditioning Co. has determined that the selected ENERGY STAR® models meet the ENERGY STAR® guidelines for energy efficiency.

EER is the unit's Energy Efficiency Ratio; CEER is the unit's Combined Energy Efficiency Ratio.

Your energy costs will depend on your utility rates and use. The estimated energy cost is based on a electricity cost of \$.12 per kWh.

For more information, visit [www.ftc.gov/energy](http://www.ftc.gov/energy).

## OPTIONAL ACCESSORIES

### WSE SLEEVE/EXTERIOR GRILLES



#### Standard Grille

Premium, expanded metal grille with powder coat paint. Ships with WSE sleeve.



#### Architectural Grille- AG

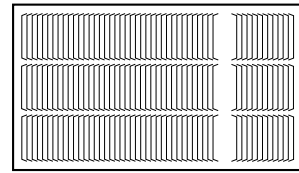
Premium extruded aluminum grille. Optional accessory

#### IMPORTANT:

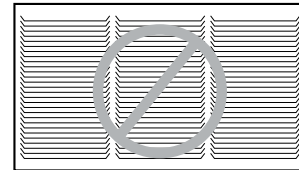
Operating the air conditioner with incorrect rear grille or without Baffle Adapter Kit (on 19 $\frac{1}{2}$ " deep sleeve) will recirculate discharge air and cause compressor overload to trip.

This will cause the unit to shut down temporarily and may lead to premature compressor failure.

#### CORRECT Vertical Louvers



#### INCORRECT Horizontal Louvers



#### WSE Wall Sleeve

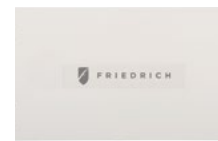
Ships with standard grille (shown above) and standard galvanized steel inner panel and painted steel outer panel.



WSE sleeve



Steel inner panel



Outer weather panel

## INSTALLATION ACCESSORIES

#### DK / Drain Kit

Installed at the back of the unit and allows for attachment to condensate disposal system, if necessary or desired.



#### IDK / Internal Drain Kit

New construction applications where a condensate drain system has been built into the wall interior.



#### BAK / Baffle Adapter Kit

Necessary when installing in a sleeve deeper than 16 $\frac{1}{2}$ " deep, such as Fedders B sleeve (19 $\frac{1}{2}$ " deep).



Friedrich Air Conditioning Co. | [www.friedrich.com](http://www.friedrich.com)