

# FlexView™ Series

## DISPLAY CARTS

A collection of display carts that are easy-to-integrate, cost-effective solutions for corporate, hospitality & education environments

### Features

- Engineered for long-lasting, durable use with a steel subframe; certified for strength and safety
  - Rugged casters provide long-lasting use and seamless maneuverability, even when wheeling over door thresholds
- Now more versatile! Casters and Leveling Feet are included for even more system flexibility.
- Designed with flexibility for mounting displays and other system components
  - Models with electric lift display height adjustment for optimal ergonomics, or manual display height positioning
  - Engineered with the Lever Lock™ system for small device mounting. Standard (non-electric lift) models include two rackspaces for additional equipment mounting
- Designed to be both user- and installer-friendly
  - Simple and quick maintenance with easy-access key locked doors
  - Base designed for unimpeded, up close display interaction
- Models with manual height adjustment now accept the optional front shelf ( FVS-HS-FRTSHLF-WH)
- UL Listed in US and Canada



### Specifications

FlexView™ Series Display carts shall be Middle Atlantic Products model #FVS-\_\_ (see chart for available models). Overall dimensions of FVS shall be \_\_"H x 43.5" W x 30.7"D (see drawing). FVS display height adjustability shall be from \_\_ to \_\_ (refer to chart). FVS height adjustability method shall be \_\_ (Manual, Electric, refer to chart). FVS shall have \_\_ (4" diameter directional locking casters, leveling feet, refer to chart) FVS series shall have a \_\_ (white, black, refer to chart) powdercoat finishes. FVS Series shall have a steel subframe. FVS Series shall provide 2 rackspaces (manual height adjustment model only) with a maximum of 46.1" usable space. FVS shall include an accessory basket and Lever Lock system. FVS shall

have knockouts for six AVIP panels and one RACO 440 Knockout. FVS shall accommodate one display and have horizontal VESA mounting patterns of 300, 400, 500, 600 and 800, and a vertical VESA pattern of 400. FVS shall have an overall weight capacity of 190 lb., with no more than 175 lb. for the monitor and 50 lb. mounted inside. FVS shall be UL Listed in the US and Canada. FVS shall be GREENGUARD Gold Certified. FVS shall be manufactured by an ISO 9001 and ISO 14001 registered company. FVS shall be warrantied to be free from defects in material or workmanship under normal use and conditions for the 7 years.

### Options:

- Soundbar bracket shall be model # FVS-SBBU
- Camera Mount shall be FVS-CMTB-128-BK (black finish) and FVS-CMTB-128-WH (white finish)
- Front shelf for manual height model (FVS-800SC-XX) shall be FVS-HS-FRTSHLF-WH

EIA/TIA COMPLIANT

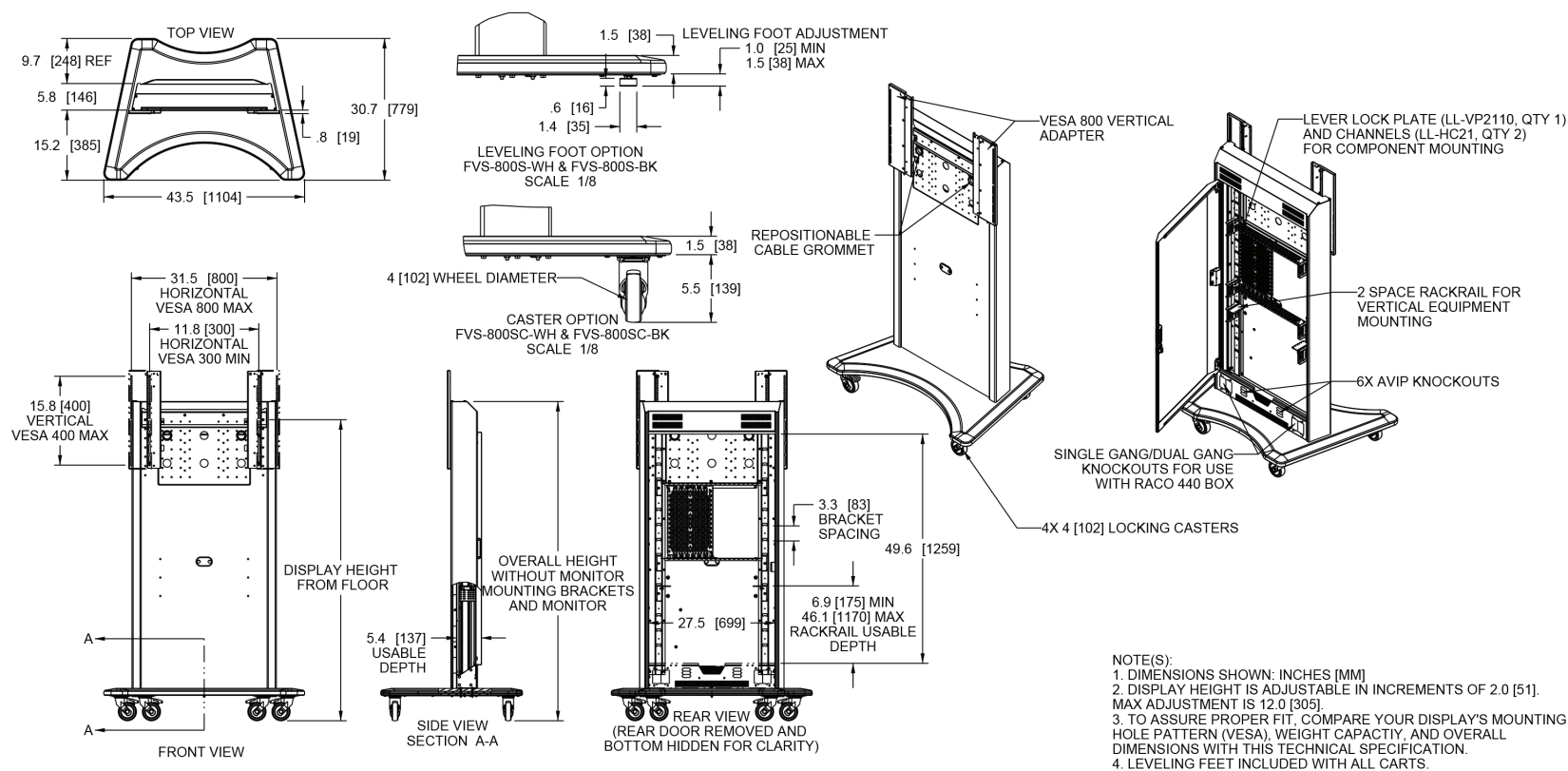


PRODUCT CERTIFIED FOR  
LOW CHEMICAL EMISSIONS  
UL.COM/GG  
UL 2818

# FlexView Series

## BASIC DIMENSIONS, MANUAL ADJUSTMENT

All dimensions in inches unless otherwise noted. [All dimensions in brackets are in millimeters]

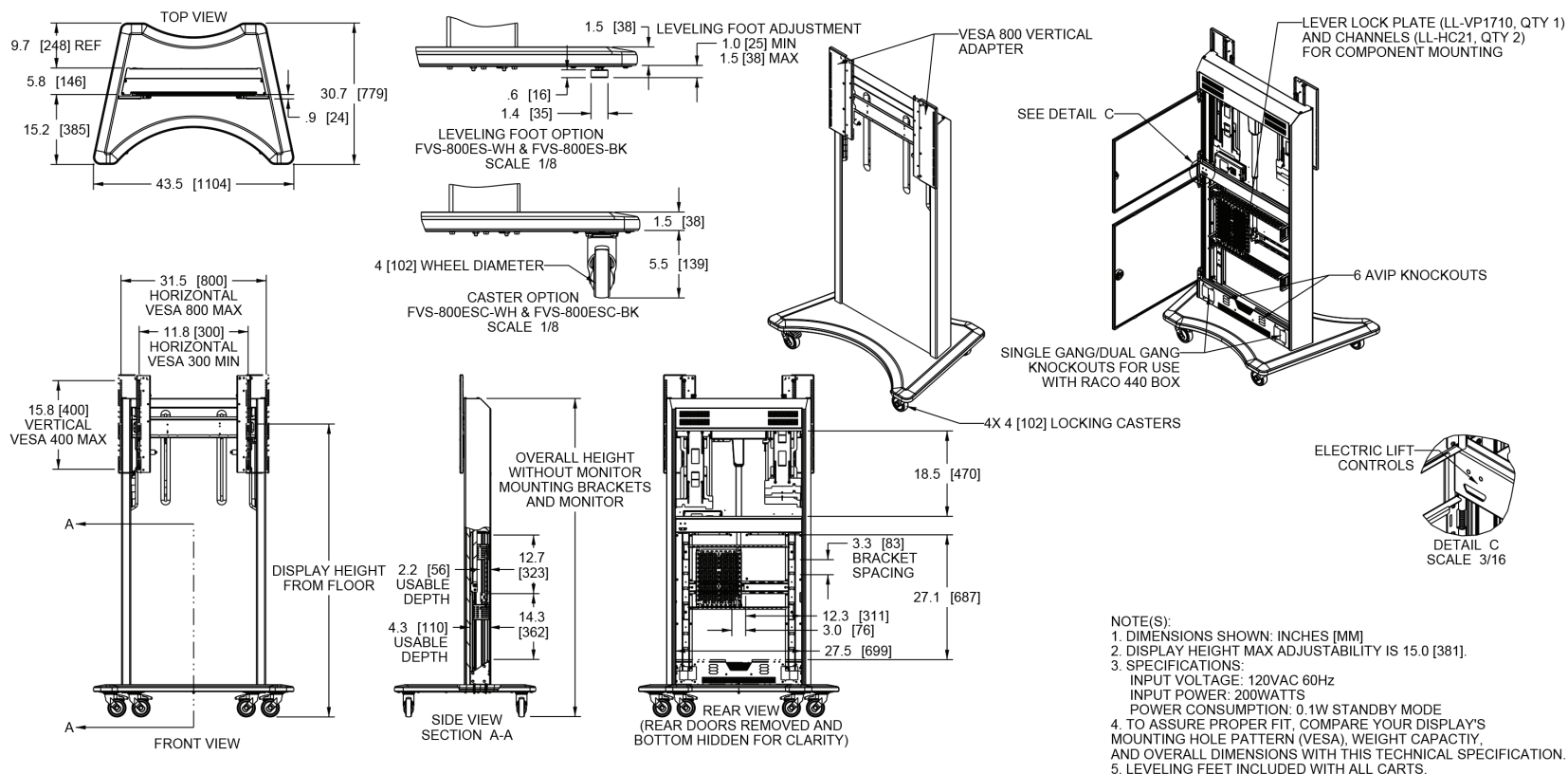


PART NUMBER	DISPLAY HEIGHT ADJUSTABILITY METHOD	COLOR	DISPLAY HEIGHT FROM FLOOR (SEE NOTE 2)		OVERALL HEIGHT WITHOUT MONITOR MOUNTING BRACKETS AND MONITOR	RECOMMENDED SCREEN SIZE	WEIGHT CAPACITY	HORIZONTAL VESA PATTERN	MAX VERTICAL VESA PATTERN
			MINIMUM	MAXIMUM					
FVS-800S-WH	MANUAL	WHITE	53.0 [1346]	65.0 [1651]	68.9 [1751]	40 [1016] - 90 [2286]	50 LB [23 KG] INSIDE MAX 175 LB [79 KG] MONITOR ONLY MAX	300, 400, 500, 600, AND 800	400
FVS-800S-BK	MANUAL	BLACK	53.0 [1346]	65.0 [1651]	68.9 [1751]	40 [1016] - 90 [2286]	190 LB [86 KG] MONITOR AND ACCESSORIES MAX	300, 400, 500, 600, AND 800	400

# FlexView Series

## BASIC DIMENSIONS, ELETRIC ADJUSTMENT

All dimensions in inches unless otherwise noted. [All dimensions in brackets are in millimeters]



PART NUMBER	DISPLAY HEIGHT ADJUSTABILITY METHOD	COLOR	DISPLAY HEIGHT FROM FLOOR (SEE NOTE 2)		OVERALL HEIGHT WITHOUT MONITOR MOUNTING BRACKETS AND MONITOR	RECOMMENDED SCREEN SIZE	WEIGHT CAPACITY	HORIZONTAL VESA PATTERN	MAX VERTICAL VESA PATTERN
			MINIMUM	MAXIMUM					
FVS-800ESC-WH	ELECTRIC	WHITE	50.0 [1270]	65.0 [1651]	68.9 [1751]	40 [1016] - 90 [2286]	50 LB [23 KG] INSIDE MAX 175 LB [79 KG] MONITOR ONLY MAX	300, 400, 500, 600, AND 800	400
FVS-800ESC-BK	ELECTRIC	BLACK	50.0 [1270]	65.0 [1651]	68.9 [1751]	40 [1016] - 90 [2286]	190 LB [86 KG] MONITOR AND ACCESSORIES MAX	300, 400, 500, 600, AND 800	400

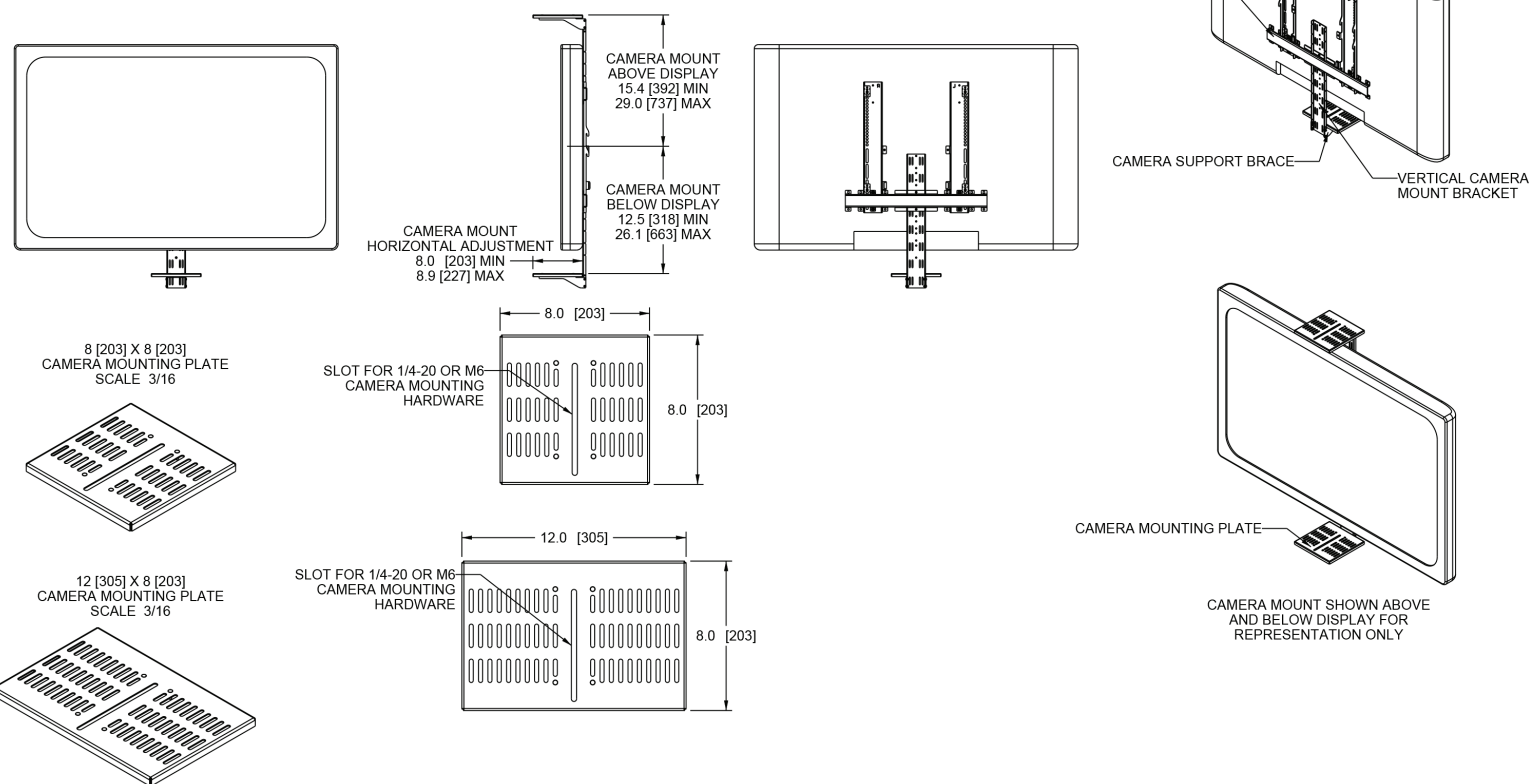
# FlexView Series

## CAMERA MOUNT BASIC DIMENSIONS

All dimensions in inches unless otherwise noted. [All dimensions in brackets are in millimeters]

**NOTE(S):**

1. DIMENSIONS SHOWN: IN [MM]
2. CAMERA MOUNT ADJUSTS VERTICALLY IN INCREMENTS OF 1.9 [49]
3. CAMERA MOUNT INCLUDES BOTH 8X8 AND 8X12 CAMERA MOUNTING PLATES.
4. WEIGHT CAPACITY: 20 LB [9 KG]
5. CAMERA MOUNT AND SOUNDBAR MOUNT CAN NOT BE MOUNTED TOGETHER IN THE SAME POSITION BUT THEY CAN BE MOUNTED IN OPPOSITE POSITIONS. FOR EXAMPLE, SOUNDBAR MOUNT MOUNTED ABOVE MONITOR AND CAMERA MOUNT MOUNTED BELOW MONITOR.
6. PART NUMBERS: FVS-CMTB-128-BK (BLACK) AND FVS-CMTB-128-WH (WHITE)



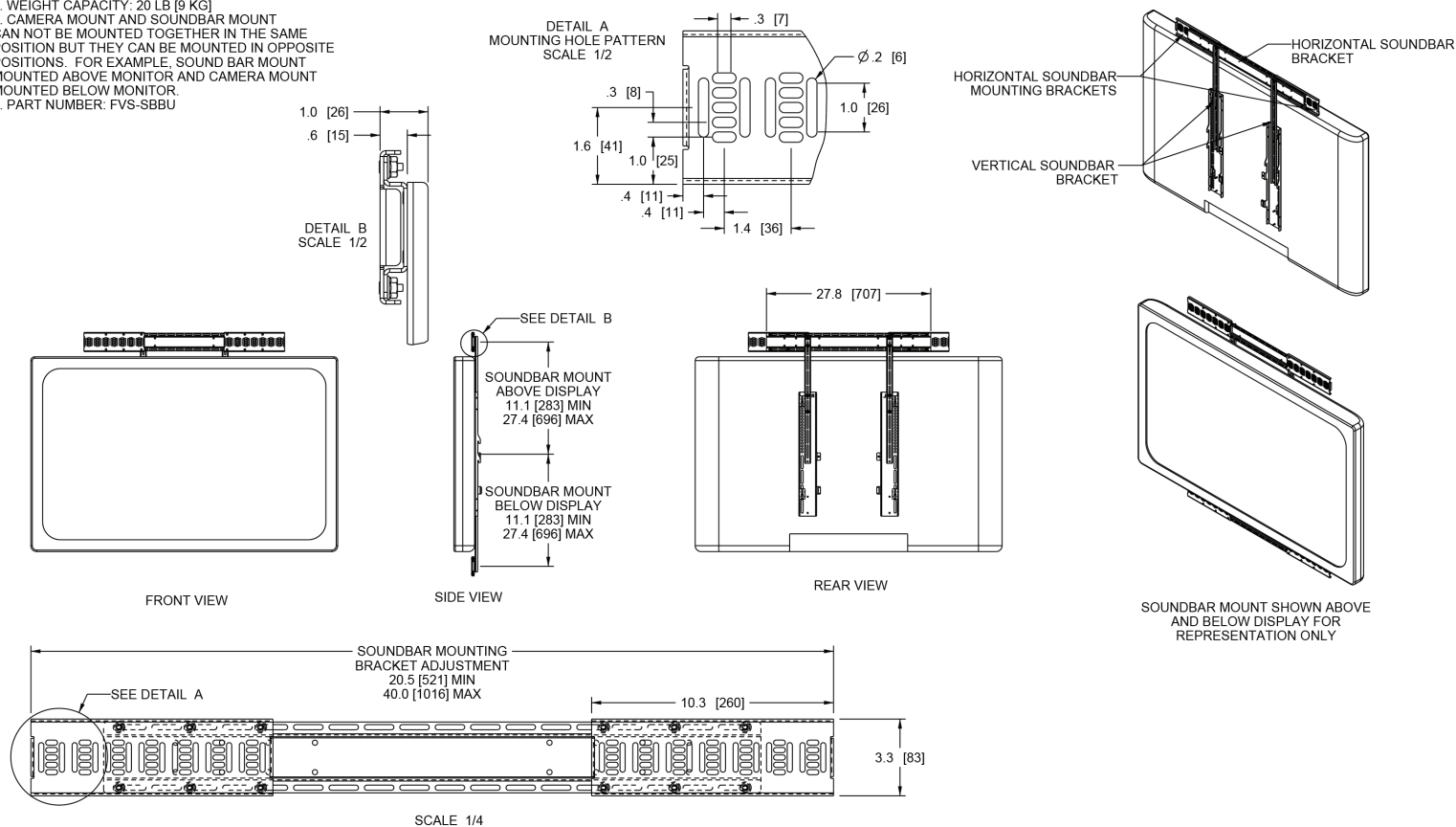
# FlexView Series

## SOUNDBAR MOUNT BASIC DIMENSIONS

All dimensions in inches unless otherwise noted. [All dimensions in brackets are in millimeters]

**NOTE(S):**

1. DIMENSIONS SHOWN: IN [MM]
2. WEIGHT CAPACITY: 20 LB [9 KG]
3. CAMERA MOUNT AND SOUNDBAR MOUNT CAN NOT BE MOUNTED TOGETHER IN THE SAME POSITION BUT THEY CAN BE MOUNTED IN OPPOSITE POSITIONS. FOR EXAMPLE, SOUNDBAR MOUNT MOUNTED ABOVE MONITOR AND CAMERA MOUNT MOUNTED BELOW MONITOR.
4. PART NUMBER: FVS-SBBU



WHAT GREAT SYSTEMS ARE BUILT ON™ | [legrandav.com](http://legrandav.com)

USA 800.266.7225 [av.middleatlantic.support@legrand.com](mailto:av.middleatlantic.support@legrand.com)

CANADA 888.766.9770 [av.middleatlantic.support@legrand.com](mailto:av.middleatlantic.support@legrand.com)

**LEGRAND | AV COMMERCIAL BRANDS**

C2G | Chief | Da-Lite | Luxul | Middle Atlantic | Vaddio | Wiremold