

# PARKWAY MODULAR SECTIONAL OTTOMAN

Model: 4560-6450  
Collection: Parkway Modular  
Designer: John Caldwell

BROWN JORDAN™



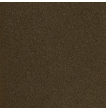
Parkway Modular provides a modular seating option to coordinate with the popular Parkway Sling and Parkway Cushion collections. The ten-piece collection can be positioned to form an L shape or a variety of geometric shapes that easily allows for entertaining large groups. The Sectional Ottoman Cushions can be altered to accept welting and create a versatile multi-use piece as an extra seat, a footrest, or chaise.

## Specifications

Height (in)	17.5
Width (in)	35
Depth (in)	35
Seat Height (in)	17.5
Weight (lbs)	20.5

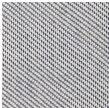
## Material Options

### Frame Finishes



Pompeian Gold

### Fabrics



Atlantic - Grade B