



BRAMBLE

PRODUCT TEARSHEET



Narrow Shutter 3 Door Sideboard

Shown in: **SNW**

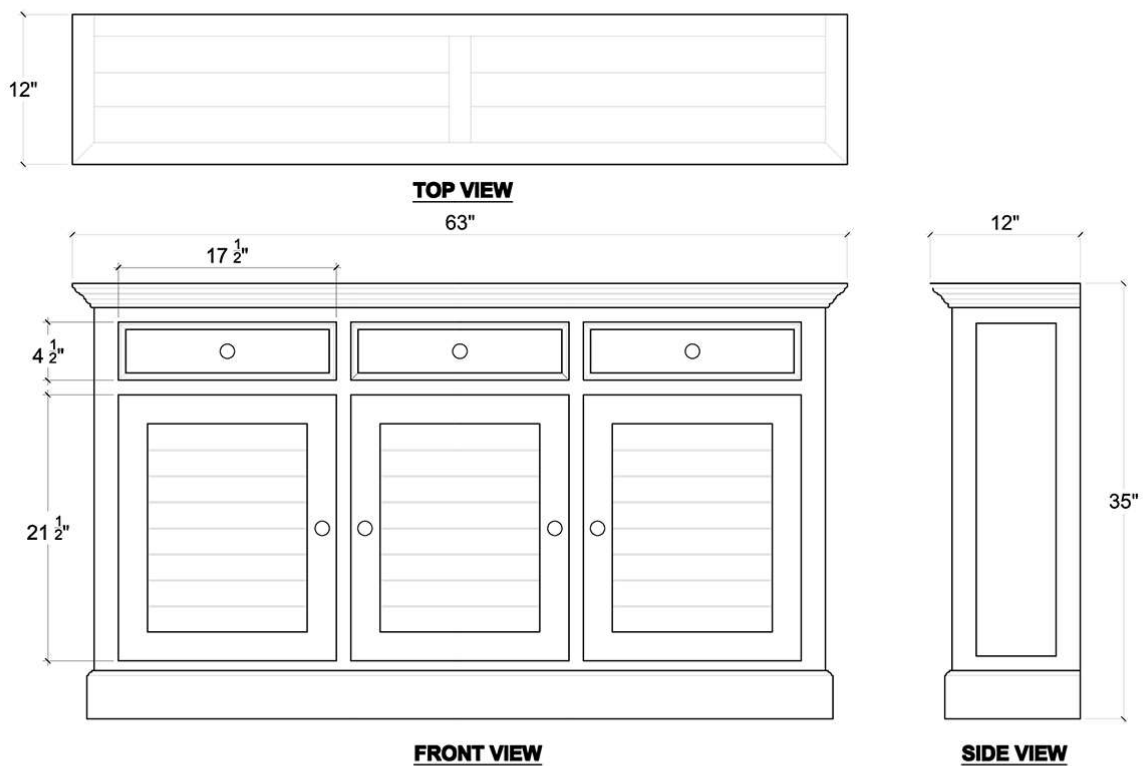
SKU: **25742**

Size: **63W x 12D x 35H in**



Overview

Enjoy the island-inspired style of the Narrow Shutter 3-Door Sideboard, which lends ample storage space to any room in the home. Built in mahogany, the sideboard features three louvered doors and three dovetail drawers to keep serveware or accessories organized. This piece is offered with a vast array of finish and distress options to create a truly custom design.



Visual Highlights





Technical Specification

| | | | |
|----------------------|------------------------------|------------------|-----------------------------|
| Dimensions | 63W x 12D x 35H in | CBM | 0.55678 |
| Number of Packages | 1 | Cubic Feet | 19.66 ft³ |
| Package 1 Dimensions | 66.1 x 15.4 x 40.9 in | Package 1 Weight | 105.82 lbs |
| Package Weight Total | 105.82 lbs | Net Weight | 99.21 lbs |
| Material | Mahogany | Best Seller | |

<https://www.brambleco.com/25742>