

# CORNUFÉ LOGE: CH3630LGE & CH4430LGE



## SPECIFICATIONS

**Models:**  
36" & 44"

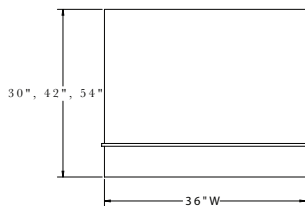
**Hood Style:**  
Box

**Product Dimensions:**  
*Hood Width x Depth x Height*  
36"W x 24"D x 30"H, 42"H or 54"H (600 cfm/8" collar)  
44"W x 24"D x 30"H, 42"H or 54"H (1200 cfm/10" collar)

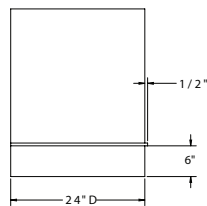
**Product Weight:**  
36"(30"H) : 104 lbs  
36"(42"H) : 122 lbs  
36"(54"H) : 141 lbs  
44"(30"H) : 130 lbs  
44"(42"H) : 151 lbs  
44"(54"H) : 172 lbs

**Electrical Requirements:**  
600 CFM models draw approx. 2.7 Amps  
1200 CFM models draw approx. 5.4 Amps

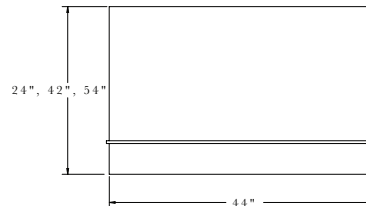
**Hood Sone Level:**  
Ranges from 5-7



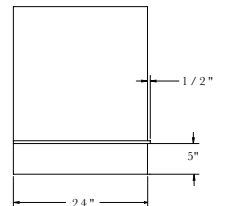
FRONT VIEW



SIDE VIEW



FRONT VIEW



SIDE VIEW

## COLOR & TRIM FINISHES

**Five Classic Colors:** Matte Black, Stainless Steel, Gloss Black, Provence Blue, and Pure White

**Four Étoile Colors:** Morning Dew, Graphite, Ocean, and Wintersky

**Three Trim Options:** Polished Brass, Satin Chrome, and Polished Chrome

# CORNUFÉ LOGE: CH3630LGE & CH4430LGE

## PRODUCT FEATURES

### Quiet Operation

Large 3 speed blower operates at lower RPM reducing the sound level.

### Lighting

Bright LED lighting offers natural looking, 3000K color spectrum. The 36" hood features 2 lights, the 44" hood features 2 lights.

### Ease of Operation

Electronic touch controls for 3 speed blower and LED lights.

### Easy Cleaning

Dishwasher safe, commercial style baffle filters for effectively removing airborne contaminants.

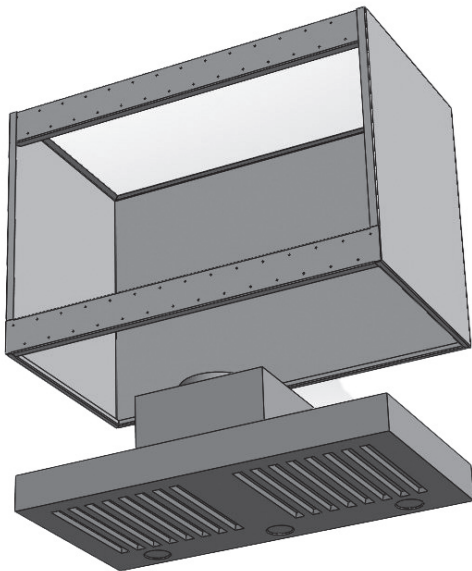
Detergent inlet holes and grease exit holes in baffle filters for superior dishwasher cleaning.

### Flexible Installation

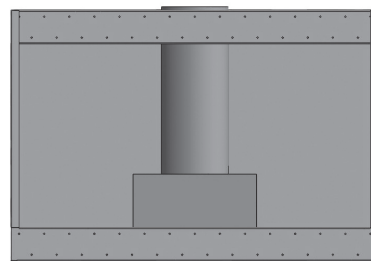
Mounting bars at top and bottom allow for attaching to stud supports. Open top and back design for centered duct location or offset top duct and/or rear offset discharge.

### Energy Efficient Operation

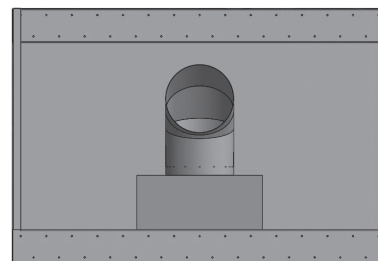
LED light bulbs draw only 6 watts each and energy efficient motors draw only 2.5 amps.



Rear view showing liner is easily removed and reinstalled for simply mounting of hood shell to the wall



Rear view of standard, centered top venting. Open top design allowing simple R/L offset top ducting



Rear view of standard, centered rear venting. Open back design allowing simple R/L offset rear ducting