

# ***INSTALLATION & OPERATION MANUAL***

---

## **CONSERVATOR**

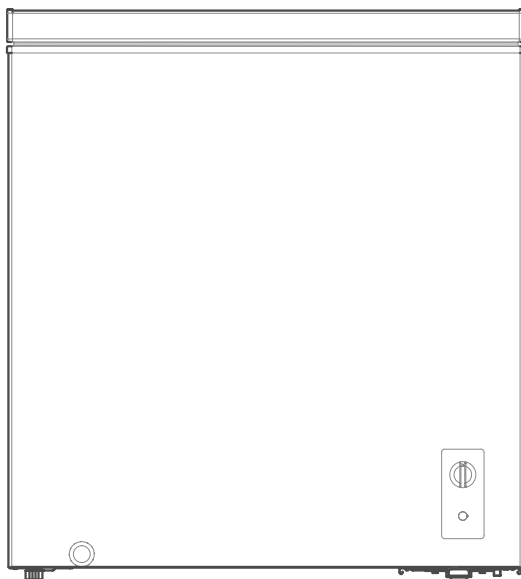
---

### **CHEST FREEZER**

**VFM05TW**

**VFM07TW**

**VFM10TW**







# Contents

- Important safety instructions ..... 2**
- Environmental protection..... 5**
- Install Instruction..... 6**
  - Remove the cable from inside the compartment ..... 7
- Product overview ..... 8**
  - Parts and functions ..... 8
- Operation Instructions ..... 9**
  - Use and functions..... 9
  - Storing food..... 10
  - Tips for energy saving..... 10
- Maintenance and cleaning..... 11**
- Troubleshooting..... 13**

## Before switching on the appliance for the first time read the following safety hints!

- > This appliance is intended to be used in household and similar applications such as staff kitchen areas in shops, offices and other working environments; farm houses and by clients in hotels, motels and other residential type environments; bed and breakfast type environments; catering and similar non-retail applications.
- > This appliance is not intended for use by persons (including children) with reduced physical, sensory or mental capabilities, or lack of experience and knowledge, unless they have been given supervision or instruction concerning use of the appliance by a person responsible for their safety.

## Explanation of terms/symbols

	<b>DANGER</b> This symbol indicates that there are dangers to the life and health of persons due to extremely flammable gas.
	<b>WARNING</b> The signal word indicates a hazard with a medium level of risk which, if not avoided, may result in death or serious injury.
	<b>CAUTION</b> The signal word indicates a hazard with a low degree of risk which, if not avoided, may result in minor or moderate injury.
	<b>ATTENTION</b> The signal word indicates important information (e.g. damage to property), but not danger.

**IMPORTANT:** Pay particular attention to messages that contain the words **DANGER**, **WARNING** or **CAUTION**. These words are used to alert you to a potential hazard that can seriously injure you and others.

The instructions will tell you how to reduce the chance of injury and let you know what can happen if the instructions are not followed.

**ATTENTION:** These operating instructions are general. This means that certain functions apply to your refrigerator/freezer, while others do not.

We are constantly working on the further development and improvement of our appliance types and models. Therefore, we reserve the right to make changes to the design, equipment and accessories of all types and models without prior notice.

# IMPORTANT SAFETY INSTRUCTIONS

## READ AND SAVE THESE INSTRUCTIONS!



### **WARNING: Risk of fire / flammable material**

Refrigerant and cyclopentane foaming material used for the appliance are flammable. Therefore, when the appliance is scrapped, it shall be kept away from any fire source and be recovered by a special recovering company with corresponding qualification other than be disposed by combustion, so as to prevent damage to the environment or any other harm



## **WARNING**

### **General Safety**

- > Children should be supervised to ensure that they do not play with the appliance.
- > If the supply cord is damaged, it must be replaced by the manufacturer, its service agent or similarly qualified persons in order to avoid a hazard.
- > Do not store explosive substances such as aerosol cans with a flammable propellant in this appliance.
- > The appliance has to be unplugged after use and before carrying out user maintenance on the appliance.
- > **WARNING:** Keep ventilation openings, in the appliance enclosure or in the built-in structure, clear of obstruction.
- > **WARNING:** Do not use mechanical devices or other means to accelerate the defrosting process, other than those recommended by the manufacturer.
- > **WARNING:** Do not damage the refrigerant circuit.
- > **WARNING:** Do not use electrical appliances inside the food storage compartments of the appliance, unless they are of the type recommended by the manufacturer.
- > **WARNING:** Please abandon the freezer according to local regulators for it use flammable blowing gas and refrigerant.
- > **WARNING:** When positioning the appliance, ensure the supply cord is not trapped or damaged.
- > **WARNING:** Do not locate multiple portable socket-outlets or portable power supplies at the rear of the appliance.
- > Do not use extension cords or ungrounded (two prong) adapters.
- > To avoid a hazard due to instability of the appliance, it must be fixed in accordance with the instructions.
- > The freezer must be disconnected from the source of electrical supply before attempting the installation of accessory. Ensure that the power cable is not trapped by the freezer. Do not step on the power cable.
- > For a freestanding appliance: this refrigerating appliance is not intended to be used as a built-in appliance.



## CAUTION

### Daily use

- > Do not pull the power cord when pulling the power plug of the freezer. Please firmly grasp the plug and pull out it from the socket directly.
- > To ensure safe use, do not damage the power cord or use the power cord when it is damaged or worn.
- > Please use a dedicated power socket and the power socket shall not be shared with other electrical appliances.
- > The power plug should be firmly contacted with the socket or else fires might be caused.
- > Please ensure that the grounding electrode of the power socket is equipped with a reliable grounding line.
- > Please turn off the valve of the leaking gas and then open the doors and windows in case of leakage of gas and other flammable gases.
- > Do not unplug the freezer and other electrical appliances considering that spark may cause a fire.
- > Do not use electrical appliances on the top of the appliance, unless they are of the type recommended by the manufacturer.
- > The gaps between freezer doors and between doors and freezer body are small, be noted not to put your hand in these areas to prevent from squeezing the finger. Please be gentle when close the freezer door to avoid falling articles.
- > Do not pick foods or containers with wet hands in the freezing chamber when the freezer is running, especially metal containers in order to avoid frostbite.
- > Do not allow any child to get into or climb the freezer; otherwise suffocation or falling injury of the child may be caused.
- > Do not place heavy objects on the top of the freezer considering that objectives may fall when close or open the door, and accidental injuries might be caused.
- > Do not put flammable, explosive, volatile and highly corrosive items in the freezer to prevent damages to the product or fire accidents.
- > Do not place flammable items near the freezer to avoid fires.
- > The freezer is intended for household use, such as storage of foods; it shall not be used for other purposes, such as storage of blood, drugs or biological products, etc.
- > Do not store beer, beverage or other fluid contained in bottles or enclosed containers in the freezing chamber of the freezer; or otherwise the bottles or enclosed containers may crack due to freezing to cause damages.



## WARNING

- > To prevent children from being entrapped, the keys must be kept out of reach of children and not in the vicinity of chest freezer (or refrigerator) (suitable for products with locks).(\*)

**(\*)**: This feature varies depending on the model purchased.



## WARNING

### State of California Proposition 65 Warnings:

This product can expose you to chemicals including lead, which is known to the State of California to cause cancer, and bisphenol A (BPA) and lead which are known to the state of California to cause birth defects or other reproductive harm. For more information go to

[www.P65Warnings.ca.gov](http://www.P65Warnings.ca.gov).



## WARNING

### Child Safety

Destroy or recycle the carton, plastic bags, and any exterior wrapping material immediately after the appliance is unpacked. Children should **NEVER** use these items to play. Cartons covered with rugs, edspreads, plastic sheets or stretch wrap may become airtight chambers, and can quickly cause suffocation.



## CAUTION

**To avoid contamination of food, please respect the following instructions:**

- Opening the door for long periods can cause a significant increase of the temperature in the compartments of the appliance.
- Clean regularly surfaces that can come in contact with food and accessible drainage systems.



## CAUTION

**This product is not recommended for use with sockets or main switch with the AFCI/ GFCI function, otherwise it may cause false tripping.**

1. It does not pose a safety risk when tripped.
2. If tripping persists, it is recommended to replace the sockets or main switch without AFCI/GFCI function.



## WARNING

**Risk of child entrapment. Before you throw away your old refrigerator or freezer:**

- > Take off the doors.
- > Leave the shelves in place so that children may not easily climb inside.

# ENVIRONMENTAL PROTECTION

## Disposing of old electrical devices in an environmentally-friendly manner



This crossed-out wheeled bin symbol indicates that waste electrical and electronic products (WEEE) should be disposed of separately from the municipal waste stream.

Old electrical products can contain hazardous substances so correct disposal of your old appliance will help prevent potential negative consequences for the environment and human health. Your old appliance may contain reusable parts that could be used to repair other products, and other valuable materials that can be recycled to conserve limited resources.

## Package information



Packaging materials of the product are manufactured from recyclable materials in accordance with our National Environment Regulations. Do not dispose of the packaging materials together with the domestic or other wastes. Take them to the packaging material collection points designated by the local authorities.

### CAUTION

Refrigerant and cyclopentane foaming material used for the freezer are flammable. Therefore, when the freezer is scrapped, it shall be kept away from any fire source and be recovered by a special recovering company with corresponding qualification other than be disposed by combustion, so as to prevent damage to the environment or any other harm.

# INSTALL INSTRUCTION

## Before first use

Remove the exterior and interior packing, wipe the outside thoroughly with a soft dry cloth and the inside with a wet, lukewarm cloth.

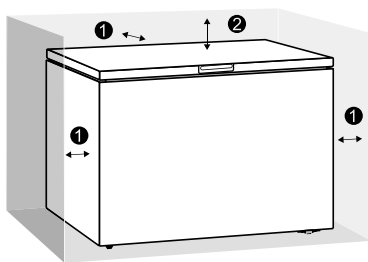
Avoid placing the cabinet in a narrow recess or near any heat source, direct sunlight, or moisture.

Adequate air circulation is required for efficient operation. Maintain the recommended clearance to ensure adequate air circulation.

Before connecting your freezer to the power supply, check that the voltage stated on the rating label of your appliance corresponds to the voltage in your home. A different voltage could damage the appliance.

The appliance must be grounded. The manufacturer is not responsible for damages that may occur as a result of usage without grounding.

## Recommended clearance

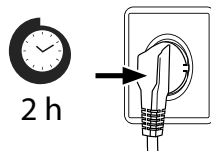


① : 20 cm Between sides and back of cabinet and walls (8")

② : 70 cm Above the freezer (28")

## Connecting the appliance

After installing the product, please let it stay off for more than 2 hours before turning on the power, otherwise it will lead to a decrease in cooling capacity or a damage to the product.



**Allow the appliance to run empty for 24 hours so the compartment can cool to the appropriate temperature.**

### CAUTION

The freezer should always be plugged into its own individual electrical outlet which has a voltage rating that matches the rating plate. When positioning the appliance, ensure the supply cord is not trapped or damaged.

## Providing a proper power supply

Check your local power source. This freezer requires a AC115 V, 60 Hz power supply.

Use a receptacle that accepts the grounding prong. The power cord is equipped with a 3-prong (grounding) plug which mates with a standard 3-prong (grounding) wall outlet to minimize the possibility of electric shock hazard from this freezer.

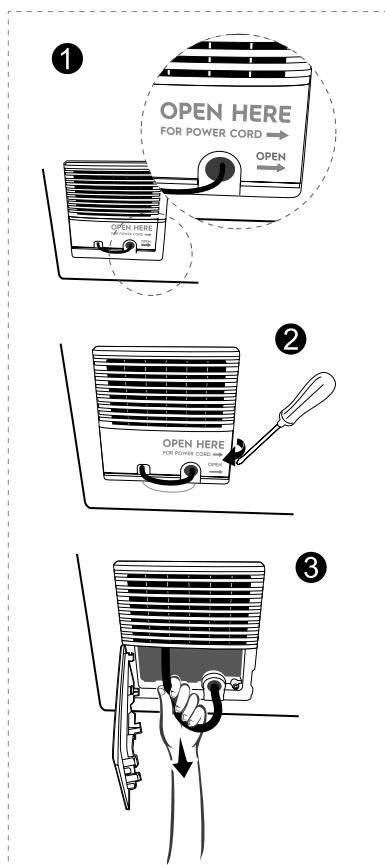
**If you have any doubts regarding installation, please turn to the vendor, to our customer service or to the nearest Authorised Service Centre.**

### CAUTION

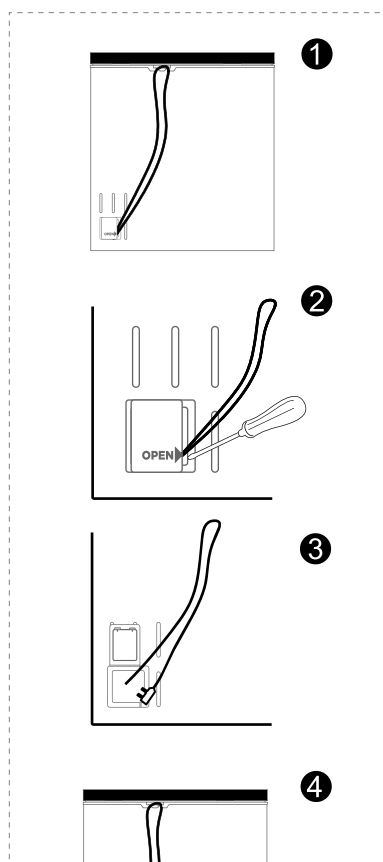
The freezer should always be plugged into its own individual electrical outlet which has a voltage rating that matches the rating plate. When positioning the appliance, ensure the supply cord is not trapped or damaged.

## Remove the cable from inside the compartment

1. Use a tool (flat screwdriver or cone), insert it into the gap at the arrow position in the picture and gently pry it open to the outside so as to open the flap.
2. After opening the picture as shown below, remove the power cord from the hole.
3. After the power cord is removed, return the cover to the original position.
1. Checking whether power cords is in good condition.
2. Using a tool (slotted screwdriver or cone-shape tool), insert it into the gap where the OPEN-arrow points to and gently pry it outward to open the cover.
3. After opening the cover, take out the power cord plug from the hole, and then close the cover.
4. Gently take out the power cord from the top hook.



VFM10TW

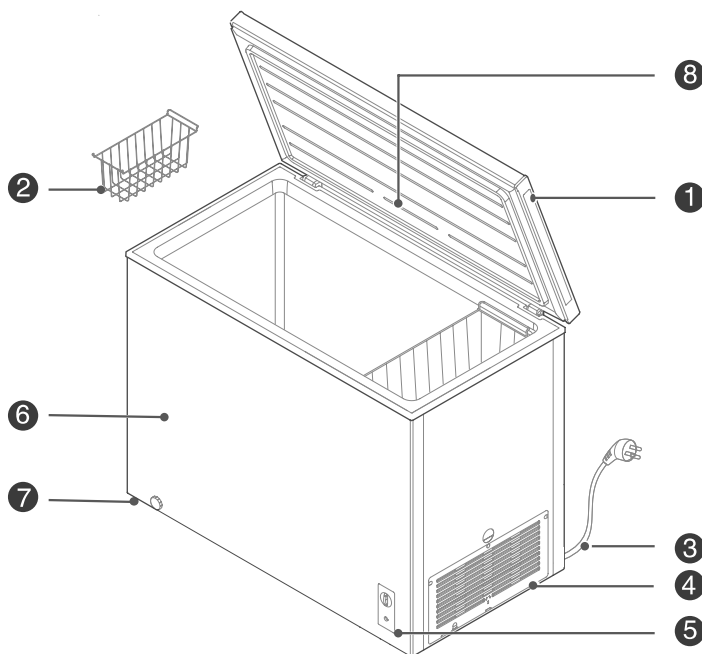


VFM05TW

VFM07TW

# PRODUCT OVERVIEW

## Parts and functions



- |   |                           |   |                            |
|---|---------------------------|---|----------------------------|
| 1 | Door handle               | 2 | Shelving basket (optional) |
| 3 | Power cord                | 4 | Shutter                    |
| 5 | Temperature control panel | 6 | Cabinet                    |
| 7 | Leveling foot             | 8 | Lamp (optional)            |

- > This refrigerating appliance needs to be installed independently and cannot be used as a built-in and all clearances on page 6 must be followed. Otherwise, it will cause problems such the performance and life of the appliance are reduced and the manufacturer's warranty may be voided.
- > The freezing speed of the product is related to the amount of food stored and the ambient temperature. If too much normal temperature food is put in at the same time, the thermostat shall be adjusted to the maximum gear 24 hours in advance or prepare ice ahead for cold storage, and the large food shall be divided into small pieces and put in several times, otherwise the large size or amount food cannot be frozen locally, and the food may deteriorate. 2 - 3 lbs per cubic foot of room temperature food can be frozen in 24 hours.

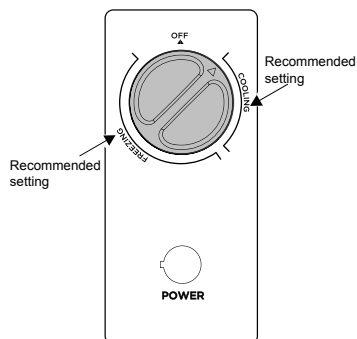
### ATTENTION

**Differences:** Due to technical changes and different models, some of the illustrations in this manual may differ from your model.

# OPERATION INSTRUCTIONS

## Use and functions

### Temperature control



After power on the **“POWER”** indicator light will be light ( green ).

- > The area where the temperature controller knob points to **“COOLING”** is the refrigeration area, and **“FREEZING”** is the frozen area.
- > When the temperature controller knob is turned clockwise, the temperature inside the freezer decreases.
- > When the temperature controller knob is turned counterclockwise, the temperature inside the freezer increases.
- > At the **“OFF”** position: turn off the freezer.
- > Please refer to the schematic diagram to identify the **“Recommended setting”**.

#### NOTE:

**Do not store fluids in bottled or closed containers Items such as bottled beer, beverages, etc.**

#### **ATTENTION**

The actual control panel may differ from model to model.

## Storing food

### Freezer compartment

The freezer compartment is designated for the low-temperature freezing of food, long-term storage of frozen food, and for the production of ice cubes.

When freezing large amounts of fresh food (such as meat, fish or chopped meat), please divide them into several small pieces before putting in, so that they can be quickly frozen and pick up easily.

Abide by the storage times recommended by food manufacturers on the packages, there is no information on the packaging, food should not be stored frozen for longer than three months from the date of purchase.

When purchasing frozen food, make sure that it was frozen at a suitable temperature and that the packaging is not damaged.

Frozen food should be kept in suitable individual packages to ensure that adjacent food cannot be contaminated. Consume thawed and defrosted foods immediately, do not refreeze them.

In case of prolonged power failure or malfunction of the appliance, remove the stored frozen food and check whether they are still edible, then store them in a sufficiently cool place or in another appliance.

To defrost food, remove it from the freezer and let it defrost at room temperature or in the freezer. To defrost food quickly, you can use the defrost function on your microwave, for example.

If you only want to defrost part of a pack, remove the portion you need and immediately close the rest of the pack. In this way, you will avoid "freezer burn" and will reduce ice formation on the remaining foods.

### ATTENTION

Storage of too much food during operation after the initial connection to power may adversely affect the freezing effect of the freezer.

### Storage times and temperature

Note: Overlong storage or storage at inappropriate freezing temperature may cause a quality loss or spoiled foods, which causes food waste, is inedible and may cause food poisoning. The minimum temperature in most cases should be -18°C or colder. Follow the maximum recommended storage times below:

- > Stew, ice cream, sausages, bread: 2-6 months.
- > Fish, shrimp, lamb, meat: 4-8 months.
- > poultry, beef: 6-12 months.

## Tips for energy saving

Do not place the appliance near cookers, radiators or other heat sources. If the ambient temperature is high, the compressor will run more frequently and for longer, resulting in increased energy consumption.

Ensure that there is sufficient ventilation at the base of the appliance, on the sides of the appliance and at the back of the appliance.

To obtain a larger storage space (e.g. for large refrigerated/frozen goods), the middle drawers and shelves can be removed. The top and bottom drawers and shelves should be removed last if necessary.

An evenly filled refrigerator/freezer compartment contributes to optimal energy use.

Allow warm food to cool before placing it in the refrigerator/freezer compartment. Food that has already cooled down increases energy efficiency.

Open the door only as briefly as necessary to minimise cold loss. Opening the door briefly and closing it properly reduces energy consumption.

The door gaskets of your appliance must be perfectly intact so that the doors close properly and energy consumption is not increased unnecessarily.

# MAINTENANCE AND CLEANING



## CAUTION

Disconnect the appliance from the electrical supply before undertaking any routine maintenance. Allow at least 5 minutes before restarting the appliance, as frequent starting may damage the compressor.

Do not use mechanical devices or other means to accelerate the defrosting process, other than those recommended by the manufacturer.

Do not try to repair, disassemble or modify the appliance by yourself. In case of repair please contact our customer service.

Eliminate the dust on the back of the unit at least once in the year to avoid hazard by fire, as well as increased energy consumption.

Check the door gasket regularly to make sure there are no debris. Clean the door gasket with a soft cloth dampened with soapy water or diluted detergent.

The interior of the product should be cleaned regularly to avoid odor.

Use a soft cloth or sponge to clean the inside of the product, with two tablespoons of baking soda and a quart of warm water. Then rinse with water and wipe clean. After cleaning, open the door and let it dry naturally before turning on the power.

For areas that are difficult to clean in the product (such as narrow sandwiches, gaps or corners), it is recommended to wipe them regularly with a soft rag, soft brush, etc. and when necessary, combined with some auxiliary tools (such as thin sticks) to ensure no contaminants or bacteria accumulation in these areas.

Wipe the outer surface of the product with a soft cloth dampened with soapy water, detergent, etc., and then wipe dry.

Do not use hard brushes, clean steel balls, wire brushes, abrasives (such as toothpastes), organic solvents (such as alcohol, acetone, banana oil, etc.), boiling water, acid or alkaline items, which may damage the fridge surface and interior. Boiling water and organic solvents such as benzene may deform or damage plastic parts.



Do not rinse directly with water or other liquids during cleaning to avoid short circuits or affect electrical insulation after immersion.

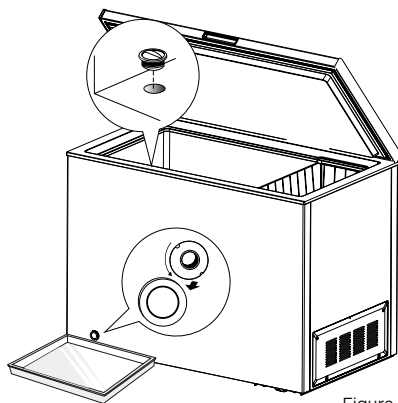
## ● ATTENTION

The appliance shall run continuously once it is started. Generally, the operation of the appliance shall not be interrupted; otherwise the service life may be impaired

## Defrosting

**Your freezer is designed for year-round use with only minimal cleaning and maintenance. We recommend that you do the following every time you clean it to keep your freezer running odor-free and efficiently:**

1. Power off the freezer.
2. Remove the food from the freezer and place it properly to prevent food from melting.
3. Clear the drain pipe (to use soft materials to prevent damage to the liner), Prepare the water containers for defrosting. (pay attention to clean the compressor compartment water draining tray, Avoiding overflow to the ground).
4. You can use the natural temperature for the natural defrost, you can also use the ice shovel to eliminate the frost (to use plastic or wooden ice shovel, for avoiding damage to the liner or pipe)
5. Pull out the drain plug inside the appliance, and pull off the outside defrost drain plug. Defrost water will drain out. Check pan occasionally so water does not overflow. Replace the drain plugs when defrosting is completed.
6. You can also use the appropriate amount of hot water to speed up the defrost, with a dry towel to dry the water after defrosting.
7. After defrosting, put back the foods in cabinet, and power on the freezer.



Figure

### ● ATTENTION

The appliance shall run continuously once it is started. Generally, the operation of the appliance shall not be interrupted; otherwise the service life may be impaired

# TROUBLESHOOTING

The following simple issues can be handled by the user. Please call the after-sale service department if the issues are not solved.

Problem	Possible Causes	Solution
Not operate	<ul style="list-style-type: none"> <li>The power supply is not turned on and the plug is not firmly inserted.</li> <li>Low voltage, power failure or part of the circuit tripped.</li> </ul>	<ul style="list-style-type: none"> <li>Insert the power cord plug firmly.</li> <li>Check the power supply at home.</li> </ul>
Compressor working for a long time	<ul style="list-style-type: none"> <li>High ambient temperature causing long working time.</li> <li>Putting too much food in at one time.</li> <li>Food is put in before it has cooled down.</li> <li>Opening the door too often.</li> <li>The frost layer inside is too thick.</li> </ul>	<ul style="list-style-type: none"> <li>This is normal.</li> <li>Do not put too much food in at one time.</li> <li>Wait until the food has cooled down before putting it in.</li> <li>Do not open the door too often.</li> <li>Need to defrost.</li> </ul>
Door does not close properly	<ul style="list-style-type: none"> <li>Door is stuck with objects.</li> <li>Too much food in.</li> <li>Door gasket deformed.</li> </ul>	<ul style="list-style-type: none"> <li>Do not put in too much food.</li> <li>Place the appliance stably.</li> <li>Heat the door gasket, then cool it for restoration (with an electrical drier or hot water for heating).</li> </ul>
Outer wall is hot	<ul style="list-style-type: none"> <li>When the appliance is operating, heat is dissipated to the outside through the metal tubes inside the cabinet.</li> <li>Higher ambient temperatures in the summer cause the temperature of the outer wall to rise.</li> </ul>	<ul style="list-style-type: none"> <li>Higher temperature on the outer wall is normal.</li> <li>Increase the heat dissipation space, or put the appliance in a ventilated and cool place.</li> </ul>
Odors	<ul style="list-style-type: none"> <li>Spoiled food</li> <li>Food with strong odors</li> <li>The interior compartment is dirty.</li> </ul>	<ul style="list-style-type: none"> <li>Clean and remove any spoiled food.</li> <li>Make sure strong smelling food is wrapped airtight.</li> <li>Clean the interior compartment.</li> </ul>
Condensation forms on the outside	<ul style="list-style-type: none"> <li>Condensation may form when the humidity in the room is high.</li> </ul>	<ul style="list-style-type: none"> <li>This is normal. Wipe off the condensation using a dry cloth.</li> </ul>
Hard to open the door	<ul style="list-style-type: none"> <li>The difference in air pressure between the inside and outside of the compartment may sometimes make it hard to open the freezer door.</li> </ul>	<ul style="list-style-type: none"> <li>Wait a few moments, and then try to open the door slowly.</li> </ul>

**Certain sounds can be heard during normal use of the freezer, which do not affect its correct operation.**

## Sounds, which can be easily prevented:

- > Noise caused by the appliance which is not level - adjust the position with the adjustable turn-in front feet. Alternatively, place pads made of soft material under the rear rollers, especially when the appliance is placed on tiles.
- > Touching the adjacent piece of furniture - move the freezer away.

Sounds heard during normal use are mainly due to operation of the compressor (switching on) and cooling, system (thermal expansion and contraction of the radiator caused by flow of the cooling agent).

# WARRANTY

## FREEZER WARRANTY

Your freezer is protected by this warranty

	WARRANTY PERIOD	THROUGH OUR AUTHORIZED SERVICERS, WE WILL:	THE CONSUMER WILL BE RESPONSIBLE FOR:
FULL ONE-YEAR WARRANTY	One year from original purchase date	Pay all costs for repairing or replacing any parts of this appliance which prove to be defective in materials or workmanship. Excludes original and replacement ice & Water filter cartridges (if equipped). Original and replacement cartridges are warranted for 30 days (parts only).	Costs of service calls that are listed under <b>NORMAL RESPONSIBILITIES OF THE CONSUMER. *</b>

☐ In the U.S.A., your appliance is warranted by The Crosley Group, Inc. We authorize no person to change or add to any of our obligations under this warranty. Our obligations for service and parts under this warranty must be performed by an authorized Crosley servicer. In Canada your appliance is warranted by Crosley Canada Corp.

### \*NORMAL RESPONSIBILITIES OF THE CONSUMER

**This warranty applies only to products in ordinary household use, and the consumer is responsible for the items listed below:**

- 1 Proper use of the appliance in accordance with instructions provided with the product.
- 2 Proper installation by an authorized servicer in accordance with instructions provided with the appliance and in accordance with all local plumbing, electrical and/or gas codes.
- 3 Proper connection to a grounded power supply of sufficient voltage, replacement of blown fuses, repair of loose connections or defects in house wiring.
- 4 Expenses for making the appliance accessible for servicing, such as removal of trim, cupboards, shelves, etc., which are not part of the appliance when it was shipped from the factory.
- 5 Damages to finish after installation.
- 6 Replacement of light bulbs and/or fluorescent tubes (on models with these features).

### EXCLUSIONS

**This warranty does not cover the following:**

- 1 CONSEQUENTIAL OR INCIDENTAL DAMAGES SUCH AS PROPERTY DAMAGE AND INCIDENTAL EXPENSES RESULTING FROM ANY BREACH OF THIS WRITTEN OR ANY IMPLIED WARRANTY.  
NOTE: Some states do not allow the exclusion or limitation of incidental or consequential damages, so this limitation or exclusion may not apply to you.
- 2 Service calls which do not involve malfunction or defects in workmanship or material, or for appliances not in ordinary household use. The consumer shall pay for such service calls.
- 3 Damages caused by services performed by servicers other than Crosley Corporation, Crosley Canada Corp. or its authorized servicers; use of parts other than genuine Crosley Corporation parts, obtained from persons other than such servicers; or external causes such as abuse, misuse, inadequate power supply or acts of God.
- 4 Products with original serial numbers that have been removed or altered and cannot be readily determined.

### IF YOU NEED SERVICE

Keep your bill of sale, delivery slip, or some other appropriate payment record. The date on the bill establishes the warranty period should service be required. If service is performed, it is in your best interest to obtain and keep all receipts. This written warranty gives you specific legal rights. You may also have other rights that vary from state to state. Service under this warranty must be obtained by contacting Crosley Corporation or Crosley Canada Corp.

This warranty only applies in the 50 States of the U.S.A., in Puerto Rico, and in Canada. Product features or specifications as described or illustrated are subject to change without notice. All warranties are made by Crosley Corporation. In Canada, your appliance is warranted by Crosley Canada Corp

Rev. 01/2013

### FOR WARRANTY INFORMATION

#### CONTACT:

**844-CROSLEY (844-276-7539)**

CrosleyCare Service

3 Sperry Rd.

Fairfield, NJ 07004

### For Extended Warranty or

#### Other Information Contact:

**800-356-5268**

Crosley Extended Warranty

11430 Gravois Rd

Suite 310

St. Louis, MO 63126

[www.crosley.com](http://www.crosley.com)

**Disclaimer: The design and specifications are subject to change without prior notice for product improvement.**