

60" *precision series*™

Range-top



GRT604GW

60" RANGE-TOP FEATURES

- 140 Deg. Simmer – 19,000 BTU Power-Flo™ burners (sealed)*
- 800 – 30,000 BTU Power-Wok™ burner*
- 18,000 BTU Infra-Q™ infrared BBQ grill*
- 18,000 BTU Thermo-Griddle™ - 3/8" thick thermostatically controlled griddle plate
- 30,000 BTU Double Thermo-Griddle™
- BBQ grill sections includes Tru-Side™ channeling grates that reduce flare-ups*
- Full extension drip trays on EZ-Glides*
- Stay-Cool™ die cast, chrome plated metal knobs*
- Auto-ignition/re-ignition on all sealed burners
- Stainless steel BBQ grill and griddle covers come standard
- Smooth-top continuous cast iron grates with easy to clean matte porcelain finish

AVAILABLE ACCESSORIES

- Conversion kits
- Birch wood chopping blocks
- CRK60 – Cabernet red knobs
- P60SLB – 9" stainless steel wall mount low back
- P60SHS – 19" stainless steel wall mount high shelf
- Wok ring

COMPLIMENTARY PRODUCTS

- PSVH60HL – 60" Performance Series vent hood w/ 600 CFM blower + heat lamps + lights
- PSVH60L – 60" Performance Series vent hood w/ 600 CFM blower + lights
- Duct Covers
- GRT24WK – 24" 30,000 BTU built in Power-Wok™ range-top
- GRT30Q – 30" 40,000 BTU built in Infra-Q™ infrared BBQ-grill

SHIPPING WEIGHT

250-325 LBS

ELECTRICAL RATINGS

VOLTAGE	CURRENT/POWER	FREQUENCY
120 VAC	15 AMP	60 HZ

GAS RATINGS

	NATURAL GAS	PROPANE
Manifold pressure:	5.0" W.C.	10" W.C.

OTHER

- "0" clearance base cabinet installation
- Field convertible to LP or NG depending on gas type
- ETL certified for USA and Canada
- 2 years full parts and labor covers entire product (conditions apply)

* Capital Exclusive Feature



Capital exclusive feature:
Power-Flo™ burners.
19,000 BTU - 140 deg. simmer



Optional cabernet red knobs



Infra-Q™ BBQ grill sear pod



30,000 BTU Power-Wok™

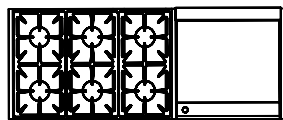


Chopping block

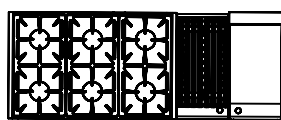
GAS RANGE-TOP MODELS AVAILABLE



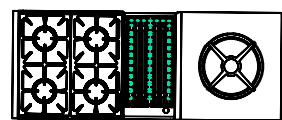
GRT606W – 60" 6 burner w/ 24" Power-Wok™ range-top



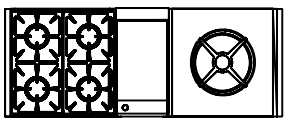
GRT606G – 60" 6 burner w/ 24" Thermo-Griddle™ range-top



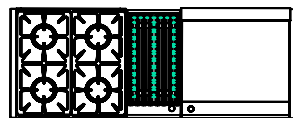
GRT606QG – 60" 6 burner w/ 12" Infra-Q™ + 12" Thermo-Griddle™ range-top



GRT604QW – 60" 4 burner w/ 12" Infra-Q™ + 24" Power-Wok™ range-top

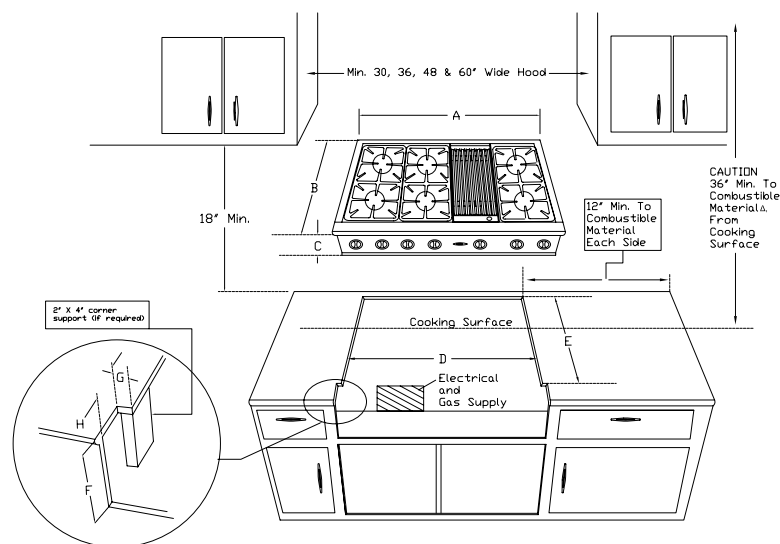


GRT604GW – 60" 4 burner w/ 12" Thermo-Griddle™ + 24" Power-Wok™ range-top

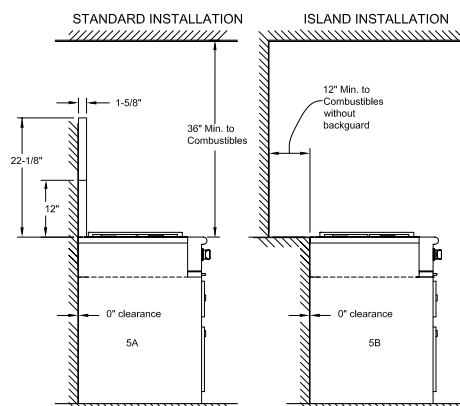
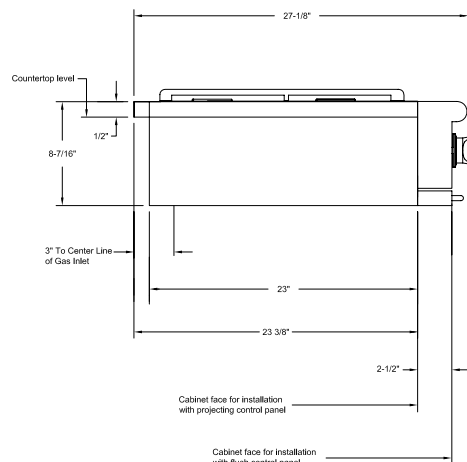


GRT604QG – 60" 4 burner w/ 12" Infra-Q™ + 24" Thermo-Griddle™ range-top

CABINET PREPARATION



MODELS	A	B	C	D	E	F	G	H
GRT30 Models	29 7/8	27 1/8	8 1/4	26 15/16	23 1/8	7 1/2	1/2	2-1/2
GRT36 Models	35 7/8	27 1/8	8 1/4	35 15/16	23 1/8	7 1/2	1/2	2-1/2
GRT48 Models	47 7/8	27 1/8	8 1/4	46 15/16	23 1/8	7 1/2	1/2	2-1/2
GRT60 Models	59 7/8	27 1/8	8 1/4	58 15/16	23 1/8	7 1/2	1/2	2-1/2



Capital Cooking Equipment Inc.
13211 Florence Ave.
Santa Fe Springs, CA 90670

Phone: 562-903-1168
Toll Free: 866-402-4600
email: customerservice@capital-cooking.com

Made in the U.S.A.
Visit our web site: www.capital-cooking.com
© 2006 Capital Cooking Equipment, Inc.