

ASSEMBLY INSTRUCTION FOR


FIREPLACE WITH SOUND SYSTEM


LA-14250-8-FP

Caution: Please read instructions thoroughly before unpacking assembly parts. Sharp, exposed staple tips can cause injury, therefore, for your protection, please remove any exposed staples used in packing.





1. We recommend that you should assemble this product with the assistance of another person; this will make assembly easier, and will help to eliminate damage to the product or injury to persons during assembly.
2. Be sure to check all packing materials carefully for small parts that may have come loose inside the carton during shipment.
3. Please do not over tighten screws or bolts.
4. Please put all parts on a non-abrasive floor before assembly, and follow the assembly steps to assemble your newly purchased product correctly and efficiently.

PART LIST

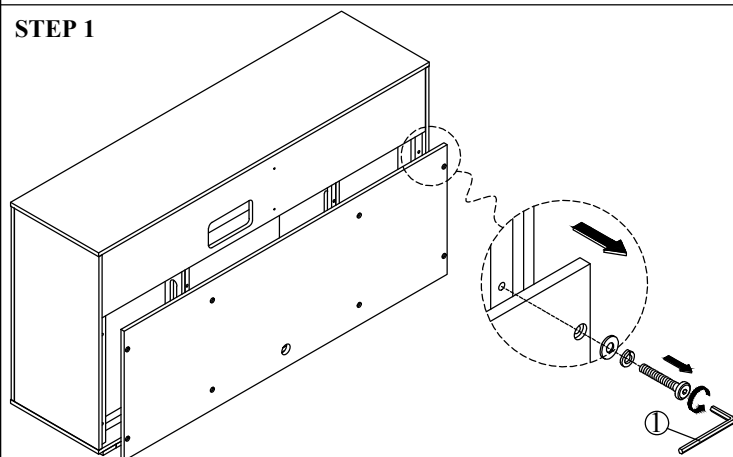
	Part Description		Code.	Q'ty
A		Fireplace With Sound System	LA-14250-8-FP	1

 Only tighten all bolts when all bolts aligned with bolt inserts.

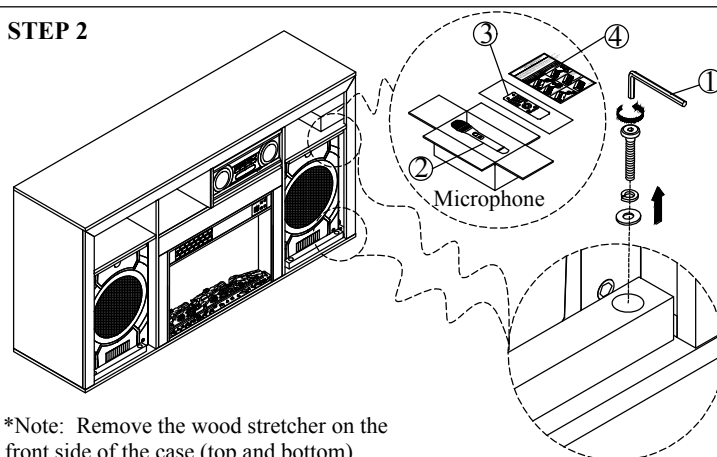
HARDWARE LIST

No.	Hardware Description	Code.	Q'ty
1	 Allen key M4*2-5/16"		1
2	 Sound System Mic		1
3	 Sound System Remote Control		1
4	 User instruction for Sound System		1

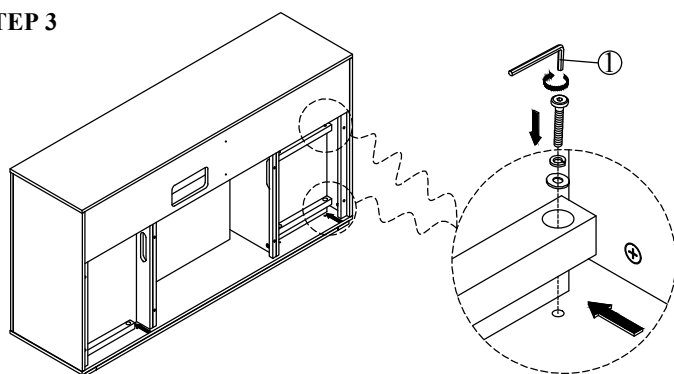
STEP 1



STEP 2

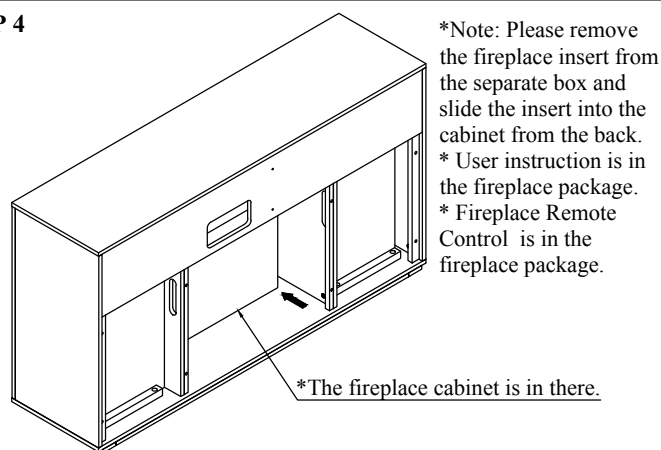


STEP 3

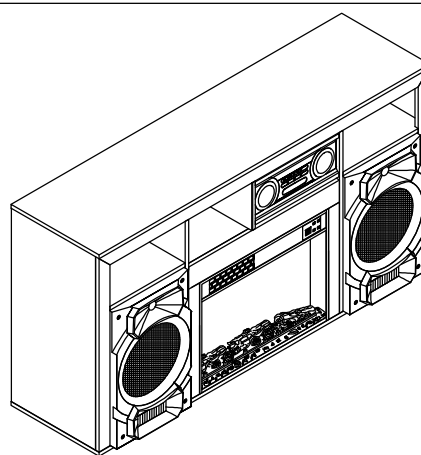
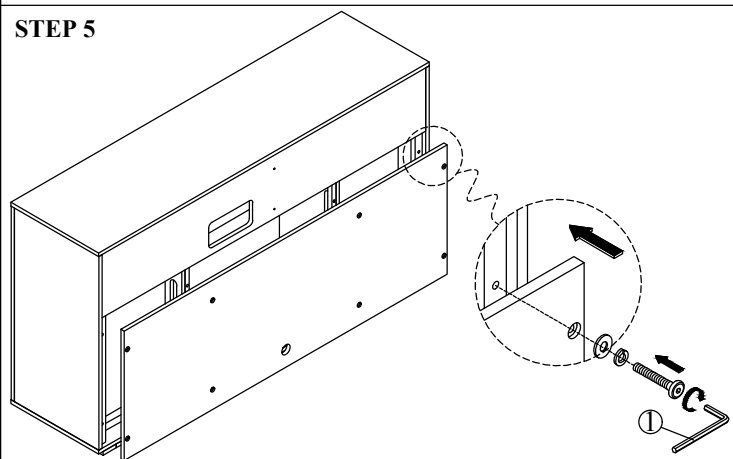


*Note: Slightly move the speaker forward and install the wood stretcher on the back side of the case (top and bottom).

STEP 4



STEP 5



COMPLETED