

24" Vented Electric Dryer

VD24001W



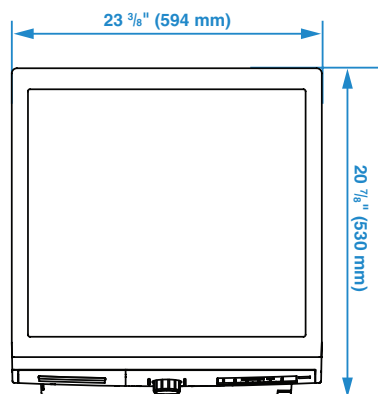
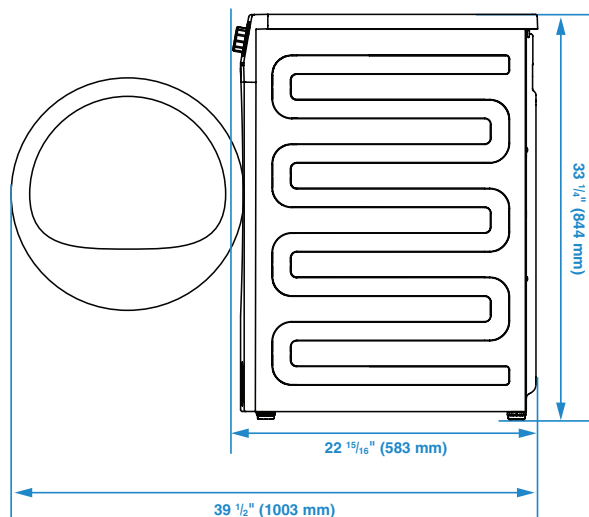
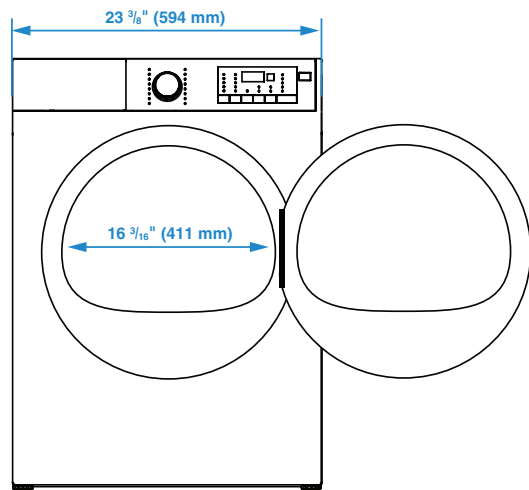
KEY FEATURES

- Compact Dryer
- Child Lock
- Stack Kit Included
- Bi-directional Drum Action
- Lifetime Stainless Steel Drum

GENERAL	
Dryer Type	Electric Air-vented
Capacity cu. ft.	3.7
Dry load capacity kg	7.0
Dry load capacity lbs.	15.5 lbs.
Drum material	Stainless steel
Control	LED Display
Silence level dBA	66 dBA
FUNCTIONS	
End of cycle buzzer	Yes
Child Lock	Yes
Auto anti-creasing	Yes
Glass door with heat protection	Yes
Program follower	Yes
Leveling Legs	2
Clean filter indicator	Yes
Bi-directional drum action	Yes
Low heat	Yes
Auto cool-down phase	Yes
CYCLES	
Number of cycles	15
Cottons / Normal	Yes
Perm Press	Yes
Mixed fabrics	Yes
Delicates	Yes
Sanitize	Yes
Jeans	Yes
ACCESSORY	
Stacking Kit	Included 2961460038
FINISHES	
Cabinet	White
Door Rim	White
Cycle Selector Knob	Silver
TECHNICAL FEATURES	
Voltage / Frequency	208–240 V / 60 Hz
Rated Current Amps	10 A
Watts (W)	2000
ENVIRONMENTAL STANDARDS	
Energy consumption kWh/year	379
DIMENSIONS	
Product Dimensions (H x W x D) in	33 ¹ / ₄ x 23 ³ / ₈ x 20 ⁷ / ₈ in.
Product Dimensions (H x W x D) cm	84.4 x 59.3 x 53cm
Product Weight kg	35.5 kg
Product Weight lbs.	79 lbs.

24" Vented Electric Dryer

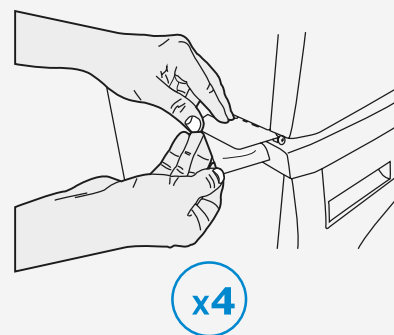
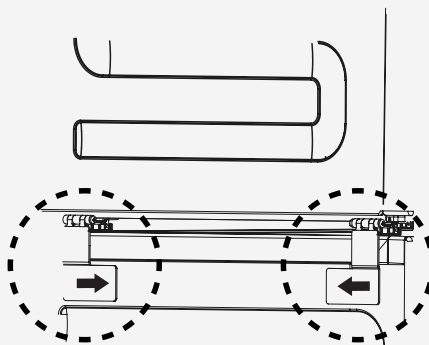
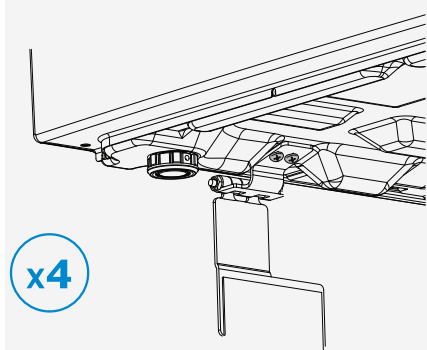
VD24001W



Required Minimum Air Gap Clearance:

6 1/4" (159 mm) Top
1/2" (13 mm) Sides
4" (102 mm) Back

Stacking Kit Details



NOTE TO THE INSTALLER: All height, width, and depth dimensions are shown in inches (as well as metric). Beko U.S., Inc. reserves the absolute and unrestricted right to change product materials and specifications, at any time, without notice. Please visit our website, www.BekoAppliances.com, or call 888.352.2356 to verify the latest specifications with final dimensional data and other details prior to installation and making a cutout. Applicable product limited warranty information may be found in accompanying product materials, or you may contact your account manager for further details. Proper installation is the responsibility of the installer. Product failure due to improper installation is not covered under the Limited Warranty.

888.352.BEKO(2356) | BekoAppliances.com

YOUR NEXT LEVEL OF REMARKABLE

beko