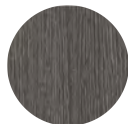


# CUBO Chair w/o Arm

# RATANA



Weave: Resin  
Finish: Creamy Oak



Frame: Aluminum  
Finish: Pearl Grey

## FN61253COK-C



Seat Height\*: 18" w/cushion

Overall Height: 25.5"



Depth: 39.5"

Weight: 45 LBS



Width: 25"



## TECHNICAL INFORMATION

- Weave: Resin – Creamy Oak COK round 7mm  
Aluminum – Pearl Grey PGR
- Frame: Aluminum
- Modular design of sectional provides flexibility and style
- Chairs with wood grain finished aluminum legs
- Chair with slanted back and seat panel dropping inwards to offer great comfort
- Interlocking system to secure sectional pieces
- Max. weight load: 350 LBS per seat
- Contract quality
- For outdoor use only

**www.ratana.com**

Toll Free Phone: 866.919.1881  
Toll Free Fax: 888.880.8209  
Email: [sales@ratana.com](mailto:sales@ratana.com)  
Website: [www.ratana.com](http://www.ratana.com)