



#### AR 410 710

Metal housing  
Max. air output 400 CFM  
Air recirculation

#### Installation accessories

##### AA 410 110

2 activated charcoal filter  
For air recirculation.

##### AA 410 112

2 regenerable activated charcoal filter  
For air recirculation.

##### AD 704 040

Pipe adapter, DN 200/150, metal

##### AD 858 010

Flat duct flex pipe, DN 150, metal

##### AD 854 010

Flat duct, DN 150, metal

##### AD 854 030

Flat duct bend, 90° vertical, DN 150, metal

##### AD 854 031

Flat duct bend, 90° horizontal, DN 150, metal

##### AD 854 040

Flat duct connecting piece, male, DN 150, metal

##### AD 854 000

Flat duct connecting piece, female, DN 150, metal

##### AD 854 041

Flat duct adapter round, DN 150, metal

##### AD 854 032

Flat duct adapter round, 90 ° vertical, DN 150, metal

##### AD 990 091

Aluminum tape

#### 400 series recirculation blower

##### AR 410

- Powerful recirculation blower to combine with 200 series Vario downdraft and 400 series retractable downdraft ventilation
- Efficient BLDC technology
- Particularly quiet due to patented noise insulation
- Compact, space-saving installation

#### Output

Performance output level 3/Intensive.  
Sound power and sound pressure depending on built-in situation.  
Air recirculation: 400 CFM.

#### Features

3 electronically controlled power levels and 1 intensive mode.

Fan technology with highly efficient, brushless DC motor (BLDC).

Including sound insulation to minimize the noise level.

Steel housing, zinc-plated.

Pipe connection piece on intake side:

1 x DN 150 flat duct.

Retaining bracket for installation at the furniture base enclosed.

2 regenerable activated charcoal filters enclosed.

Extended change interval of the activated charcoal filter: regenerable up to 30 times.

Regenerable in the oven at 400 F.

#### Planning notes

Powerful recirculation blower to combine with VL200 Vario downdraft ventilation.

Connection to VL200 downdraft via network cable.

Installation in a lower cabinet possible with a cut-out in the furniture base or behind the cabinet positioned on the floor. To replace the filter the blower must be accessible.

The filter exchange is possible from both sides of the blower.

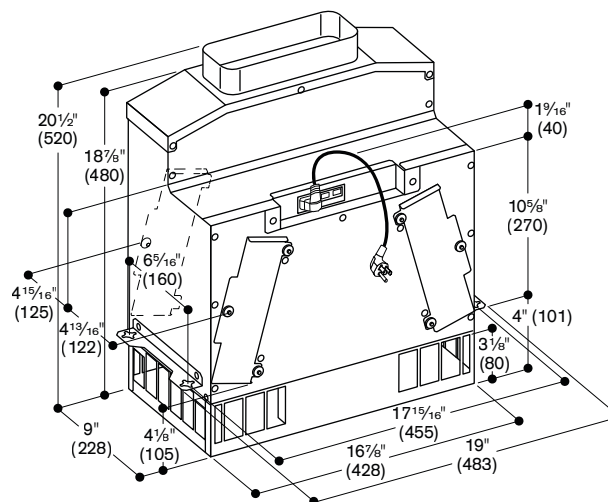
#### Connection

Total rating: 170 W.

Total Amps: 10 A.

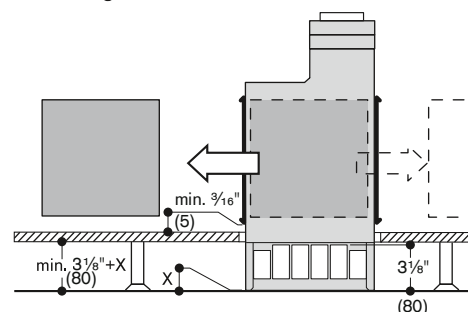
Connecting cable 68 7/8" with plug.

78" network cable included.



Measurements in inches (mm)

#### Filter exchange



Numbers indicated  
inside parenthesis ( ) = mm