

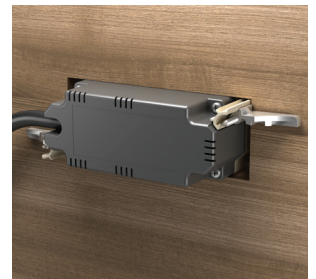
POWER WHERE YOU NEED IT

Power up and recharge devices from nearly any piece of furniture with Chief's radiant® Furniture Power Centers. The sleek design and tamper-resistant receptacles are quick and easy to install to training room tables, conference room tables, hospitality furniture and more.



FEATURES

- Fast & easy install – simply cut an opening, insert, tighten clamps, snap on bezel and plug in
- A compact, low profile design mounts quickly into many surfaces using screw clamps instead of wood screws
- Safe for spills and ready to mount in horizontal surfaces like tabletops
- Two tamper-resistant AC power receptacles to protect yourself and your devices from damage or risk of injury
- Pass-thru plug allows you to plug another device, such as a lamp, into the back of the power unit plug, ensuring you don't lose an outlet
- Complies with part 15 of FCC Rules; ETL Listed to both US and Canadian safety standards
- cETLus Listed to UL 962A – Standard for Furniture Power Distribution Units, and CSA C22.2 No. 21 – Standard for Cord Sets and Power Supply Cords
- Flush mounts to 0.125" (3 mm) deep bezel height
- RoHS compliant
- Quick Ship item



SPECIFICATIONS

- Finish Options: KRARPC22W (White) or KRARPC22N (Nickel)
- Overall Dimensions: (H x W x D) 2.5 x 7.125 x 2" (64 x 181 x 51 mm)
- Power Note: Electrical Outlets rated 15A, 125Vac; USB 5Vdc, 3.1A Shared
- Mounting: Mounts in vertical or horizontal position into any material up to 3/4" (19mm) thick



KRARPC22N



KRARPC22W

